



Meridian Commerce Park

4911 W. GRAND MOGUL DR. | MERIDIAN, ID.

**RARE NEW CLASS A INDUSTRIAL
BUILDING IN MERIDIAN**
Building Shell Completed!

BUILDING J
±101,608 SF
divisible to ±20,280 SF

HARRY SAWYER, MSRE
Vice President
+1 208 830 5272
harrison.sawyer@cbre.com

JAKE MILLER, SIOR
Senior Vice President
+1 208 589 2950
jake.miller@cbre.com

SCOTT KETLINSKI
Associate
+1 208 608 6300
scott.ketlinski@cbre.com

@ industrial


SAWTOOTH
DEVELOPMENT GROUP

CBRE

PROJECT OVERVIEW



10-15
buildings
on 120 acres



Over 2,000,000
square feet total



Located in Meridian, Idaho
(Boise MSA) at I-84 and Black
Cat Road with easy access to
the entire Boise metro area

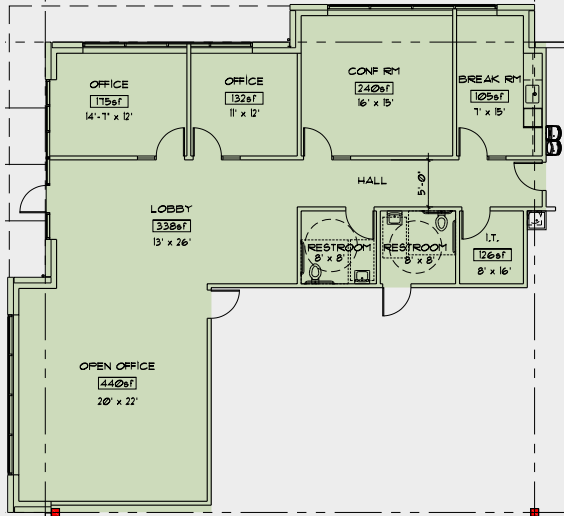


Highway Access:

- Near the new Highway 16/I-84 interchange (¾ mile west).
- Provides access to I-84 and US-20/26.
- Highway 16 improvements will connect to Eagle, Star, and Middleton.



±1,982 SF Spec Office



Rare Class A
Industrial in
Meridian



±101,608 SF
Available;
Divisible to ±20,280 SF



32'
Clear Height



Column Spacing
Truck Court
Depth



195'
Building Depth



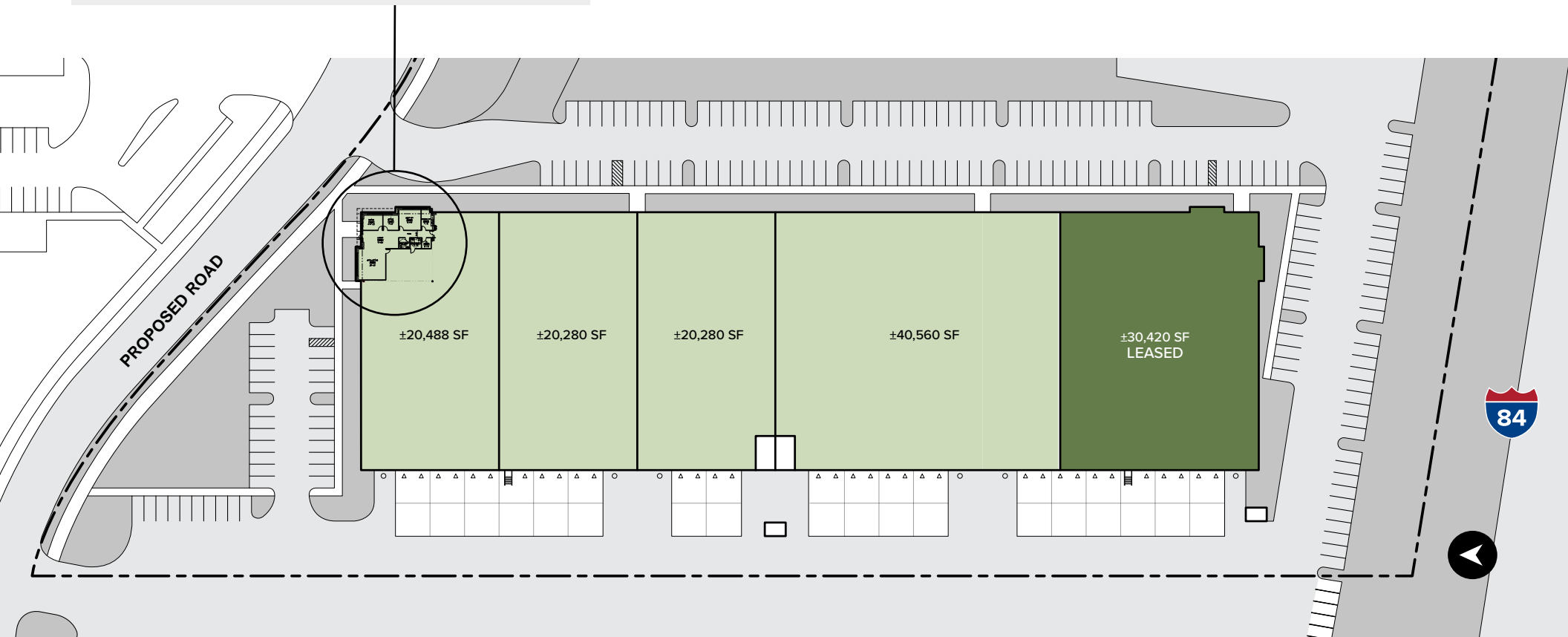
±34
Dock Doors



Grade-Level
Doors Available



480v/277 3-Phase
Power



LOCATION HIGHLIGHTS



PROPERTY IMAGES





Meridian Commerce Park



HARRY SAWYER, MSRE
Vice President
+1 208 830 5272
harrison.sawyer@cbre.com

JAKE MILLER, SIOR
Senior Vice President
+1 208 589 2950
jake.miller@cbre.com

SCOTT KETLINSKI
Associate
+1 208 608 6300
scott.ketlinski@cbre.com



© 2025 CBRE, Inc. All rights reserved. This information has been obtained from sources believed reliable, but has not been verified for accuracy or completeness. You should conduct a careful, independent investigation of the property and verify all information. Any reliance on this information is solely at your own risk. CBRE and the CBRE logo are service marks of CBRE, Inc. All other marks displayed on this document are the property of their respective owners, and the use of such logos does not imply any affiliation with or endorsement of CBRE. Photos herein are the property of their respective owners. Use of these images without the express written consent of the owner is prohibited. PMStudio_July2025