

# INTERNATIONAL — TOWER —

135,844 SF FOR LEASE

8550 BRYN MAWR AVE | CHICAGO, IL

Jones Lang LaSalle Americas, Inc. License #: CO508577000





# PROPERTY OVERVIEW

🏠 **310,145 SF RBA**

📊 **135,844 AVAILABLE SF**

P **UNDERGROUND PARKING**

📏 **FLOOR TO CEILING GLASS**

👁️ **AMAZING CITY VIEWS**

## AMENITIES

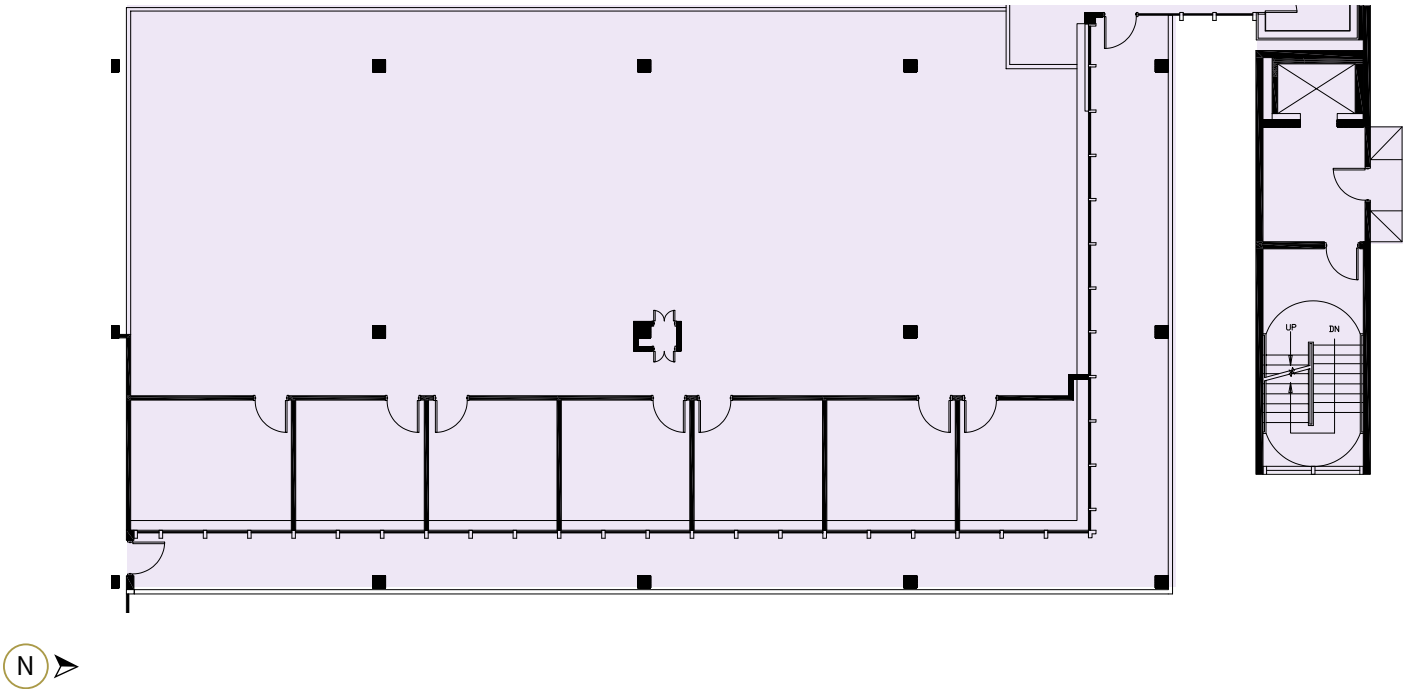
- The hub of the O'Hare market is available with space between 5,000 SF to 27,484 SF
- New Fitness Center with yoga room, conference center, and tenant lounge
- Food service and adjacent full service hotel
- Executive underground parking and multi-level parking deck
- Latest fiber-optic technology
- 24/7 manned security and key card access
- Located at the four way Interchange of Cumberland Avenue and the Kennedy Expressway
- Five minute walk to the CTA Blue Line
- 10 minutes from O'Hare Airport



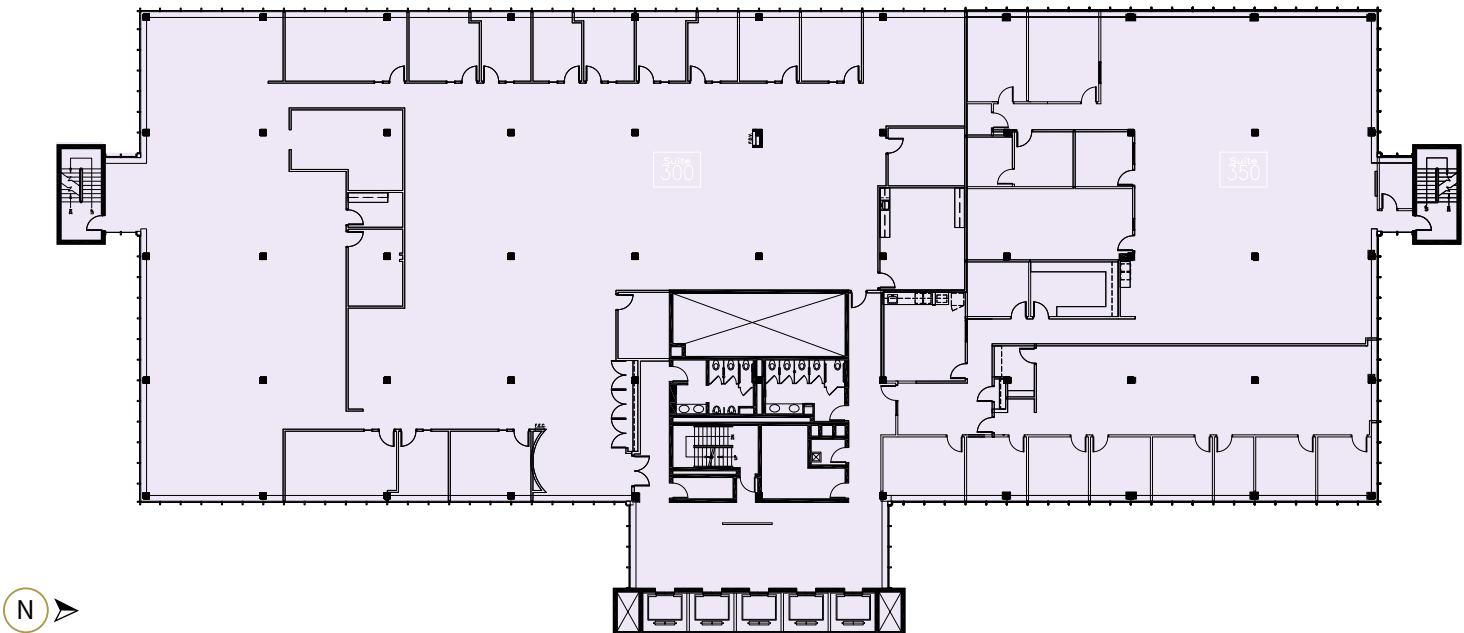




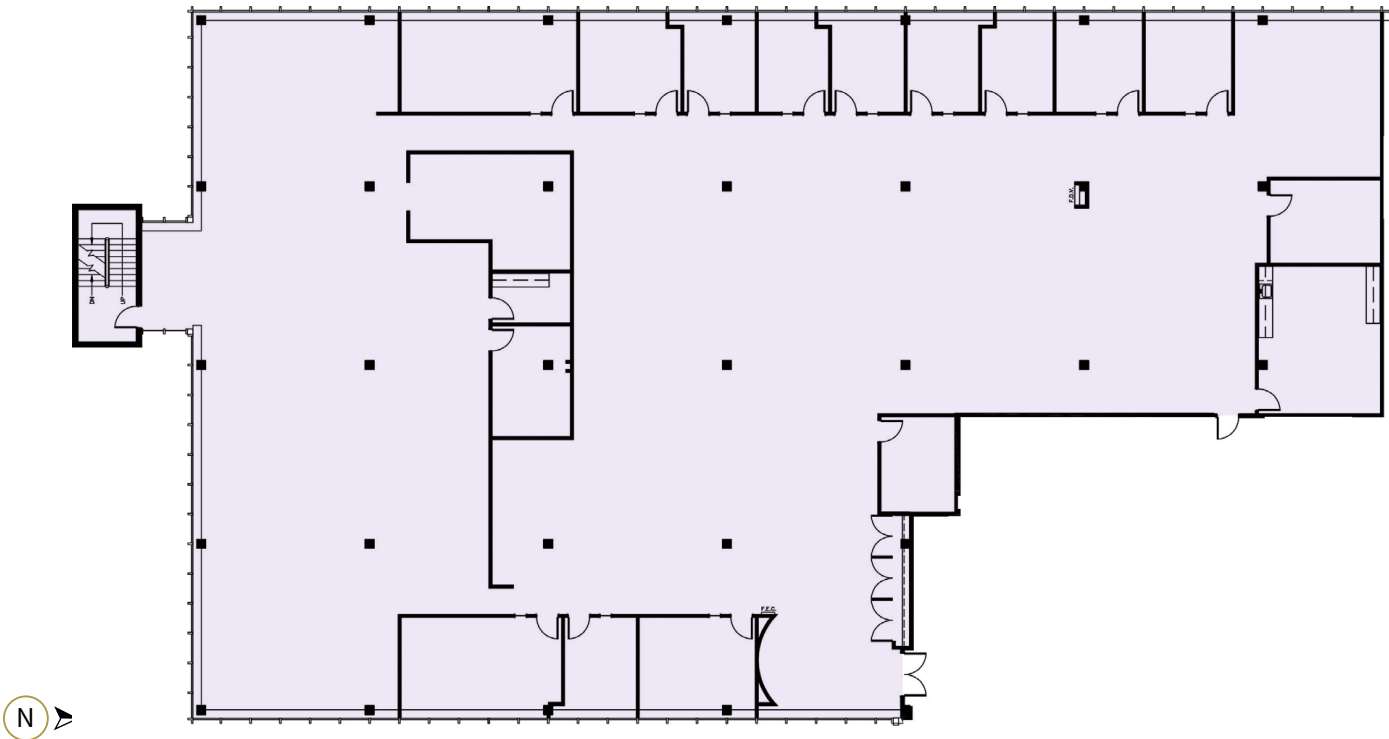
SUITE 250 **5,518 SF**



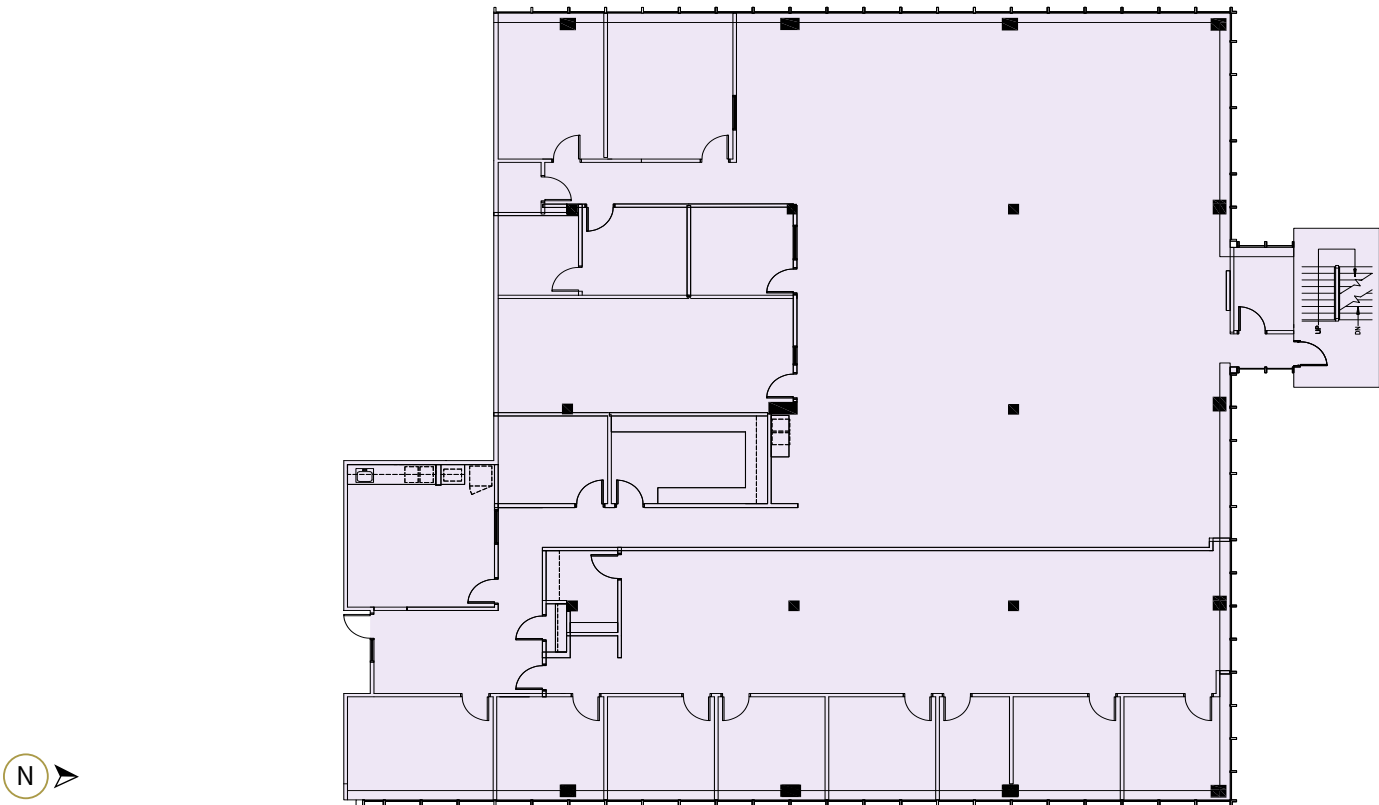
SUITE 300 - FULL FLOOR **27,484 SF**



SUITE 300 **16,406 SF**

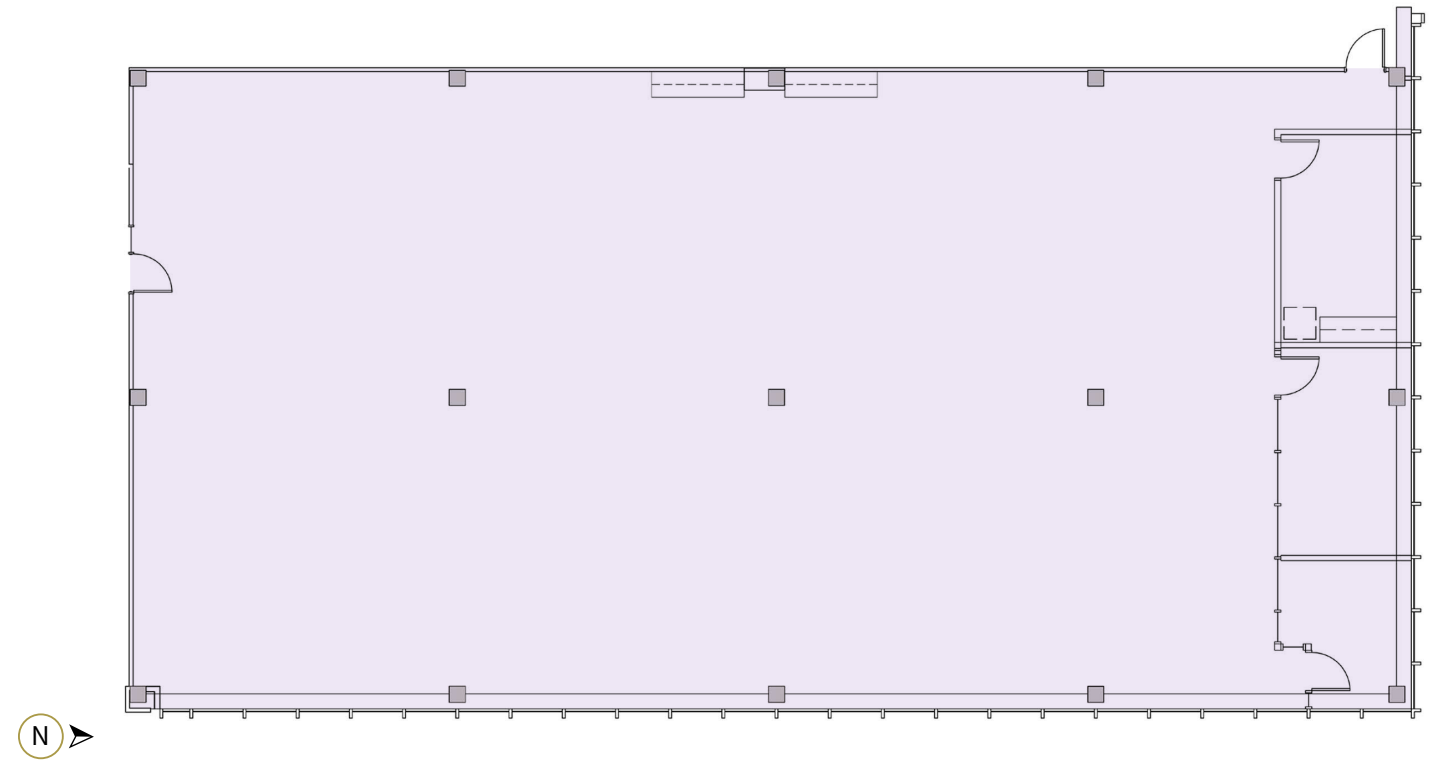


SUITE 350 **11,078 SF**

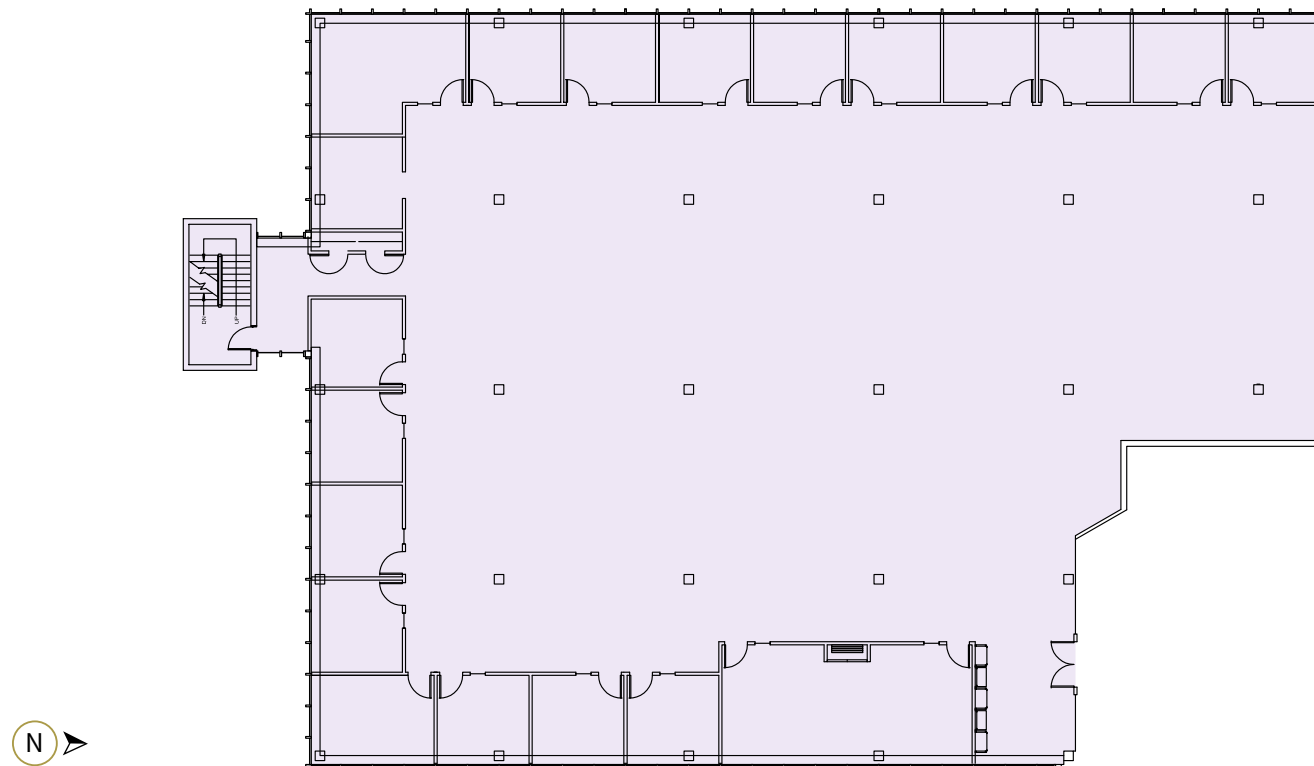




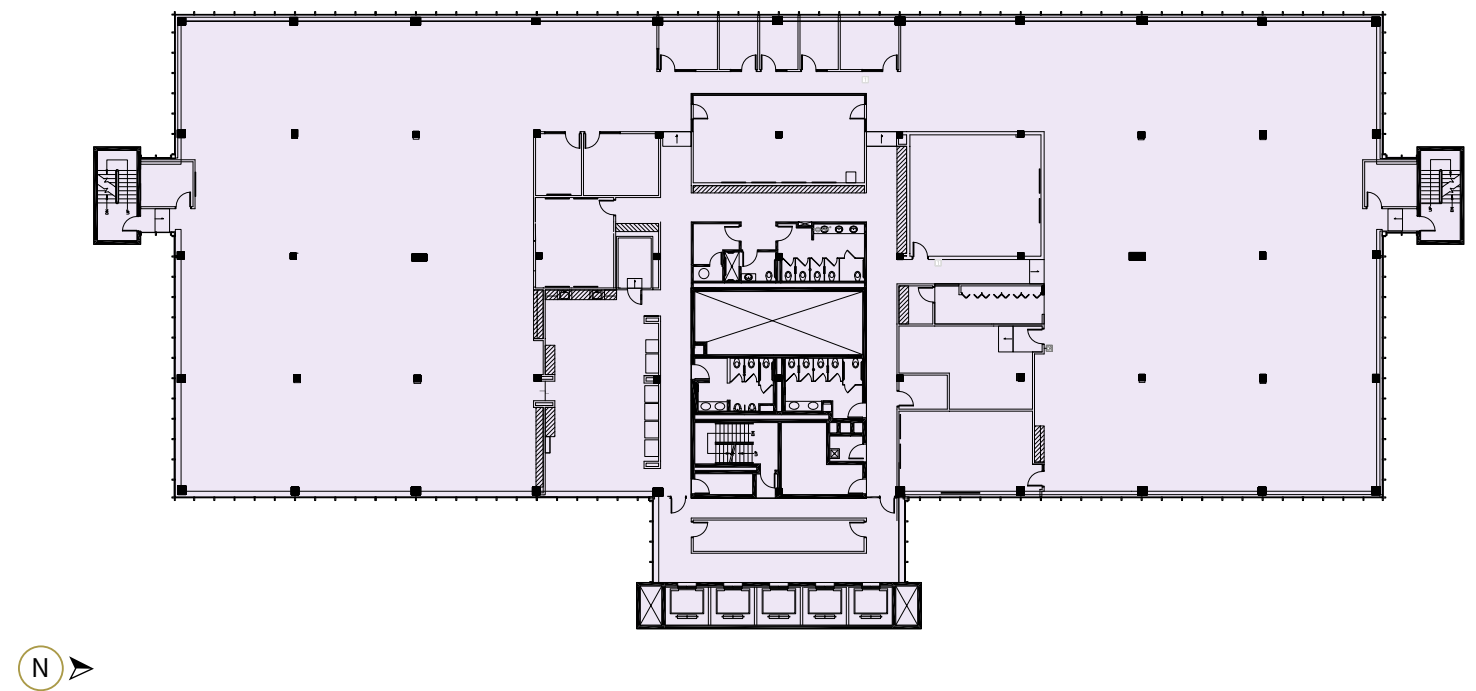
## SUITE 575 6,040 SF



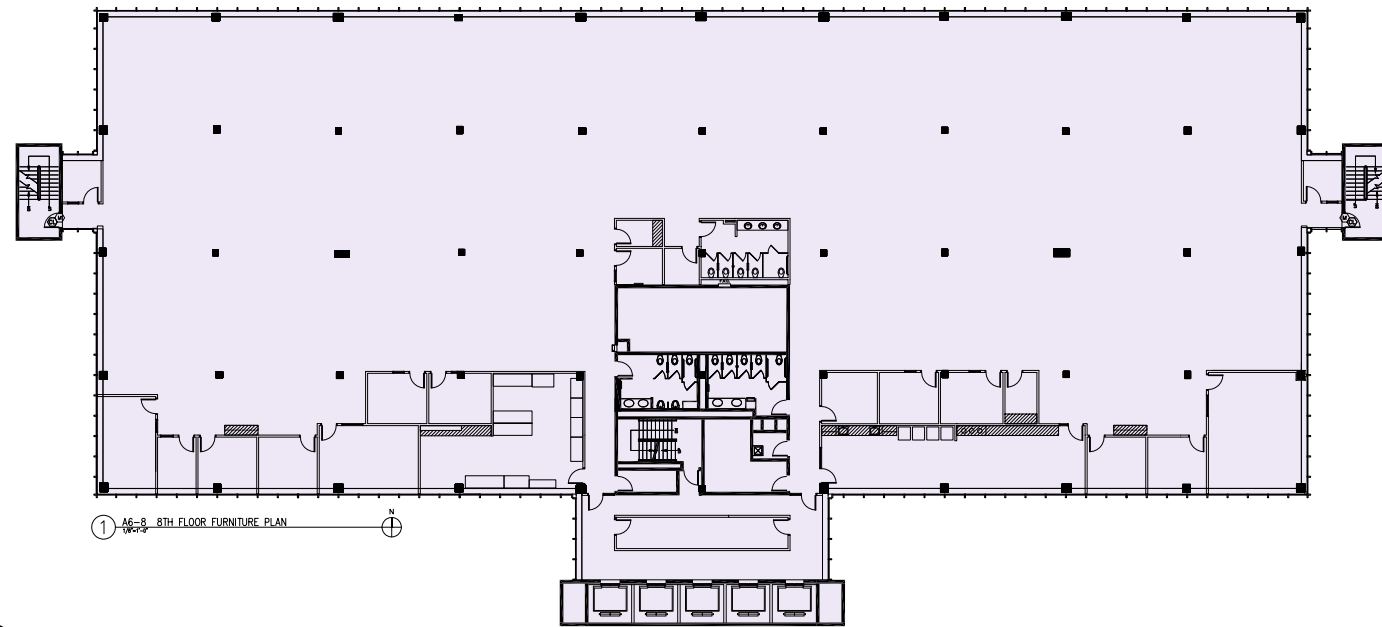
## SUITE 500 14,350 SF



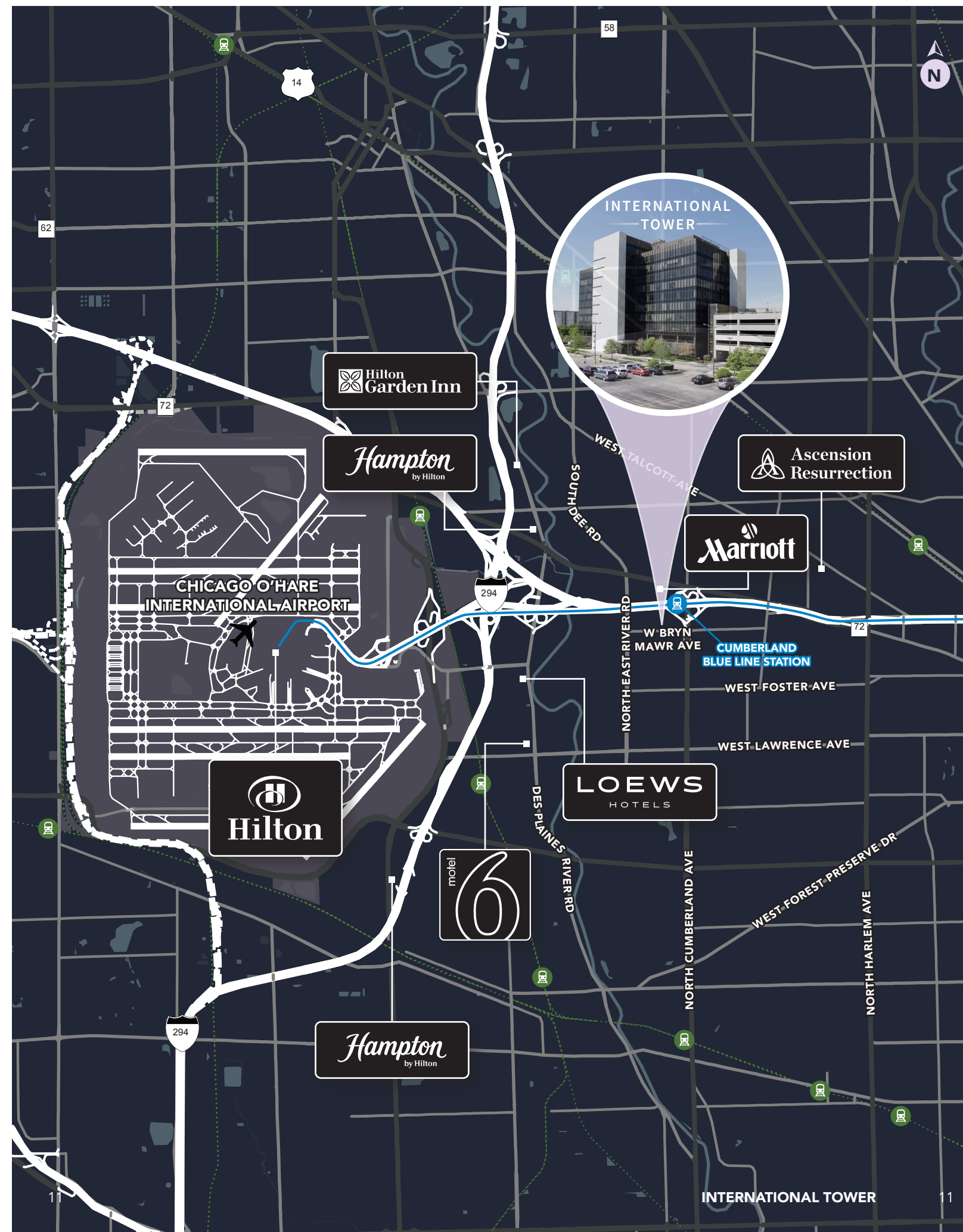
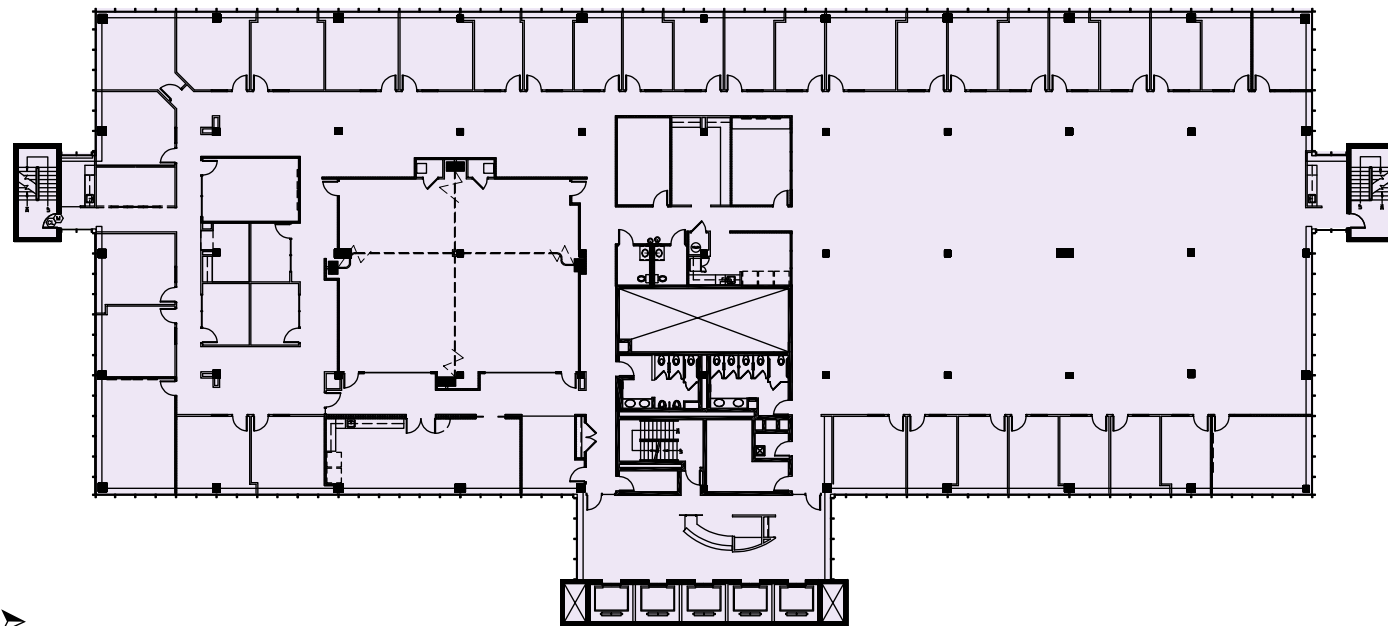
## SUITE 700 27,484 SF





SUITE 800 **27,484 SF**

SUITE 1000 **27,484 SF**







# INTERNATIONAL —TOWER—

## CONTACT:

**Dan Svachula**  
Executive Vice President  
+1 773 632 2510  
dan.svachula@jll.com

**Allyson Birchmeier**  
Senior Associate  
+1 773 632 2511  
allyson.birchmeier@jll.com

**Chris Cummins**  
Managing Director  
+1 773 458 1352  
chris.cummins@jll.com

Although information has been obtained from sources deemed reliable, neither Owner nor JLL makes any guarantees, warranties or representations, express or implied, as to the completeness or accuracy as to the information contained herein. Any projections, opinions, assumptions or estimates used are for example only. There may be differences between projected and actual results, and those differences may be material. The Property may be withdrawn without notice. Neither Owner nor JLL accepts any liability for any loss or damage suffered by any party resulting from reliance on this information. If the recipient of this information has signed a confidentiality agreement regarding this matter, this information is subject to the terms of that agreement. ©2025 Jones Lang LaSalle IP, Inc. All rights reserved.