

# 605 N. Main Street

Summerville, SC 29483



**APPROXIMATELY 0.5 AC  
OUTPARCEL FOR GROUND  
LEASE OR BUILD-TO-SUIT**

**Dexter Rumsey**

Broker - Partner | NAI Charleston  
843.452.9417 | 843.720.4944  
drumsey@naicharleston.com

**NAI**Charleston



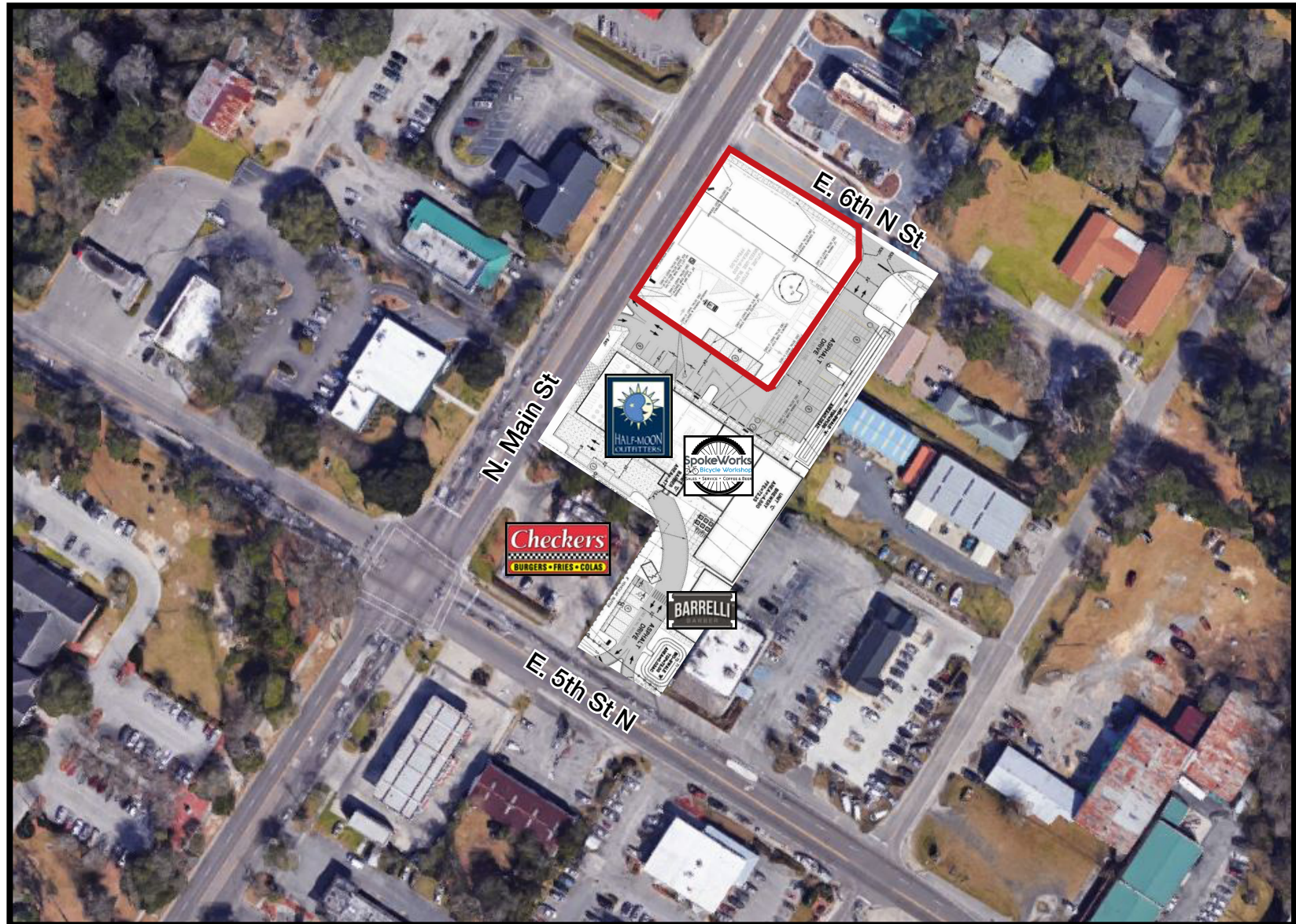


### PROPERTY HIGHLIGHTS:

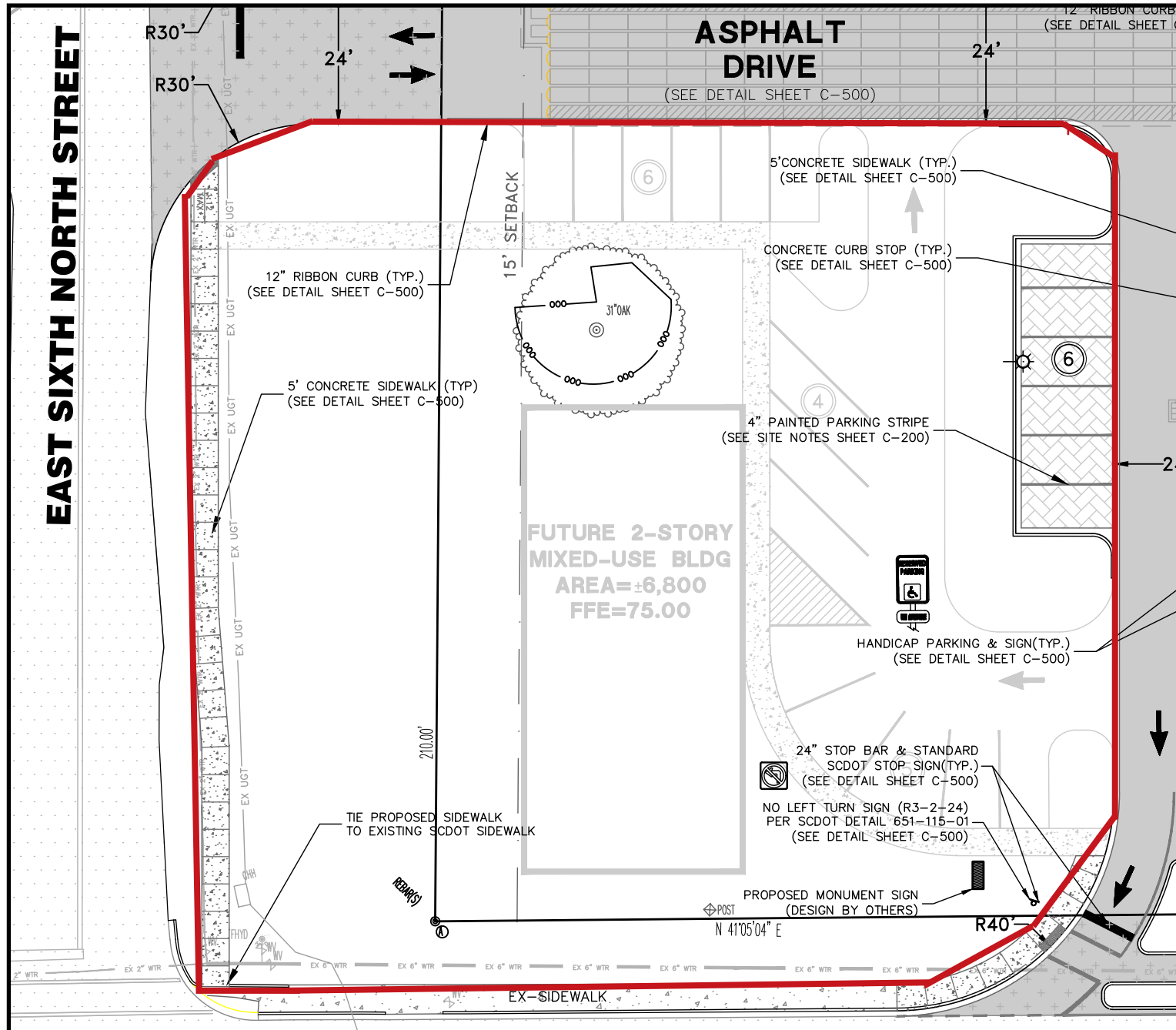
- Retail pad/office corner outparcel in the Half-Moon Outfitters anchored center
- Approximately 0.5 AC available for ground lease or build-to-suit
- Prime location in the rapidly growing town of Summerville with easy access to I-26
- Ideal opportunity for a cafe, coffee shop, bank or other retail/office space
- Surrounded by numerous popular retailers and restaurants
- 37,600 VPD on N. Main St. (SCDOT) & shared parking onsite
- Zoning: Commercial, Dorchester County
- Price: Ground Lease at \$80k/year, NNN or negotiable build-to-suit for credit tenant



# AERIAL

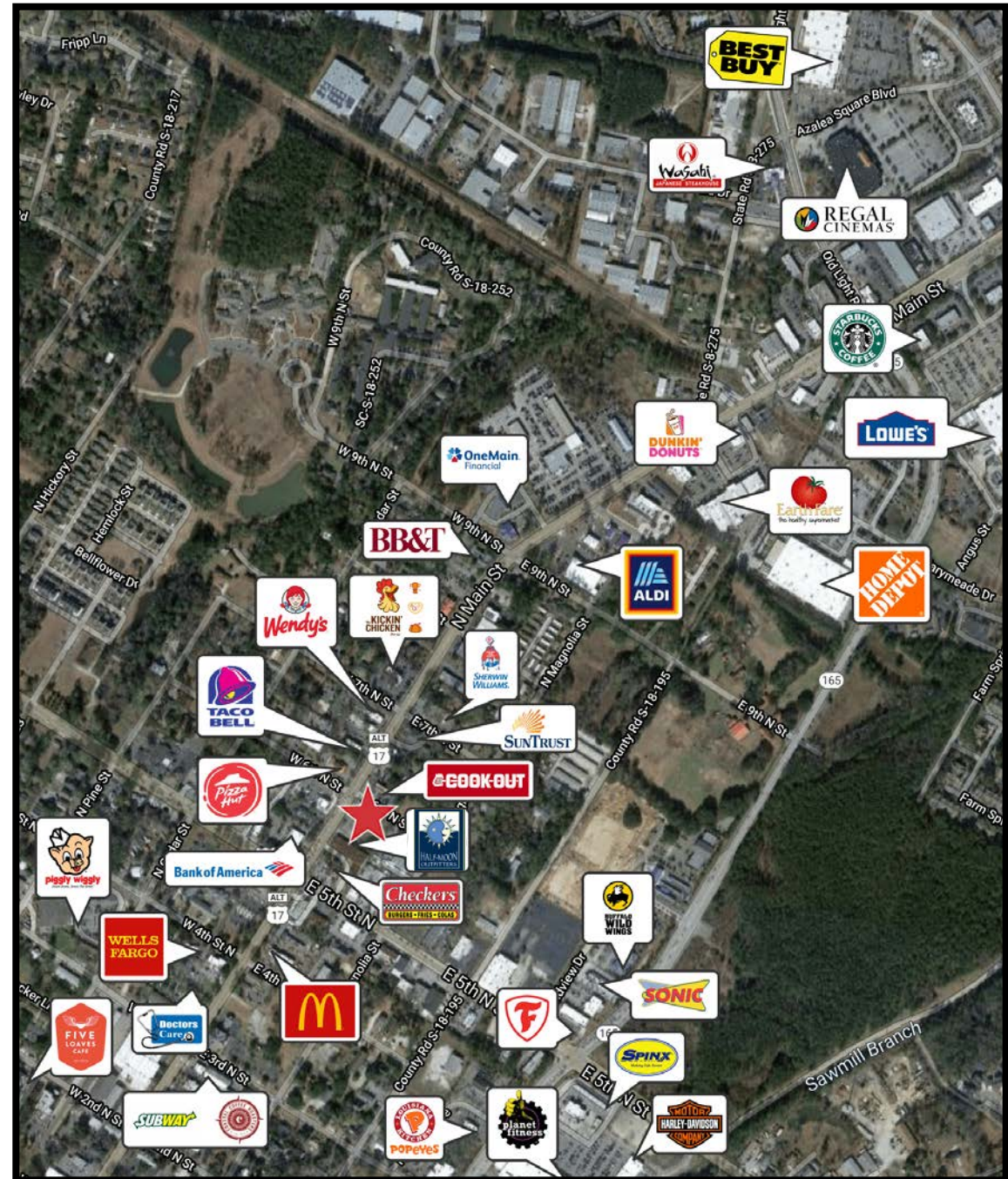
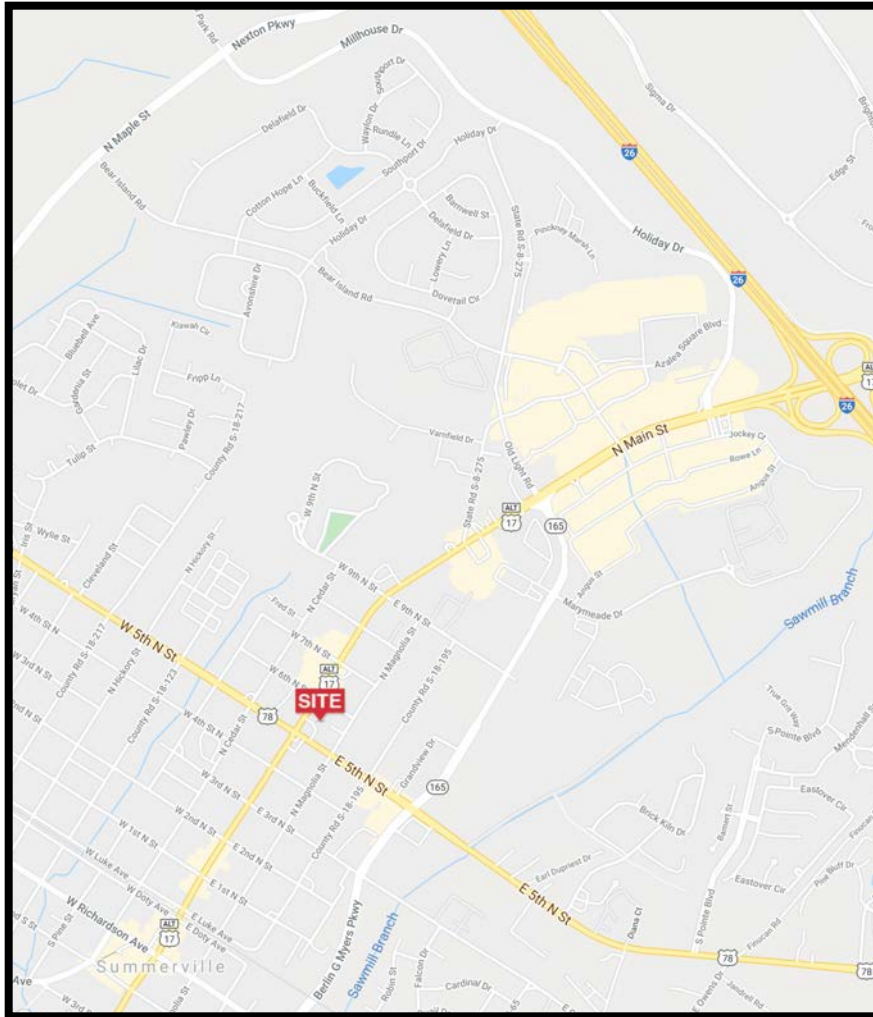


# SITE PLAN





# AREA MAPS





# Contact Us

**Dexter Rumsey, IV**  
Broker | NAI Charleston  
843.452.9417 | 843.720.4944  
[drumsey@naicharleston.com](mailto:drumsey@naicharleston.com)

*DISCLAIMER: The information contained herein has been given to us by the owner of the property or other sources we deem reliable. We have no reason to doubt its accuracy, but we do not guarantee it. All information should be verified prior to purchase or lease.*