

0 Slaton St New Smyrna Beach, FL 32168

(2) Multifamily / Residential Development Lots

Asking Price \$399,000



PROPERTY FEATURES

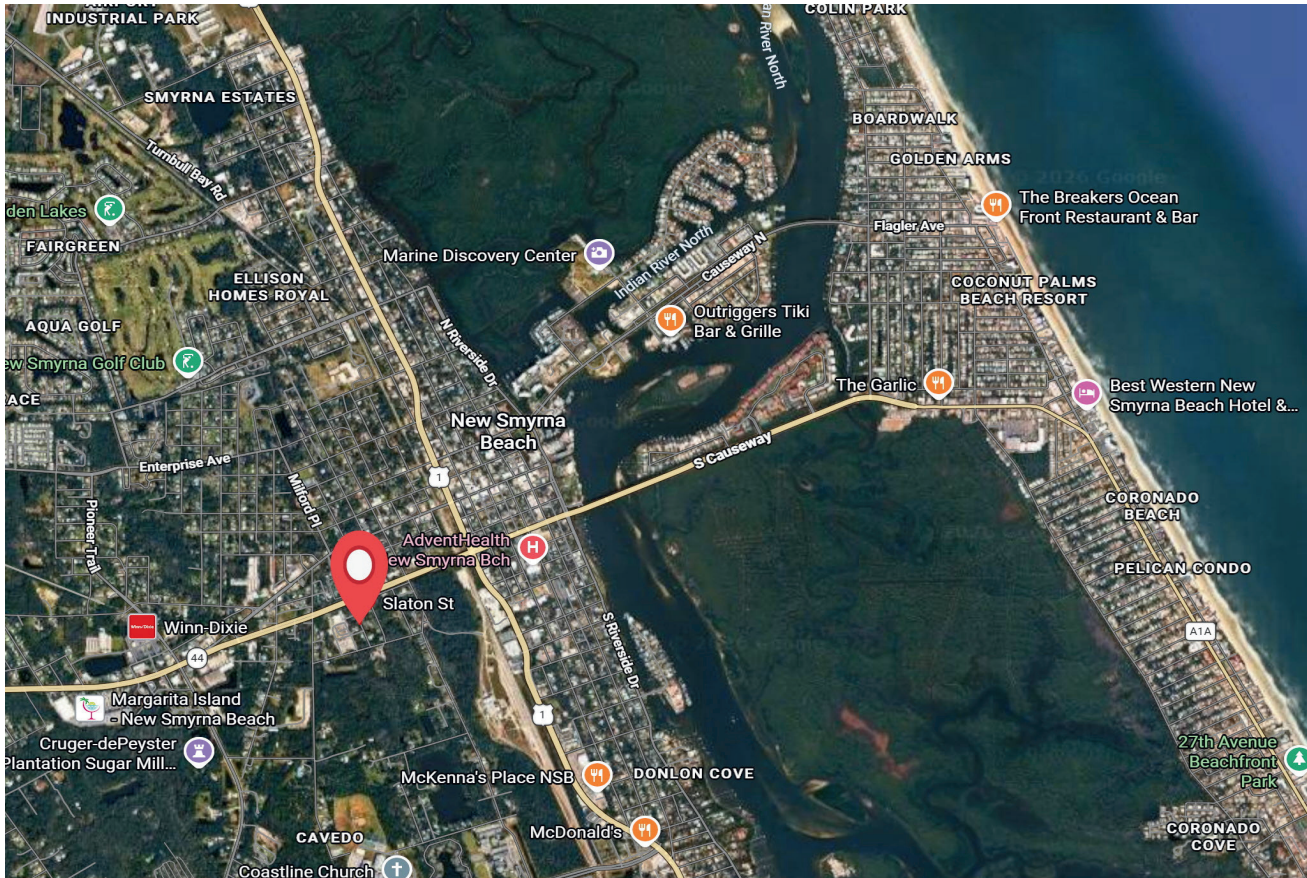
- (2) Multifamily / Residential Development Lots
- Proposed Use: +/- 6 Townhome Lot Development
- Dimensions: ~140' x ~113' (Combined)
- Zoning: R-5 (Multifamily) - City of New Smyrna Beach
- ~1/2 Mile from Famous Canal St Historic District off SR 44
- Incredible infill Townhome Development Opportunity in the Heart of New Smyrna Beach

CHRIS PIXLEY

Engel & Volkers New Smyrna Beach
352.267.4244
christopher.pixley@gmail.com

STEVE FUSILIER

Engel & Volkers New Smyrna Beach
407.448.2733
steve.fusilier@evrealestate.com



CHRIS PIXLEY

STEVE FUSILIER

Engel & Volkers New Smyrna Beach
 352.267.4244
chris.pixley@evrealestate.com

Engel & Volkers New Smyrna Beach
 407.448.2733
steve.fusilier@evrealestate.com