



# Office Space for Lease

**910 SE 7TH ST TERRACE  
LEE'S SUMMIT, MISSOURI**

## Property Highlights

- 3,460 (±) sf available
- Two story office building
- Located in the Chapman Industrial Park
- Minutes from Downtown Lee's Summit which provides a wide variety of unique shops, restaurants and local businesses
- Located near the interchange of 291 Highway and 50 Highway
- Potential for outdoor storage behind the property
- Lease rate \$16.00/sf, net janitorial

*For information, please contact:*

**Michael L. VanBuskirk, SIOR, CCIM, CRE**  
*Executive Managing Director, Principal*  
t 816-512-1010  
mvanbuskirk@nzimmer.com

**Philip J. Botana**  
*Associate*  
t 816-512-1008  
pbotana@nzimmer.com

1220 Washington Street, Suite 300  
Kansas City, MO 64105

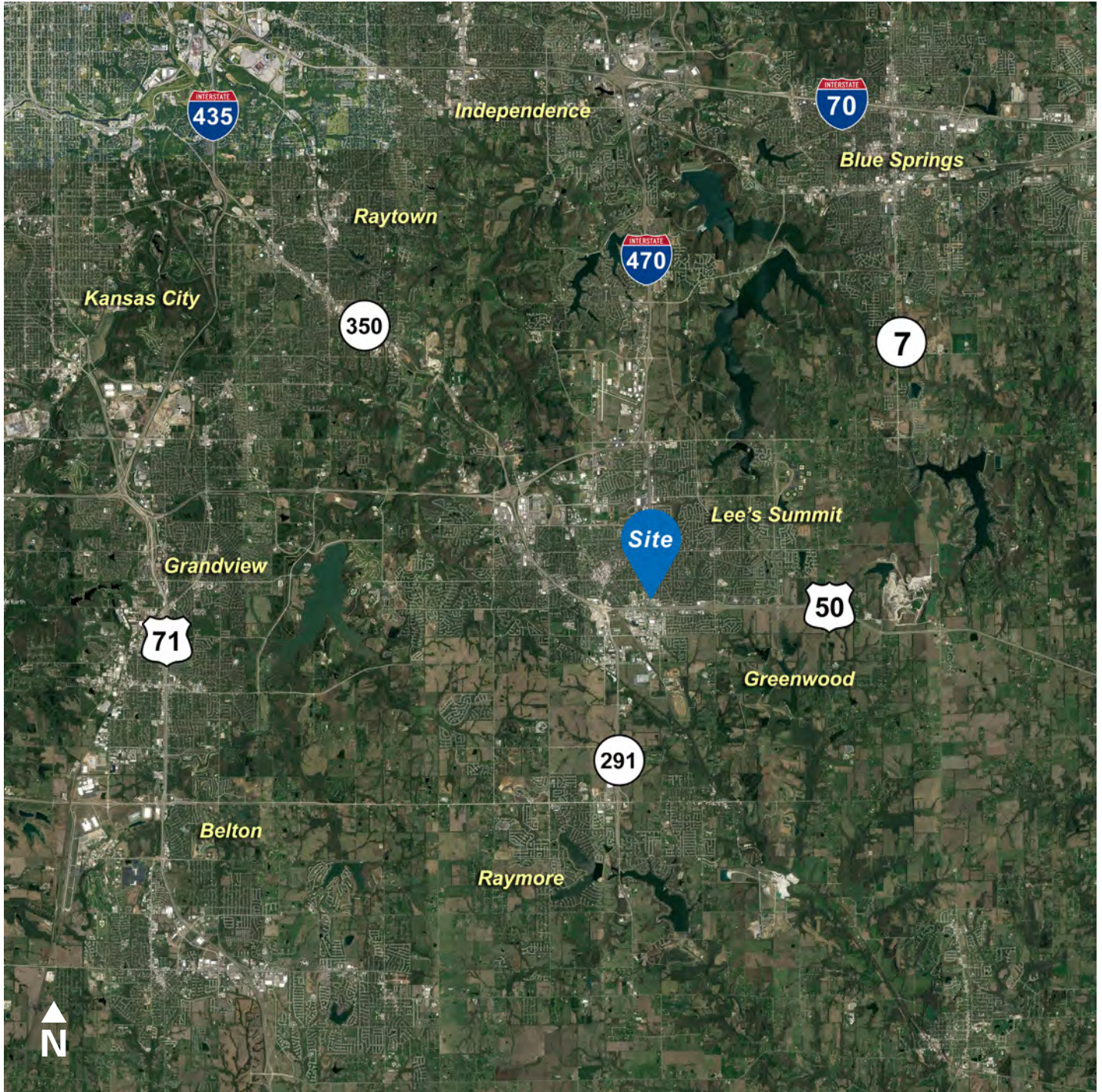
[nrmkzimmer.com](http://nrmkzimmer.com)



**NEWMARK**  
ZIMMER

The information contained herein has been obtained from sources deemed reliable but has not been verified and no guarantee, warranty or representation, either express or implied, is made with respect to such information. Terms of sale or lease and availability are subject to change or withdrawal without notice.

910 SE 7TH ST TERRACE, LEE'S SUMMIT, MISSOURI



CONTACT

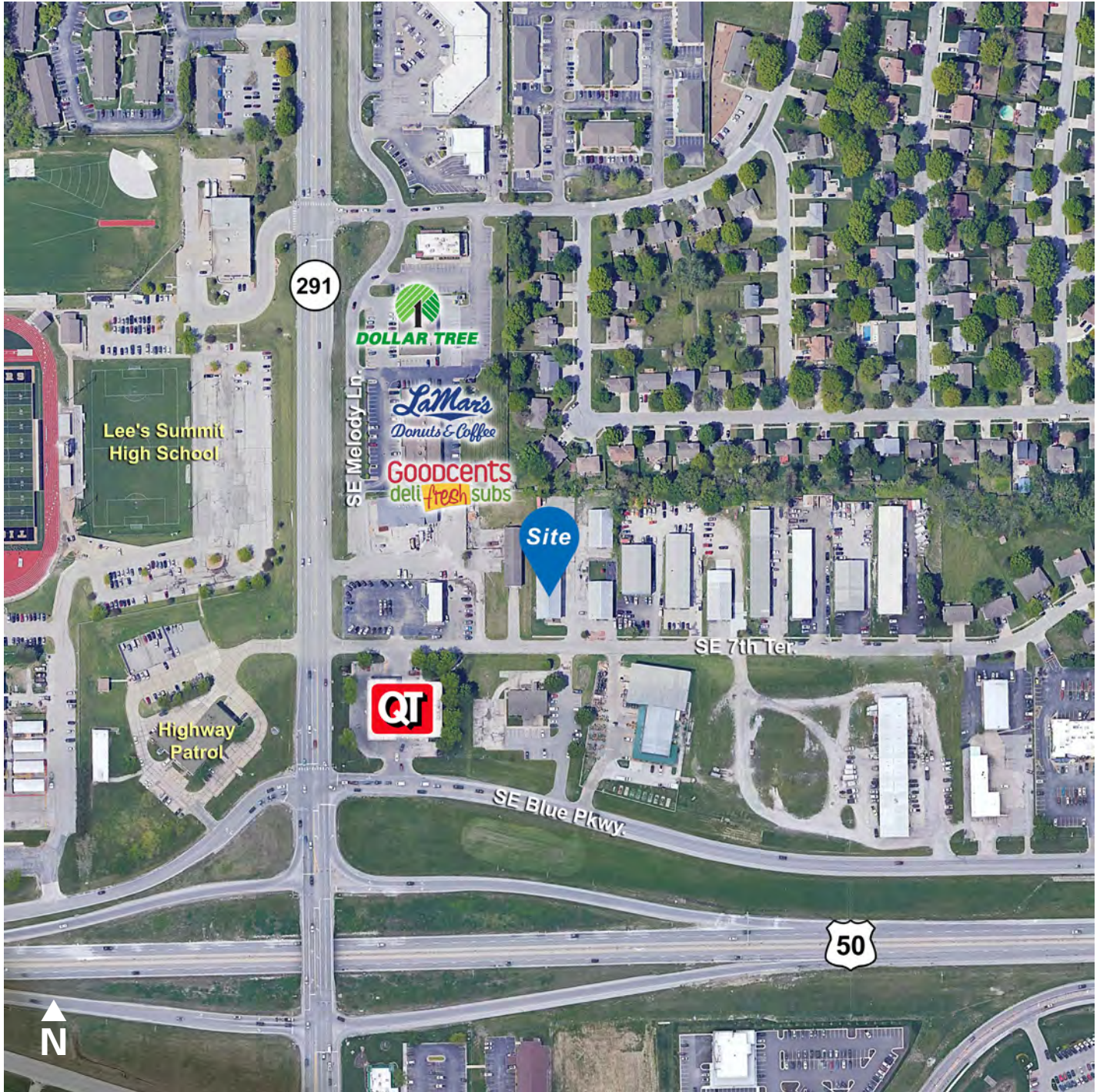
**Michael L. VanBuskirk, SIOR, CCIM, CRE**  
*Executive Managing Director, Principal*  
t 816-512-1010  
mvanbuskirk@nzimmer.com

**Philip J. Botana**  
*Associate*  
t 816-512-1008  
pbotana@nzimmer.com

[nmrkzimmer.com](http://nmrkzimmer.com)

**NEWMARK**  
ZIMMER

910 SE 7TH ST TERRACE, LEE'S SUMMIT, MISSOURI



CONTACT

**Michael L. VanBuskirk, SIOR, CCIM, CRE**  
*Executive Managing Director, Principal*  
t 816-512-1010  
mvanbuskirk@nzimmer.com

**Philip J. Botana**  
*Associate*  
t 816-512-1008  
pbotana@nzimmer.com

[nrmrkzimmer.com](http://nrmrkzimmer.com)

**NEWMARK**  
ZIMMER

910 SE 7TH ST TERRACE, LEE'S SUMMIT, MISSOURI



**CONTACT**

**Michael L. VanBuskirk, SIOR, CCIM, CRE**

*Executive Managing Director, Principal*

t 816-512-1010

[mvanbuskirk@nzimmer.com](mailto:mvanbuskirk@nzimmer.com)

**Philip J. Botana**

*Associate*

t 816-512-1008

[pbotana@nzimmer.com](mailto:pbotana@nzimmer.com)

[nmrkzimmer.com](http://nmrkzimmer.com)

**NEWMARK**  
ZIMMER