

Realty Trust

TRUST IS IN OUR NAME

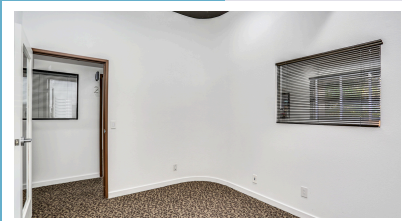
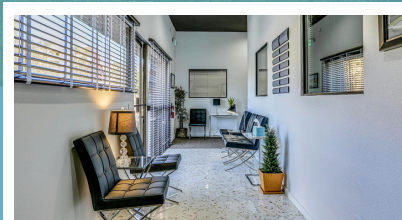
750 E TAHQUITZ CANYON
WAY, EXECUTIVE SUITE 3

OFFICE SPACE
AVAILABLE

FOR
LEASE

SQUARE
FEET

119



ABOUT THE SPACE

Prestigious and professional Kaptur Plaza is walking distance to Downtown Palm Springs, Convention Center, restaurants, hotels, and shops. This executive suite is all-inclusive and has everything one may need throughout the course of their workday. A dedicated parking lot with ample space for tenants and clients. Professionally maintained award-winning complex designed by Mid-Century Architect, Hugh Kaptur!

QUICK FACTS

- \$550 per month, No CAM fees
- All utilities included in rent
- Professional cleaning service of common areas
- Access to lobby, shared conference room, and kitchen
- Ample off-street parking
- Shared private restrooms
- Koffi Cafe conveniently located on the property
- Centered between downtown and PS airport
- Interior Window

GET IN TOUCH
WITH OUR LEASING TEAM

760-327-8000
www.realtytrustps.com

650 E Tahquitz Canyon Way, Suite 2
Palm Springs, CA 92262

Realty Trust

