

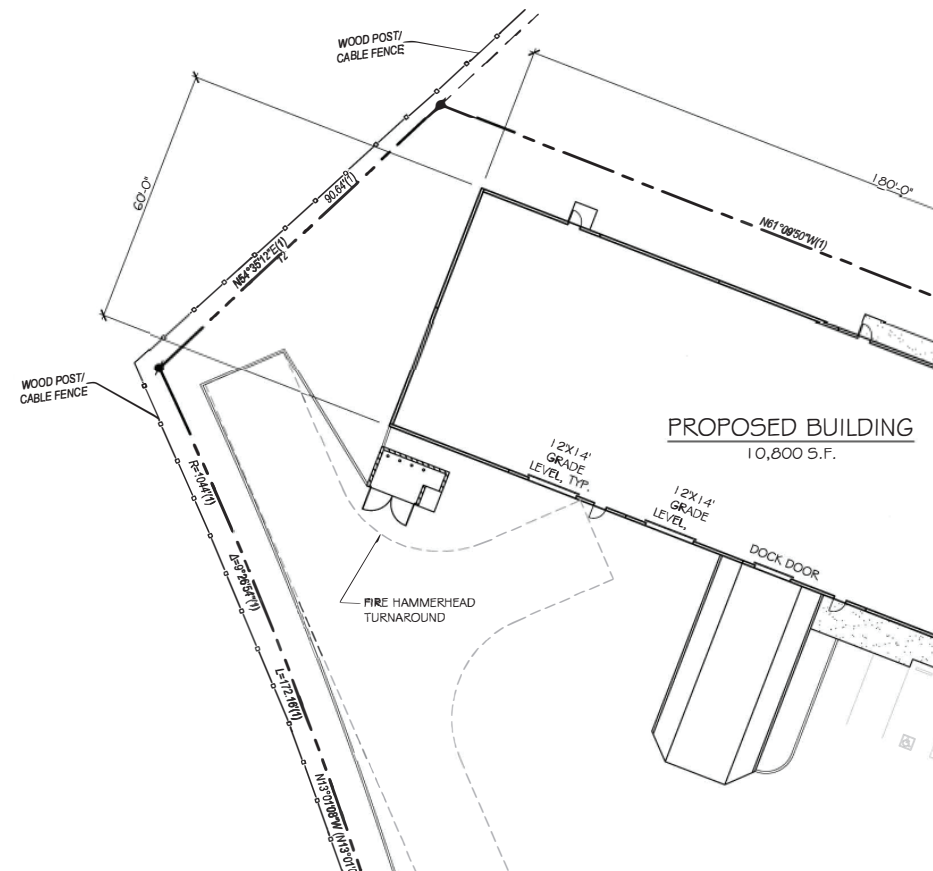
Industrial | For Lease

3840 Prosperity Drive, Rocklin

Proposed $\pm 10,800$ SF Industrial Building on ± 1 Acre Parcel | Estimated Completion

Property Features

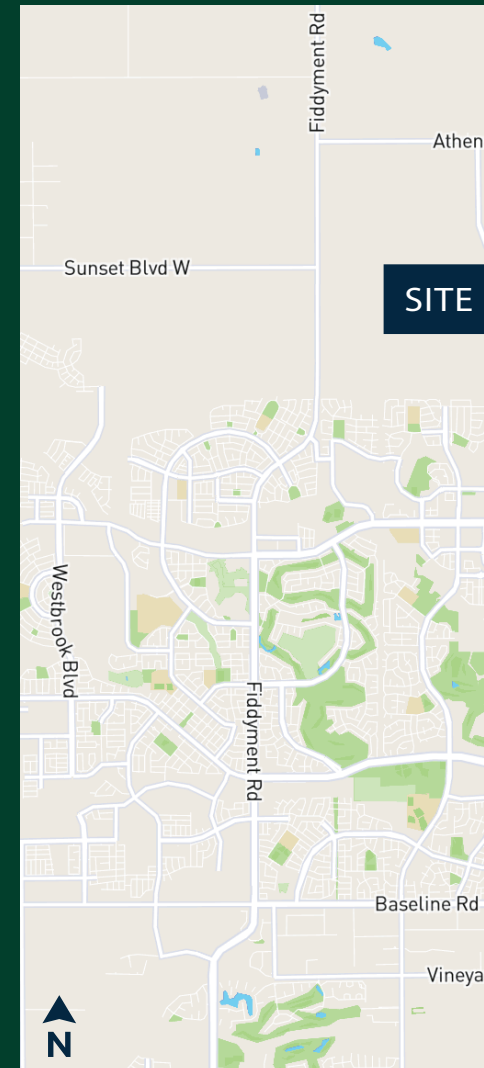
- + Building Area: $\pm 10,800$ SF
- + Office Area: $\pm 2,000$ SF
- + Land Area: ± 1.0 AC
- + APN: 495-020-013
- + Two (2) 12' x 14' Grade Level Doors
- + One (1) Dock High Door
- + Placer County
- + Zoned: IMU-Dc, Light Industrial
- + Existing Sidewalk, Curbs, and Gutters



±10,800 SF Industrial Building

3840 Prosperity Drive | Rocklin, CA 95765

Aerial and Area Map



Contact Us

Zac Sweet, SIOR
Senior Vice President
C: 916 717 4768

Jeff Kvarme
First Vice President
T: 916 203 5257

Tyler Howell
Senior Associate
T: 916 781 4835

Courtney Lee
Associate
C: 916 906 5544