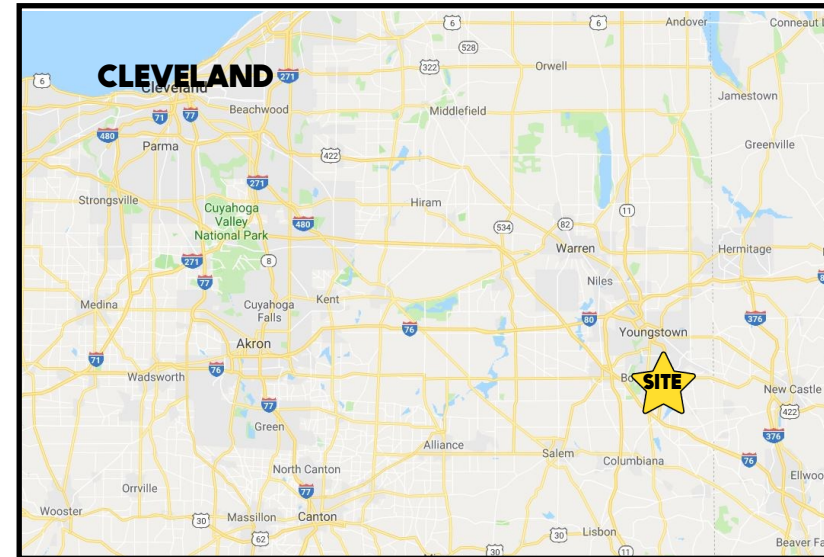


LOCATION

7332 Southern Blvd, Boardman, OH



TRAFFIC

Boardman Canfield Rd = 31,839 VPD

HIGHLIGHTS

- Retail / office space on Southern Blvd
- Adjacent to Get Go and the Southern Park Mall
- Just south of US 224
- Front door parking and glass windows
- Great building and pylon signage

CONTACT

BILL KUTLICK

330.565.5701

bkutlick@platzrealtygroup.com

Office: 330.757.4889 | Fax: 330.294.5622 | 3830 Starr Centre Dr, Suite 2, Canfield, OH 44406

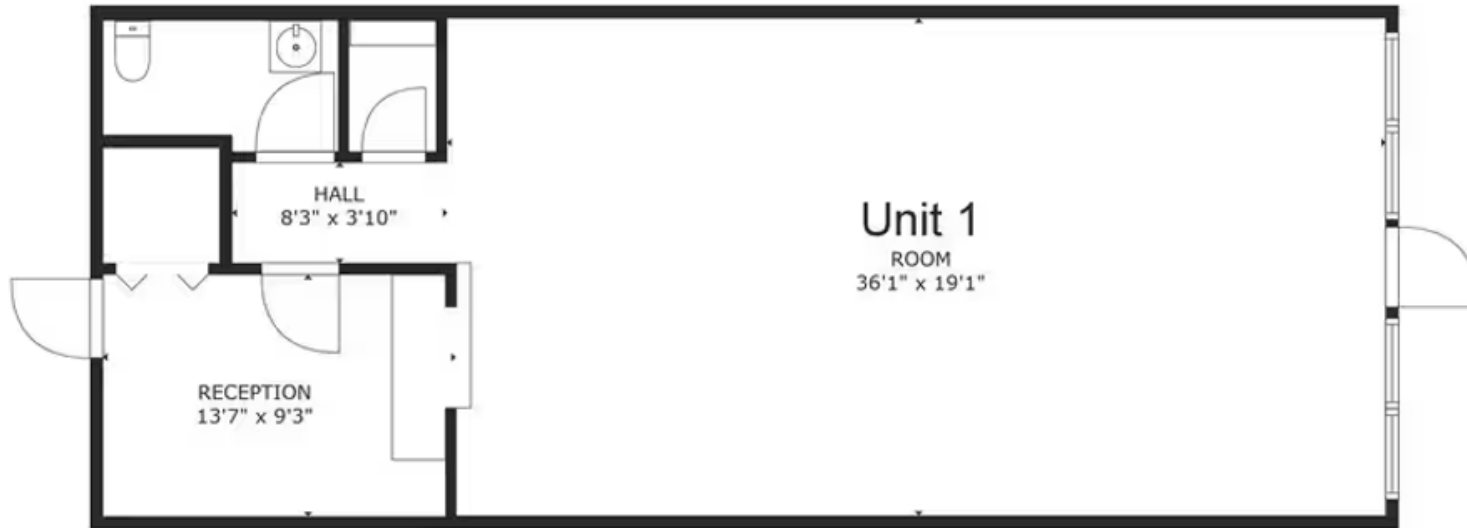
www.PLATZREALTYGROUP.com



Office: 330.757.4889 | Fax: 330.294.5622 | 3830 Starr Centre Dr, Suite 2, Canfield, OH 44406

www.PLATZREALTYGROUP.com

[3D: Unit 1](#)

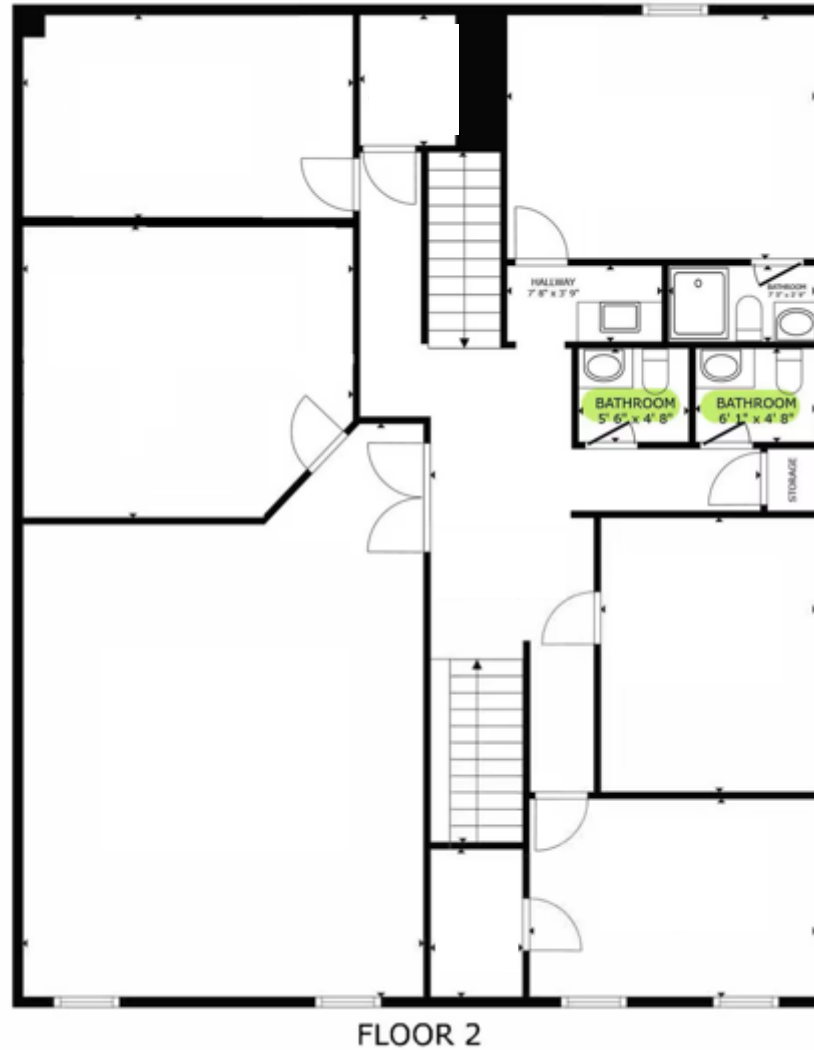


[3D: Unit 2](#)



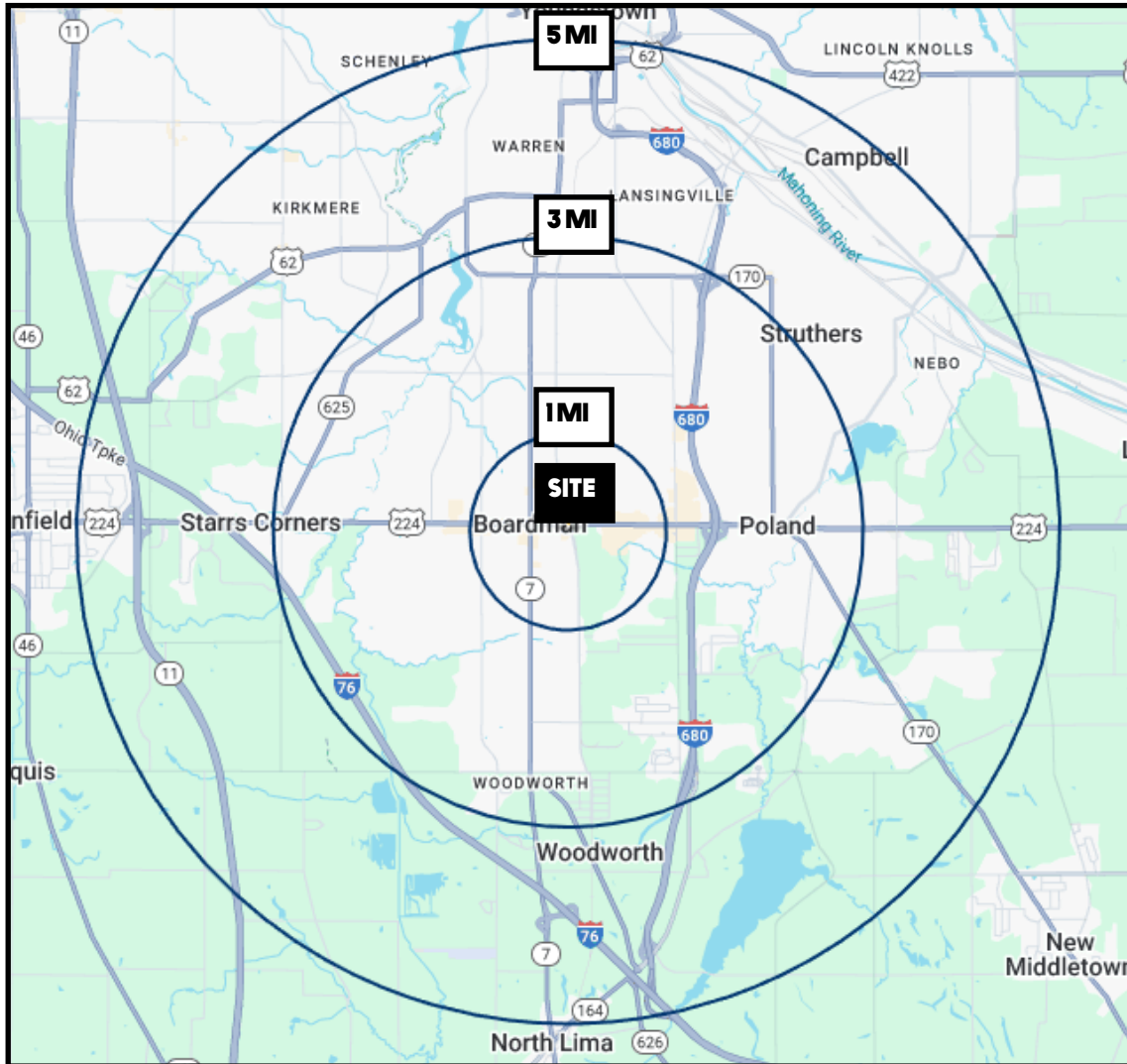
Office: 330.757.4889 | Fax: 330.294.5622 | 3830 Starr Centre Dr, Suite 2, Canfield, OH 44406

[3D: Unit 3](#)



Office: 330.757.4889 | Fax: 330.294.5622 | 3830 Starr Centre Dr, Suite 2, Canfield, OH 44406

www.PLATZREALTYGROUP.com



DEMOGRAPHICS	1 MI	3 MI	5 MI
POPULATION	6,148	52,542	108,783
HOUSEHOLDS	2,775	23,423	47,455
MEDIAN AGE	45	44	44
AVERAGE HH INCOME	\$74,102	\$74,989	\$71,259

SITE INFORMATION

LOCATION	Boardman Township Mahoning County
PARCEL	29-031-0-115
PROPERTY TYPE	Retail / office
YEAR BUILT	1988
AVAILABLE	1: 938 SF 2: 1,008 SF 3 (upstairs office): 1,820 SF
PRICE	\$11.90/SF (Gross)

Office: 330.757.4889 | Fax: 330.294.5622 | 3830 Starr Centre Dr, Suite 2, Canfield, OH 44406