



# SUMMERLIN PROFESSIONAL CENTER

FOR LEASE · PRIME OFFICE OPPORTUNITY  
5252-5294 SUMMERLIN COMMONS WAY · FORT MYERS, FL 33907



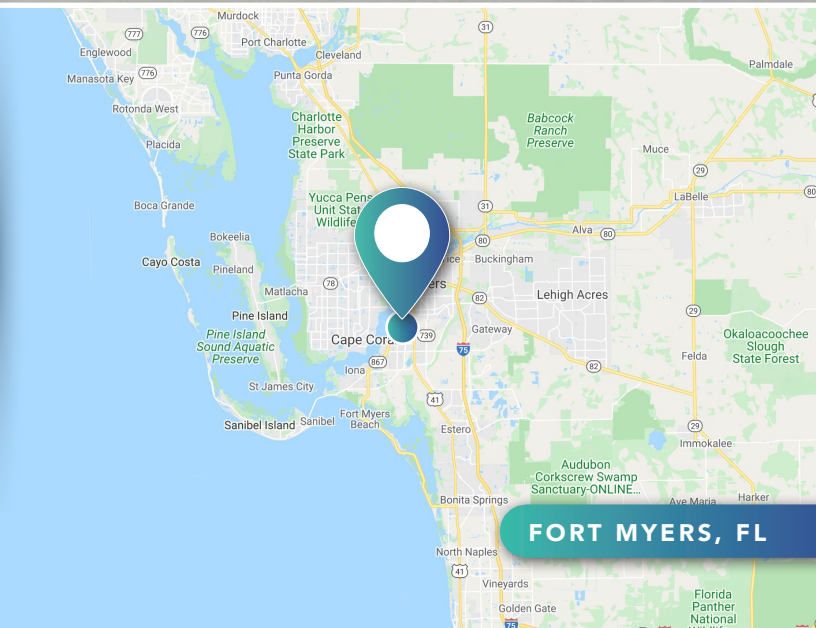
## PROPERTY FEATURES

**LEASE RATE:**  
\$12.00 PSF NNN

**AVAILABLE:**  
Unit 1004 - 1,977± SF  
Unit 1203 - 2,083± SF

**ZONING:**  
CG (Lee County)

**LOCATION:**  
The subject site is located on the SEC of Summerlin Commons Blvd & Summerlin Commons Way in Fort Myers, Florida.



FORT MYERS, FL

**CONTACT US:**

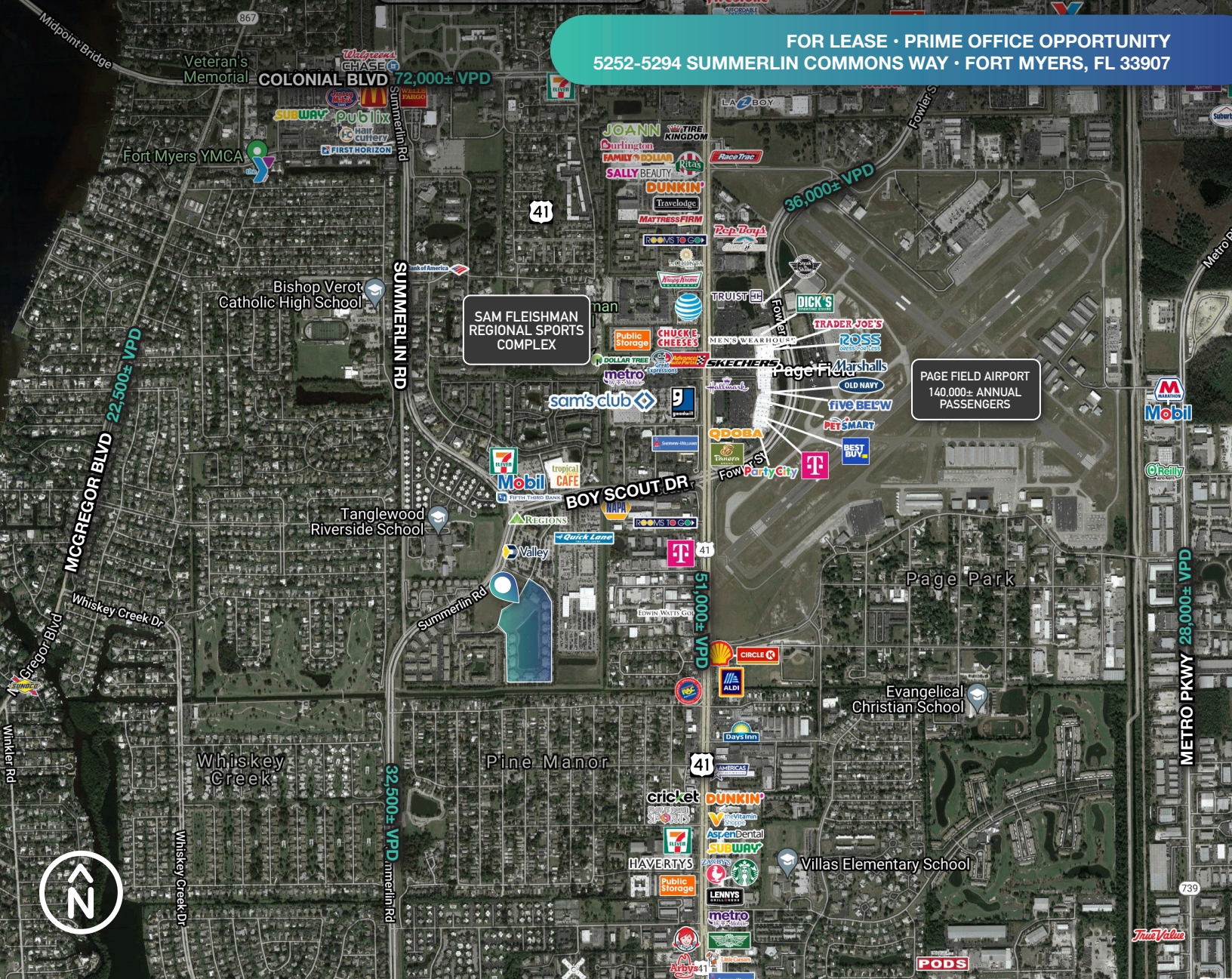
**KIM DAUGHERTY**  
Senior Advisor  
239.334.3040  
Kim.Daugherty@TrinityCRE.com





# SUMMERLIN PROFESSIONAL CENTER

FOR LEASE · PRIME OFFICE OPPORTUNITY  
5252-5294 SUMMERLIN COMMONS WAY · FORT MYERS, FL 33907



2024 DEMOGRAPHICS	1 MI RADIUS	3 MI RADIUS	5 MI RADIUS
EST. POPULATION:	12,889	63,497	155,213
EST. EMPLOYMENT DENSITY:	7,804	62,427	110,571
MEDIAN H.H. INCOME:	\$68,720	\$96,151	\$107,944



TrinityCRE.com

9450 Corkscrew Palms Cir • Suite 101 • Estero, FL 33928  
© 2025 Trinity Commercial Group

This information is considered accurate, but not guaranteed.



## PROPERTY PHOTOS



**Unit 1004 - 1,977± SF**

**Unit 1203 - 2,083± SF**

