



# For Lease

## Metropointe Commerce Center

### Property highlights:

- Available January 2025
- 16,715 SF standalone building
- ±10,036 SF office
- ±6,679 SF air-conditioned warehouse
- Concrete block construction with red brick facade
- 1 grade-level door & 1 truck well
- 18' clear height
- 3-phase power
- Sprinklered
- I-275 access: 1 mile
- U.S. Highway 19 access: 2.5 miles
- Gandy Blvd. access: 0.25 miles

**9875 18th St. N.**

**St. Petersburg, FL 33716**

**John C. Dunphy, CCIM, SIOR**

+1 813 387 1312

[johnc.dunphy@am.jll.com](mailto:johnc.dunphy@am.jll.com)

**Stephanie Meros**

+1 813 387 1285

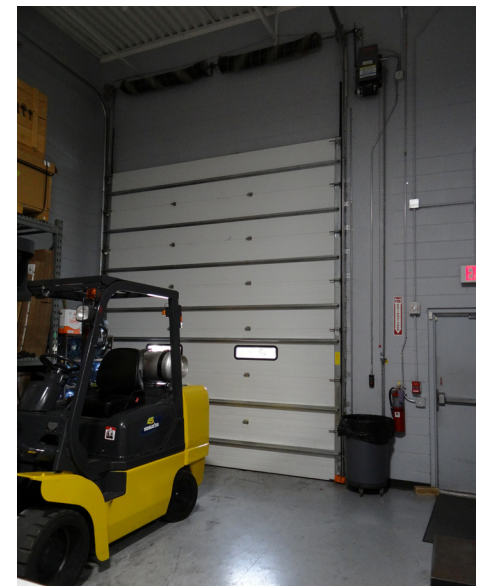
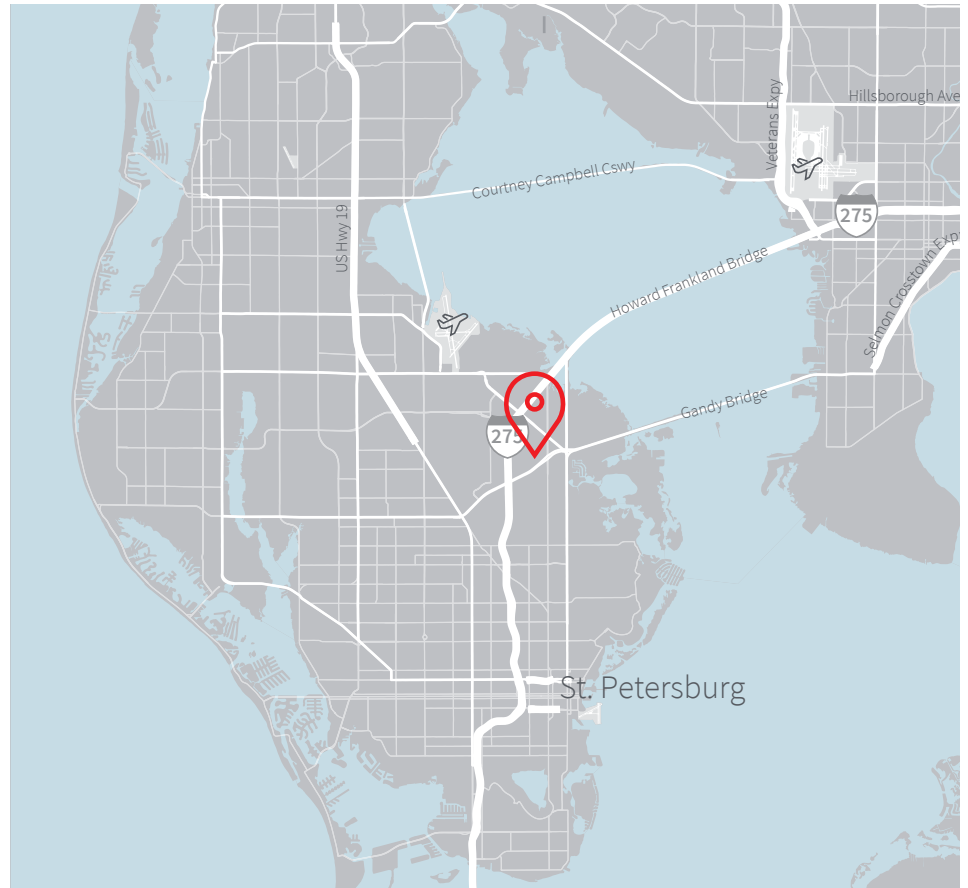
[stephanie.meros@am.jll.com](mailto:stephanie.meros@am.jll.com)

## Ideal location

Metropointe Commerce Center is located just 1.0 mile from Interstate 275, 0.25 miles from Gandy Boulevard and 2.5 miles from U.S. Highway 19.

Located approximately five miles south of the St. Petersburg–Clearwater Airport and less than 20 minutes from Tampa International Airport, this business park allows for easy domestic and international travel.

The central location of this park and access to both the Howard Franklin and Gandy bridges allows businesses to draw an employment base from both sides of Tampa bay.

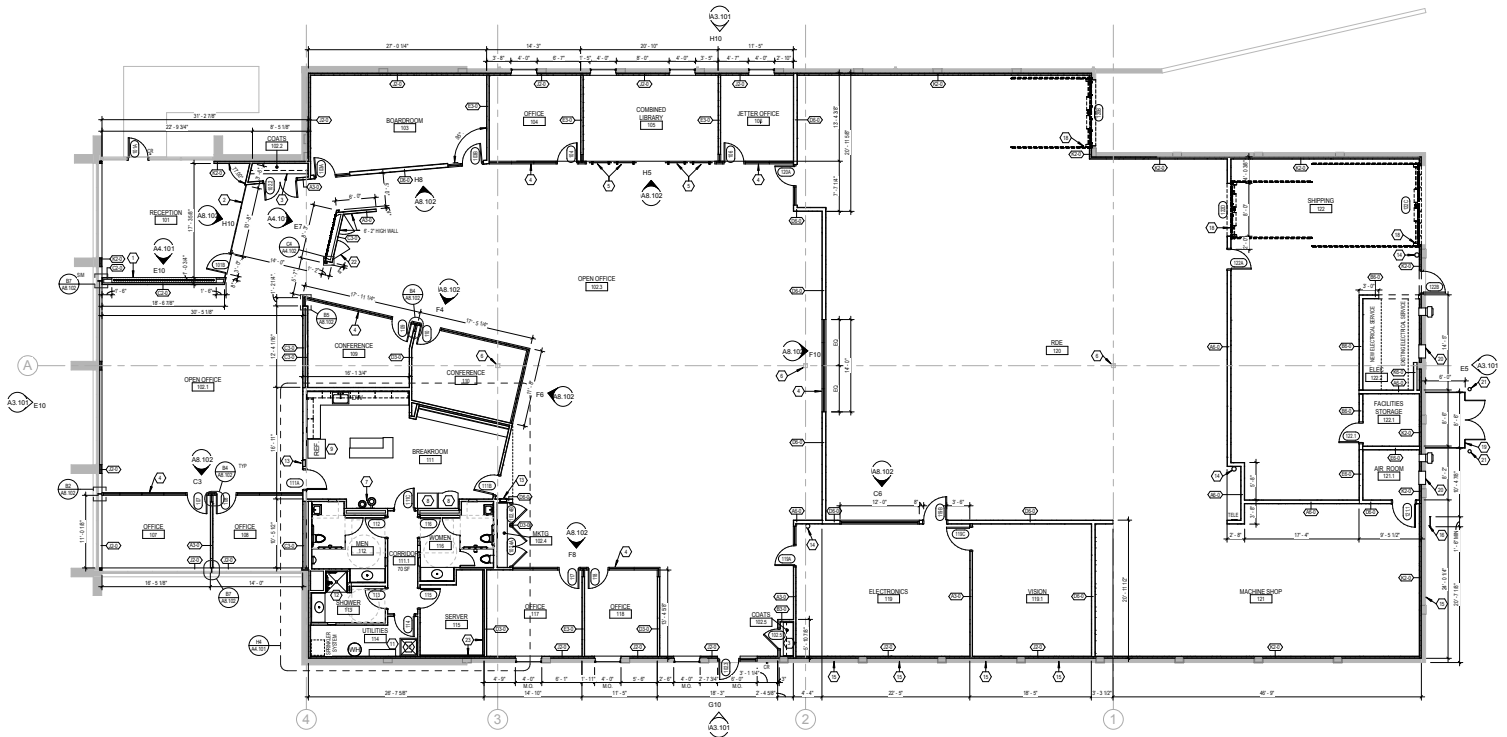


# Floorplan

9875 18th St. N.

St. Petersburg, FL 33716

16,715 SF



For more information please contact:

John Dunphy, CCIM, SIOR  
+1 813 387 1312  
johnc.dunphy@am.jll.com

Stephanie Meros  
+1 813 387 1285  
stephanie.meros@am.jll.com

