



Asking Rate:

**\$11.00/SF**

NNN = \$2.32/SF

FOR LEASE

## 4150 Hunsaker Drive, Suite D East Lansing, MI 48823

1,800 SF of Flex Space Available

### Property Highlights

- 1 of 4 Suites Within a 12,000 SF Facility
- Mezzanine for Storage
- Ample Parking Spaces
- (1) 14' x 16' Electric Grade Level Overhead Door Exclusive to Suite
- Located in Bath Township Within Minutes of East Lansing and Numerous Amenities

#### CONTACT US



**Julie O'Brien**

Senior Vice President

517 230 8944

[julie.obrien@colliers.com](mailto:julie.obrien@colliers.com)

**Colliers Lansing**

2501 Coolidge Rd Suite 300

East Lansing, MI 48823

[colliers.com/lansing](http://colliers.com/lansing)

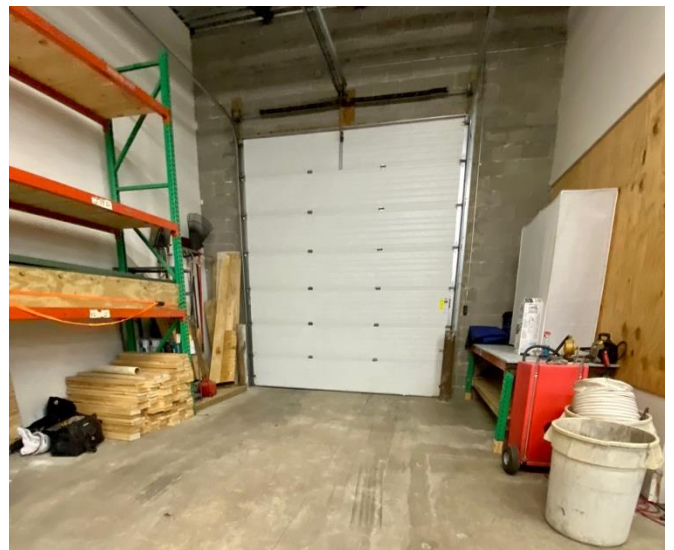




1,800 SF of Flex Space Available

Colliers

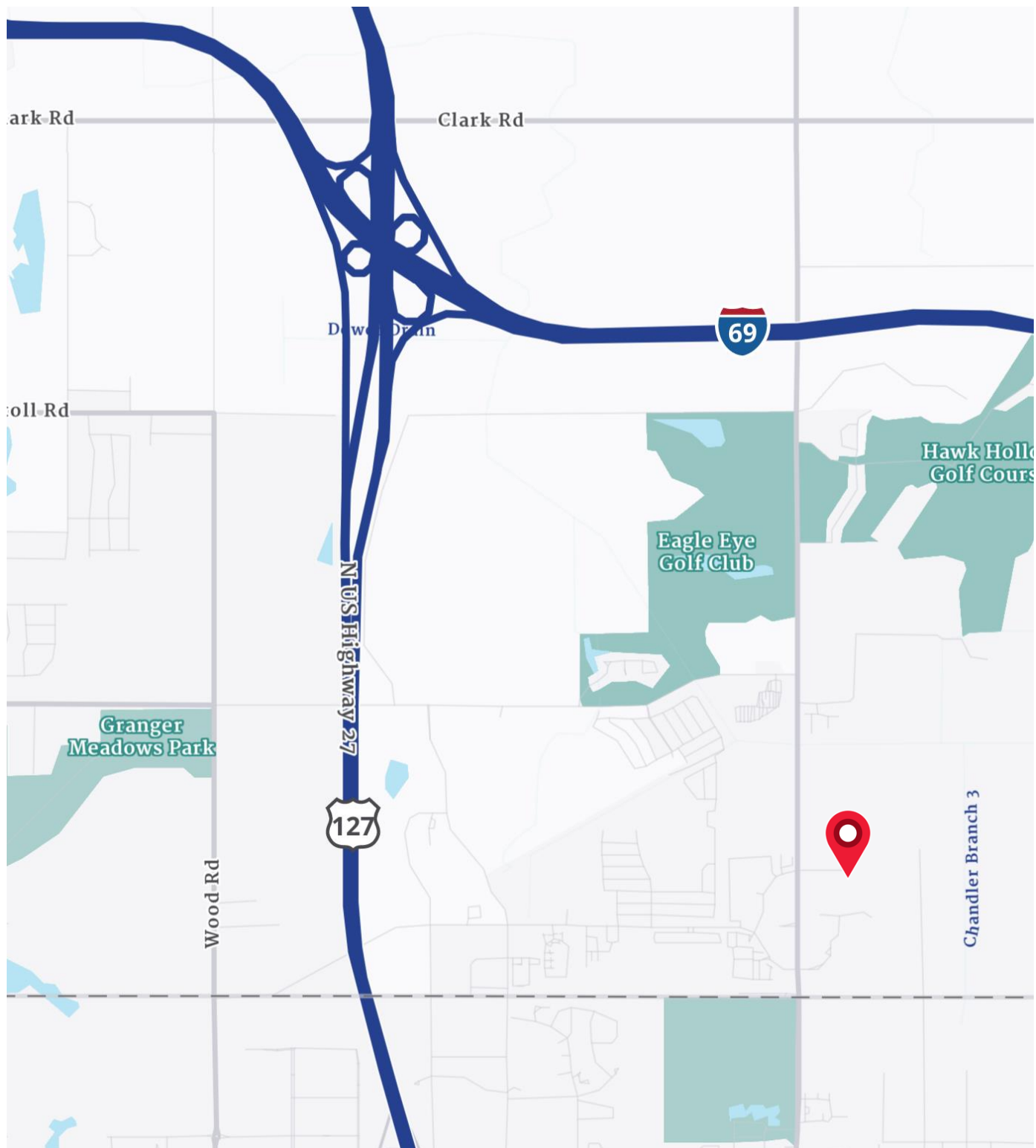
## Exterior and Interior Photos



1,800 SF of Flex Space Available

Colliers

## Location Map





1,800 SF of Flex Space Available

Colliers

## Aerial Map





1,800 SF of Flex Space Available

Colliers

## Building Specifications



### Highlights

<b>Gross SF:</b>	1,800 SF
<b>Year Built:</b>	2001
<b>Ceiling Height:</b>	20' with 16' Clearance
<b>Grade Level Doors:</b>	(1) 14' x 16'
<b>Heating:</b>	Forced Air Furnace
<b>Power:</b>	3 Phase; 120/240V
<b>Lighting</b>	LED Lights
<b>Floors:</b>	6" Concrete
<b>Restrooms:</b>	(1)
<b>Utility Providers</b>	Gas/Electricity – Consumers Energy Water - Well Sewer - Municipal Cable - Comcast



**Julie O'Brien**  
Senior Vice President  
517 230 8944  
[julie.obrien@colliers.com](mailto:julie.obrien@colliers.com)

*We have no reason to doubt the accuracy of information contained herein, but we cannot guarantee it.  
All information should be verified prior to purchase and/or lease.*