

Truck Parking Sublease Available

375 Hwy 24/27, Midland, NC



LEGACY



Geoff Partel

Email: gpartel@legacycre.com

Phone Number: (917) 763.6166

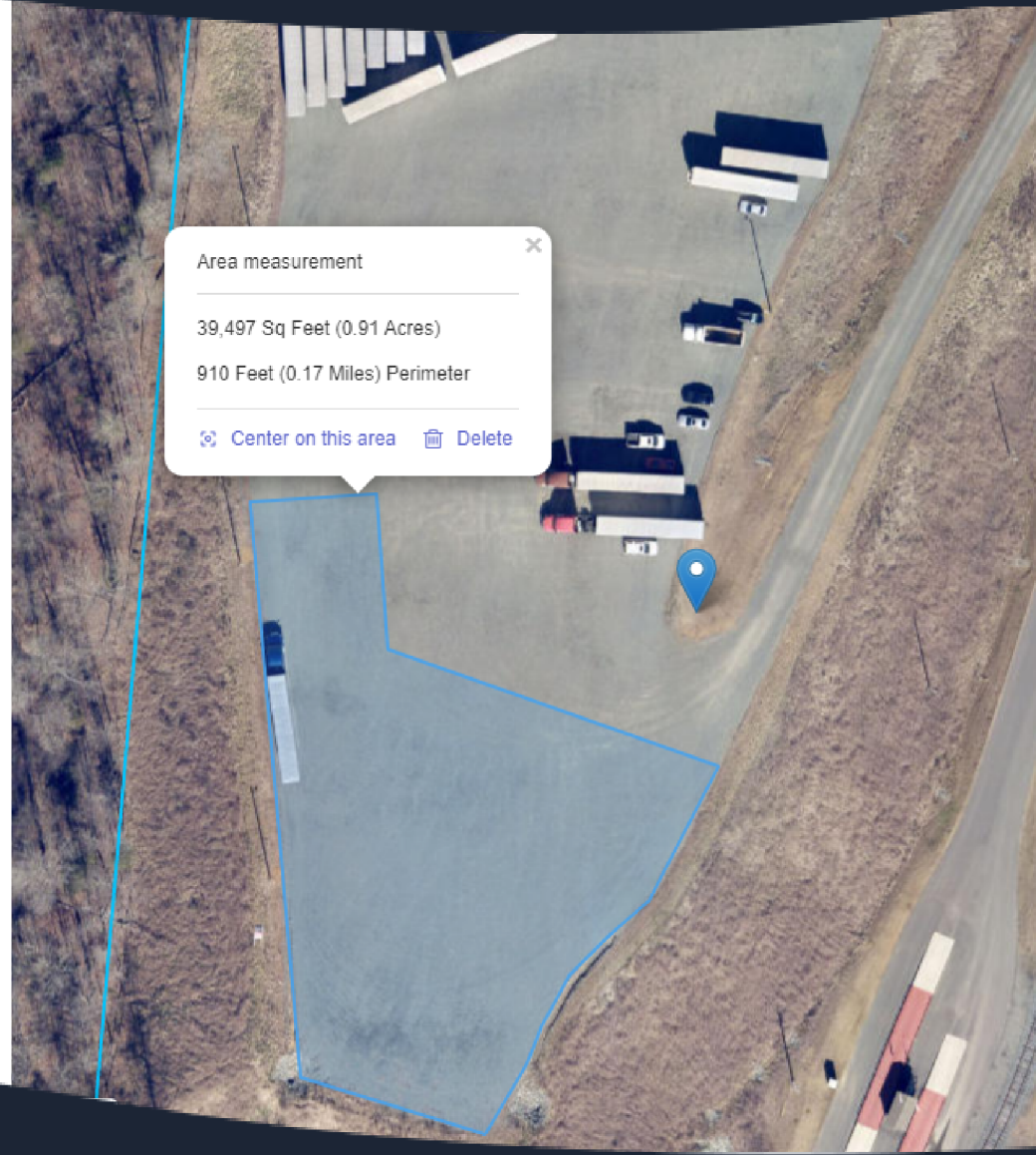
Andrew Blumenthal

Email: ablumenthal@legacycre.com

Phone Number: (704) 618.1802



375 Hwy 24/27, Midland, NC



Geoff Partel
Email: gpartel@legacycre.com
Phone Number: (917) 763.6166

Andrew Blumenthal
Email: ablumenthal@legacycre.com
Phone Number: (704) 618.1802

- .75-acre sublease located approximately five miles from I-485 (exit 41, Albemarle Rd)
- 23 miles to Charlotte Douglas Airport.
- Adjacent to rail transload yard served by ACWR.
- Use of scales can be accessed for a separate fee.
- Fully Lit Secure lot with Live feed 24/7 surveillance
- Automated Security Gate.
- Asking \$3250.00 per month



LEGACY

704.373.1800



Compacted crushed stone lot ideal for logistics company or last-mile carrier needing extra space to store trailers, shipping containers, heavy equipment or large construction equipment.

Just east of Charlotte in a fast growing area just off main throughfare between Charlotte and Albemarle.

