

CYPRESS POINT OFFICE PARK BLDG E

10006 N Dale Marby Hwy | Tampa, FL 33618

Office For Lease

916 - 2,308 SF



Leasing Information:

Jon Slater
813.505.3612
jslater@lpc.com

Lincoln

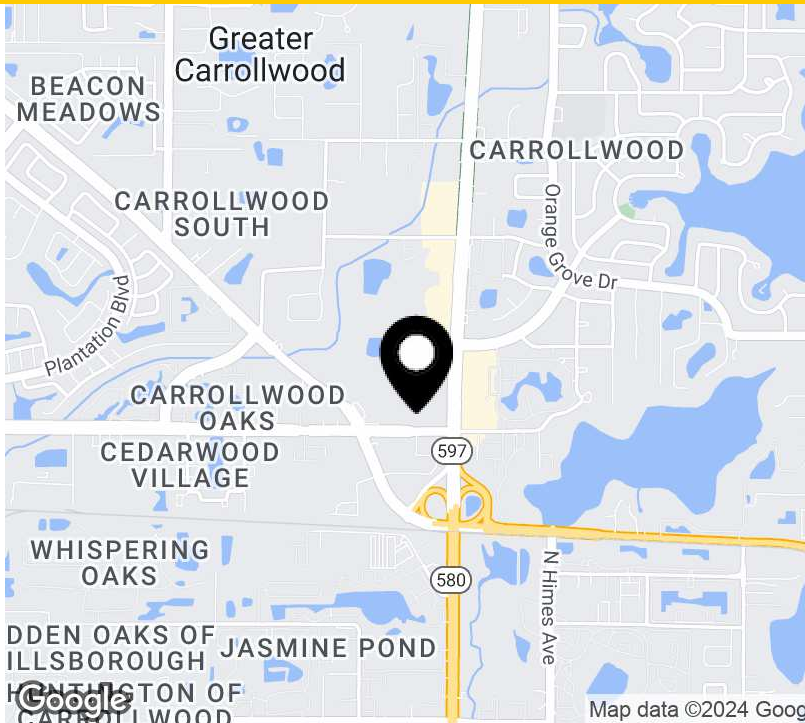
Lincoln Property Company
490 1st Avenue South, Suite 210
St. Petersburg, FL 33701

www.lpc.com

CYPRESS POINT OFFICE PARK – BLDG E

Office For Lease

10006 N Dale Marby Hwy | Tampa, FL 33618



Property Highlights

- Suite E-100A - 2,308 RSF
- Suite E-204 - 916 RSF
- Suite E-108 - 1,187 RSF
- Lease expires on December 31, 2027
- Call for pricing
- Available for immediate occupancy
- Furniture Available

Property Overview

Cypress Point Office Park is perfectly located to service Northwest, Westshore, and South Pasco counties, with direct access to Veterans Expressway. Conveniently adjacent to Publix, WingStop, Jersey Mike’s, Planet Smoothie, and Starbucks, along with a host of other casual dining options.

Availabilities	SF	Lease Rate	Date Available
Suite E-100A	2,308 SF	Negotiable	Immediate
Suite E-204	916 SF	Negotiable	Immediate
Suite E-108	1,187 SF	Negotiable	Immediate

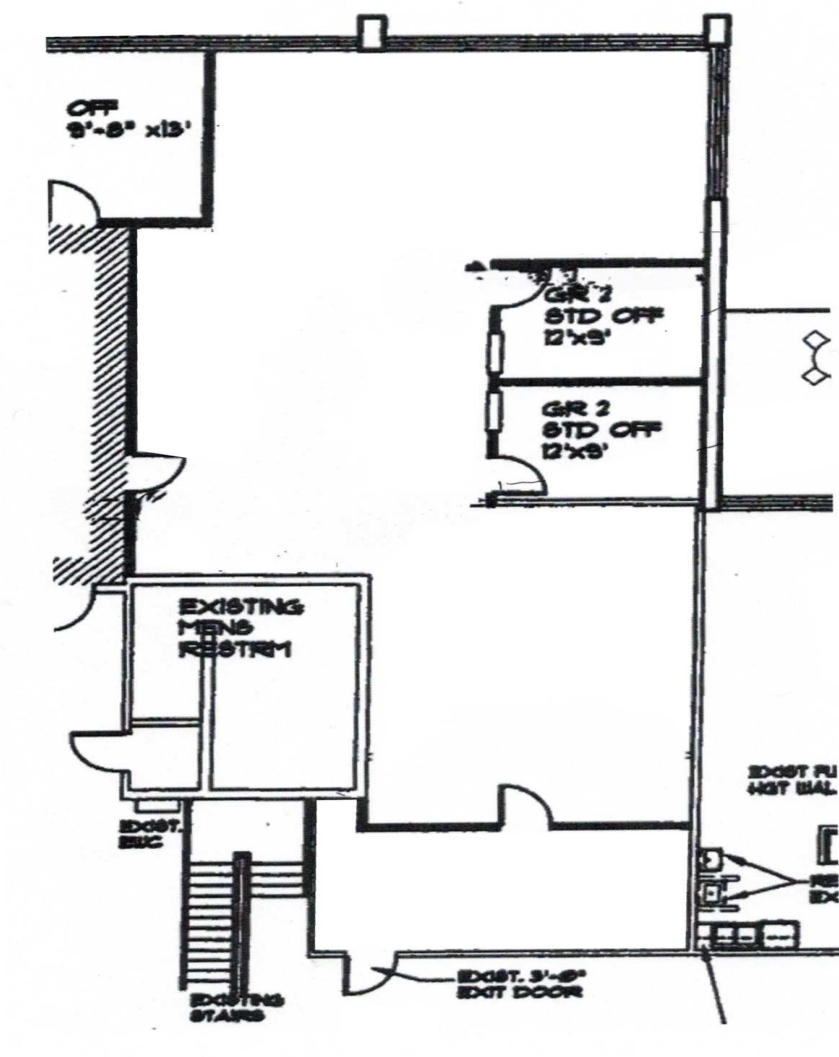
Jon Slater
813.505.3612
jslater@lpc.com



CYPRESS POINT OFFICE PARK - BLDG E

Suite E-100A - 2,308 RSF

10006 N Dale Marby Hwy | Tampa, FL 33618



Suite	Size	Lease Rate	Description
■ Suite E-100A	2,308 SF	Negotiable	Lease expires on December 31, 2027 Available for immediate occupancy Call for pricing Furniture Available

Jon Slater
813.505.3612
jslater@lpc.com

Lincoln

CYPRESS POINT OFFICE PARK - BLDG E

Additional Photos

10006 N Dale Marby Hwy | Tampa, FL 33618



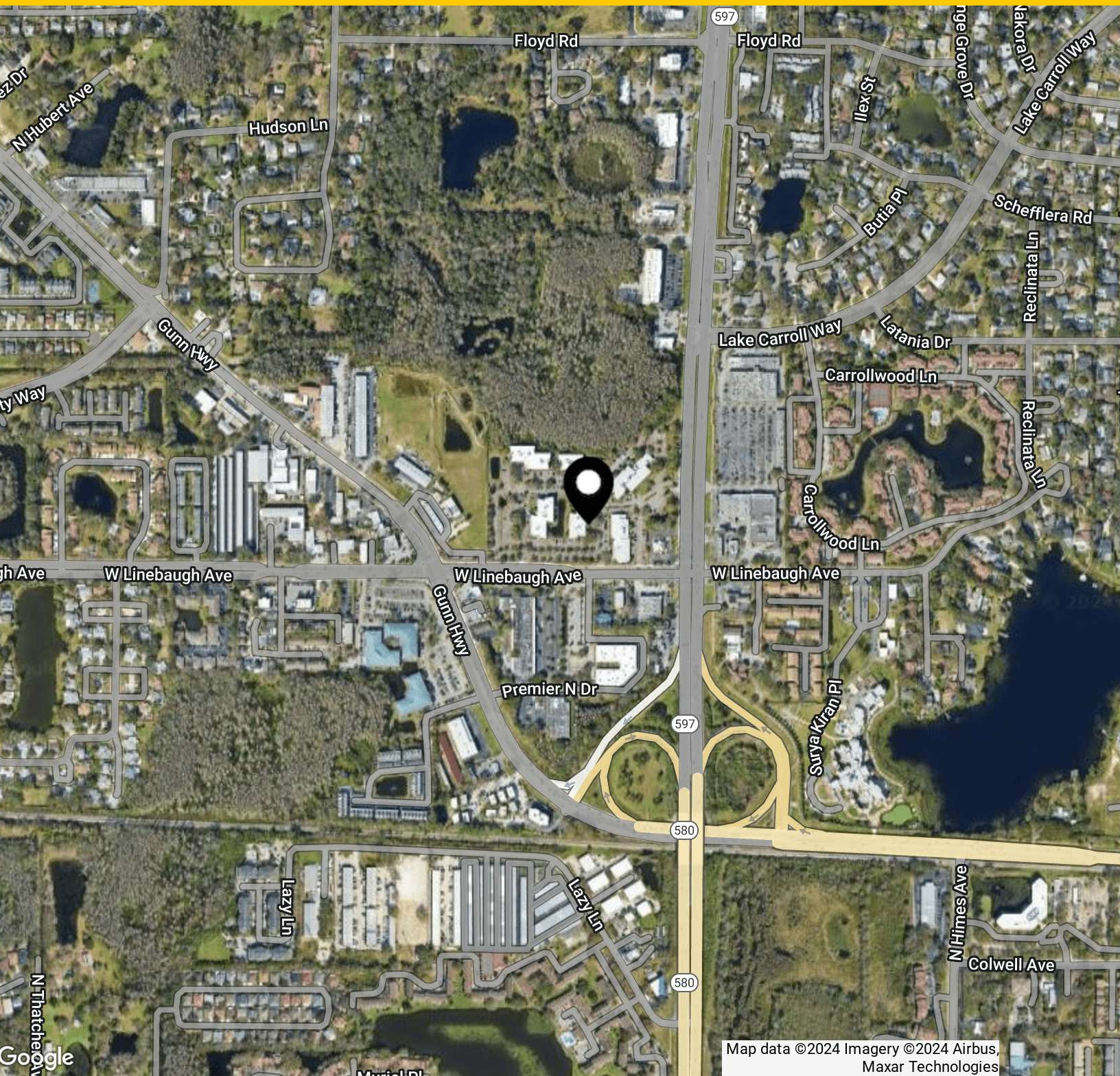
Jon Slater
813.505.3612
j Slater@lpc.com

Lincoln

CYPRESS POINT OFFICE PARK - BLDG E

Aerial Map

10006 N Dale Marby Hwy | Tampa, FL 33618



Jon Slater
813.505.3612
jslater@lpc.com

Lincoln



CYPRESS POINT OFFICE PARK BLDG E

10006 N Dale Marby Hwy
Tampa, FL 33618

Leasing Information:

Jon Slater
813.505.3612
jslater@lpc.com

Lincoln

Lincoln Property Company
490 1st Avenue South, Suite 210
St. Petersburg, FL 33701

www.lpc.com