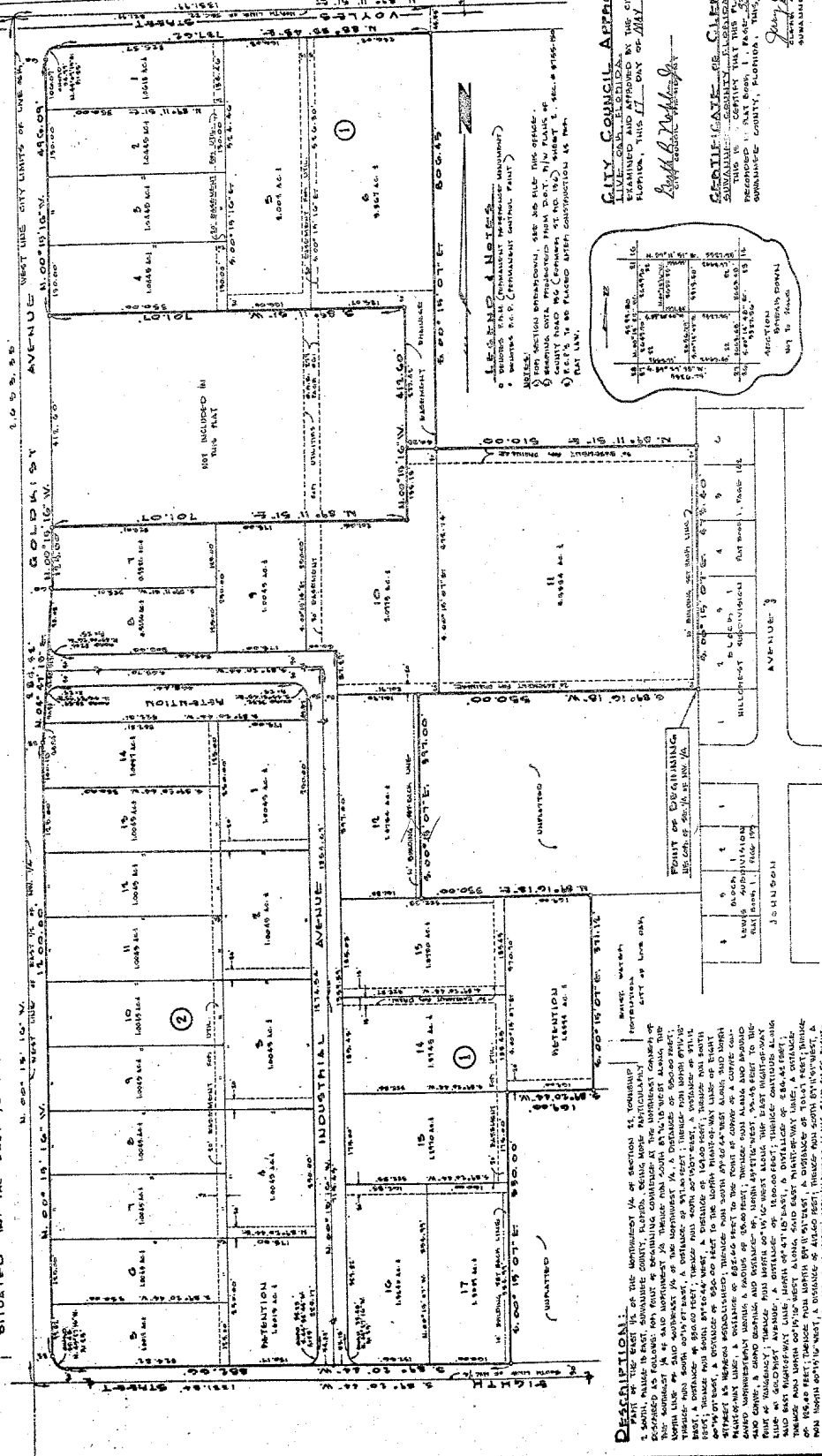
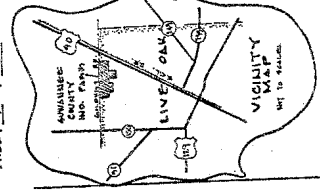


SUWANNEE COUNTY INDUSTRIAL PARK

SITUATED IN THE EAST 1/4 OF THE NORTHWEST 1/4 OF SECTION 14, TOWNSHIP 3 SOUTH, RANGE 19 EAST, SUWANNEE COUNTY, FLORIDA, CITY OF LIVE OAK, FLORIDA.



DESCRIPTION: This plat is a true and correct representation of the lands described in the plat and is approved by the City Council of the City of Live Oak, Florida, this 17th day of May, 1935.

CERTIFICATE OF CLERK:
I, *John B. ...*, Clerk of the City of Live Oak, Florida, do hereby certify that this plat is a true and correct representation of the lands described in the plat and is approved by the City Council of the City of Live Oak, Florida, this 17th day of May, 1935.

SURVEYOR'S CERTIFICATE:
I, *John B. ...*, Surveyor, do hereby certify that this plat is a true and correct representation of the lands described in the plat and is approved by the City Council of the City of Live Oak, Florida, this 17th day of May, 1935.

DATE: May 12, 1935
J. STEPHAN FRATER & ASSOCIATES
PLAT BOOK I Page 337
SHEET 1 OF 2

LEGEND

1	RETIRED
2	UNIMPROVED
3	UNIMPROVED
4	UNIMPROVED
5	UNIMPROVED
6	UNIMPROVED
7	UNIMPROVED
8	UNIMPROVED
9	UNIMPROVED
10	UNIMPROVED
11	UNIMPROVED
12	UNIMPROVED
13	UNIMPROVED
14	UNIMPROVED
15	UNIMPROVED
16	UNIMPROVED
17	UNIMPROVED

APPROVAL AND DECLARATION:
I, *John B. ...*, Surveyor, do hereby certify that this plat is a true and correct representation of the lands described in the plat and is approved by the City Council of the City of Live Oak, Florida, this 17th day of May, 1935.

DATE: May 12, 1935
J. STEPHAN FRATER & ASSOCIATES
PLAT BOOK I Page 337
SHEET 1 OF 2

DESCRIPTION: This plat is a true and correct representation of the lands described in the plat and is approved by the City Council of the City of Live Oak, Florida, this 17th day of May, 1935.

CERTIFICATE OF CLERK:
I, *John B. ...*, Clerk of the City of Live Oak, Florida, do hereby certify that this plat is a true and correct representation of the lands described in the plat and is approved by the City Council of the City of Live Oak, Florida, this 17th day of May, 1935.

DATE: May 12, 1935
J. STEPHAN FRATER & ASSOCIATES
PLAT BOOK I Page 337
SHEET 1 OF 2

DESCRIPTION: This plat is a true and correct representation of the lands described in the plat and is approved by the City Council of the City of Live Oak, Florida, this 17th day of May, 1935.

CERTIFICATE OF CLERK:
I, *John B. ...*, Clerk of the City of Live Oak, Florida, do hereby certify that this plat is a true and correct representation of the lands described in the plat and is approved by the City Council of the City of Live Oak, Florida, this 17th day of May, 1935.

DATE: May 12, 1935
J. STEPHAN FRATER & ASSOCIATES
PLAT BOOK I Page 337
SHEET 1 OF 2

DESCRIPTION: This plat is a true and correct representation of the lands described in the plat and is approved by the City Council of the City of Live Oak, Florida, this 17th day of May, 1935.

CERTIFICATE OF CLERK:
I, *John B. ...*, Clerk of the City of Live Oak, Florida, do hereby certify that this plat is a true and correct representation of the lands described in the plat and is approved by the City Council of the City of Live Oak, Florida, this 17th day of May, 1935.

DATE: May 12, 1935
J. STEPHAN FRATER & ASSOCIATES
PLAT BOOK I Page 337
SHEET 1 OF 2

DESCRIPTION: This plat is a true and correct representation of the lands described in the plat and is approved by the City Council of the City of Live Oak, Florida, this 17th day of May, 1935.

CERTIFICATE OF CLERK:
I, *John B. ...*, Clerk of the City of Live Oak, Florida, do hereby certify that this plat is a true and correct representation of the lands described in the plat and is approved by the City Council of the City of Live Oak, Florida, this 17th day of May, 1935.

DATE: May 12, 1935
J. STEPHAN FRATER & ASSOCIATES
PLAT BOOK I Page 337
SHEET 1 OF 2