

7912-7918

Metrose Avenue



Rachel Adams (818) 697-9375 , rachel@illicre.com, DRE# 02052879

Ethan Grabel (818) 697-9373 , ethan@illicre.com, DRE# 02082469

Please visit us at:



This information has been secured from sources we believe to be reliable, but we make no representations or warranties, expressed or implied, as to the accuracy of the information. References to square footage are approximate. References to neighboring retailers are subject to change, and may not be adjacent to the vacancy being marketed either prior to, during, or after leases are signed. Lessee must verify the information and bears all risk for any inaccuracies.

5990 Sepulveda Blvd., Ste. 600 · Sherman Oaks, CA 91411 · 818.501.2212/Phone · 818.501.2202/Fax · www.illicre.com · DRE #01834124



7912-7918

Metrose Avenue

PROPERTY FEATURES

- Suite 4 available - 500 SF second floor
 - Restroom in unit
 - Unit has kitchenette and hard wood flooring
- Suite 5 available - 500 SF second floor
 - Restroom in unit
 - Unit has kitchenette

Rachel Adams (818) 697-9375 , rachel@illicre.com, DRE# 02052879

Ethan Grabel (818) 697-9373 , ethan@illicre.com, DRE# 02082469

Please visit us at:



This information has been secured from sources we believe to be reliable, but we make no representations or warranties, expressed or implied, as to the accuracy of the information. References to square footage are approximate. References to neighboring retailers are subject to change, and may not be adjacent to the vacancy being marketed either prior to, during, or after leases are signed. Lessee must verify the information and bears all risk for any inaccuracies.

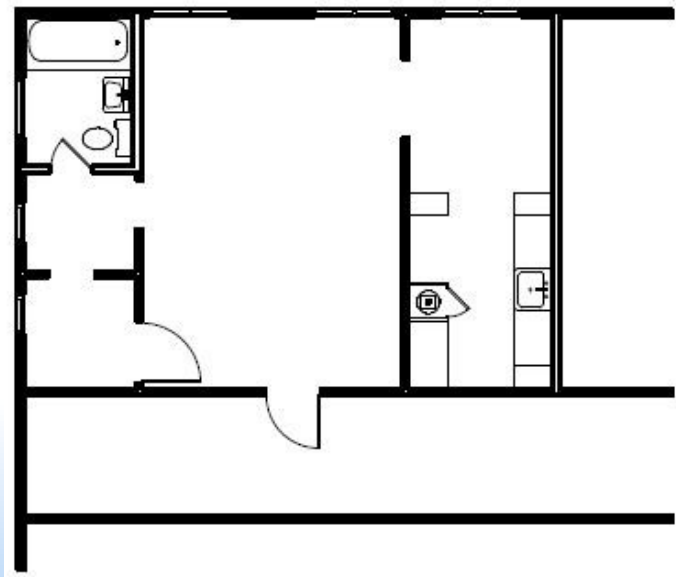
5990 Sepulveda Blvd., Ste. 600 · Sherman Oaks, CA 91411 · 818.501.2212/Phone · 818.501.2202/Fax · www.illicre.com · DRE #01834124



7912-7918 *Melrose Avenue*

FLOOR PLAN

Suite 4



Rachel Adams (818) 697-9375 , rachel@illicre.com, DRE# 02052879

Ethan Grabel (818) 697-9373 , ethan@illicre.com, DRE# 02082469

Please visit us at:

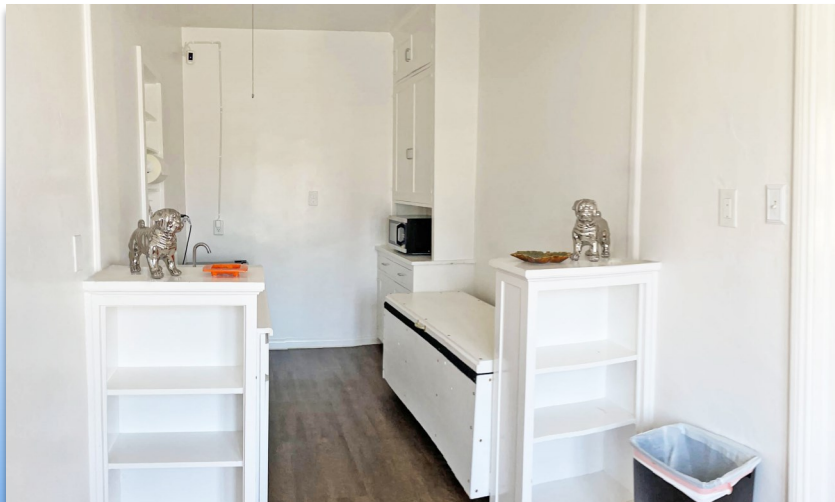


This information has been secured from sources we believe to be reliable, but we make no representations or warranties, expressed or implied, as to the accuracy of the information. References to square footage are approximate. References to neighboring retailers are subject to change, and may not be adjacent to the vacancy being marketed either prior to, during, or after leases are signed. Lessee must verify the information and bears all risk for any inaccuracies.

5990 Sepulveda Blvd., Ste. 600 · Sherman Oaks, CA 91411 · 818.501.2212/Phone · 818.501.2202/Fax · www.illicre.com · DRE #01834124



7912-7918 *Metrose Avenue*



Rachel Adams (818) 697-9375 , rachel@illicre.com, DRE# 02052879
Ethan Grabel (818) 697-9373 , ethan@illicre.com, DRE# 02082469

Please visit us at:



This information has been secured from sources we believe to be reliable, but we make no representations or warranties, expressed or implied, as to the accuracy of the information. References to square footage are approximate. References to neighboring retailers are subject to change, and may not be adjacent to the vacancy being marketed either prior to, during, or after leases are signed. Lessee must verify the information and bears all risk for any inaccuracies.

5990 Sepulveda Blvd., Ste. 600 · Sherman Oaks, CA 91411 · 818.501.2212/Phone · 818.501.2202/Fax · www.illicre.com · DRE #01834124



7912-7918 *Metrose Avenue*

SUITE 5



Rachel Adams (818) 697-9375 , rachel@illicre.com, DRE# 02052879
Ethan Grabel (818) 697-9373 , ethan@illicre.com, DRE# 02082469

Please visit us at:



This information has been secured from sources we believe to be reliable, but we make no representations or warranties, expressed or implied, as to the accuracy of the information. References to square footage are approximate. References to neighboring retailers are subject to change, and may not be adjacent to the vacancy being marketed either prior to, during, or after leases are signed. Lessee must verify the information and bears all risk for any inaccuracies.

5990 Sepulveda Blvd., Ste. 600 · Sherman Oaks, CA 91411 · 818.501.2212/Phone · 818.501.2202/Fax · www.illicre.com · DRE #01834124



7912-7918

Melrose Avenue

AREA AMENITIES

- Quiet office suit in vibrant retail and office building
- Rare opportunity to lease small office space in thriving Melrose shopping district
- High foot traffic
- Located on the famous corner of Melrose and Fairfax



NORTH FAIRFAX AVENUE

MELROSE AVENUE

CRESCENT HEIGHTS

Beth Eluzer Kahal Jtzchok Synagogue

Rachel Adams (818) 697-9375 , rachel@illicre.com, DRE# 02052879
 Ethan Grabel (818) 697-9373 , ethan@illicre.com, DRE# 02082469

Please visit us at:

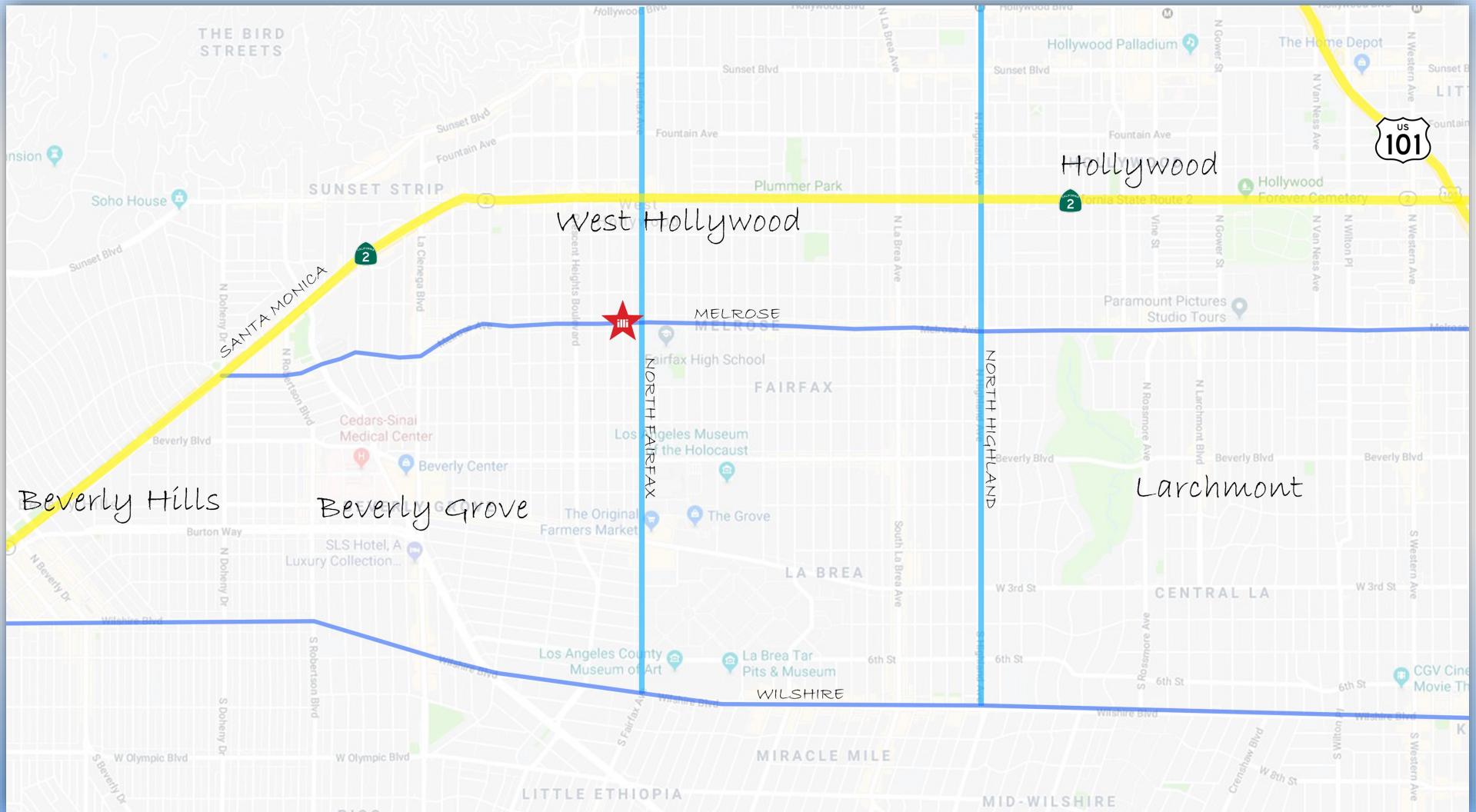


This information has been secured from sources we believe to be reliable, but we make no representations or warranties, expressed or implied, as to the accuracy of the information. References to square footage are approximate. References to neighboring retailers are subject to change, and may not be adjacent to the vacancy being marketed either prior to, during, or after leases are signed. Lessee must verify the information and bears all risk for any inaccuracies.

5990 Sepulveda Blvd., Ste. 600 · Sherman Oaks, CA 91411 · 818.501.2212/Phone · 818.501.2202/Fax · www.illicre.com · DRE #01834124



7912-7918 Melrose Avenue



Rachel Adams (818) 697-9375 , rachel@illicre.com, DRE# 02052879

Ethan Grabel (818) 697-9373 , ethan@illicre.com, DRE# 02082469

Please visit us at:



This information has been secured from sources we believe to be reliable, but we make no representations or warranties, expressed or implied, as to the accuracy of the information. References to square footage are approximate. References to neighboring retailers are subject to change, and may not be adjacent to the vacancy being marketed either prior to, during, or after leases are signed. Lessee must verify the information and bears all risk for any inaccuracies.

5990 Sepulveda Blvd., Ste. 600 · Sherman Oaks, CA 91411 · 818.501.2212/Phone · 818.501.2202/Fax · www.illicre.com · DRE #01834124

