

FOR LEASE

4700 SW 25TH CIR, OKLAHOMA CITY, OK 73108



HORIZON
COMMERCIAL REAL ESTATE

David Portman, CCIM
Principal

405.850.1107
Horizoncreek.com



PROPERTY INFORMATION

\$7.50/psf + NNN

PROPERTY TYPE	INDUSTRIAL
SPACE SIZE	30,000
CLEAR HEIGHT	28'
ZONING	I-2
YEAR BUILT	2020



INDUSTRIAL SPACE AVAILABLE FOR LEASE!



480 V 3 PHASE WITH 400 AMPS OF POWER



FEATURES 10 DOCK DOORS & 2 DRIVE-IN RAMPS (12'X14')



INCLUDES 1,821 SF OF OFFICE WITH A RECEPTION AREA



165' SECURED TRUCK COURT WITH FENCING AND GATED ACCESS



VERSATILE SPACE IDEAL FOR MANUFACTURING, DISTRIBUTION, OR STORAGE NEEDS



CONVENIENT ACCESS TO INTERSTATES I-40 & I-44

ALTHOUGH THE INFORMATION HAS BEEN OBTAINED FROM TRUSTWORTHY SOURCES, HORIZON CRE MAKES NO GUARANTEES, ASSURANCES, OR WARRANTIES ABOUT THE COMPLETENESS OR ACCURACY OF THE DATA. THIS PROPERTY IS BEING PRESENTED WITH THE POSSIBILITY OF ERRORS AND OMISSIONS. MODIFICATIONS MAY OCCUR THAT ALTER THE FACTS OF THIS PRESENTATION WITHOUT NOTICE.

HORIZON
COMMERCIAL REAL ESTATE

David Portman, CCIM
Principal

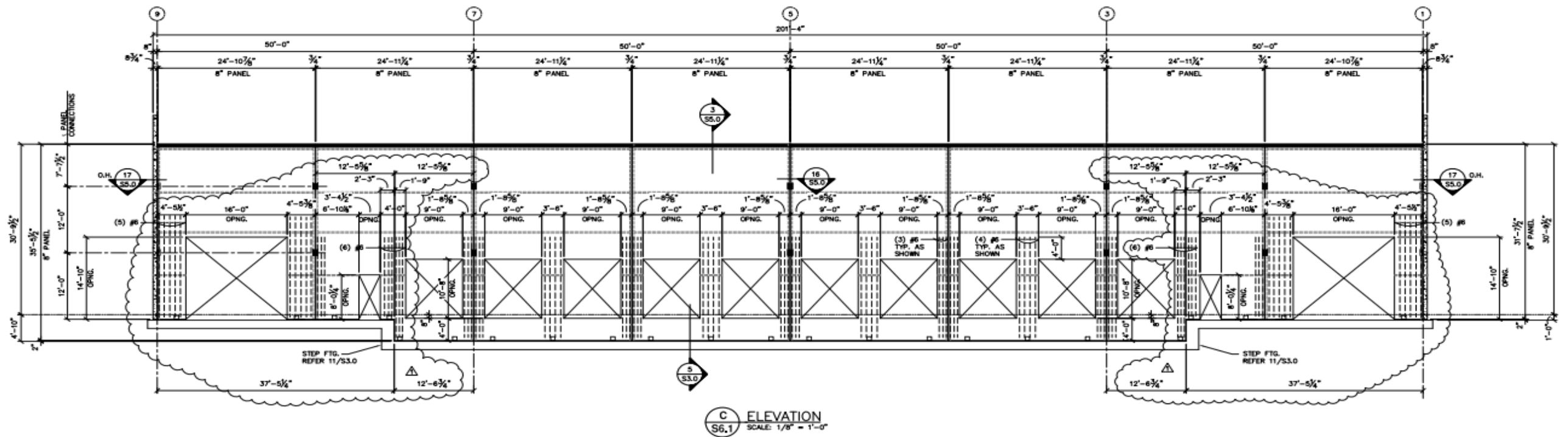
405.850.1107
Horizoncreek.com



HORIZON
COMMERCIAL REAL ESTATE

David Portman, CCIM
Principal

405.850.1107
Horizoncreek.com

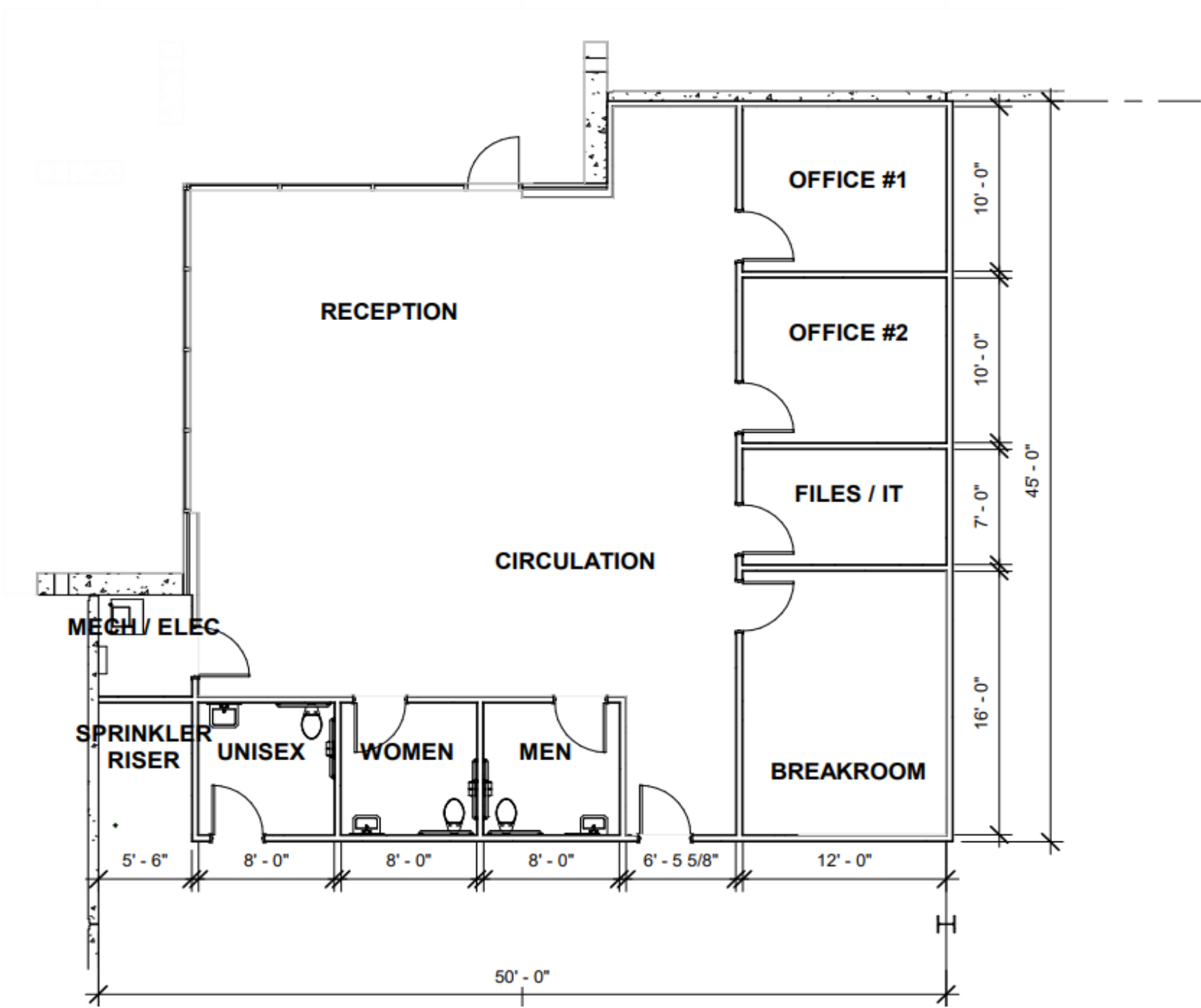


HORIZON
COMMERCIAL REAL ESTATE

David Portman, CCIM
Principal

405.850.1107
Horizoncreek.com

4700 SW 25th Cir, Oklahoma City, OK 73108



Room Schedule	
Name	Area
RECEPTION	682 SF
OFFICE #1	120 SF
OFFICE #2	120 SF
FILES / IT	84 SF
BREAKROOM	192 SF
UNISEX	64 SF
WOMEN	64 SF
MEN	64 SF
MECH / ELEC	34 SF
CIRCULATION	397 SF
1821 SF	

4700 SW 25th Cir, Oklahoma City, OK 73108

