



**ALEXANDRIAN
PARTNERS**
COMMERCIAL REAL ESTATE

1208 PEMBERTON DR, SALISBURY, MD 21801



- EXISTING 3,000 SQFT
- ABILITY TO EXPAND THE BUILDING BY AN ADDITIONAL 2,680 SF
- OPPORTUNITY TO PURCHASE A FULLY BUILT-OUT PEDIATRIC OFFICE
- 6 EXAM ROOM LAYOUT FUNCTIONS FOR MOST MEDICAL SPECIALTIES
- STAND-ALONE BUILDING WITH PARKING AND SIGNAGE
- FUTURE EXPANSION PLANS COME WITH PURCHASE

MEDICAL OFFICE FOR SALE



**ANTONIS ALEXANDRIS
PRINCIPAL BROKER**

240-997-6199

ANTONIS@ALEXANDRIANPARTNERS.COM

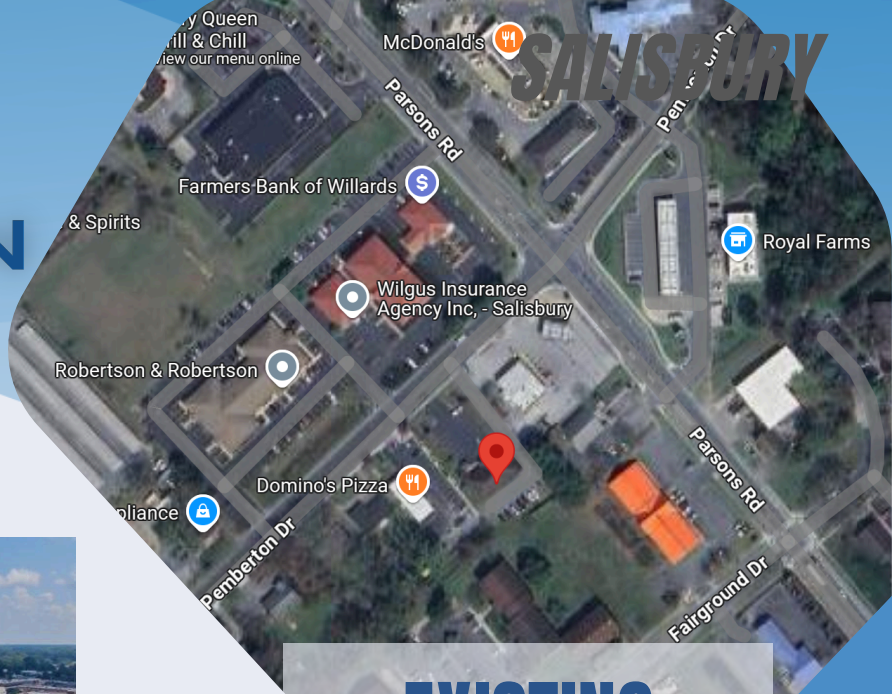


**SMART DEALS.
PRIME LOCATIONS.
PROFITABLE PRACTICES.**

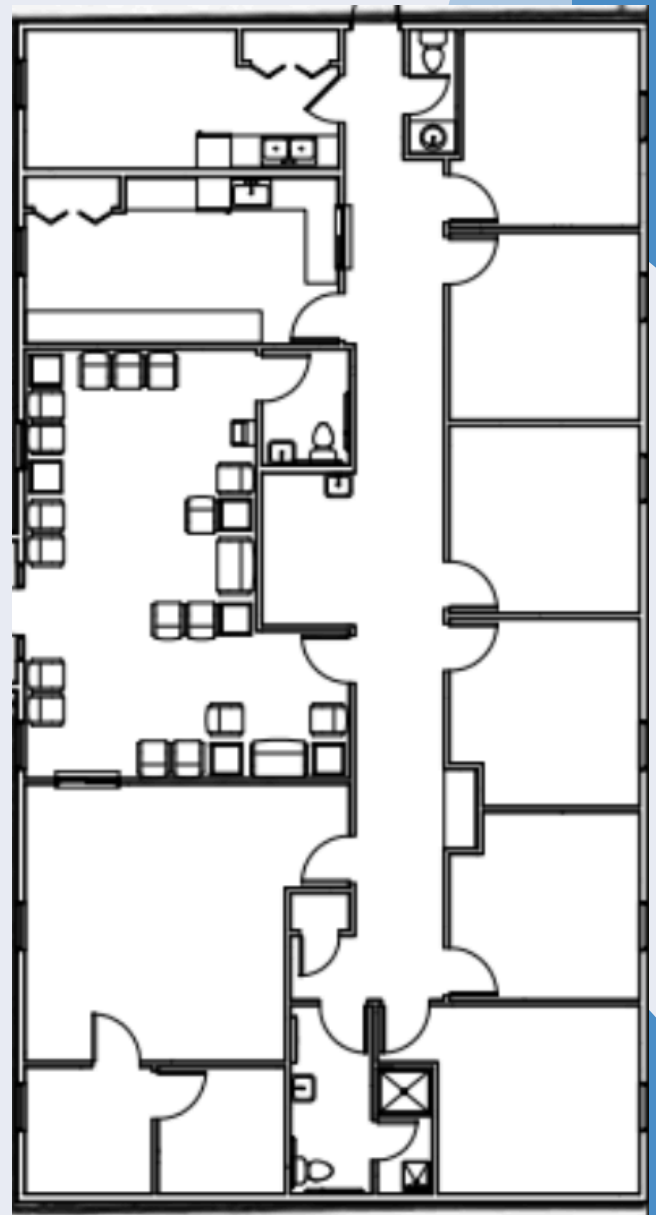
WWW.ALEXANDRIANPARTNERS.COM



ALEXANDRIAN PARTNERS COMMERCIAL REAL ESTATE



EXISTING FLOOR PLAN



STRATEGICALLY LOCATED



**SMART DEALS.
PRIME LOCATIONS.
PROFITABLE PRACTICES.**

WWW.ALEXANDRIANPARTNERS.COM