

FOR LEASE
FREESTANDING INDUSTRIAL BUILDING WITH YARD
±15,000 Square Feet (Plus ±4,000 Square Foot Bonus Mezzanine)
With ±1 Acre Fenced/Paved Yard Space & High Ceilings



3870 Charter Park Drive, San Jose, CA.

- ±1 Acre Fenced/Paved Yard Including Parking
- ±4,000 Square Foot Bonus Mezzanine
- High Ceilings: ±23' Clear Height
- Heavy Power: 800 Amps | 480/277 Volt | 3 Phase Power
- 4 Grade Level Truck Doors: ±15' x 13'
- ±25% Office
- Fire Sprinklers
- Skylights
- Highway 87 Proximity & Access
- Zoning: Industrial Park Base District
- Available Now!
- \$1.80/SF, Industrial Gross

Please Contact Exclusive Agent:

BRIAN COSTELLO, Senior Vice President
bcostello@ritchiecommercial.com
1 408.316.7447 DRE #01914680

RITCHIE **Commercial**
RESPONSIBLE REAL ESTATE

34 WEST SANTA CLARA STREET, SAN JOSE, CA. 95113
408.971.2700 fax: 408.971.1600
DRE #01209214 | www.ritchiecommercial.com

The information contained herein has been obtained from sources we deem reliable.
We cannot, however assume responsibility for its accuracy.

San Francisco | San Jose | Santa Cruz

FOR LEASE
FREESTANDING INDUSTRIAL BUILDING WITH YARD
±15,000 Square Feet (Plus ±4,000 Square Foot Bonus Mezzanine)
With ±1 Acre Fenced/Paved Yard Space & High Ceilings



3870 Charter Park Drive
San Jose, CA.



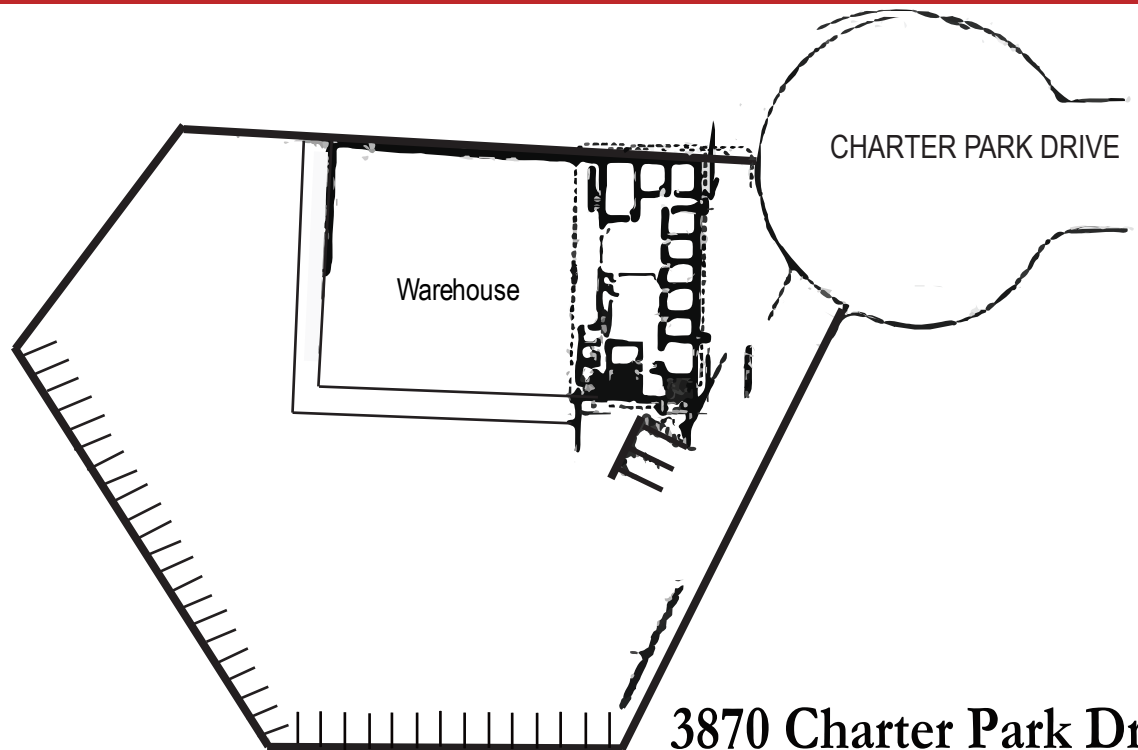
RITCHIE *Commercial*
RESPONSIBLE REAL ESTATE

The information contained herein has been obtained from sources we deem reliable.
We cannot, however assume responsibility for its accuracy.

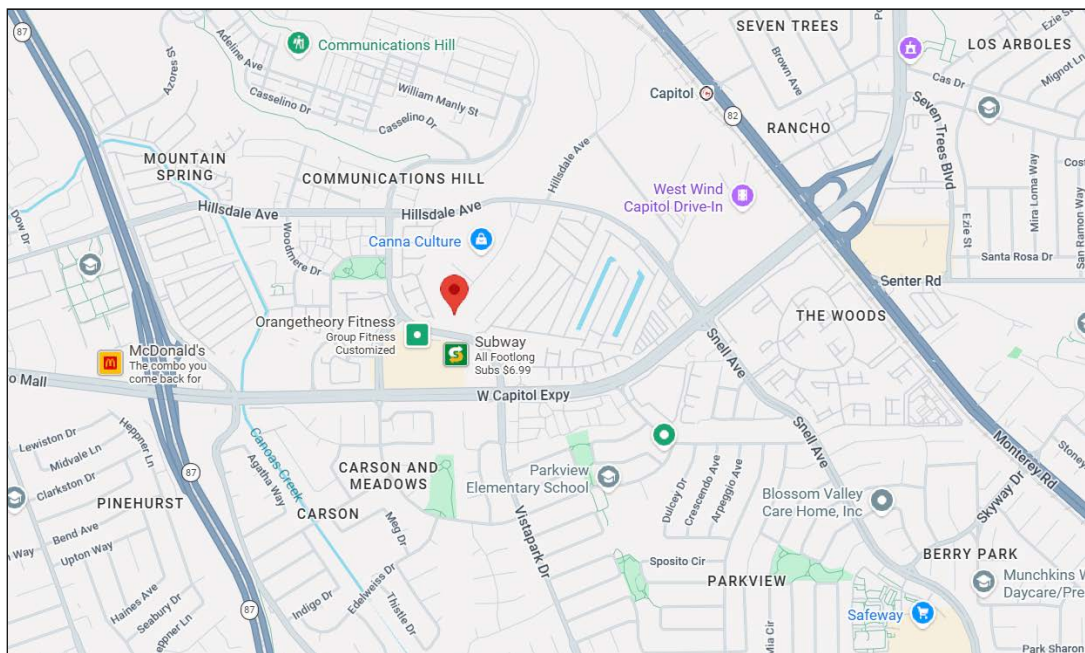
Please Contact Exclusive Agent:

BRIAN COSTELLO, Senior Vice President
bcostello@ritchiecommercial.com
1 408.316.7447 DRE #01914680

FOR LEASE
FREESTANDING INDUSTRIAL BUILDING WITH YARD
±15,000 Square Feet (Plus ±4,000 Square Foot Bonus Mezzanine)
With ±1 Acre Fenced/Paved Yard Space & High Ceilings



**3870 Charter Park Drive
San Jose, CA.**



RITCHIE *Commercial*
RESPONSIBLE REAL ESTATE

The information contained herein has been obtained from sources we deem reliable.
We cannot, however assume responsibility for its accuracy.

Please Contact Exclusive Agent:

BRIAN COSTELLO, Senior Vice President
bcostello@ritchiecommercial.com
1 408.316.7447 DRE #01914680