

*Waynesboro PA
150 Acre Proposed Business Park
B2M2-- 42 Acres*

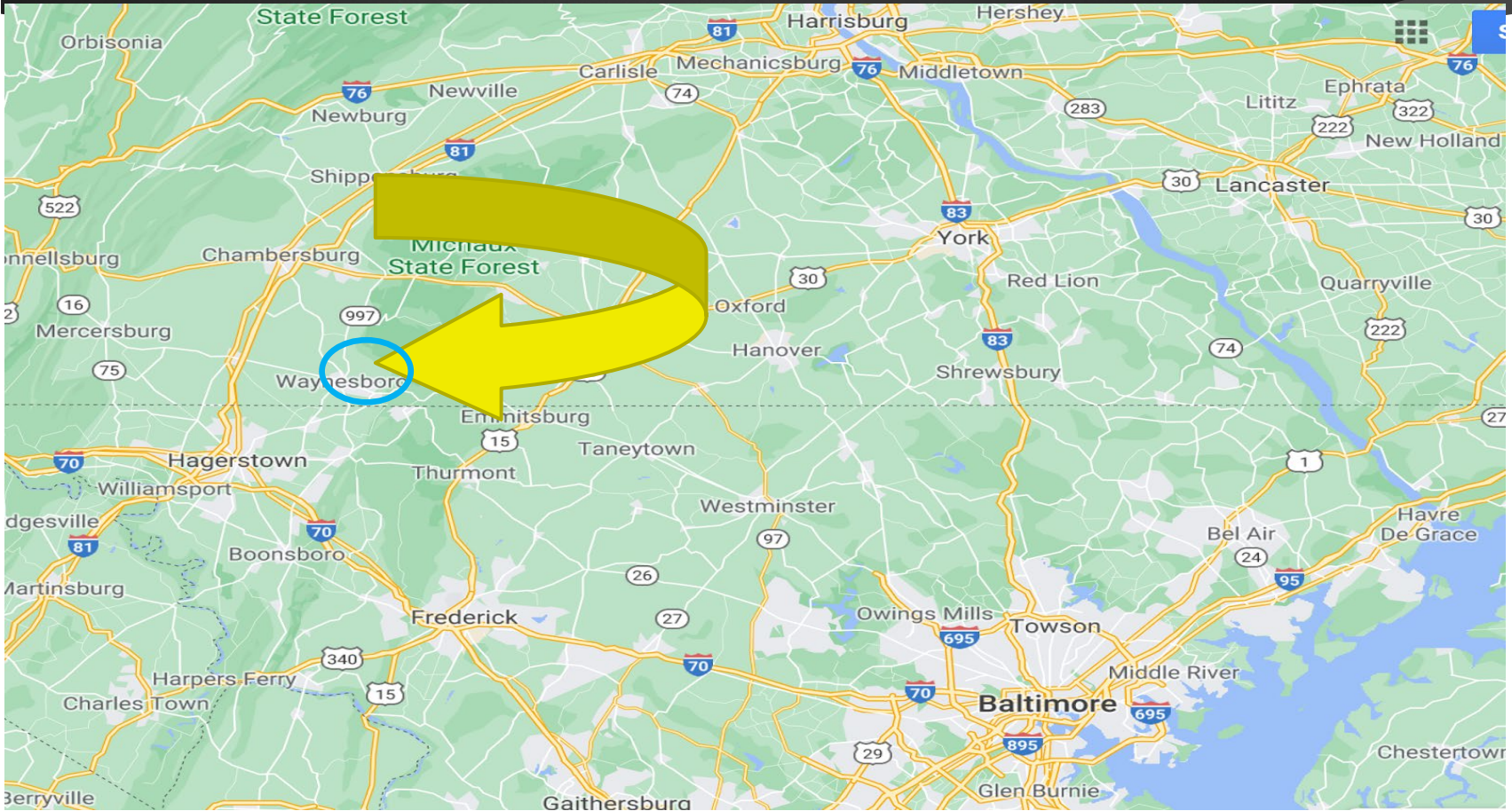


THE
PINEAPPLE
GROUP

Presented by
JIM NICKLAS
717.860.0794

jim@thepineapplegroup.com

PA Rt 997_Tomstown Rd | Waynesboro, PA



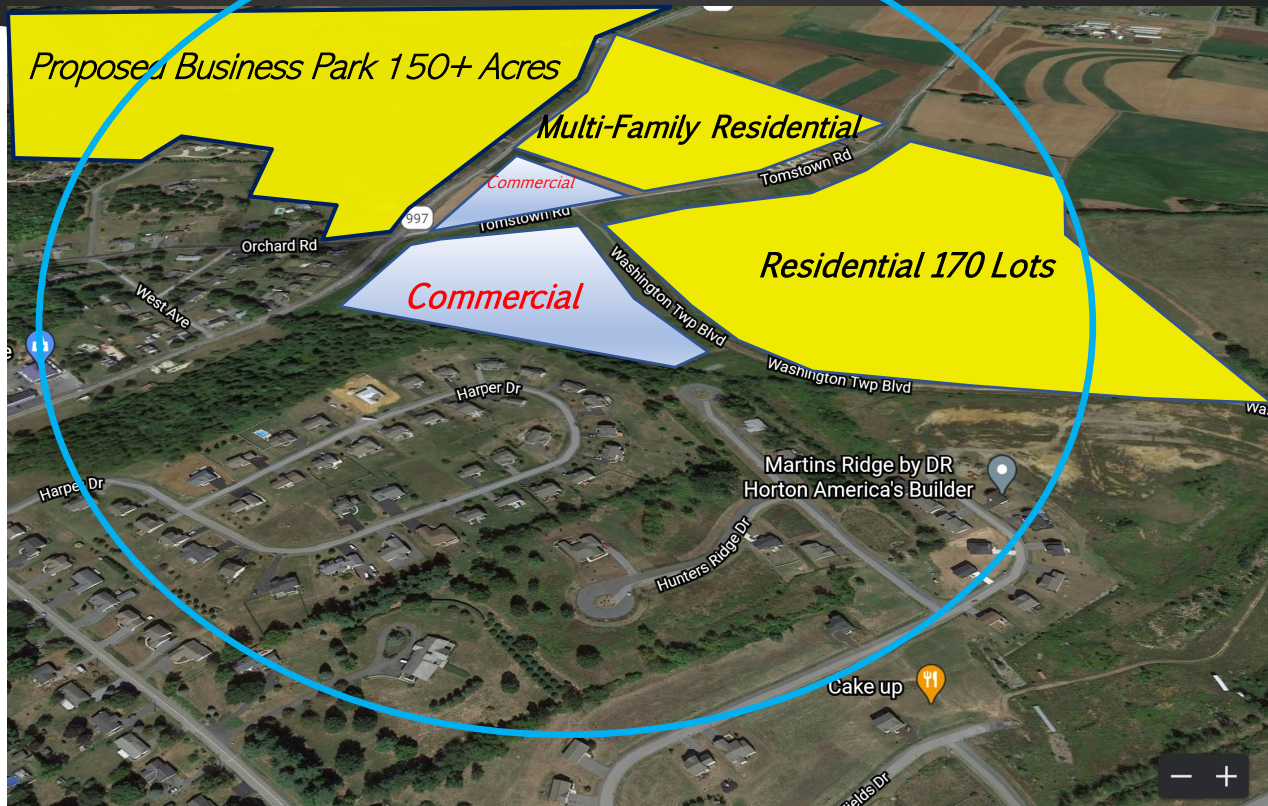
Rt 997 & Tomstown Rd | Waynesboro, PA



North End High Lights

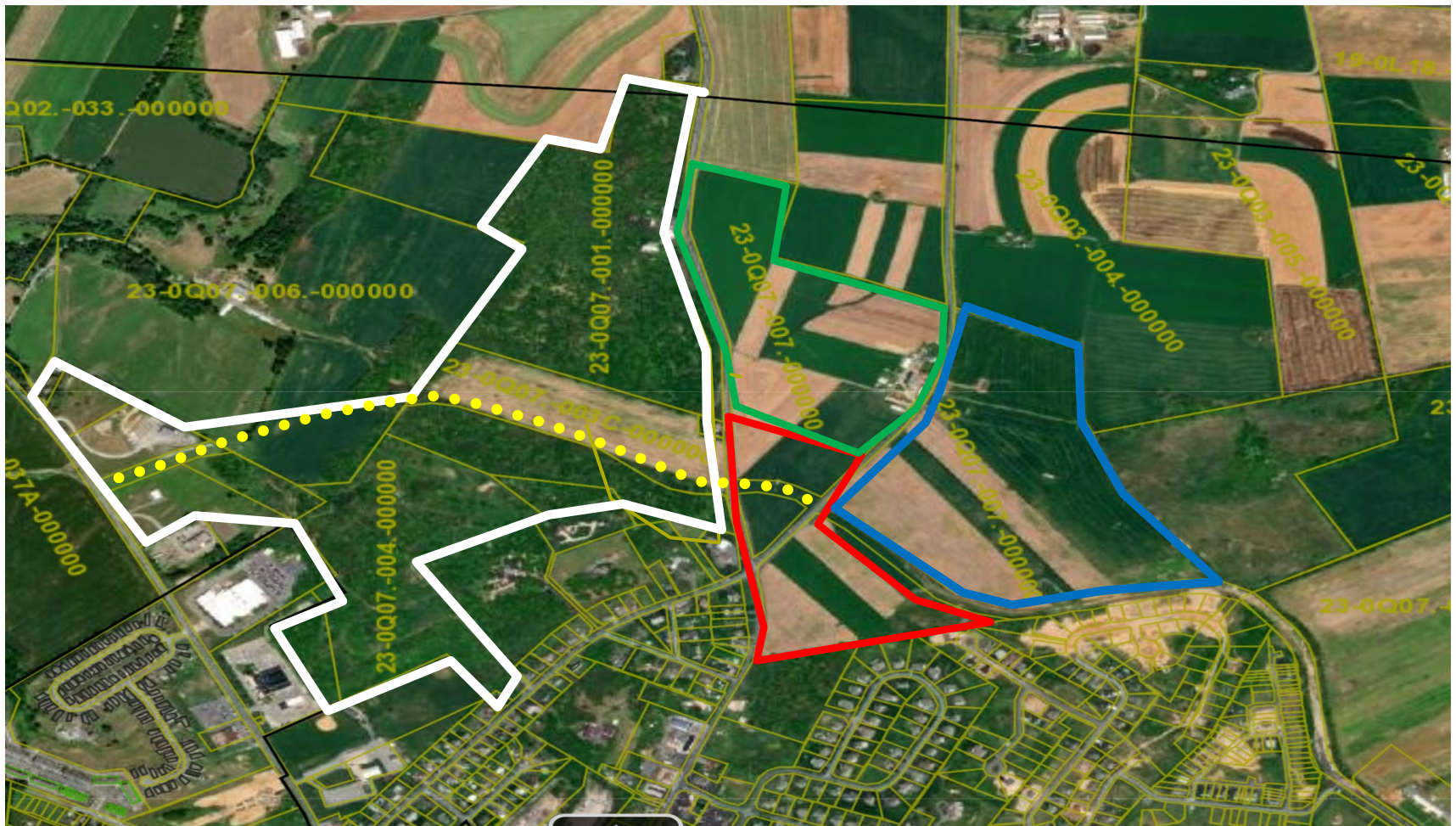
- **North Waynesboro Growth Rate past years 15%**
- **170 Single Family Home Sites Under Contract**
- **60 Unit Apartment Complex Under Contract**
- **Penn DOT 2 Roundabouts scheduled for construction 2022**
- **150 Acres recently Rezone to Industrial—Proposed Business Park**
- **Washington Township & Franklin County Growth Planning Area**
- **Available- 150 Acres Industrial -- Zoned I**

PA Rt 997_Tomstown Rd_Orchard Rd Proposed Business park



All depictions are estimations and for illustration purposes only.

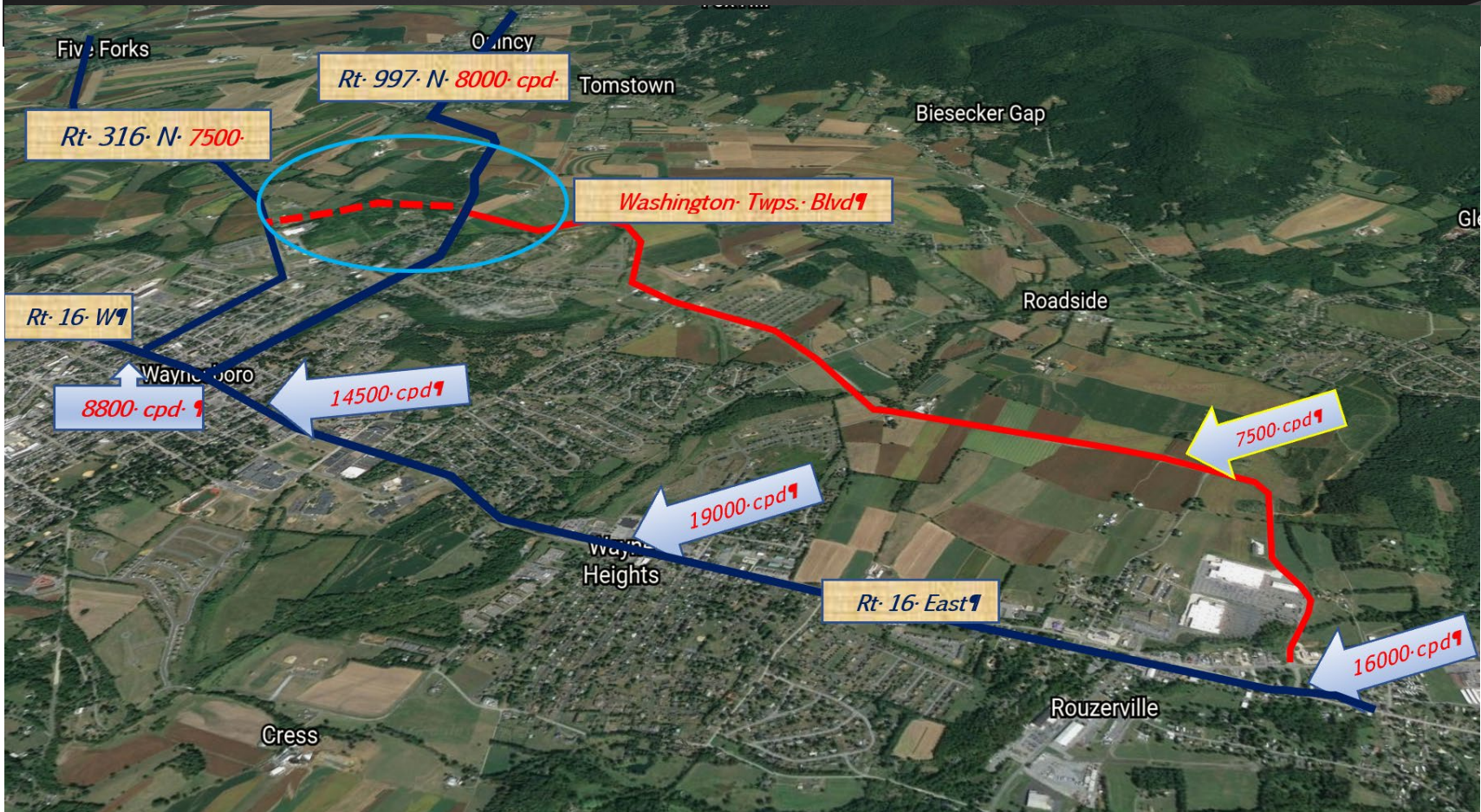
R1 Residential, R2 Multi-Family, C Commercial, I Industrial



Industrial Park _____ **B2M2 42 Acs**



Traffic 2020





THE
PINEAPPLE
GROUP

JIM NICKLAS | *Realtor*

717.860.0794 cell | text

jim@thepineapplegroup.co

Laura N. Sponseller | Broker

5 N. Second St. Chambersburg, PA 17201

717.446.0043 | www.thepineapplegroup.com

