

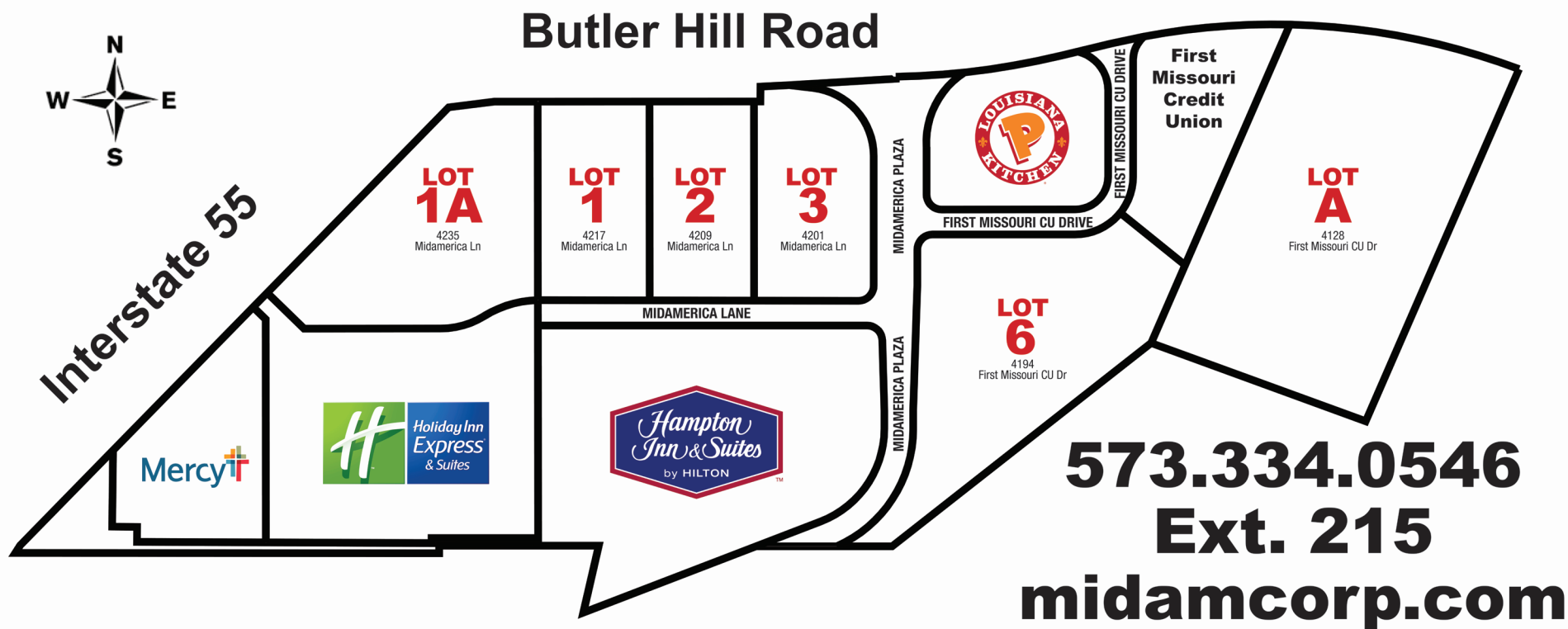
LOTS AVAILABLE

St. Louis, Missouri: I-55 & Butler Hill Road

Several commercial development sites are available with excellent visibility from I-55, frontage along I-55 and Butler Hill Road, and a signalized access from Butler Hill Road onto Midamerica Plaza. Located on the Southeast quadrant of Interstate 55 and Butler Hill Road in St. Louis County, this development includes such occupants and neighbors as Siteman Cancer Center-South County Campus, an award winning Hampton Inn & Suites, a recently opened Popeyes Louisiana Kitchen, Mercy Hospital and First Missouri Credit Union.



Midamerica Hotels Corporation | 105 S Mount Auburn Road, Cape Girardeau, MO 63703 | 573.334.0546 | www.midamcorp.com | CONTACT: diane.drury@midamcorp.com

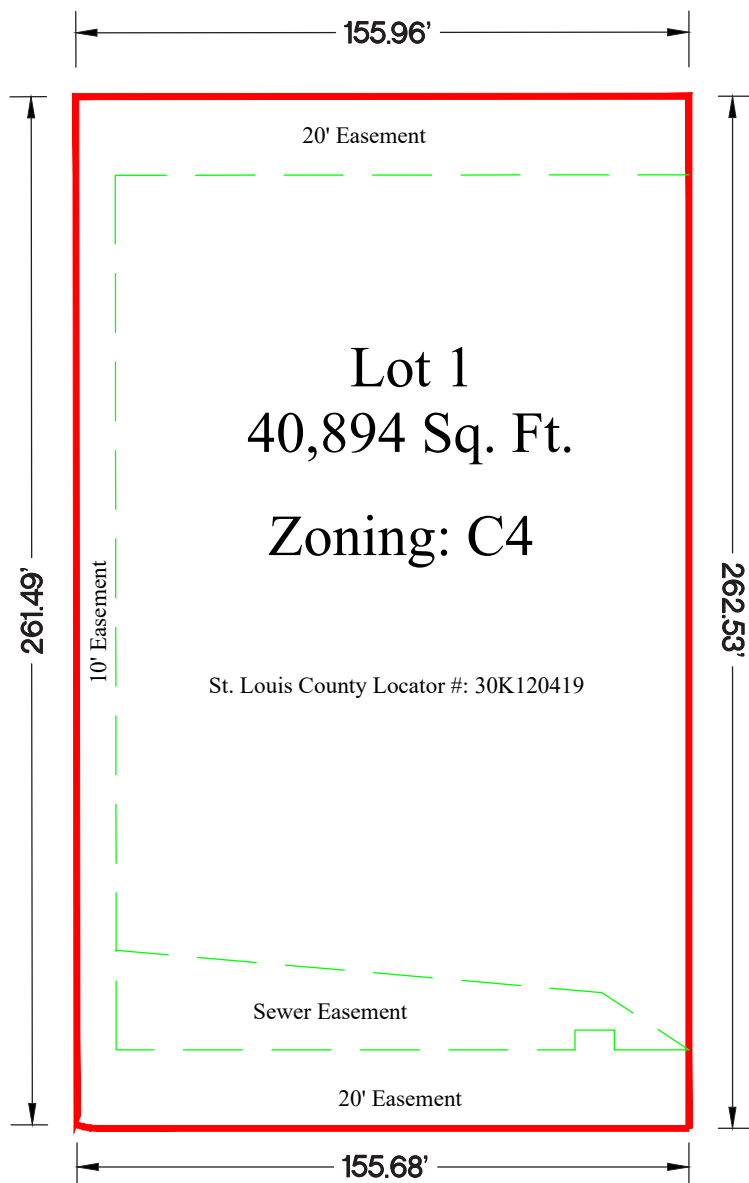


LOTS AVAILABLE

St. Louis, Missouri: I-55 & Butler Hill Road

Several commercial development sites are available with excellent visibility from I-55, frontage along I-55 and Butler Hill Road, and a signalized access from Butler Hill Road onto Midamerica Plaza. Located on the Southeast quadrant of Interstate 55 and Butler Hill Road in St. Louis County, this development includes such occupants and neighbors as Siteman Cancer Center-South County Campus, an award winning Hampton Inn & Suites, a recently opened Popeyes Louisiana Kitchen, Mercy Hospital and First Missouri Credit Union.





Lot 1

(4217 Midamerica Lane)
40,894 Sq. Ft.
Zoning: C4

Utilities

Electric: Ameren Missouri
Gas: Laclede Gas
Sewer and Storm Water: MSD
Water: Missouri-American Water Company

City Services

Fire Protection: Mehlville Fire Protection District
School District: Mehlville R-9
Police: St. Louis County 4th Precinct (South County Precinct)

Traffic Count

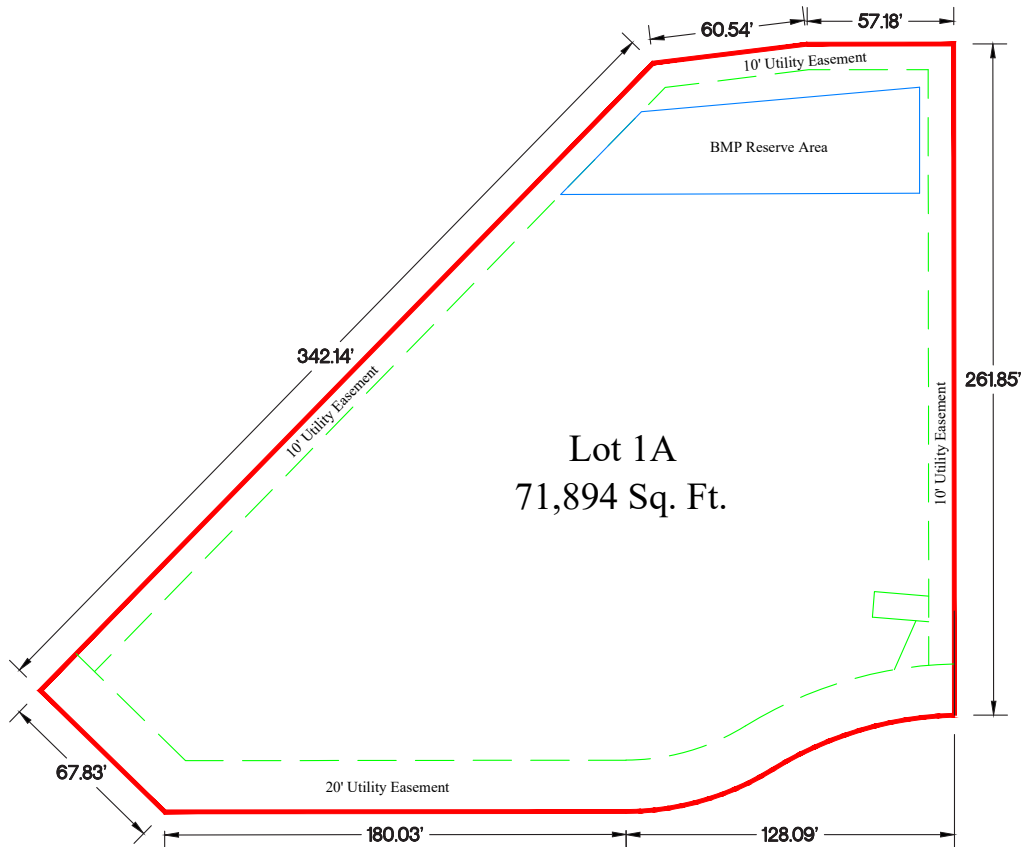
I-55 near Butler Hill Road: 126,440 (2013)
Butler Hill Road (East of I-55): 26,580 (2007)



St. Louis, Missouri: I-55 & Butler Hill Road

Several commercial development sites are available with excellent visibility from I-55, frontage along I-55 and Butler Hill Road, and a signalized access from Butler Hill Road onto Midamerica Plaza. Located on the Southeast quadrant of Interstate 55 and Butler Hill Road in St. Louis County, this development includes such occupants and neighbors as Siteman Cancer Center-South County Campus, an award winning Hampton Inn & Suites, a recently opened Popeyes Louisiana Kitchen, Mercy Hospital and First Missouri Credit Union.





Lot 1A - Excellent Restaurant Site

(4235 Midamerica Lane)

71,894 Sq. Ft.

Zoning: C8

Utilities

Electric: Ameren Missouri

Gas: Laclede Gas

Sewer and Storm Water: MSD

Water: Missouri-American Water Company

City Services

Fire Protection: Mehlville Fire Protection District

School District: Mehlville R-9

Police: St. Louis County 4th Precinct (South County Precinct)

Traffic Count

I-55 near Butler Hill Road: 126,440 (2013)

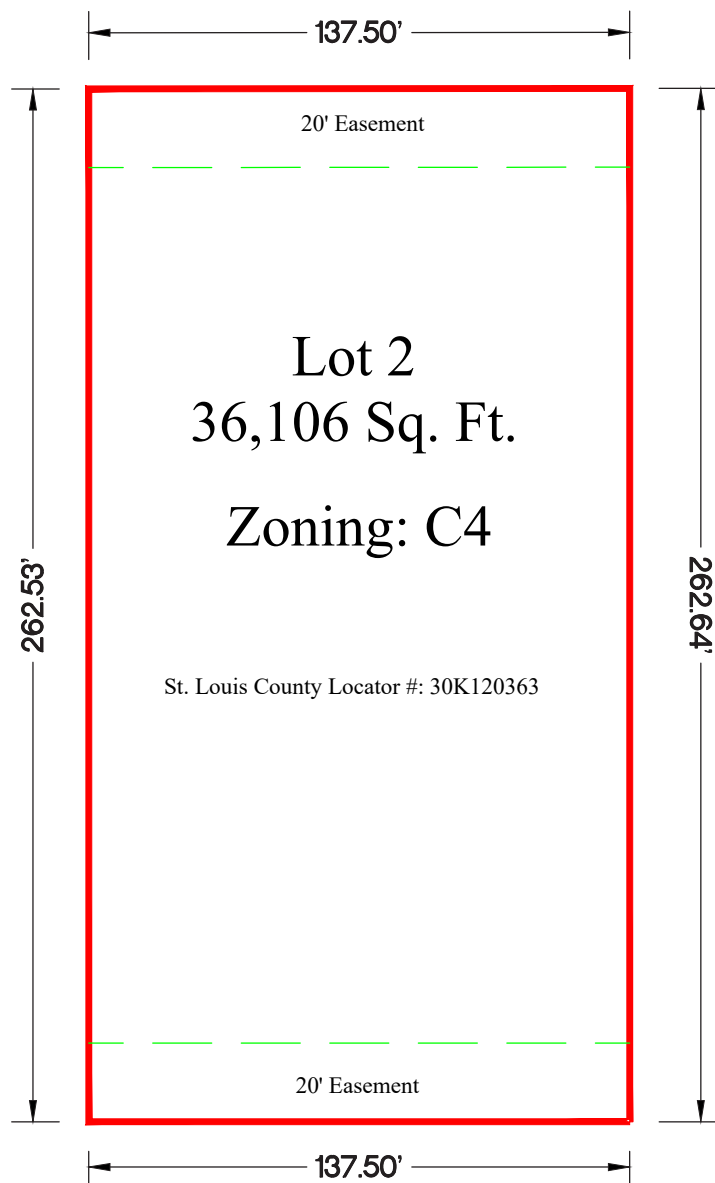
Butler Hill Road (East of I-55): 26,580 (2007)



St. Louis, Missouri: I-55 & Butler Hill Road

Several commercial development sites are available with excellent visibility from I-55, frontage along I-55 and Butler Hill Road, and a signalized access from Butler Hill Road onto Midamerica Plaza. Located on the Southeast quadrant of Interstate 55 and Butler Hill Road in St. Louis County, this development includes such occupants and neighbors as Siteman Cancer Center-South County Campus, an award winning Hampton Inn & Suites, a recently opened Popeyes Louisiana Kitchen, Mercy Hospital and First Missouri Credit Union.





Lot 2

(4209 Midamerica Lane)

36,106 Sq. Ft.

Zoning: C4

Utilities

Electric: Ameren Missouri

Gas: Laclede Gas

Sewer and Storm Water: MSD

Water: Missouri-American Water Company

City Services

Fire Protection: Mehlville Fire Protection District

School District: Mehlville R-9

Police: St. Louis County 4th Precinct (South County Precinct)

Traffic Count

I-55 near Butler Hill Road: 126,440 (2013)

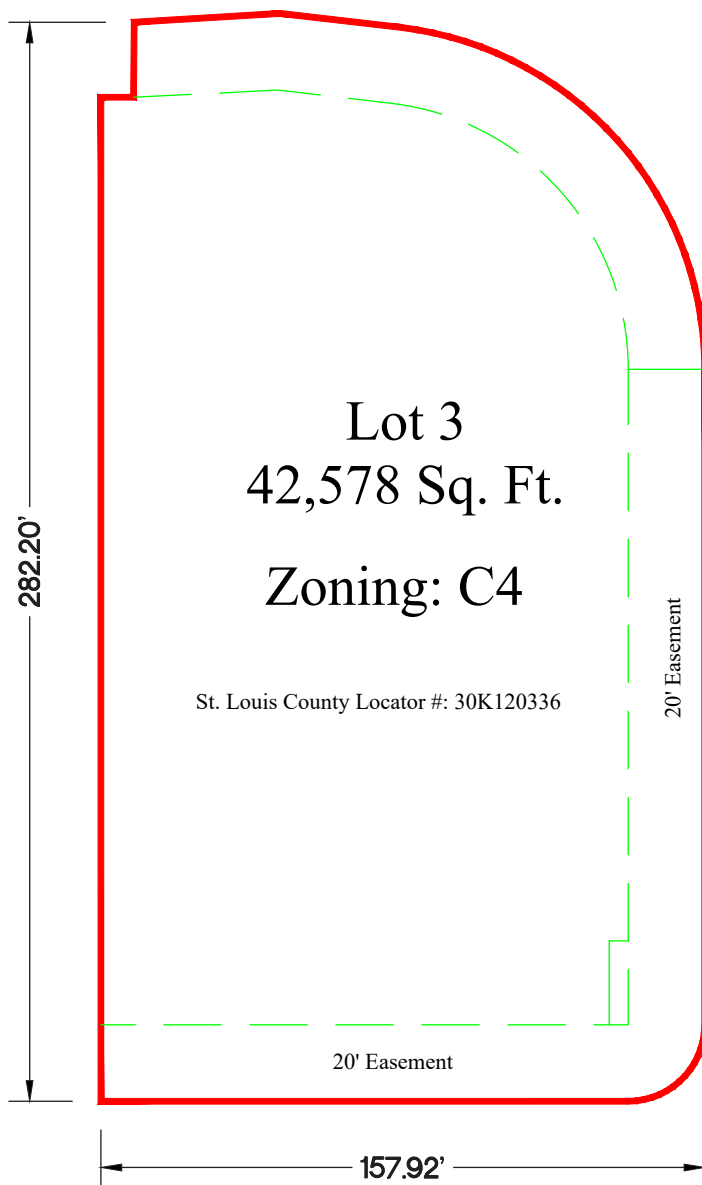
Butler Hill Road (East of I-55): 26,580 (2007)



St. Louis, Missouri: I-55 & Butler Hill Road

Several commercial development sites are available with excellent visibility from I-55, frontage along I-55 and Butler Hill Road, and a signalized access from Butler Hill Road onto Midamerica Plaza. Located on the Southeast quadrant of Interstate 55 and Butler Hill Road in St. Louis County, this development includes such occupants and neighbors as Siteman Cancer Center-South County Campus, an award winning Hampton Inn & Suites, a recently opened Popeyes Louisiana Kitchen, Mercy Hospital and First Missouri Credit Union.





Lot 3

(4201 Midamerica Lane)
42,578 Sq. Ft.
Zoning: C4

Utilities

Electric: Ameren Missouri
Gas: Laclede Gas
Sewer and Storm Water: MSD
Water: Missouri-American Water Company

City Services

Fire Protection: Mehlville Fire Protection District
School District: Mehlville R-9
Police: St. Louis County 4th Precinct (South County Precinct)

Traffic Count

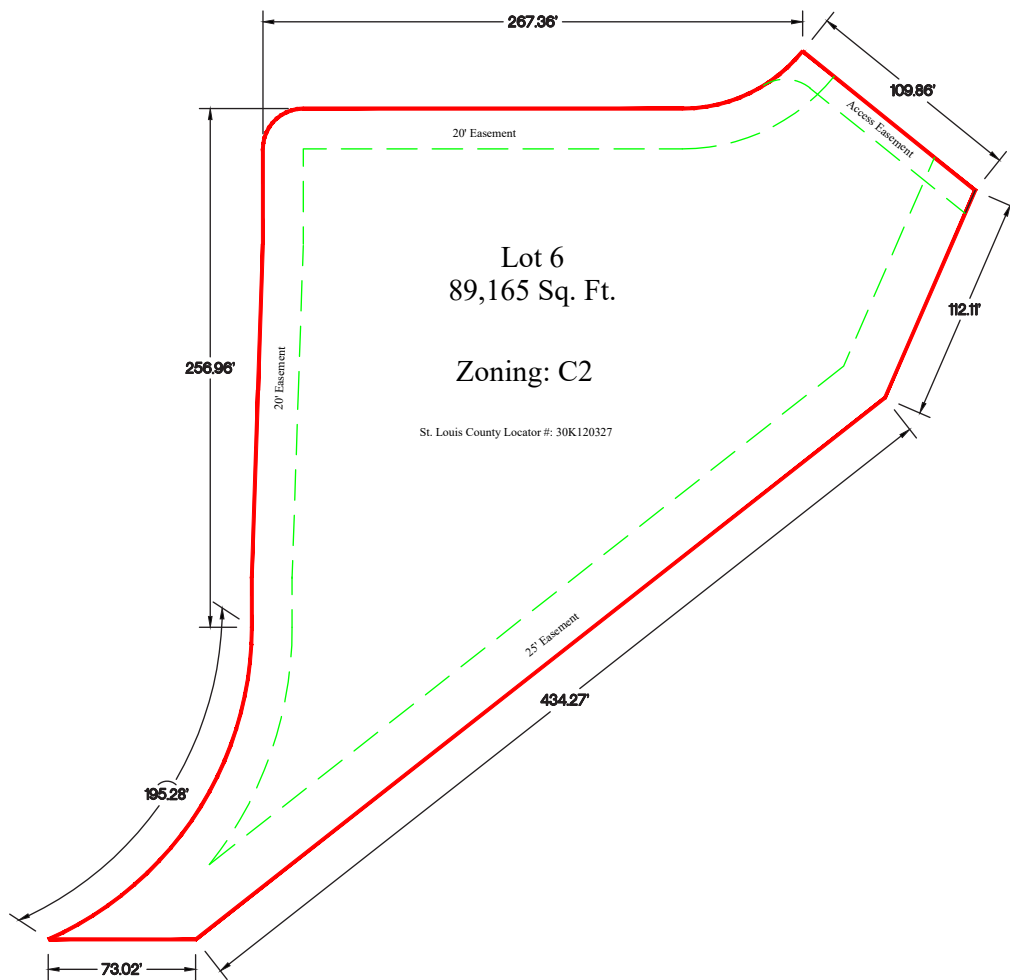
I-55 near Butler Hill Road: 126,440 (2013)
Butler Hill Road (East of I-55): 26,580 (2007)



St. Louis, Missouri: I-55 & Butler Hill Road

Several commercial development sites are available with excellent visibility from I-55, frontage along I-55 and Butler Hill Road, and a signalized access from Butler Hill Road onto Midamerica Plaza. Located on the Southeast quadrant of Interstate 55 and Butler Hill Road in St. Louis County, this development includes such occupants and neighbors as Siteman Cancer Center-South County Campus, an award winning Hampton Inn & Suites, a recently opened Popeyes Louisiana Kitchen, Mercy Hospital and First Missouri Credit Union.





Lot 6

(4194 First Missouri CU Drive)
89,165 Sq. Ft.
Zoning: C2

Utilities

Electric: Ameren Missouri
Gas: Laclede Gas
Sewer and Storm Water: MSD
Water: Missouri-American Water Company

City Services

Fire Protection: Mehlville Fire Protection District
School District: Mehlville R-9
Police: St. Louis County 4th Precinct (South County Precinct)

Traffic Count

I-55 near Butler Hill Road: 126,440 (2013)
Butler Hill Road (East of I-55): 26,580 (2007)



St. Louis, Missouri: I-55 & Butler Hill Road

Several commercial development sites are available with excellent visibility from I-55, frontage along I-55 and Butler Hill Road, and a signalized access from Butler Hill Road onto Midamerica Plaza. Located on the Southeast quadrant of Interstate 55 and Butler Hill Road in St. Louis County, this development includes such occupants and neighbors as Siteman Cancer Center-South County Campus, an award winning Hampton Inn & Suites, a recently opened Popeyes Louisiana Kitchen, Mercy Hospital and First Missouri Credit Union.





Lot A

(4128 First Missouri CU Drive)
147,590 Sq. Ft.
Zoning: C2

Utilities

Electric: Ameren Missouri
Gas: Laclede Gas
Sewer and Storm Water: MSD
Water: Missouri-American Water Company

City Services

Fire Protection: Mehlville Fire Protection District
School District: Mehlville R-9
Police: St. Louis County 4th Precinct (South County Precinct)

Traffic Count

I-55 near Butler Hill Road: 126,440 (2013)
Butler Hill Road (East of I-55): 26,580 (2007)



St. Louis, Missouri: I-55 & Butler Hill Road

Several commercial development sites are available with excellent visibility from I-55, frontage along I-55 and Butler Hill Road, and a signalized access from Butler Hill Road onto Midamerica Plaza. Located on the Southeast quadrant of Interstate 55 and Butler Hill Road in St. Louis County, this development includes such occupants and neighbors as Siteman Cancer Center-South County Campus, an award winning Hampton Inn & Suites, a recently opened Popeyes Louisiana Kitchen, Mercy Hospital and First Missouri Credit Union.

