

FOR SALE JUNEAU WI - LAND 3.15 ACRES



Juneau Lots

408 E Center St / S. Depot St / E Oak St
Juneau, Wisconsin 53039

Property Highlights

- Commercial
- Multi Family

Property Description

Three adjacent lots totaling 3.15 acres with commercial or multi family zoning

OFFERING SUMMARY

Sale Price	\$249,000
Lot Size	3.15 Acres

DEMOGRAPHICS

Stats	Population	Avg. HH Income
1 Mile	293	\$57,731
5 Miles	7,039	\$59,337
10 Miles	30,085	\$60,512

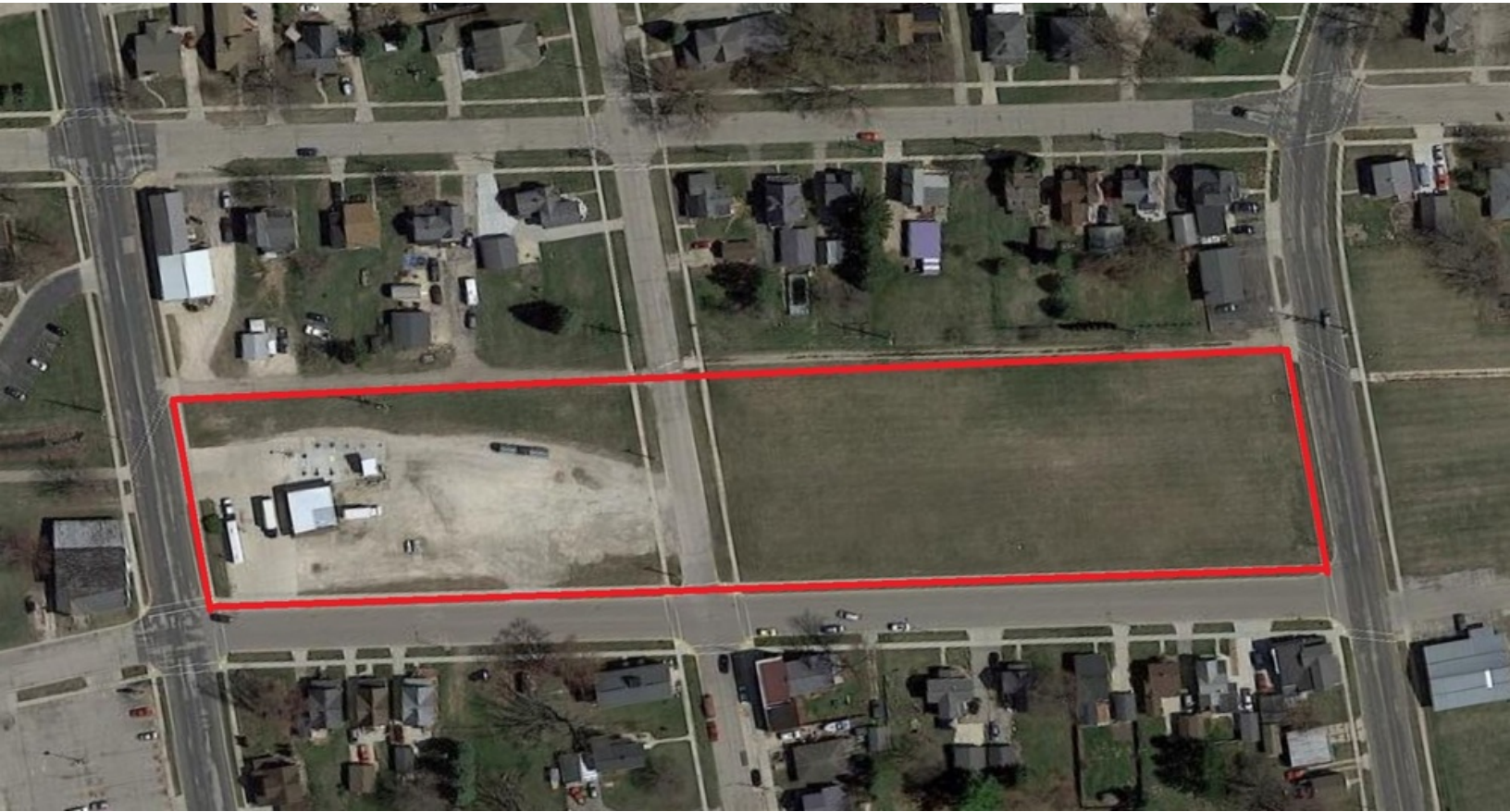
For more information

Steve Turner

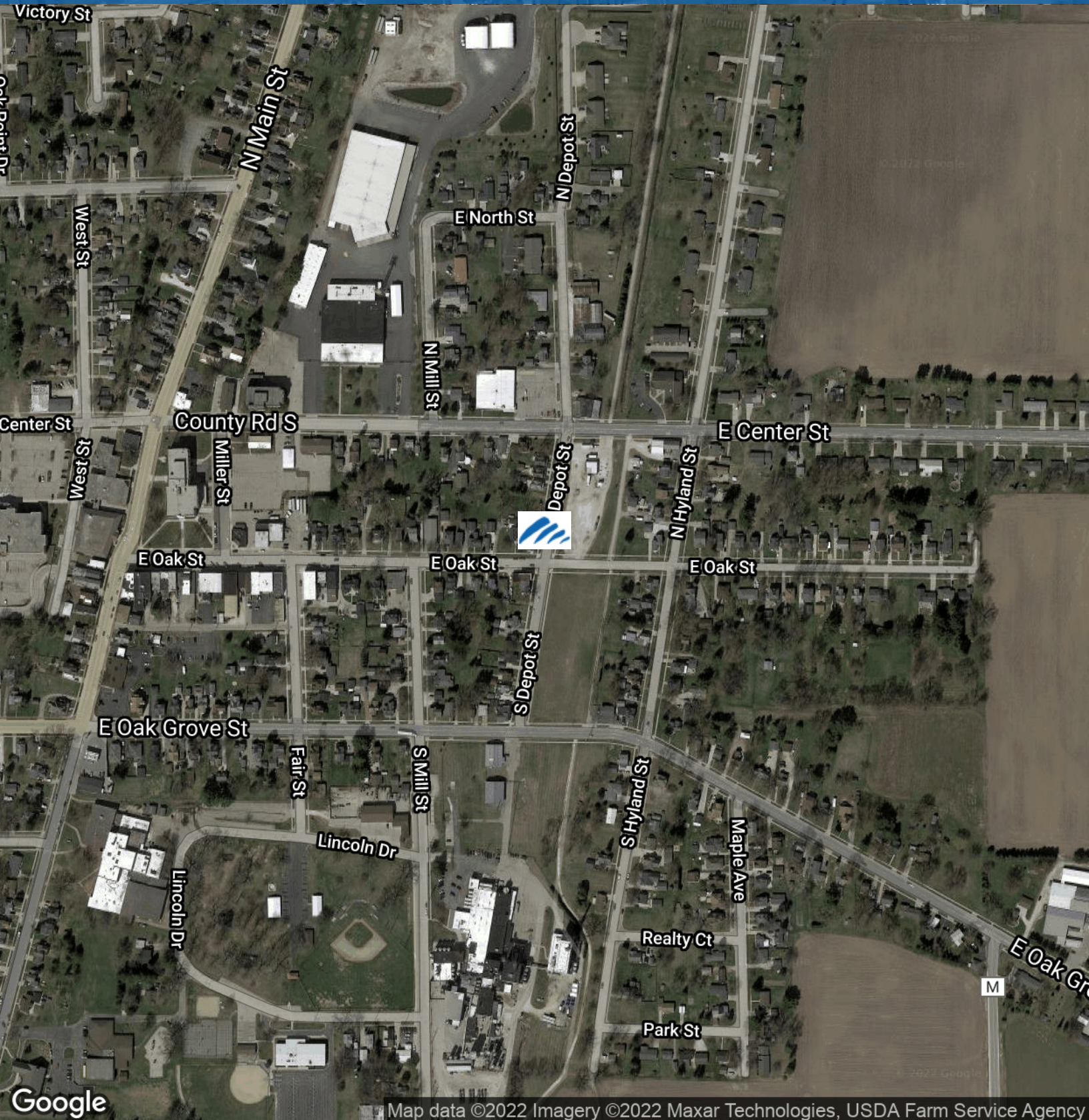
O: 608 338 4410

steve.turner@greywp.com

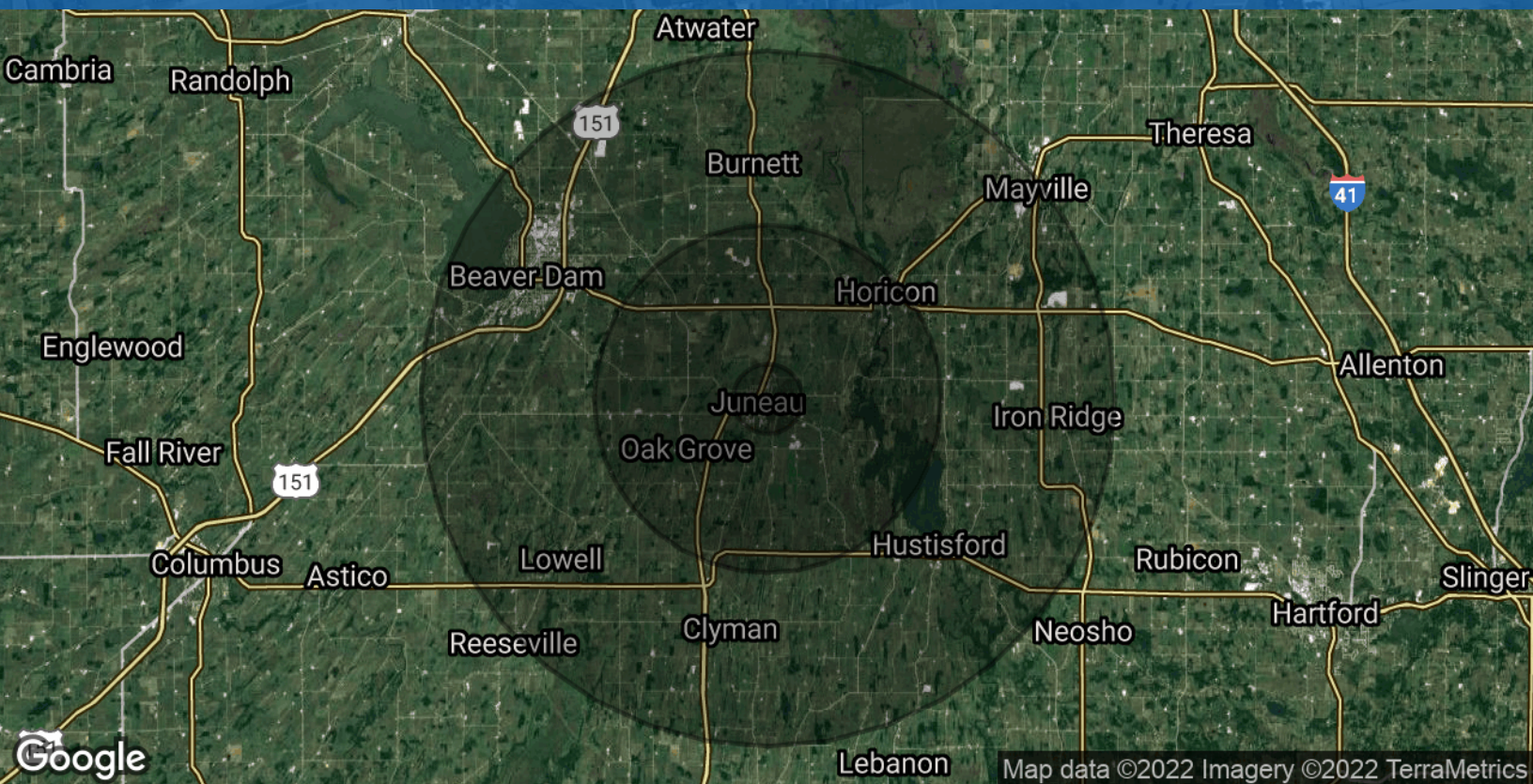
FOR SALE
LAND



FOR SALE LAND



FOR SALE LAND



Population

	1 Mile	5 Miles	10 Miles
Total Population	293	7,039	30,085
Average Age	37.4	37.4	38.5
Average Age (Male)	34.6	35.3	37.0
Average Age (Female)	41.0	40.2	40.1

Households & Income

	1 Mile	5 Miles	10 Miles
Total Households	102	2,509	11,868
# of Persons per HH	2.9	2.8	2.5
Average HH Income	\$57,731	\$59,337	\$60,512
Average House Value	\$181,774	\$184,520	\$174,599

* Demographic data derived from 2010 US Census