

GROUND FLOOR RETAIL

1100

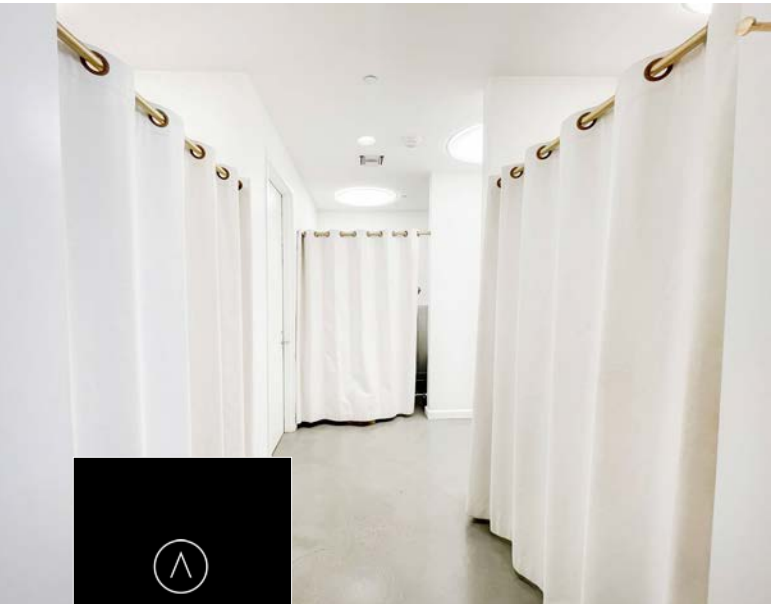
SOUTH HOPE STREET



SOUTHPARK | DTLA

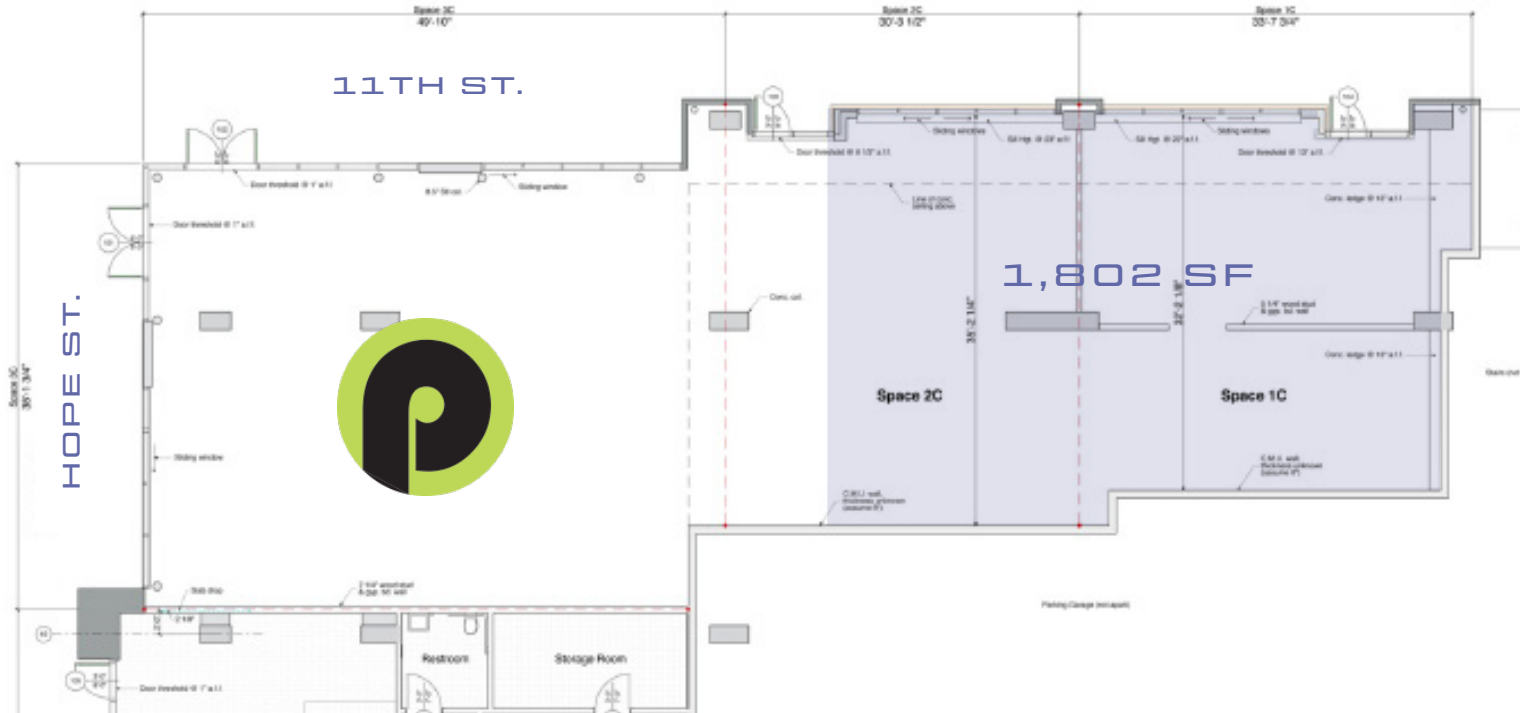
CBRE

GROUND FLOOR RETAIL



GROUND FLOOR RETAIL

SITEPLAN



1 RETAIL SPACE | ± 1,802

Rate: \$2.75/SF/Month Modified Gross



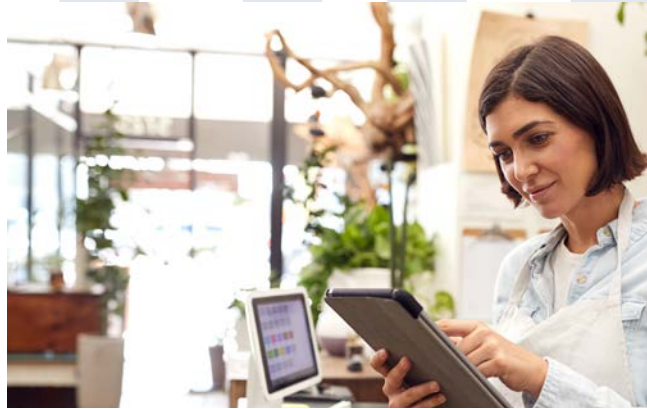
GROUND FLOOR RETAIL

1100

SOUTH HOPE STREET



GROUND FLOOR RETAIL

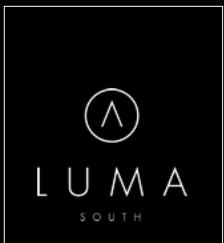


Prime street frontage retail space along 11th and Hope

Join neighboring retailers: Starbucks, Prank Bar, Sonoritas and more

Ceiling heights spanning from 12"-24"

Green technology and low utility costs



THE SITE

SOUTHPARK | DTLA

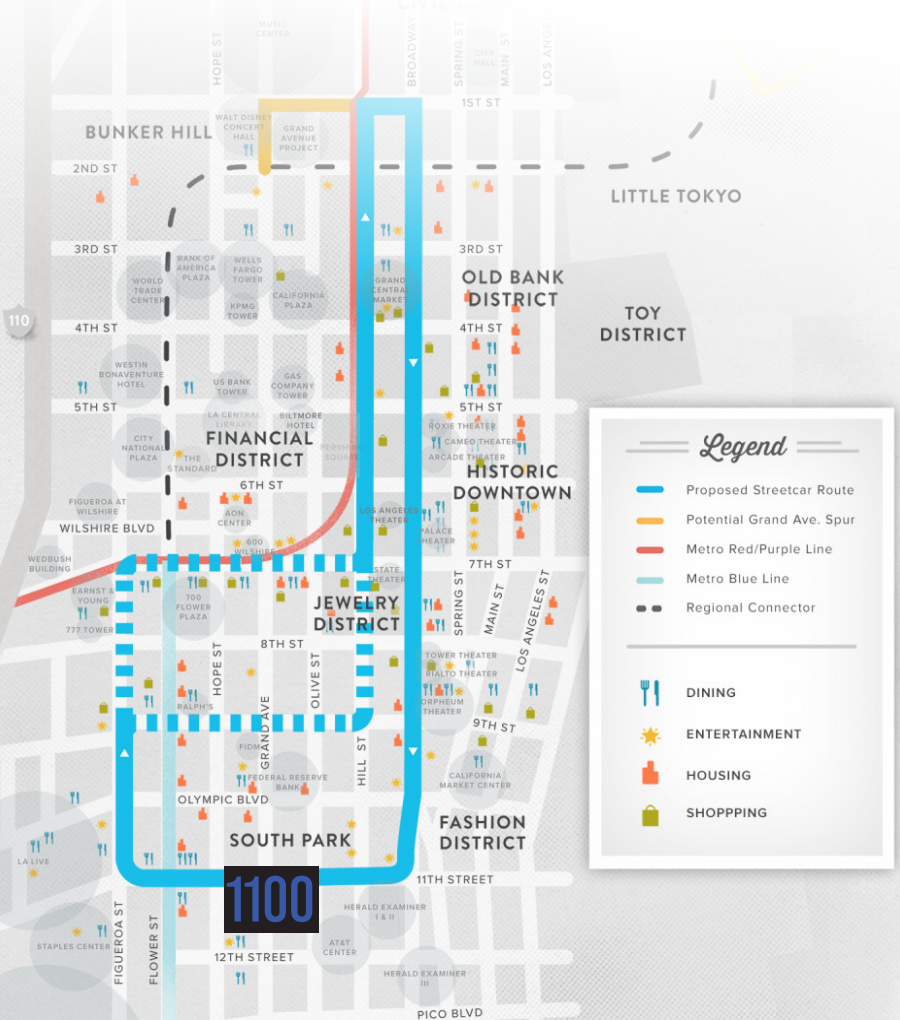
LA STREETCAR HIGHLIGHTS

Streetcar and road diet development approved.

The streetcar will run from L.A. Live to the Civic Center with spines on Broadway and Hill Street. Streetcar officials hope to open the project by 2017.

The increased connectivity and access provided by the streetcar will generate approximately \$24.5 million in new spending on retail, food, beverage, entertainment and hospitality services per year.

A dependable streetcar system would assure investors that their investments have permanent access to public transit and a steady flow of patrons and tenants. This will lead to an estimated \$1.1 billion in new downtown residential construction, housing units, and office spaces.



THE NEIGHBORHOOD

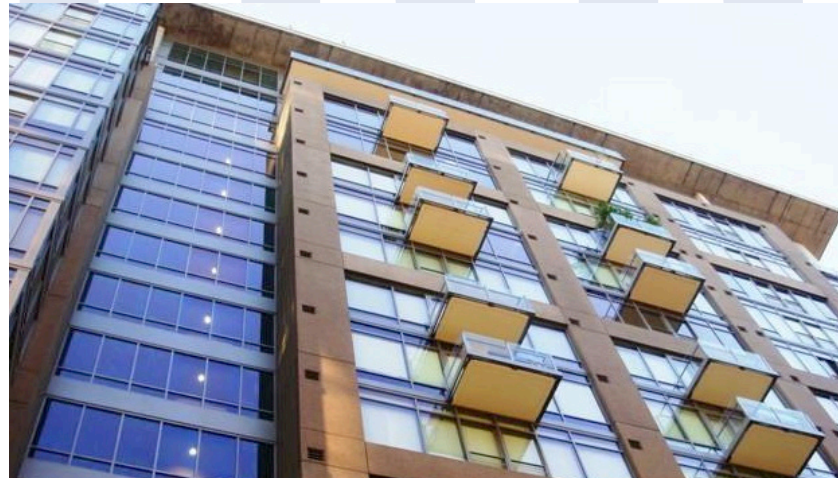
Directly across from AEG's headquarters
at the Desmond building

Corner of Hope & 11th in Southpark

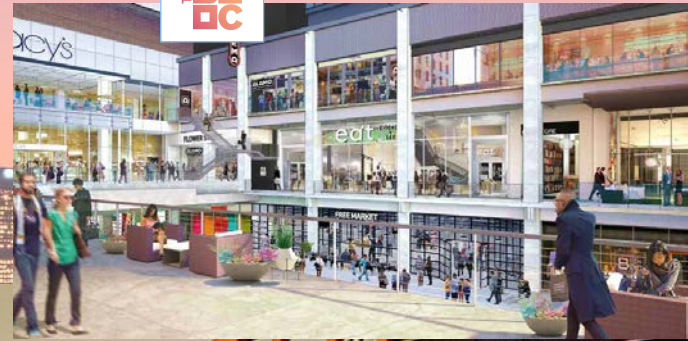
Pathway to Staples Center and LA Live

± 2,000 high-end condos and ap

Directly on the Streetcar route



GROUND FLOOR RETAIL
PROMINENT AREA NEIGHBORS



GROUND FLOOR RETAIL

METRORAIL & BUSYWAYS



M Metro 

53 MILLION
ANNUAL RIDERS
ALL LINES LEAD TO DTLA

METRO | YOUR CONNECTION



M Metro

DTLA DEMOGRAPHICS

EMPLOYEES

±500,000



Median Income
\$98,020



Rent
49%



Own
44%



Median Age
39



College Educated
76%



Own Pets
51%

RESIDENTS

±64,965



Median Income
\$98,700



Rent
71%



Own
27%



Median Age
34



College Educated
80%



Own Pets
42%



ACTIVITIES ATTENDANCE



Median grocery spend per Week:
\$107.00



Per person median spend on lunch in Downtown:
\$14.54



Per person median spend on dinner in Downtown:
\$31.35



Sporting Events
1.8x / year



Music, Theater, Dance
2.4x / year



Art Museums, Galleries
2.2x / year



Median grocery spend per Week:
\$103.00



Per person median spend on lunch in Downtown:

\$16.42



Per person median spend on dinner in Downtown:

\$30.03



Sporting Events
2x / year



Music, Theater, Dance
3x / year



Art Museums, Galleries
3x / year

GROUND FLOOR RETAIL



1100

SOUTH HOPE STREET

For retail inquiries, please contact:

DERRICK MOORE

Senior Vice President

Lic. 01029938

+1 626 676 7003

derrick.moore@cbre.com

DIANDRA DILLON

Sales Assistant

Lic. 02210049

+1 213-613-3222

diandra.dillon@cbre.com

SOUTHPARK | DTLA

© 2021 CBRE, Inc. All rights reserved. This information has been obtained from sources believed reliable, but has not been verified for accuracy or completeness. You should conduct a careful, independent investigation of the property and verify all information. Any reliance on this information is solely at your own risk. CBRE and the CBRE logo are service marks of CBRE, Inc. All other marks displayed on this document are the property of their respective owners, and the use of such logos does not imply any affiliation with or endorsement of CBRE. Photos herein are the property of their respective owners. Use of these images without the express written consent of the owner is prohibited.

CBRE