

# MANOR PARK SHOPPING CENTER

**Gordon Winegar**

302.283.1800  
gwinegar@dsmre.com

**Dann Gladnick**

302.283.1800  
dgladnick@dsmre.com

**1409 NORTH DUPONT HIGHWAY, NEW CASTLE, DE 19720**

**RETAIL FOR LEASE**



3304 OLD CAPITOL TRAIL \\\ WILMINGTON, DE 19808 \\\ 302.283.1800 \\\ DSMRE.COM

### PROPERTY DESCRIPTION

Manor Park, a vibrant neighborhood center nestled along the bustling U.S. 13, is undergoing an exciting renovation. Anchored by popular retailers Cricket Wireless and Dollar General, this shopping center is situated at a signalized intersection, ensuring easy access for shoppers. With its prime location, Manor Park provides convenient connectivity to major highways including I-95 and I-295.

### PROPERTY DETAILS

- **Coming Soon:** 6,877 SF (former Walgreens)
- **Minimum Divisible:** 3,000 SF
- **Lease Rate:** Please contact listing agent
- **Traffic Counts:** 51,839 VPD
- **Space Dimensions:** 77 (W) x 89 (H) depth
- Prime endcap unit
- Pylon signage available
- Located in highly populated area

DEMOGRAPHICS	1 MILE	3 MILES	5 MILES
Total Population	9,850	52,541	179,213
Total Households	3,643	20,403	72,922
Average HH Income	\$84,703	\$82,162	\$81,794
Median Age	40	41	40



### For More Information, Contact:

Gordon Winegar  
gwinegar@ds mre.com  
302.283.1800 Office  
302.757.5353 Cell

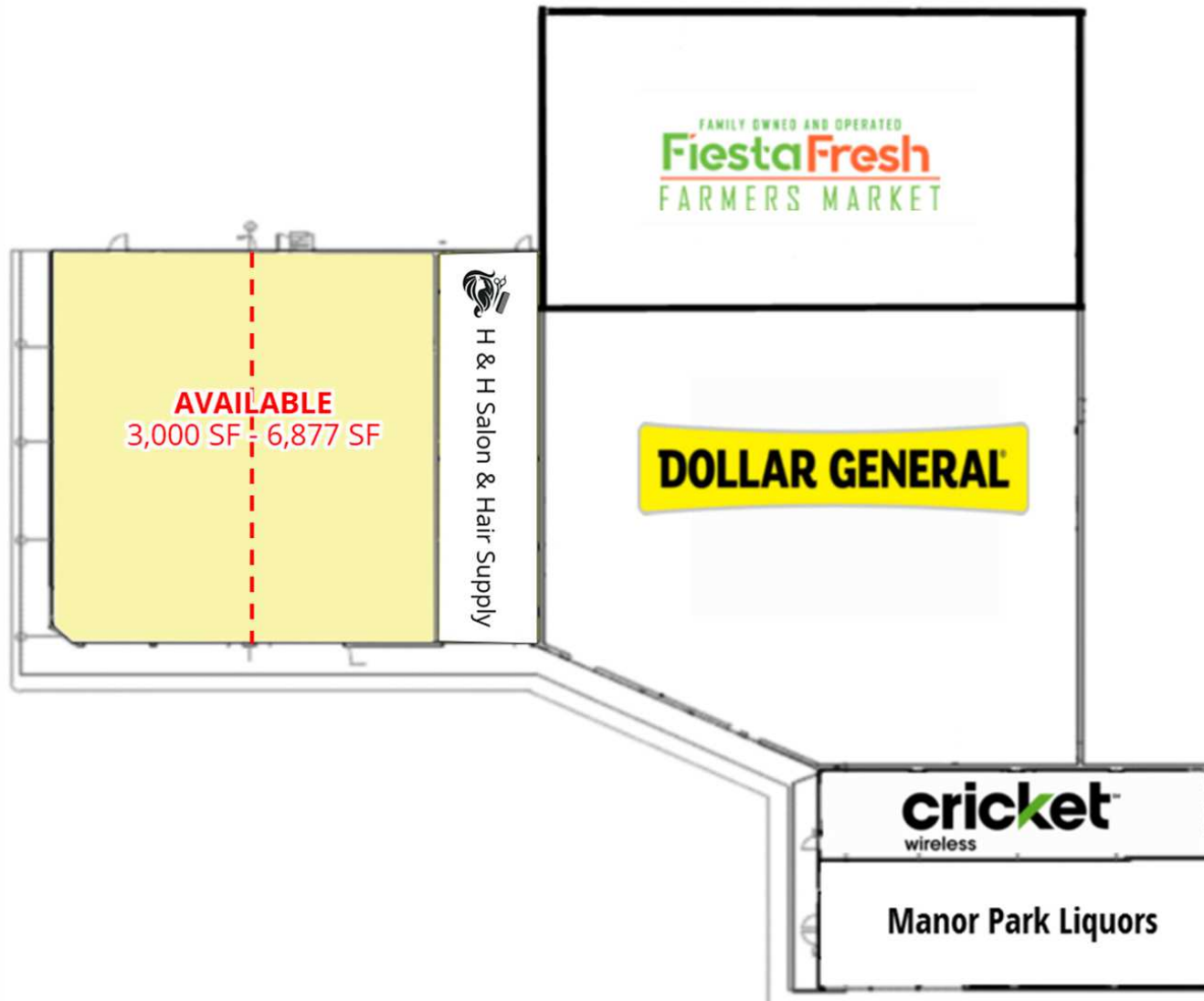
Dann Gladnick  
dgladnick@ds mre.com  
302.283.1800 Office  
302.540.8969 Cell

**DSM Commercial**  
Real Estate Services  
3304 Old Capitol Trail  
Wilmington, DE 19808  
ds mre.com

**MANOR PARK SHOPPING CENTER**

1409 North DuPont Highway  
New Castle, DE 19720

**RETAIL SPACE  
FOR LEASE**



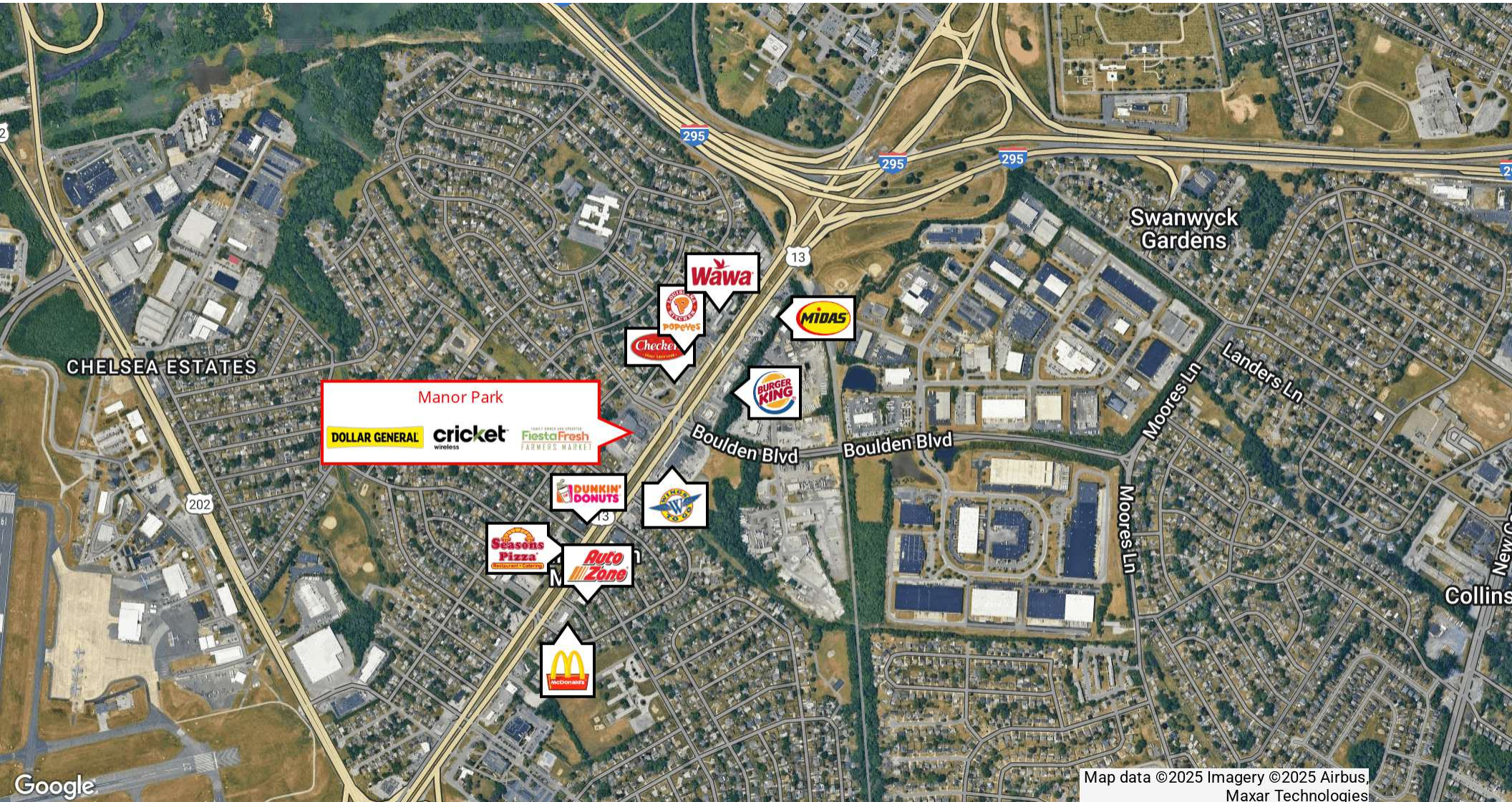
For More Information, Contact:

Gordon Winegar  
gwinegar@dsmre.com  
302.283.1800 Office  
302.757.5353 Cell

Dann Gladnick  
dgladnick@dsmre.com  
302.283.1800 Office  
302.540.8969 Cell

**DSM Commercial**  
Real Estate Services  
3304 Old Capitol Trail  
Wilmington, DE 19808  
dsmre.com





For More Information, Contact:

Gordon Winegar  
gwinegar@dsmre.com  
302.283.1800 Office  
302.757.5353 Cell

Dann Gladnick  
dgladnick@dsmre.com  
302.283.1800 Office  
302.540.8969 Cell

**DSM Commercial**  
Real Estate Services  
3304 Old Capitol Trail  
Wilmington, DE 19808  
dsmre.com



