

Retail / Office Space for Lease

3800 EUCLID AVENUE, CLEVELAND, OH 44115

NEWEST MIXED USE RETAIL/RESIDENTIAL IN MIDTOWN!



Overview

LOCATION X 3! MAJOR REDEVELOPMENT IN MIDTOWN'S HEALTH-TECH CORRIDOR

Directly across from the new CHILDREN'S MUSEUM, & neighboring NEORSD, RED-CROSS, APPLIED TECHNOLOGIES, MASONIC PERFORMING ARTS, CITY ARCHITECT & MORE.

Be the first to serve this growing entertainment and business neighborhood.

2 RETAIL SPACES AVAILABLE: CAN BE COMBINED

Space:	Size:	Lease Rate:
1	1,235 SF	\$12.00 - \$16.00 SF/YR (MG)
2	1,570 SF	\$12.00 - \$16.00 SF/YR (MG)

Highlights

- Walkable Location
- Mixed Use Residential/Retail Building
- Euclid Frontage
- Indoor Parking

Property Details

- Lease Rate**
\$12.00 - \$16.00 SF/YR (MG)
- Space Available**
1,235 - 2,805 SF
- Building Size**
28,000 SF
- Lot Size**
0.39 Acres
- Zoning**
GR-E4: General Retail

Rev: June 6, 2024



Retail / Office Space for Lease

3800 EUCLID AVENUE, CLEVELAND, OH 44115



Rev: June 6, 2024



Our Network Is Your Edge

All information is from sources deemed reliable and is subject to errors, omissions, change of price, rental, prior sale, and withdrawal without notice. Prospect should carefully verify each item of information contained herein.

Joe Zumpano

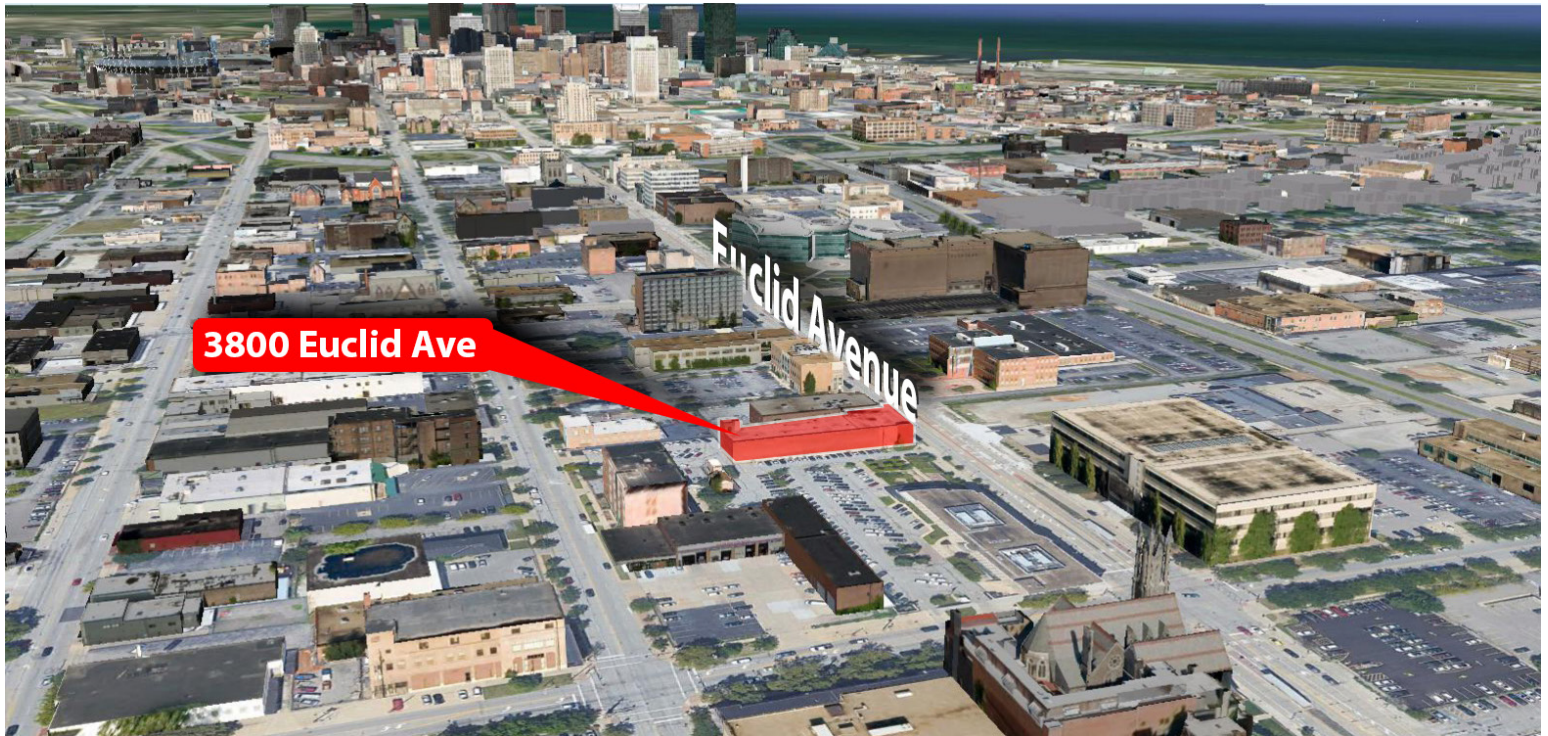
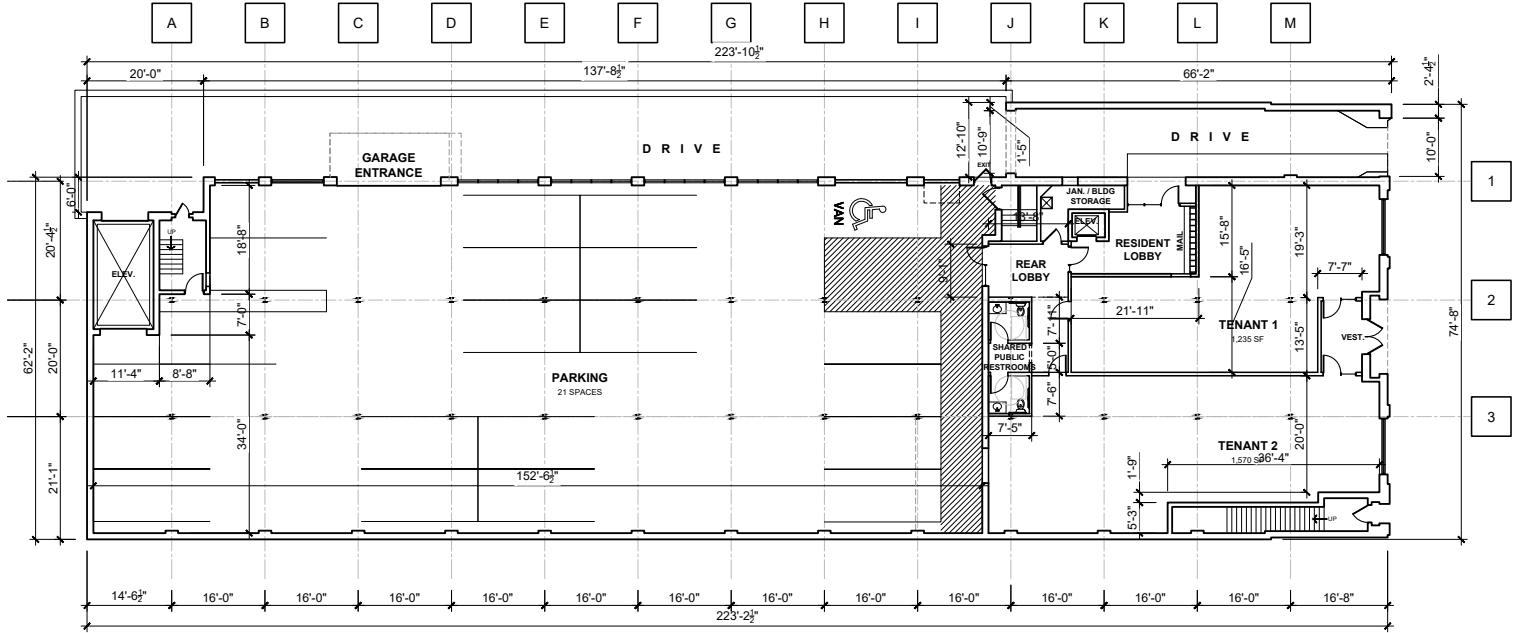
C: 330.990.0847

O: 330.940.9360

JZumpano@HoffLeigh.com

Retail / Office Space for Lease

3800 EUCLID AVENUE, CLEVELAND, OH 44115



Rev: June 6, 2024

Hoff & Leigh
 Our Network Is Your Edge
 All information is from sources deemed reliable and is subject to errors, omissions, change of price, rental, prior sale, and withdrawal without notice. Prospect should carefully verify each item of information contained herein.

Joe Zumpano
 C: 330.990.0847
 O: 330.940.9360
 JZumpano@HoffLeigh.com