

# AVAILABLE

## Turner Business Center

279 Turner Road (Bldg 3), North Chesterfield, VA 23225



### Exclusive Agent:

**WILSON FLOHR, SIOR**  
(804) 521-1458  
wilson@porterinc.com

**BYRON HOLMES, CCIM, SIOR**  
(804) 521-1448  
byron@porterinc.com

4801 Radford Avenue | P.O. Box 6482  
Richmond, VA 23230  
www.porterinc.com  
804-353-7994

**PORTER**  
R E A L T Y

**CORFAC**  
INTERNATIONAL

**SIOR**

**CCIM**

### HIGHLIGHTS

- 3,750 SF End Unit
- 882 SF Office and Showroom Area
- 2,705 SF Warehouse
- Professional Business Park
- Opportunity Zone & Technology Zone Location
- Zoned C-4: Retail, Office, Flex Uses Allowed
- Roll-Up Door 9' x 8'
- Curbside Loading (Concrete Drive-In Ramp)
- 15' - 18' Ceilings
- 208 Volt 3 Phase Electrical Service
- Immediate Access to Chippenham Parkway, Powhite Parkway, & Downtown Richmond
- Located off Midlothian Turnpike (Rt 60)
- For Lease: \$4,500/Month

This information has been prepared by Porter Realty Company, Inc. for marketing purposes only. No representation or warranty, expressed or implied, is made as to the accuracy of the foregoing information. Terms of sale or lease and availability are subject to change or withdrawal without notice.

# PROPERTY PHOTOS

279 Turner Road (Bldg 3) | North Chesterfield, VA 23225

Turner Road Business Center



**Wilson Flohr, SIOR**  
(804) 521-1458  
wilson@porterinc.com

**Byron Holmes, CCIM, SIOR**  
(804) 521-1448  
byron@porterinc.com



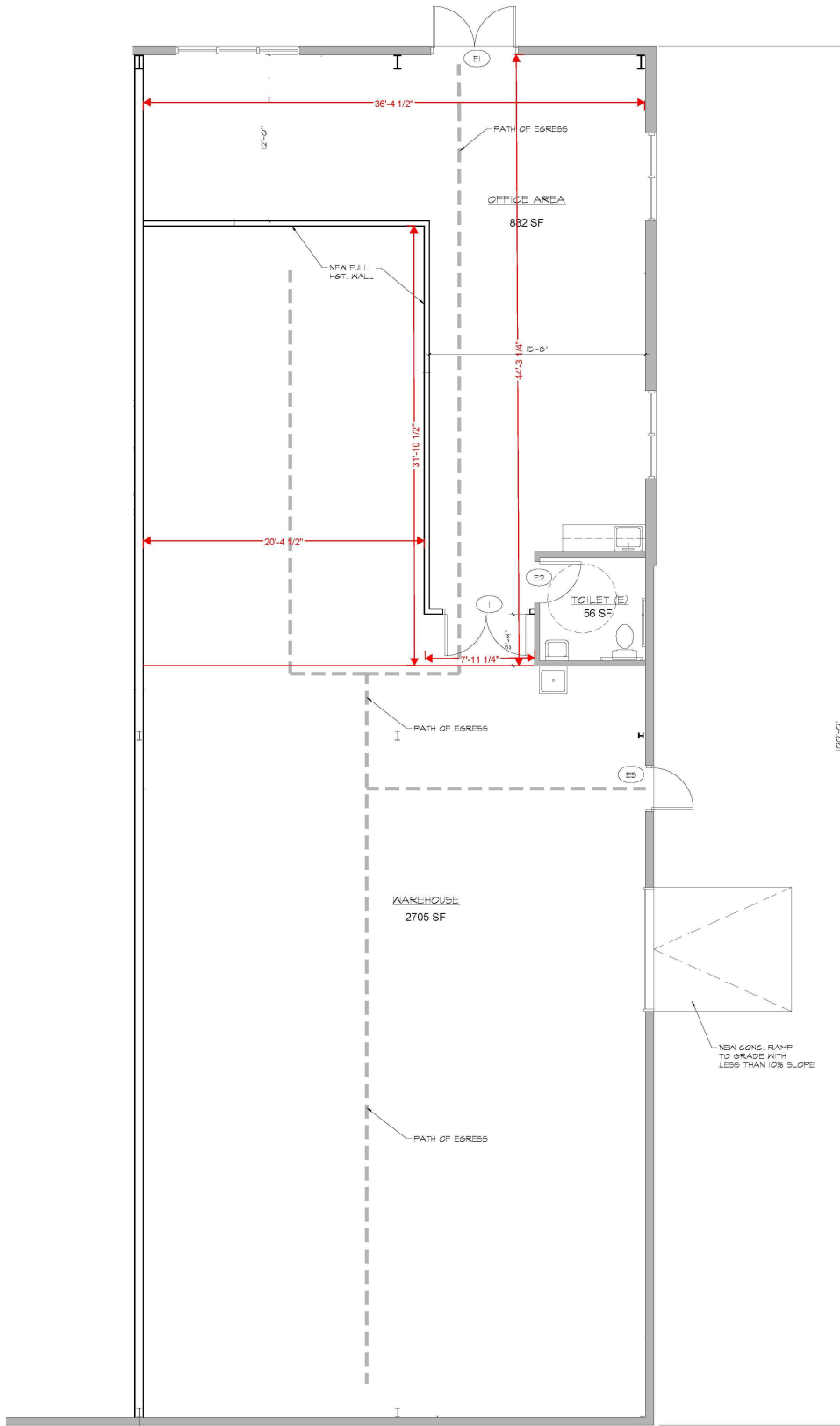
Porter Realty Company, Inc. | 4801 Radford Avenue | P.O. Box 6482 | Richmond, VA 23230 | www.porterinc.com

This information has been prepared by Porter Realty Company, Inc. for marketing purposes only. No representation or warranty, expressed or implied, is made as to the accuracy of the foregoing information. Terms of sale or lease and availability are subject to change or withdrawal without notice.

# PROPERTY PHOTOS

279 Turner Road (Bldg 3) | North Chesterfield, VA 23225

Turner Road Business Center



Wilson Flohr, SIOR  
(804) 521-1458  
wilson@porterinc.com

Byron Holmes, CCIM, SIOR  
(804) 521-1448  
byron@porterinc.com



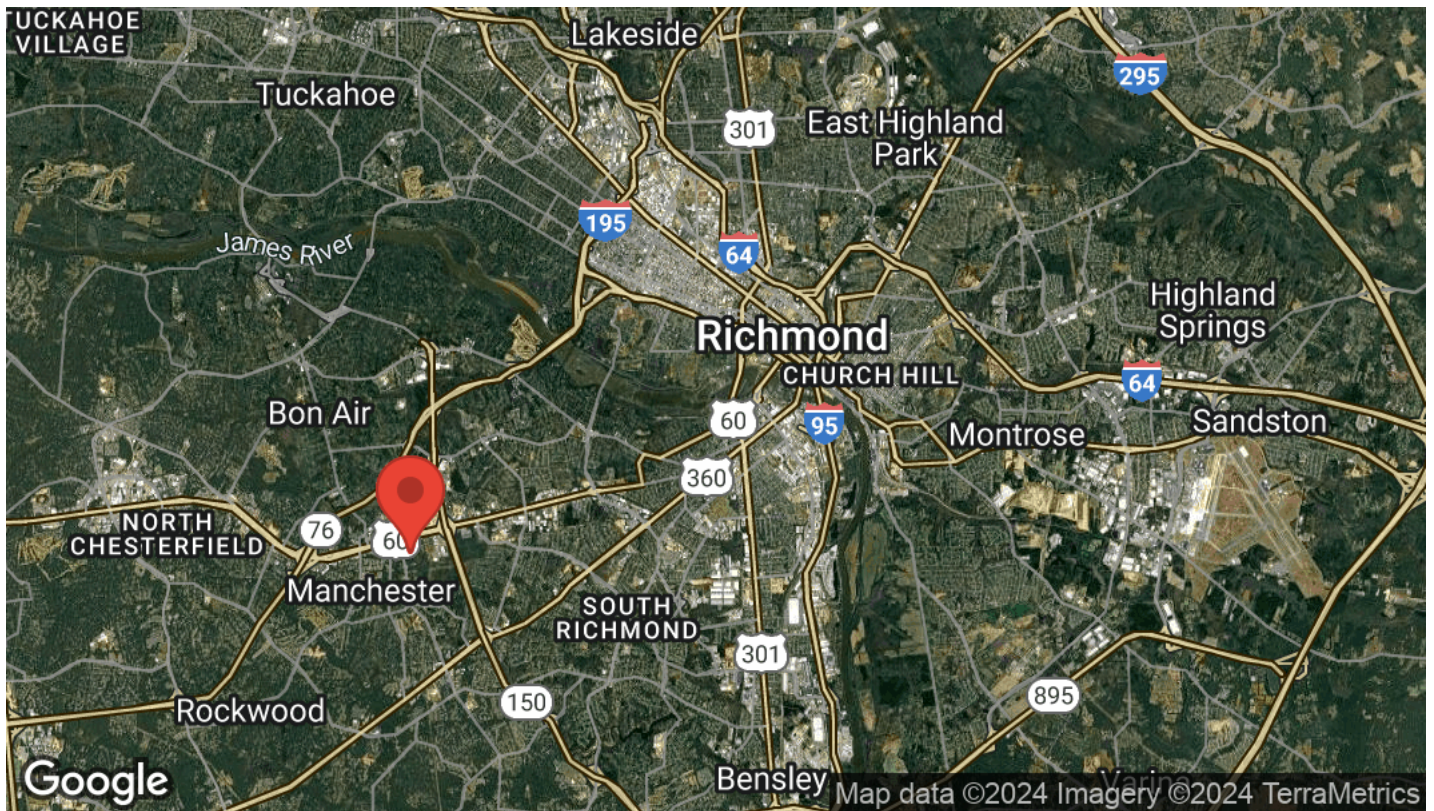
Porter Realty Company, Inc. | 4801 Radford Avenue | P.O. Box 6482 | Richmond, VA 23230 | www.porterinc.com

This information has been prepared by Porter Realty Company, Inc. for marketing purposes only. No representation or warranty, expressed or implied, is made as to the accuracy of the foregoing information. Terms of sale or lease and availability are subject to change or withdrawal without notice.

# LOCATION MAPS

279 Turner Road (Bldg 3) | North Chesterfield, VA 23225

Turner Road Business Center



**Wilson Flohr, SIOR**  
(804) 521-1458  
wilson@porterinc.com

**Byron Holmes, CCIM, SIOR**  
(804) 521-1448  
byron@porterinc.com



Porter Realty Company, Inc. | 4801 Radford Avenue | P.O. Box 6482 | Richmond, VA 23230 | www.porterinc.com

This information has been prepared by Porter Realty Company, Inc. for marketing purposes only. No representation or warranty, expressed or implied, is made as to the accuracy of the foregoing information. Terms of sale or lease and availability are subject to change or withdrawal without notice.