

# OFFICE SPACE FOR LEASE!

258 SE 6TH AVENUE, DELRAY BEACH, FL 33483

**ONE SPACE LEFT!  
1,092 SF AVAILABLE**



## THE PROPERTY

Great opportunity to lease an office space directly on Federal Hwy, just two blocks south of Atlantic Avenue in Downtown Delray Beach. This second-floor office space is approximately 1,092 SF with a mostly open floor plan and 2 private offices.

Plenty of on-site parking and walking distance to Atlantic Avenue. This office also has a private bathroom in the suite and is available for immediate occupancy. This space will not last long!

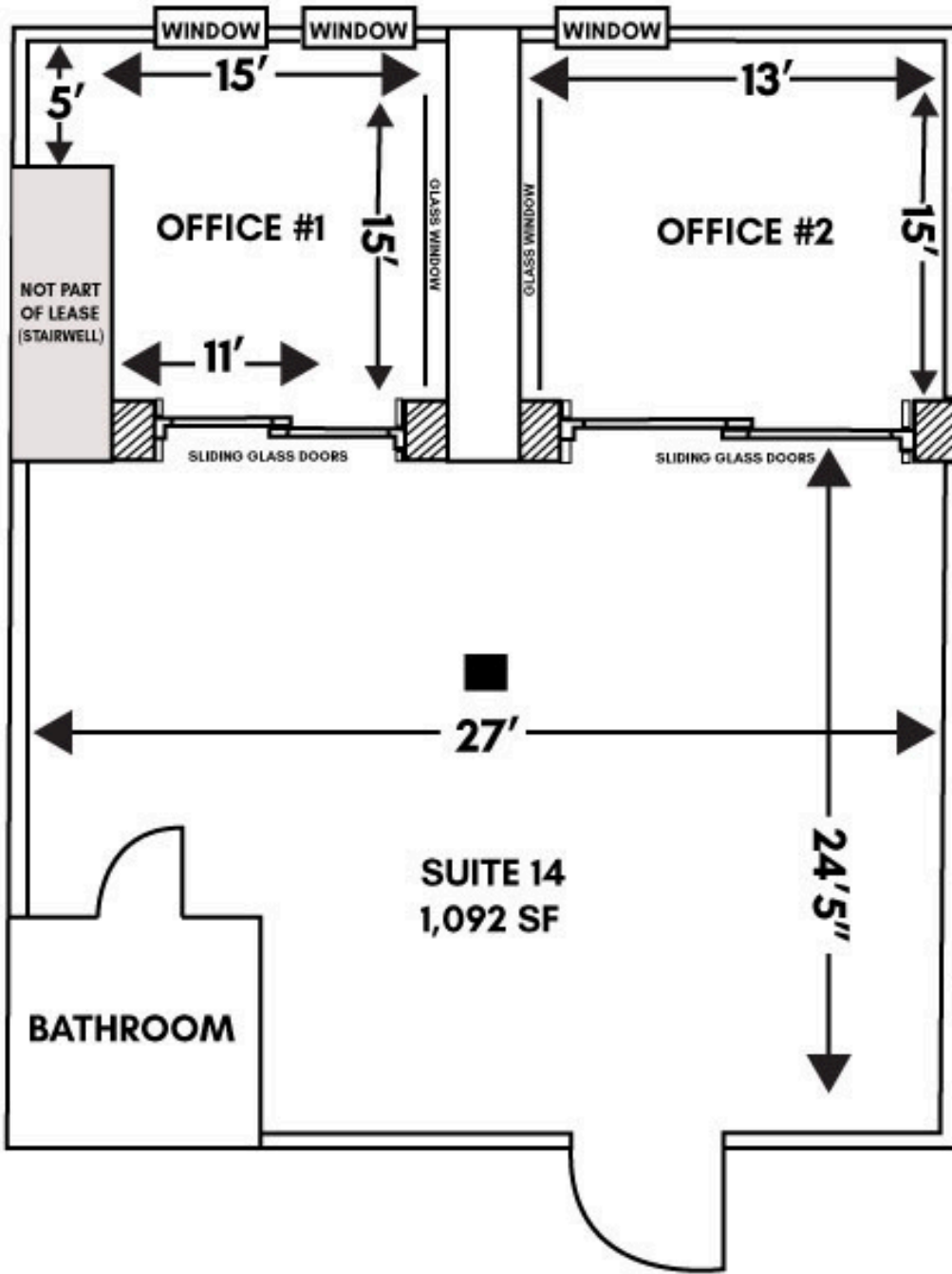
### CONTACT INFORMATION:

GARY BROIDIS  
(561) 703-9298

GARY@ATLANTICCG.COM

**ATLANTIC**  
Commercial Group, Inc.®  
Licensed Real Estate Brokers

ATLANTICCG.COM



## HIGHLIGHTS

- \$45/PSF Gross
- Private 2nd Floor Office Suite
- Direct Visibility on Federal Highway (aka SE 6th Ave)
- Monument Signage Available
- Competitive Lease Rates

**ATLANTIC**

Commercial Group, Inc.®

Licensed Real Estate Brokers

ATLANTICCG.COM

GARY BROIDIS | 561-703-9298 | GARY@ATLANTICCG.COM