

**FOR SALE OR LEASE**

2512

2512 River Plaza Drive  
**SACRAMENTO, CA**



**FOR SALE: \$3,062,000.00**

(\$275.00/GROSS SF)

**LEASE RATE: \$2.25 RSF FULL-SERVICE**



**2512 River Plaza Drive**

# THE OFFERING

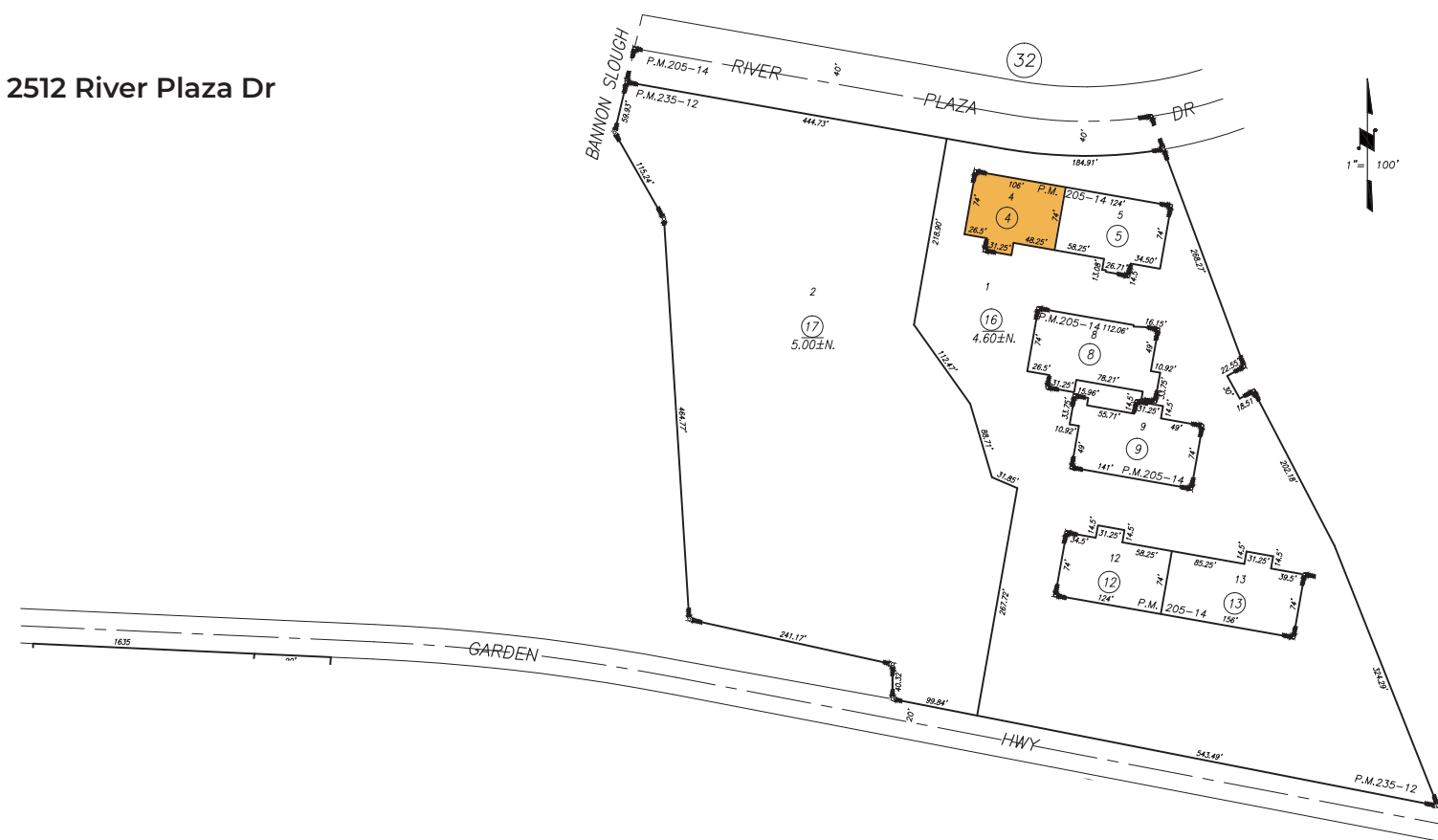
## PROPERTY OVERVIEW

For the first time in more than 10 years, prospective users now have the chance to purchase or lease space at River Plaza Corporate Center (RPCC). With a mix of quality corporate and professional uses, RPCC offers a park-like environment within a highly productive business setting. Featuring a variety of food and retail services along the Sacramento River, this South Natomas submarket property offers all the convenience desired, and just minutes from the Sacramento skyline.

## PROPERTY INFORMATION

<b>Address</b>	2512 River Plaza Dr, Sacramento, CA 95833
<b>APN</b>	274-0680-004
<b>Building Size</b>	±11,134 Gross SF
<b>Floors</b>	Two
<b>Parking</b>	± 3.6/1,000 SF
<b>Zoning</b>	OB-PUD
<b>Year Built</b>	2008
<b>Elevators</b>	1
<b>Sprinklered</b>	Yes

**2512 River Plaza Dr**



# PROPERTY HIGHLIGHTS



Immediate access to both I-5 & I-80



Spacious, professional, business environment in a park-like setting



Only minutes from Downtown Sacramento



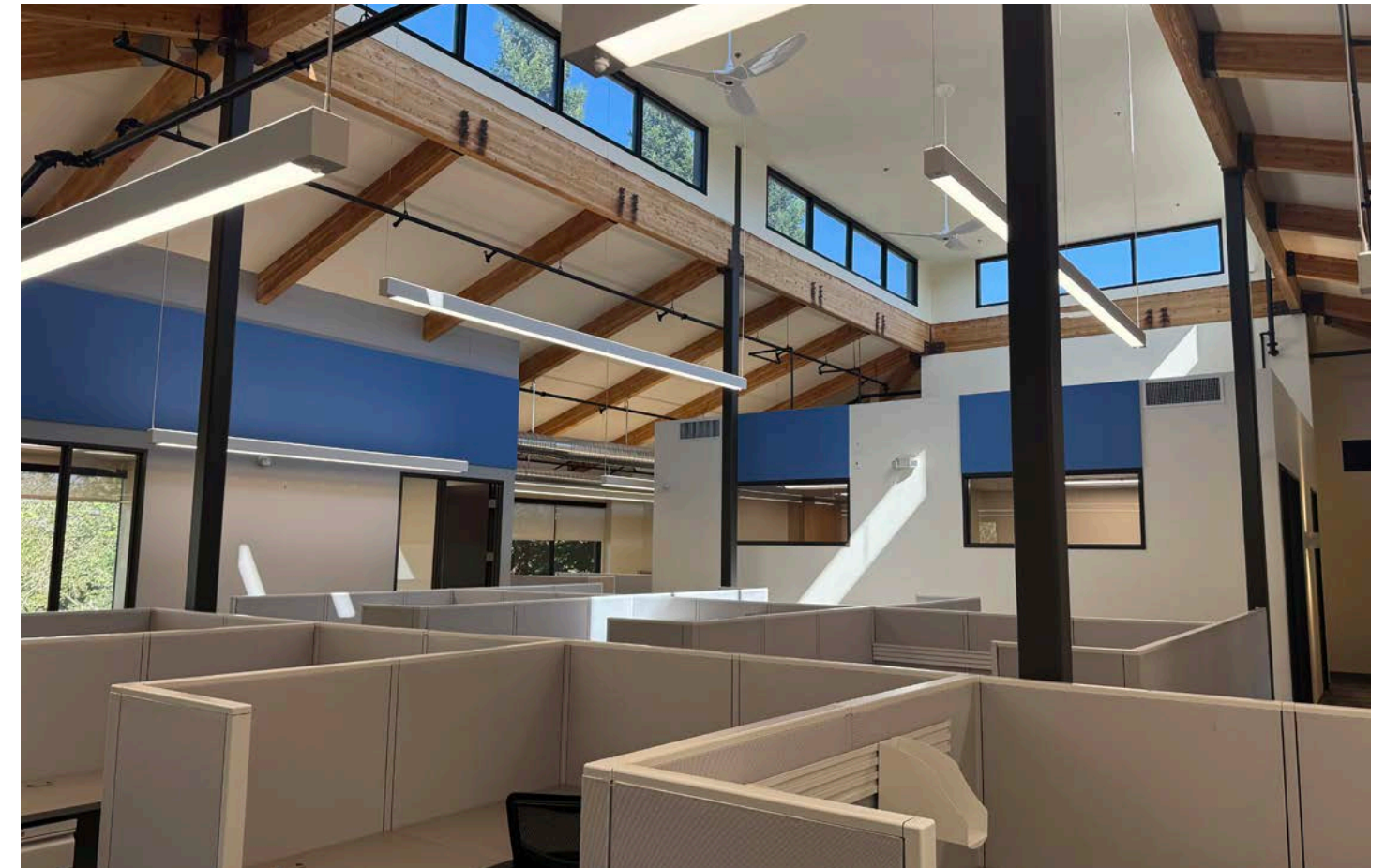
Nearby riverfront restaurants, lodging, banking & retail facilities



Close proximity to Sacramento International Airport

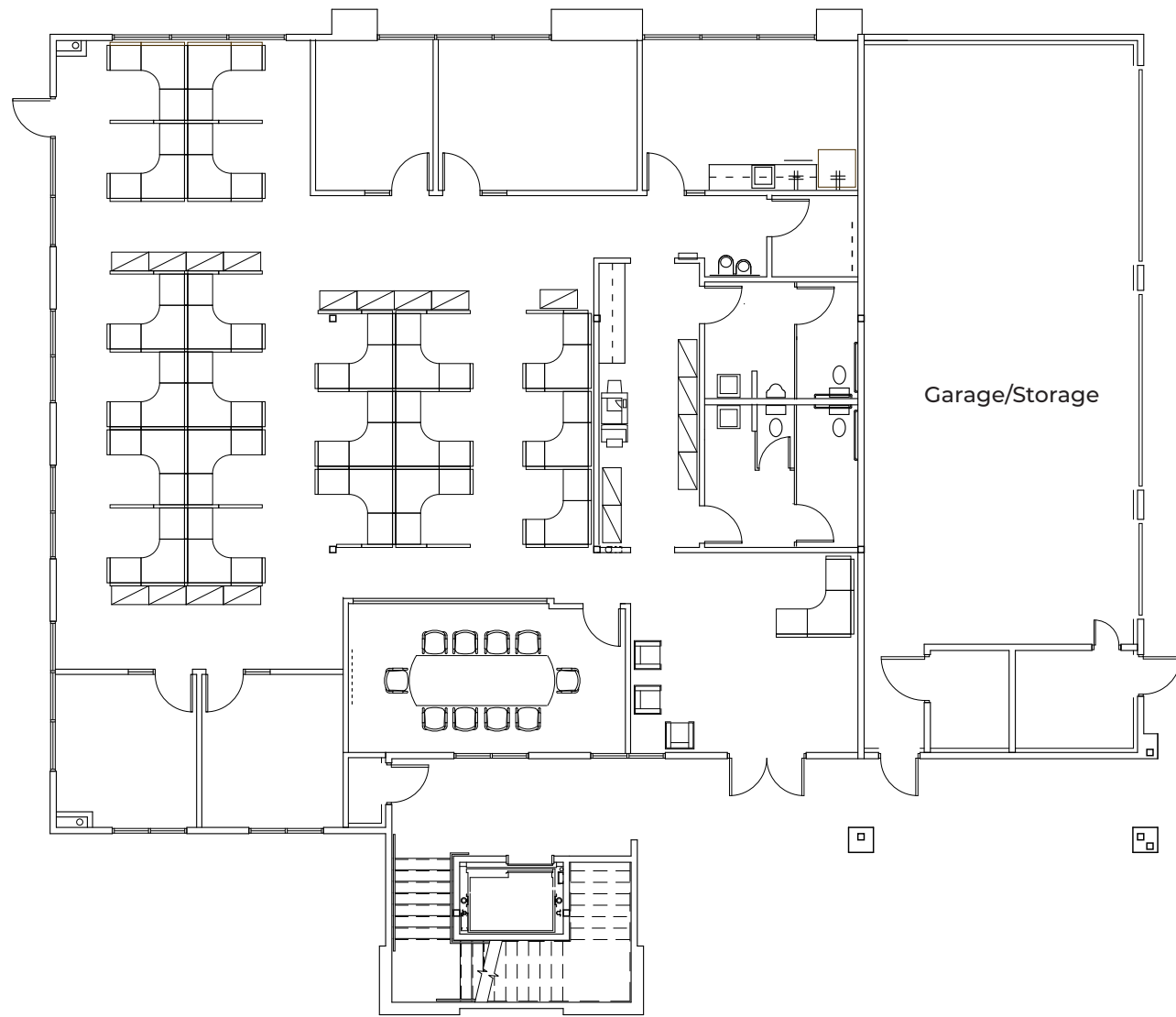


Surface, covered & garage parking



# 1<sup>ST</sup> FLOOR PLAN

±4,165 RSF



# 2<sup>ND</sup> FLOOR PLAN

±5,905 RSF



2512 River Plaza Drive

# LOCATION MAP



# CONTACT US

## HOWARD HUGHES

Senior Vice President  
T +1 916 491 4335  
howard.hughes@jll.com  
RE License #01026782

## CLYDE RAWLINGS

Independent Commercial Broker  
T +1 916 761 6638  
clyde.rawlingsCRE@gmail.com  
RE License #01836361



Although information has been obtained from sources deemed reliable, JLL does not make any guarantees, warranties or representations, express or implied, as to the completeness or accuracy as to the information contained herein. Any projections, opinions, assumptions or estimates used are for example only. There may be differences between projected and actual results, and those differences may be material. JLL does not accept any liability for any loss or damage suffered by any party resulting from reliance on this information. If the recipient of this information has signed a confidentiality agreement with JLL regarding this matter, this information is subject to the terms of that agreement. ©2026 Jones Lang LaSalle Brokerage, Inc. All rights reserved.