



FOR **SUBLEASE**

# STORAGE SPACE @ NORTHWEST PLAZA

5760 WABASH AVENUE | BALTIMORE, MARYLAND 21215



**MACKENZIE**

COMMERCIAL REAL ESTATE SERVICES, LLC

# PROPERTY OVERVIEW

## HIGHLIGHTS:

- 20,000 SF storage space
- Two (2) docks (shared)
- Situated within Northwest Plaza (Harvest Fare Supermarket, Roses, North American Trade School, Rainbow, Advance Auto Parts, Dollar Tree, Truist, Subway and more)
- Adjacent to the Reisterstown Plaza Metro Station
- Easy access to I-695, I-83, I-795 and I-70

AVAILABLE:

20,000 SF ±

DOCKS:

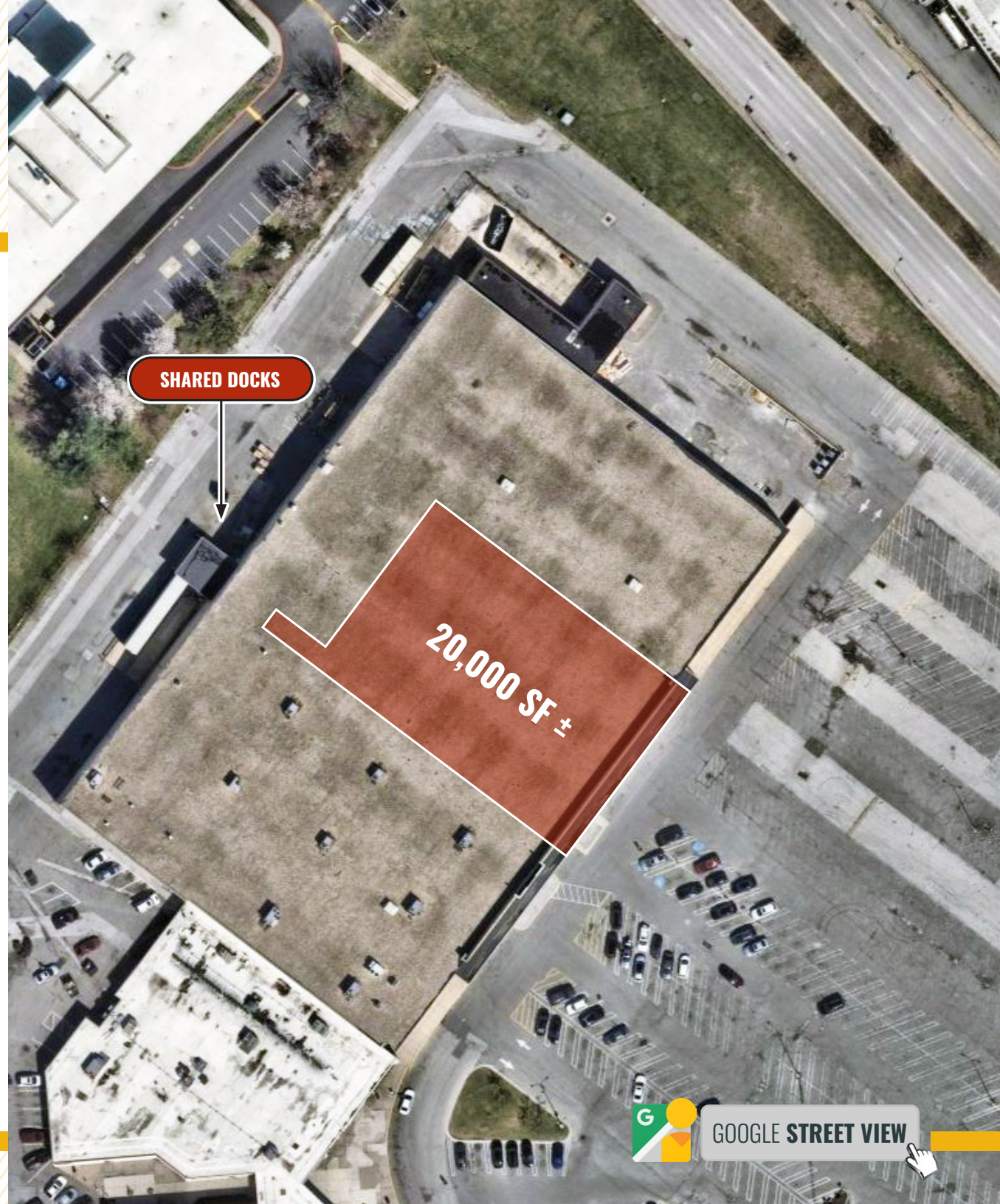
2

ZONING:

C-3 (GENERAL COMMERCIAL DISTRICT)

RENTAL RATE:

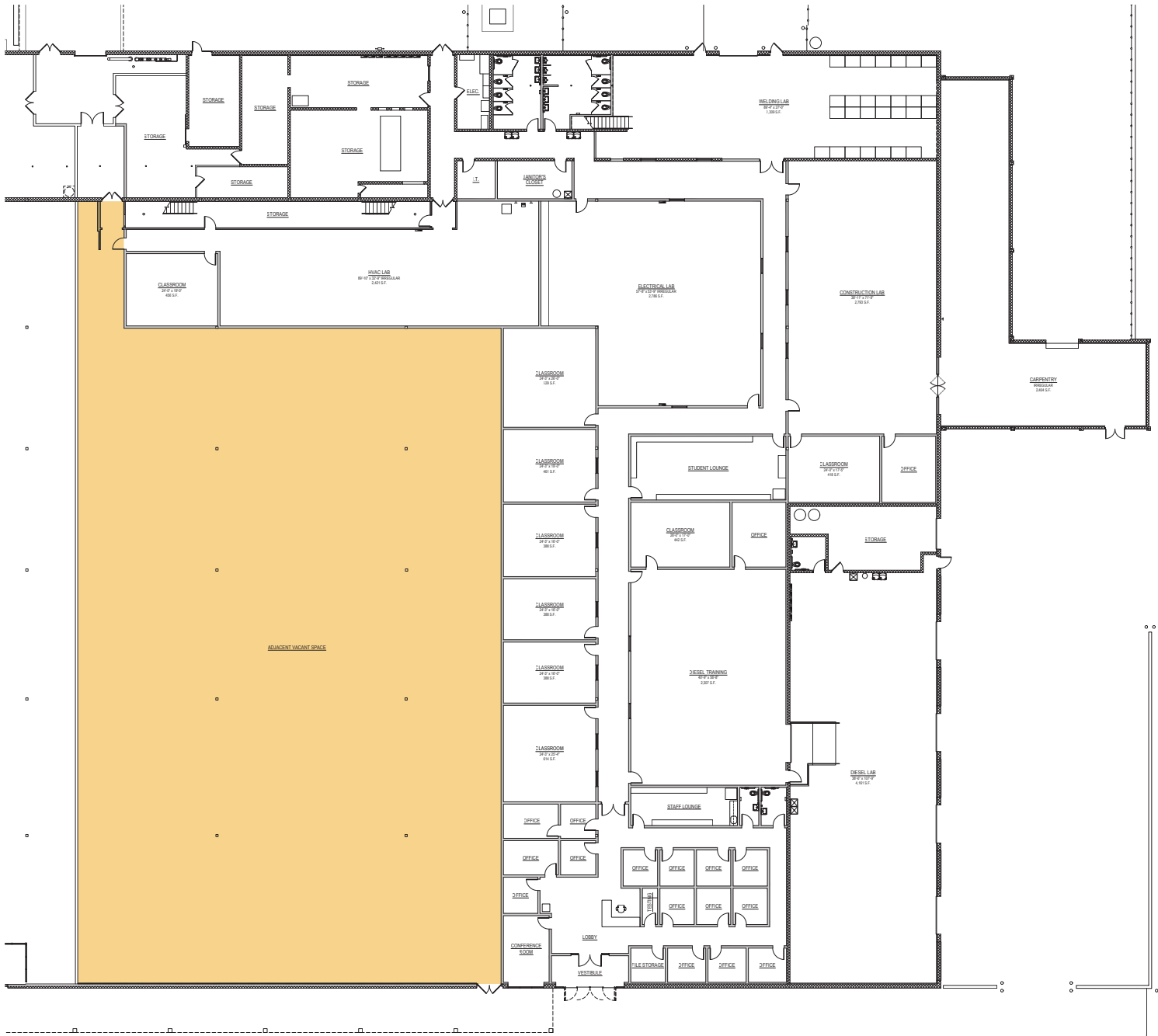
\$10,000/MO., GROSS



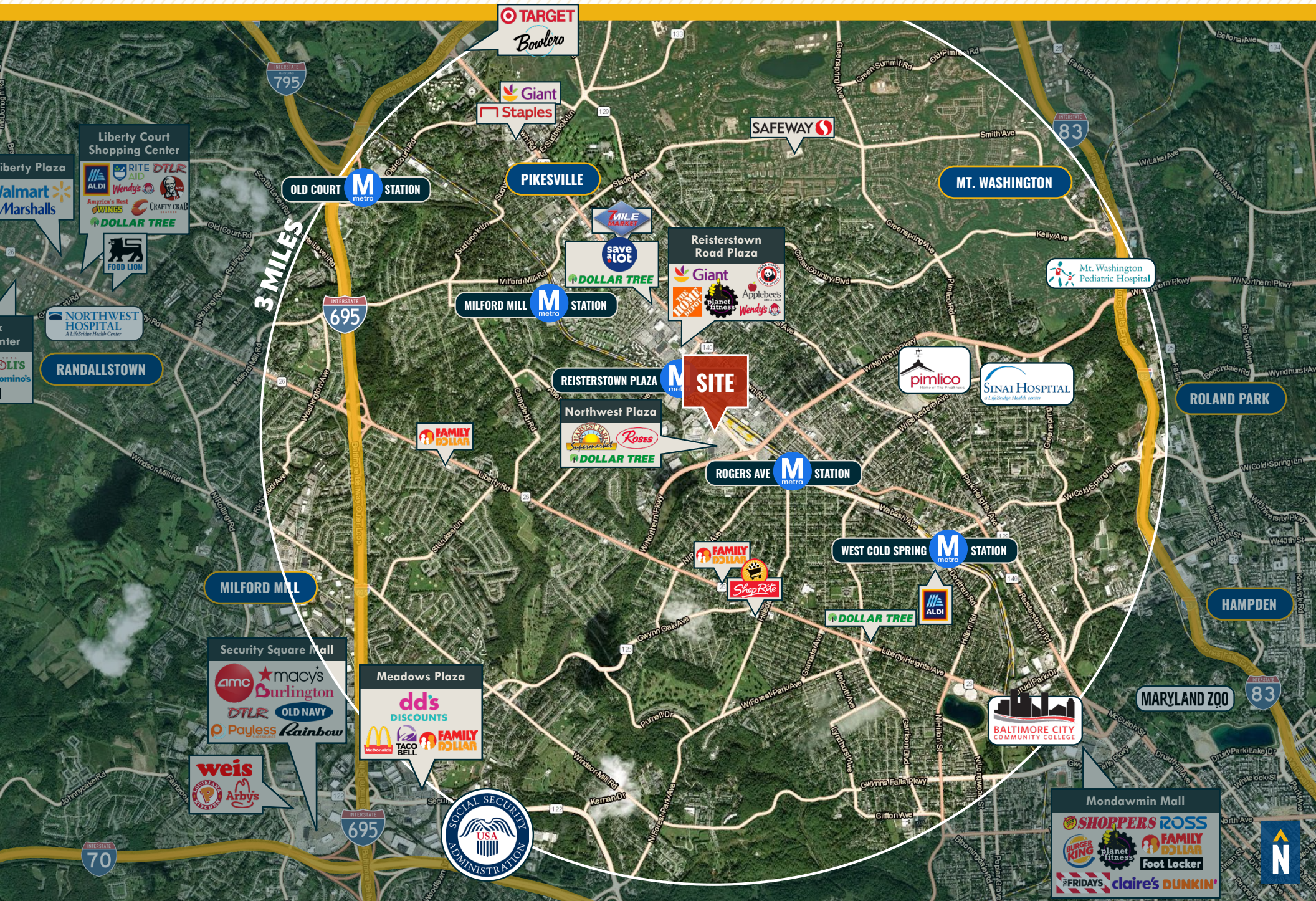
GOOGLE STREET VIEW



# FLOOR PLAN



# MARKET AERIAL



# FOR MORE INFO CONTACT:



**ANDREW MEEDER, SIOR**  
*SENIOR VICE PRESIDENT & PRINCIPAL*  
**410.494.4881**  
AMEEDER@mackenziecommercial.com



**MIKE RUOCCO**  
*SENIOR VICE PRESIDENT & PRINCIPAL*  
**410.494.4868**  
MRUOCCO@mackenziecommercial.com



**PATRICK J. SMITH**  
*REAL ESTATE ADVISOR*  
**847.346.2701**  
PJSMITH@mackenziecommercial.com



VISIT **PROPERTY PAGE** FOR MORE INFORMATION.



**MACKENZIE**  
COMMERCIAL REAL ESTATE SERVICES, LLC

**443-573-3200**  
111 S. Calvert Street  
Baltimore, MD 21202

OFFICES IN: ANNAPOLIS, MD **BALTIMORE, MD** BEL AIR, MD COLUMBIA, MD LUTHERVILLE, MD CHARLOTTESVILLE, VA

[www.MACKENZIECOMMERCIAL.com](http://www.MACKENZIECOMMERCIAL.com)

No warranty or representation, expressed or implied, is made as to the accuracy of the information contained herein, and same is submitted subject to errors, omissions, change of price, rental or other conditions, withdrawal without notice, and to any specific listing conditions imposed by our principals.