

Medical Office Building

\$1,250,000



- YEAR BUILT: 2000
- ZONING: C-4
- USE: Medical Office/Office
- BUILDING CLASS: B
- BUILDING SIZE: 7040 sf
- LOT SIZE: 19,500 sf
- NUMBER UNITS: 1-4
- NEW ROOF: 2020
- NOI: \$105,600
- ASKING RENT: \$ 15 psf
- NNN EXPENSE: \$ 5.32 psf
- CAP RATE: 8.4

**PRIME
LOCATION**

1315 SW 6TH AVENUE
TOPEKA, KS 66606

Jen Enderson
Broker Associate
816-668-0603
JenEnderson.Realtor@gmail.com

Pierre Heidrich
Broker Associate
816-210-7333
Pierre@KCMetroRealEstate.com

Medical Office Building

1315 SW 6TH AVENUE
TOPEKA, KS 66606



PROPERTY DESCRIPTION

Property is located within the close proximity of University of Kansas Health System, Kansas Rehabilitation Hospital, Stormont Vail Health, Cotton O'Neil Post-Acute Care, KMC Gastroenterology & Endoscopy Center, and Saint Francis Cardio Thoracic Surgery.

Property is currently configured for 3 tenants. Suite A and Suite B are configured together with a nice reception area, several

exam rooms, offices, X-Ray room, nurse stations, clean room, and break room with full kitchen.

Suite C and Suite D are currently configured separately for individual non medical Tenants or can be combined with Suites A and B for a single use Medical Tenant.

DEMOGRAPHICS	1 MILE	3 MILES	5 MILES
2024 POPULATION	12,907	60,161	128,696
2024 NUMBER HH	5,672	25,872	52,578

Pierre Heidrich
Broker Associate
816-210-7333

Pierre@KCMetroRealEstate.com

Jen Enderson
Broker Associate
816-668-0603

JenEnderson.Realtor@gmail.com

Medical Office Building

1315 SW 6TH AVENUE
TOPEKA, KS 66606



Pierre Heidrich
Broker Associate
816-210-7333

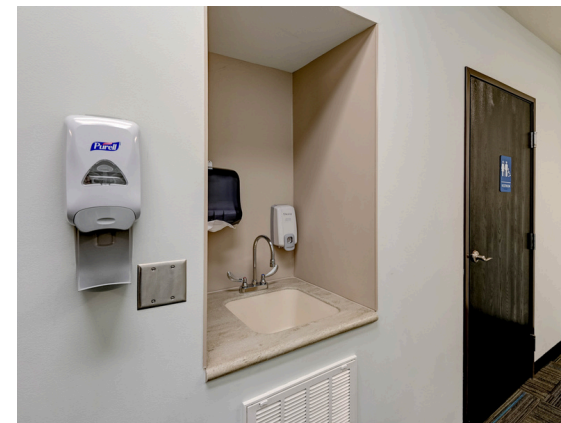
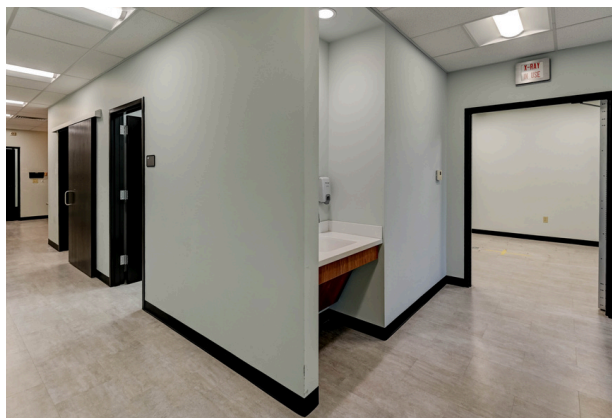
Pierre@KCMetroRealEstate.com

Jen Enderson
Broker Associate
816-668-0603

JenEnderson.Realtor@gmail.com

Medical Office Building

1315 SW 6TH AVENUE
TOPEKA, KS 66606



Pierre Heidrich
Broker Associate
816-210-7333

Pierre@KCMetroRealEstate.com

Jen Enderson
Broker Associate
816-668-0603

JenEnderson.Realtor@gmail.com

Medical Office Building

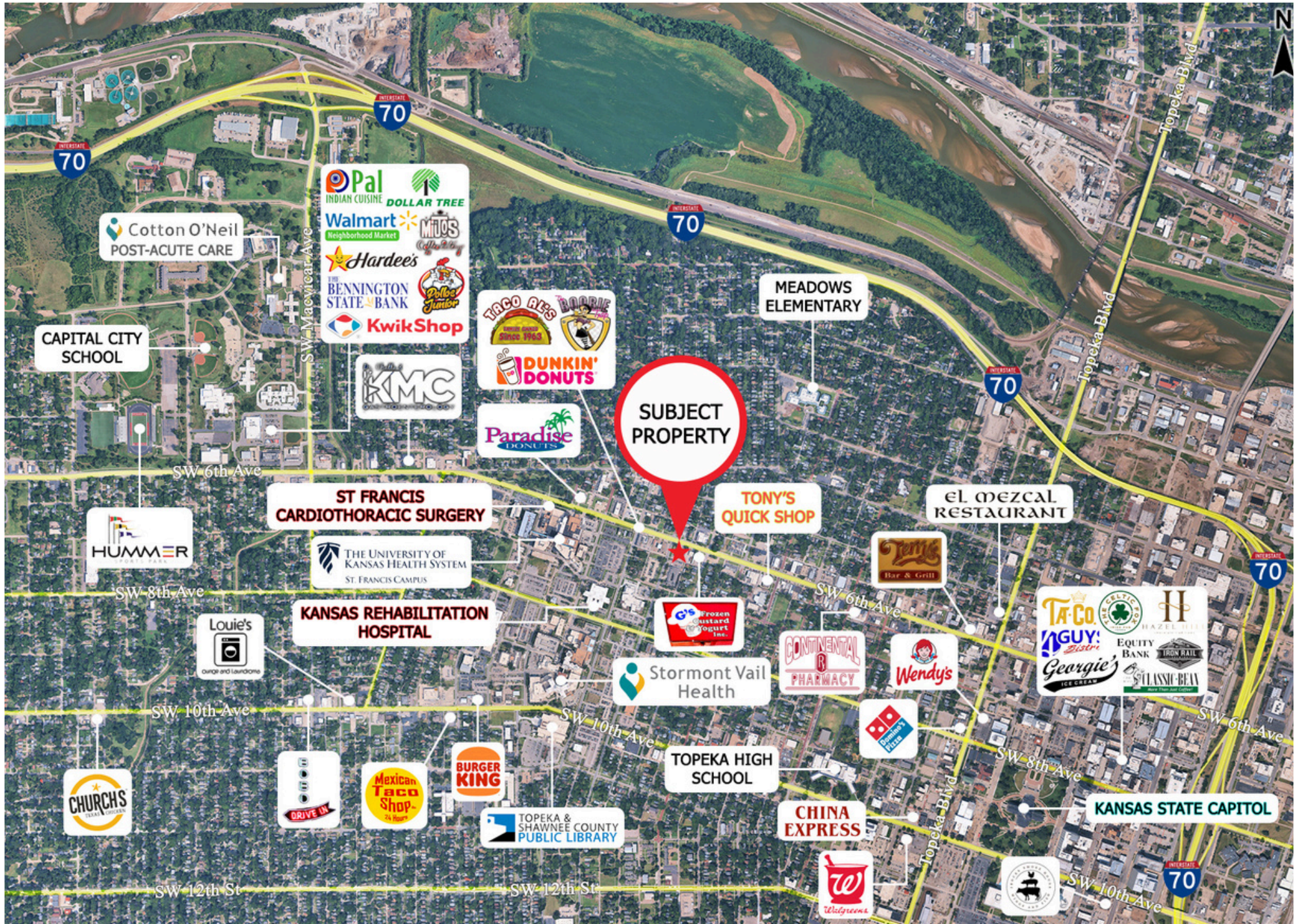
1315 SW 6TH AVENUE
TOPEKA, KS 66606



Pierre Heidrich
Broker Associate
816-210-7333
Pierre@KCMetroRealEstate.com

Jen Enderson
Broker Associate
816-668-0603
JenEnderson.Realtor@gmail.com





Cotton O'Neil
POST-ACUTE CARE

CAPITAL CITY
SCHOOL

Pal
INDIAN CUISINE
Walmart
Neighborhood Market
Hardee's
BENNINGTON
STATE BANK
KwikShop

KMC

TACO REX
DUNKIN'
DONUTS

Paradise
DONUTS

SUBJECT
PROPERTY

MEADOWS
ELEMENTARY

ST FRANCIS
CARDIOTHORACIC SURGERY

THE UNIVERSITY OF
KANSAS HEALTH SYSTEM
ST. FRANCIS CAMPUS

TONY'S
QUICK SHOP

el mezcal
RESTAURANT

HUMMER
SPORTS PARK

Louie's
Change and Laundromat

KANSAS REHABILITATION
HOSPITAL

Frozen
Custard
Yogurt Inc.

Stormont Vail
Health

CONTINENTAL
PHARMACY

Wendy's

Ta-Co
AGUY'S
Georgie's
EQUITY BANK
HAZEL HILL
IRON HILL
CLASSIC BEAN

SW 10th Ave

SW 10th Ave

SW 6th Ave

SW 8th Ave

SW 6th Ave

CHURCH'S
COAL FIRE

DRIVE IN

Mexican
Taco Shop

BURGER KING

TOPEKA &
SHAWNEE COUNTY
PUBLIC LIBRARY

TOPEKA HIGH
SCHOOL

CHINA
EXPRESS

Wendy's

KANSAS STATE CAPITOL

SW 12th St

SW 12th St

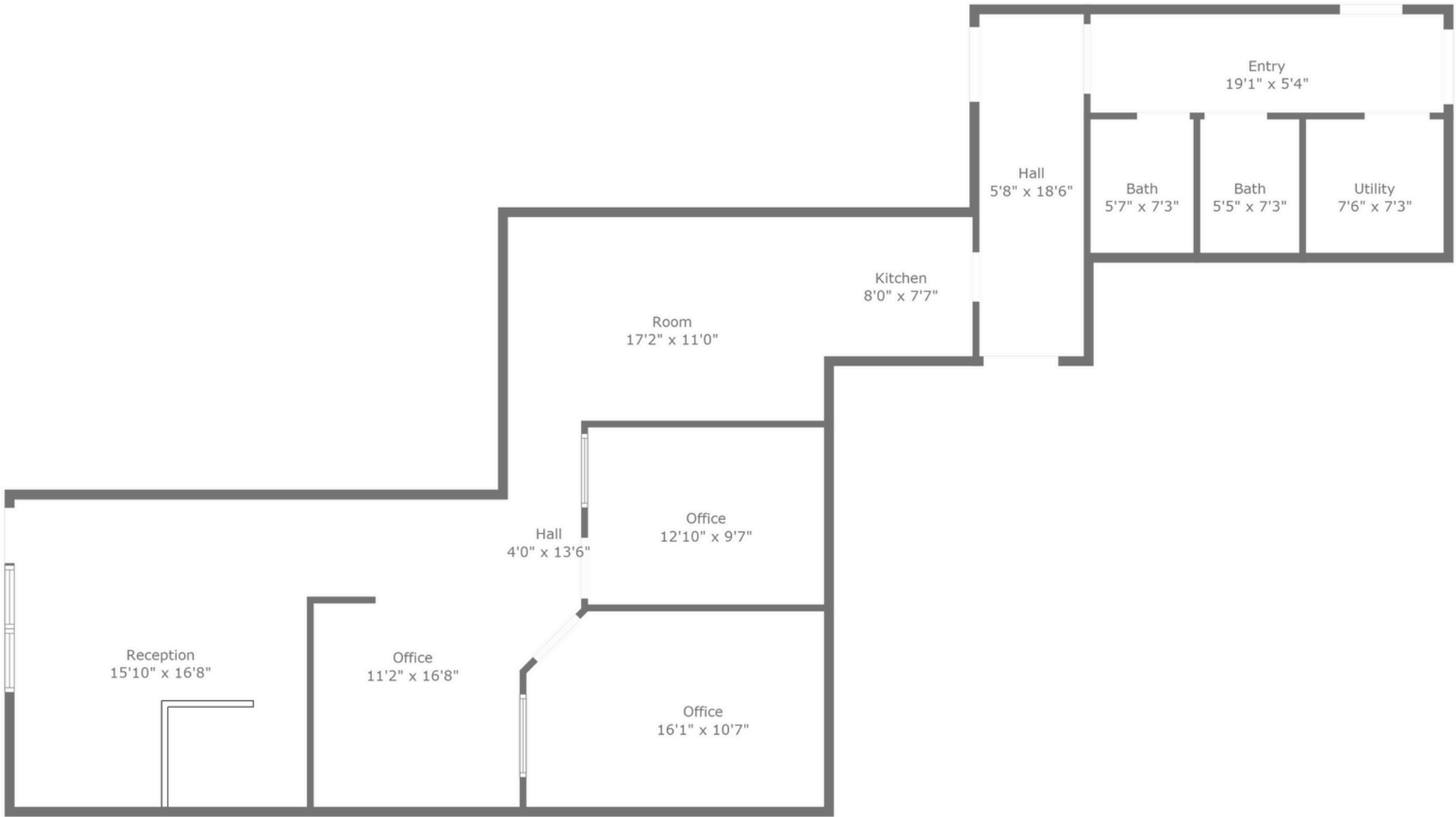
SW 10th Ave



TOTAL: 4429 sq. ft
FLOOR 1: 4429 sq. ft
WALLS: 148 sq. ft

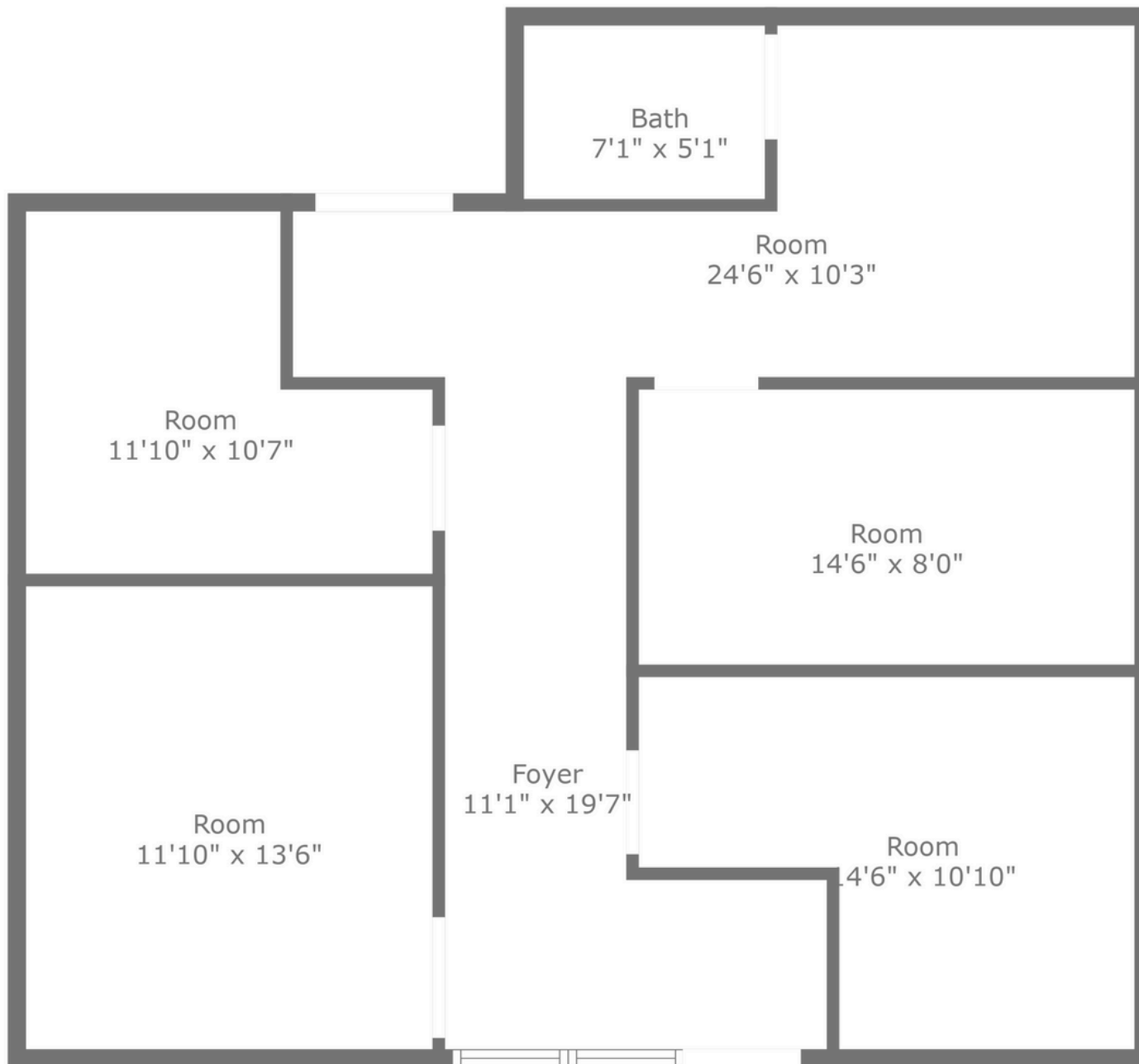
Floor Plan Created By Cubicasa App. Measurements Deemed Highly Reliable But Not Guaranteed.





TOTAL: 1355 sq. ft
FLOOR 1: 1355 sq. ft
EXCLUDED AREAS: UTILITY: 54 sq. ft
WALLS: 122 sq. ft





TOTAL: 885 sq. ft
FLOOR 1: 885 sq. ft

Floor Plan Created By Cubicasa App. Measurements Deemed Highly Reliable But Not Guaranteed.



INFORMATION CONTAINED HEREIN, WHILE NOT GUARANTEED, IS FROM SOURCES WE BELIEVE RELIABLE, HOWEVER, NO WARRANTY OR REPRESENTATION IS MADE AS TO THE ACCURACY THEREOF AND THE SAME ARE SUBMITTED SUBJECT TO ERRORS, OMISSIONS, CHANGES OF PRICE, RENTAL OR OTHER CONDITIONS PRIOR TO SALE, LEASE OR WITHDRAWAL. PRICE, TERMS AND CONDITIONS ARE SUBJECT TO CHANGE WITHOUT NOTICE. THE PURCHASER AND OR LESSEE SHOULD CONDUCT AN INDEPENDENT INVESTIGATION OF THE PROPERTY TO DETERMINE IF THE PROPERTY IS SUITABLE FOR THEIR INTENDED USE.

BROKER IS ACTING AS DESIGNATED LANDLORD'S/SELLER'S AGENT: A DESIGNATED LANDLORD'S/SELLER'S AGENT WORKS SOLELY ON BEHALF OF THE LANDLORD/SELLER TO PROMOTE THE INTERESTS OF THE LANDLORD/SELLER WITH THE UTMOST GOOD FAITH, LOYALTY AND FIDELITY. THE AGENT NEGOTIATES ON BEHALF OF AND ACTS AS THE ADVOCATE FOR THE LANDLORD/SELLER. PROPERTY IS EXCLUSIVELY MARKETING BY CHARTWELL REALTY. (751 NE ANDERSON LN, LEE'S SUMMIT, MO 64064)

Pierre Heidrich
Broker Associate
816-210-7333
Pierre@KCMetroRealEstate.com

Jen Enderson
Broker Associate
816-668-0603
JenEnderson.Realtor@gmail.com

751 NE Anderson
Lee's Summit, Mo 64064

6600 W. 95th St. Suite 102
Overland Park, Ks 66212

6312 Brookside Plaza
Kansas City, Mo 64113