



7001 Tower Road

7001 Tower Road
Denver, Colorado

Space Available:

Suite C: 8,759 SF

Lease Rate:

Negotiable

Parking Ratio:

5.0:1,000 SF

Office for Lease

Property Highlights

- Tower Road monument signage available
- Great location in Denver International Business Center
- Excellent access to Pena Blvd., I-70 and DIA
- Multiple amenities in close proximity

For information, please contact:

Tim Harrington

t 303-260-4245
tim.harrington@nrmk.com

Alan Polacsek

t 303-260-4247
alan.polacsek@nrmk.com

Eddie Kane

t 303-260-4315
edward.kane@nrmk.com

1800 Larimer Street, Suite 1700
Denver, CO 80202

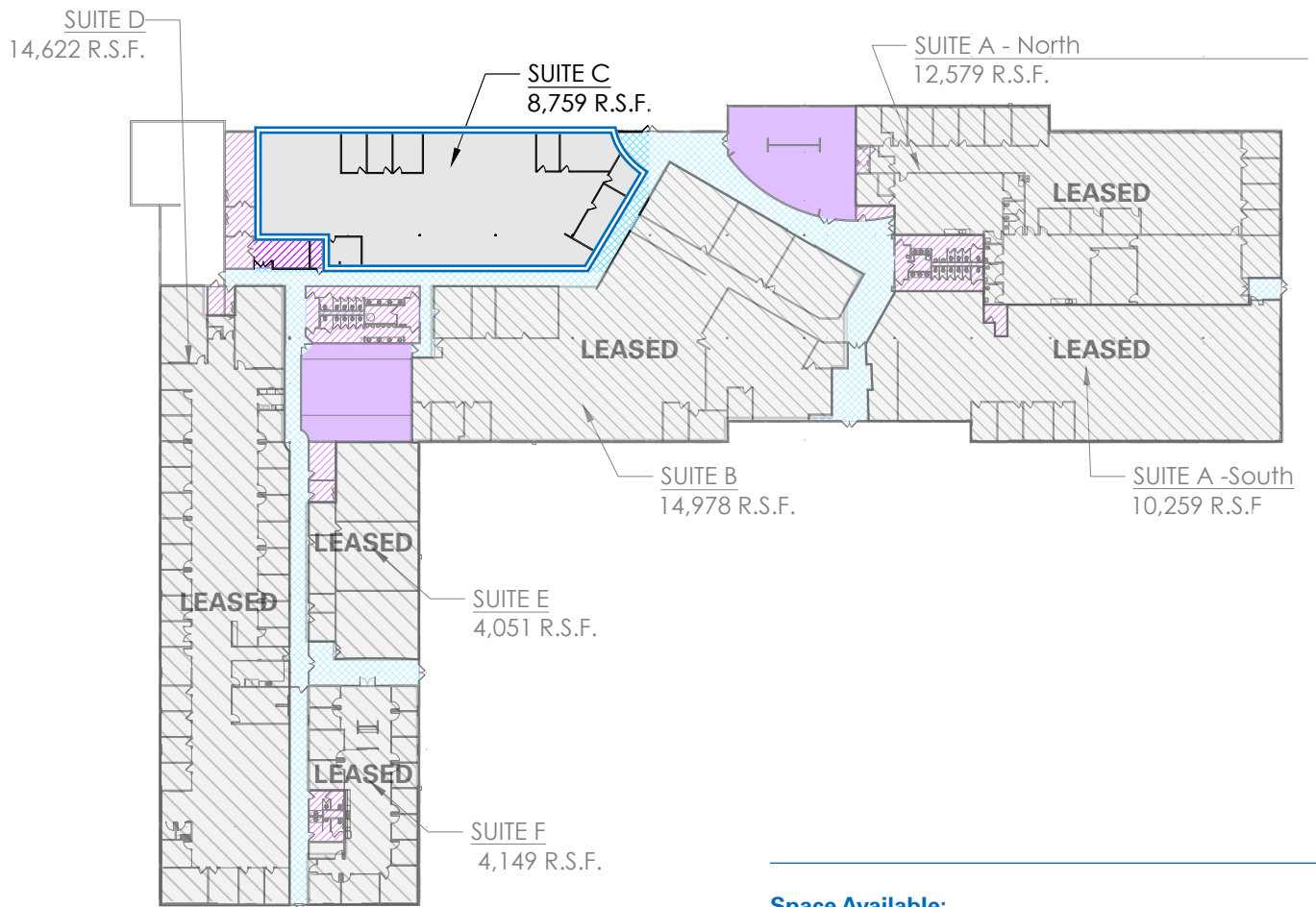
nrmk.com

NEWMARK

The information contained herein has been obtained from sources deemed reliable but has not been verified and no guarantee, warranty or representation, either express or implied, is made with respect to such information. Terms of sale or lease and availability are subject to change or withdrawal without notice.

7001 TOWER ROAD | DENVER, COLORADO

Floorplan: Suite C: 8,759 SF



Space Available:

Suite C: 8,759 SF

- Numerous restaurants and hotels in close proximity
- Located near Denver International Airport
- A Line accessibility at 61st and Pena Station; travel to Downtown Denver or DIA

7001 TOWER ROAD | DENVER, COLORADO



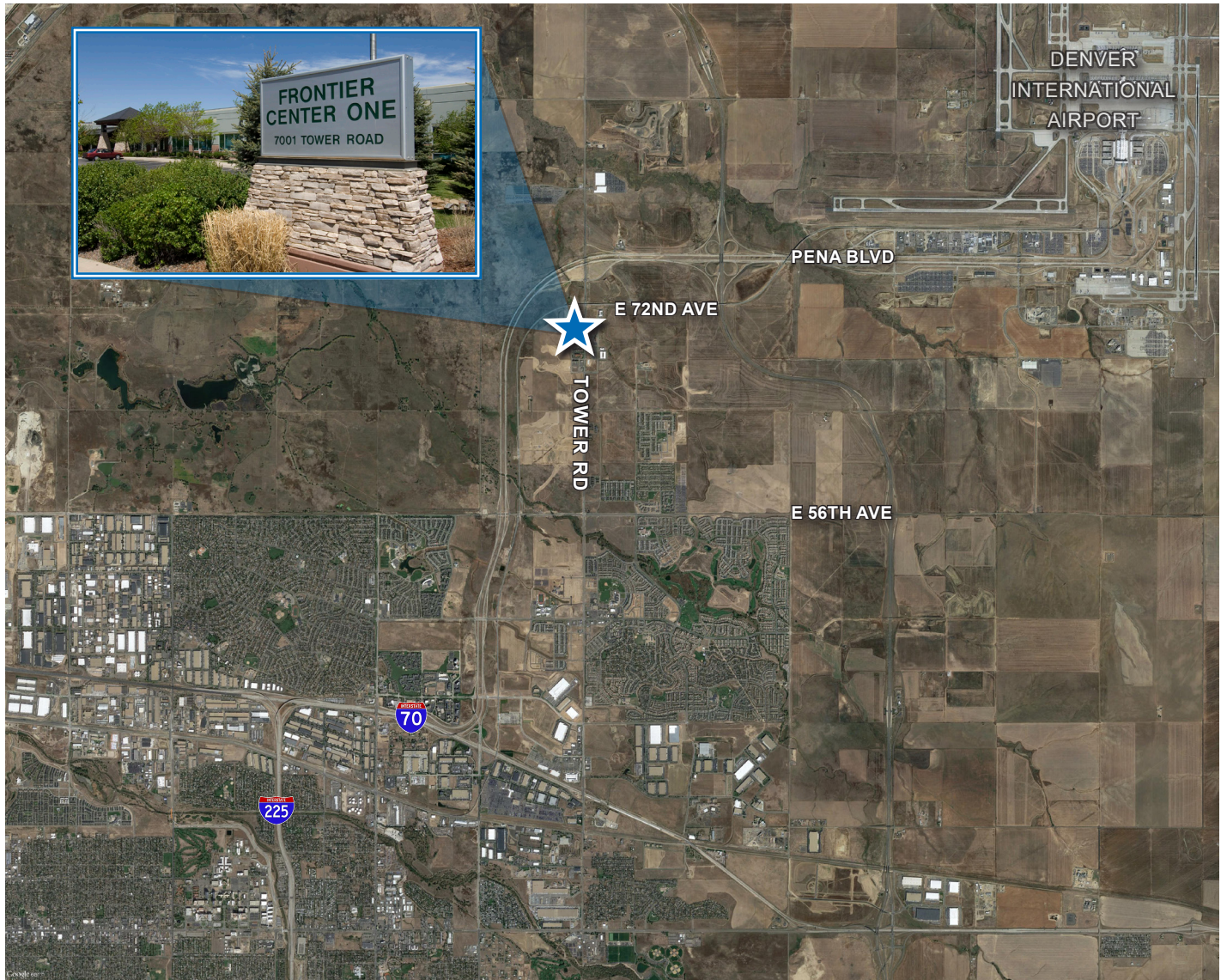
AERIAL VIEW



NEWMARK

7001 TOWER ROAD | DENVER, COLORADO

AREA LOCATION



CONTACT

Tim Harrington

t 303.260.4245

tim.harrington@nmrk.com

Alan Polacsek

t 303-260-4247

alan.polacsek@nmrk.com

Eddie Kane

t 303-260-4315

edward.kane@nmrk.com

nmrk.com

NEWMARK