

# ±7.28 ACRES OF RETAIL DEVELOPMENT LAND

JURUPA VALLEY, CA 92509

# FOR SALE



**DON KAZANJIAN**  
D 909.373.2929  
dkazanjan@lee-assoc.com  
DRE #00860886

**JOE LAHLOU**  
D 909.373.2710  
jlahlou@lee-assoc.com  
DRE #02221608

Lee & Associates - Ontario  
3535 Inland Empire Boulevard  
Ontario, CA 91764

**LEE & ASSOCIATES**  
COMMERCIAL REAL ESTATE SERVICES

All information furnished regarding property for sale, rental or financing is from sources deemed reliable, but no warranty or representation is made to the accuracy thereof and same is submitted to errors, omissions, change of price, rental or other conditions prior to sale, lease or financing or withdrawal without notice. No liability of any kind is to be imposed on the broker herein.

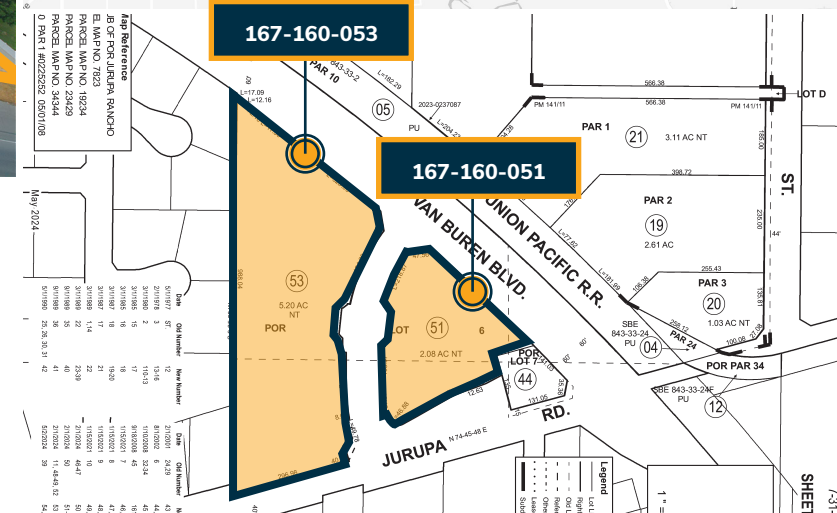
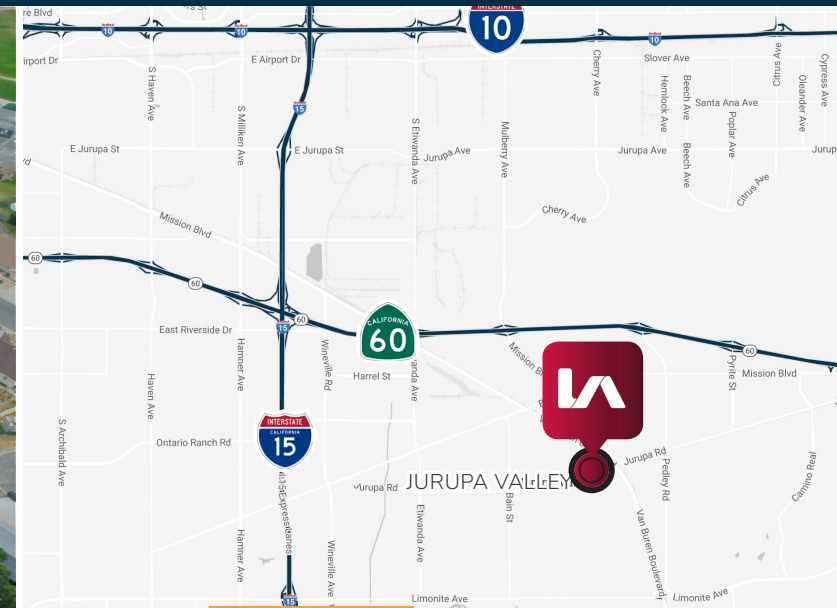
Corporate ID #00976995 | 909.989.7771 | lee-associates.com



# ±7.28 ACRES OF RETAIL DEVELOPMENT LAND

## JURUPA VALLEY, CA 92509

# FOR SALE



## FEATURES

- Ideal Commercial/Retail Development Opportunity
- Street Frontage on Van Buren Blvd (±35,000 Cars / Day)
- C-P-S, Commercial-Retail Zoning per city of Jurupa Valley (verify)
- ±5.2 acre parcel (167-160-053) & ±2.08 acre parcel (167-160-051) totaling ±7.28 acres

**DON KAZANJIAN**  
D 909.373.2929  
dkazanjan@lee-assoc.com  
DRE #00860886

**JOE LAHLOU**  
D 909.373.2710  
jlahlou@lee-assoc.com  
DRE #02221608

Lee & Associates - Ontario  
3535 Inland Empire Boulevard  
Ontario, CA 91764

**LEE & ASSOCIATES**  
COMMERCIAL REAL ESTATE SERVICES