

For Lease

2526 Naomi Street Burbank | CA



Presented By:

Randy Rohrer

818.244.3000

randy@pacwestonline.com

DRE#00672287

Scott Cox

818.244.3000

scott@pacwestonline.com

DRE#01070703

Christopher Rohrer

818.624.1180

chris@pacwestonline.com

DRE#02018754

Ron Rohrer

818.309.0628

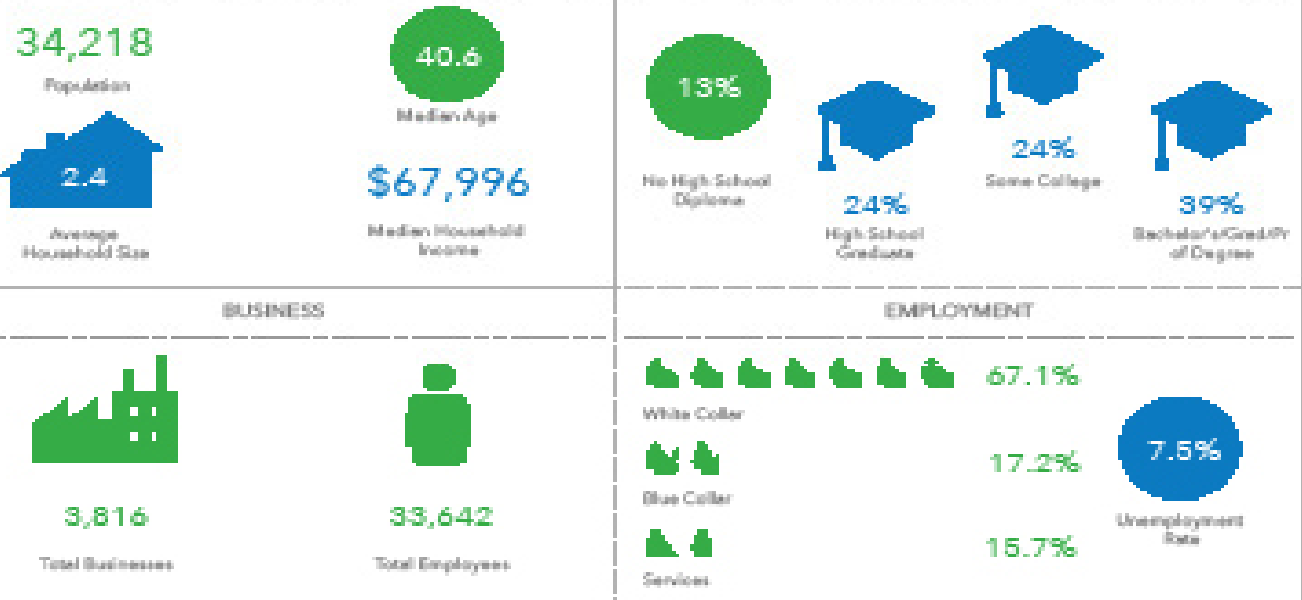
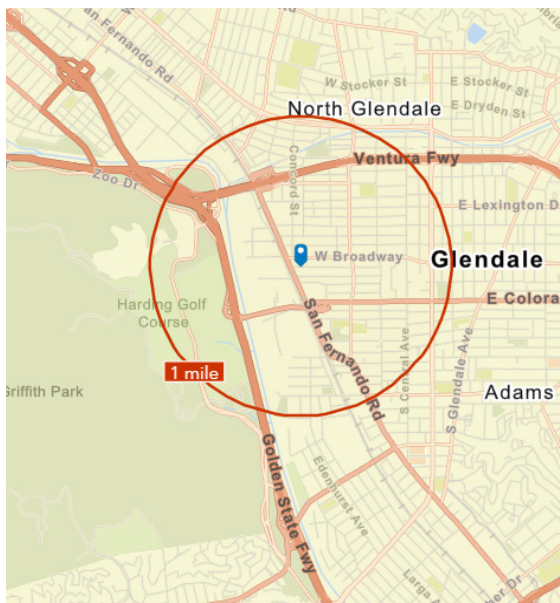
ron@pacwestonline.com

DRE#01918399



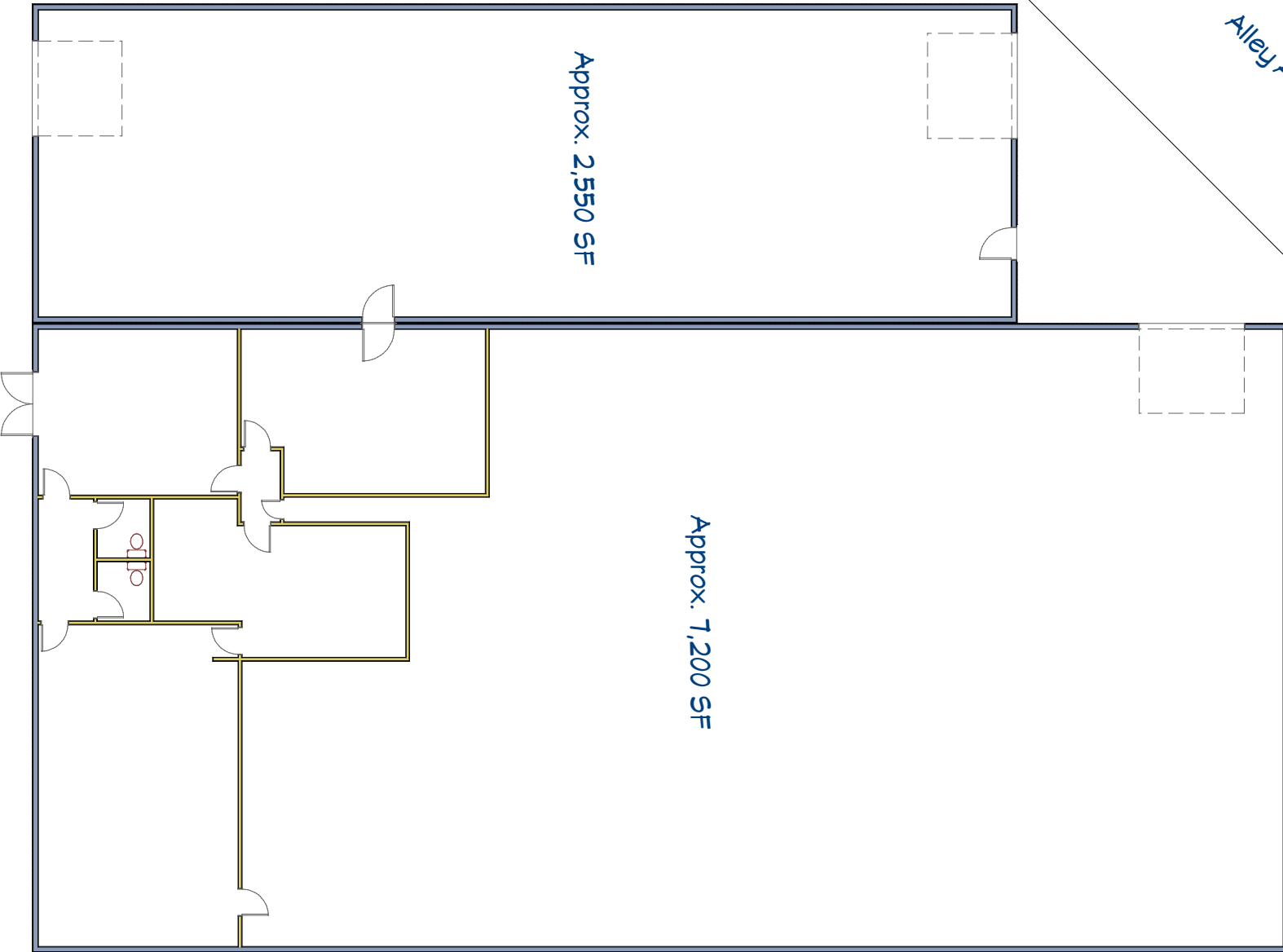
Property Information

Available SF:	7,200 SF	› Polished Concrete Floors
Asking Price:	\$13,320 (\$1.85/SF)	› Alley Access & Loading
Lease Type:	Industrial Gross	› Convenient Access to 5 Freeway
Power:	400 A; 240V; 3 Ph	› 14 Foot Clearance in Warehouse
Zoning:	M-1	› Air Conditioned Offices
Parking:	8+	› Bonus 2,550 SF Building (Parking)
Built:	1959	



The facts contained herein, while not guaranteed as to accuracy, are accurate to the best of our knowledge and belief.

Floor Plan



Approx. 2,550 SF

Approx. 7,200 SF

Alley Access

office

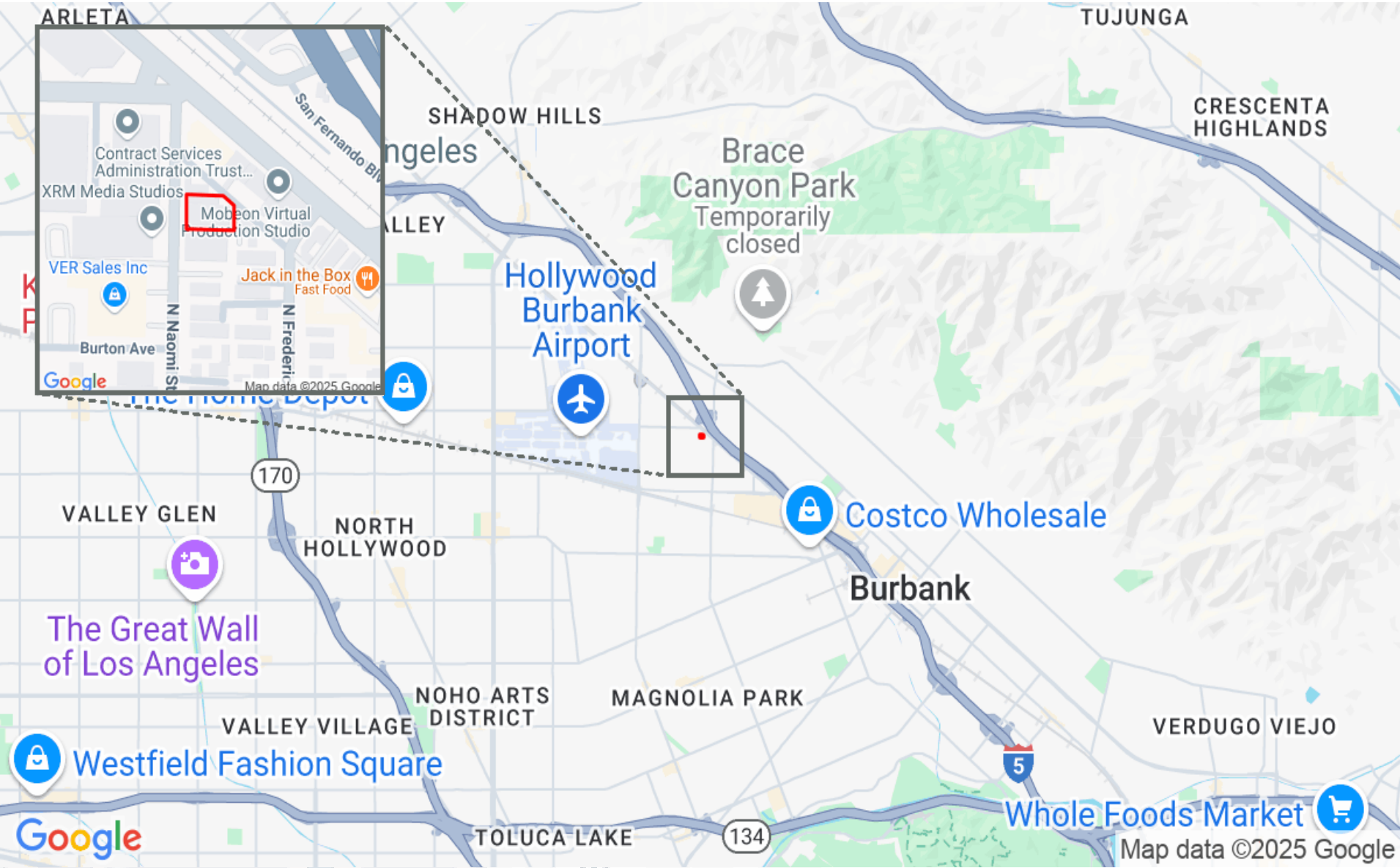
Map Location



2526 N Naomi St

Pacific West Business Properties, Inc.

6624 San Fernando Road Glendale, CA 91201 | 818-244-3000



Photos



Photos

