

FOR LEASE

Brodie Park Shopping Center



CARR 
Development, Inc.

joe@carrdevelopment.com
grant@carrdevelopment.com
5121 Bee Cave Rd., Suite 207
Austin, TX 78746
Phone: (512) 306-1771

FOR LEASE | BRODIE PARK | 9001 BRODIE LANE, AUSTIN, TX 78748



PROPERTY INFO

- Join Airrosti, Jet's Pizza, and Nanami Sushi at 9001 Brodie Lane in this 30,000 square foot retail development.
- Excellent location for retail, restaurant and medical space.
- Located on the southeast corner of Brodie Ln. and Davis Ln., approximately 1/4 mile North of Slaughter Ln. and approximately 1 mile South of William Cannon
- Lighted intersection

RETAIL SPACE AND PADS AVAILABLE

- Suite A-1: 3,080 square feet
- Suite C-6: 1,574 square feet
- Two fully developed pads - call for pricing

RATES | NNN

- Please call for current lease rates | \$12.33 psf NNN

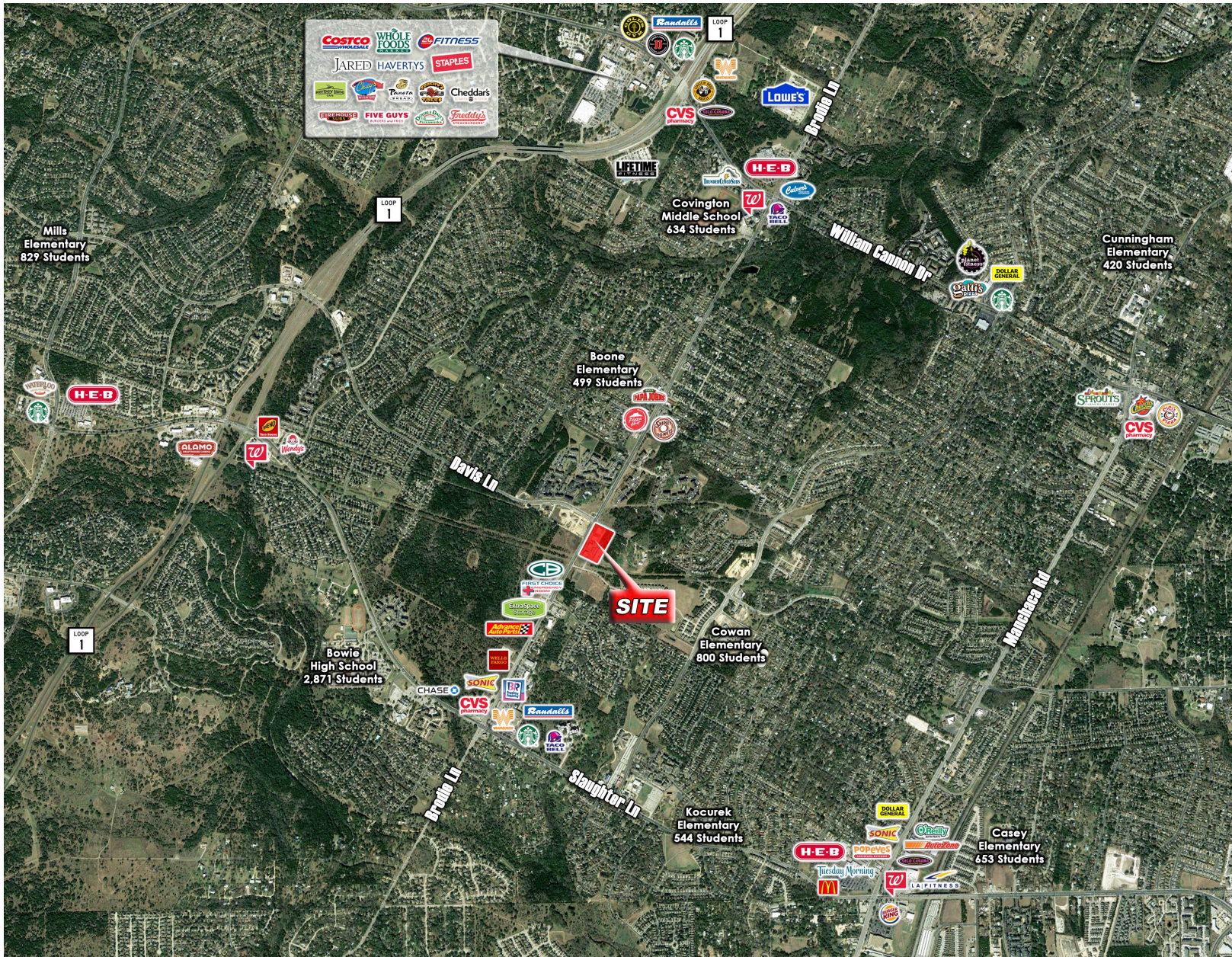
AREA RETAILERS AND RESTAURANTS



BRODIE PARK
SITE PLAN



FOR LEASE | BRODIE PARK | 9001 BRODIE LANE, AUSTIN, TX 78748



FOR LEASE | BRODIE PARK | 9001 BRODIE LANE, AUSTIN, TX 78748



5121 Bee Cave Rd., Ste. 207 Austin, TX 78746

www.carrdevelopment.com

CARR
Development, Inc. 

FOR LEASE | BRODIE PARK | 9001 BRODIE LANE, AUSTIN, TX 78748



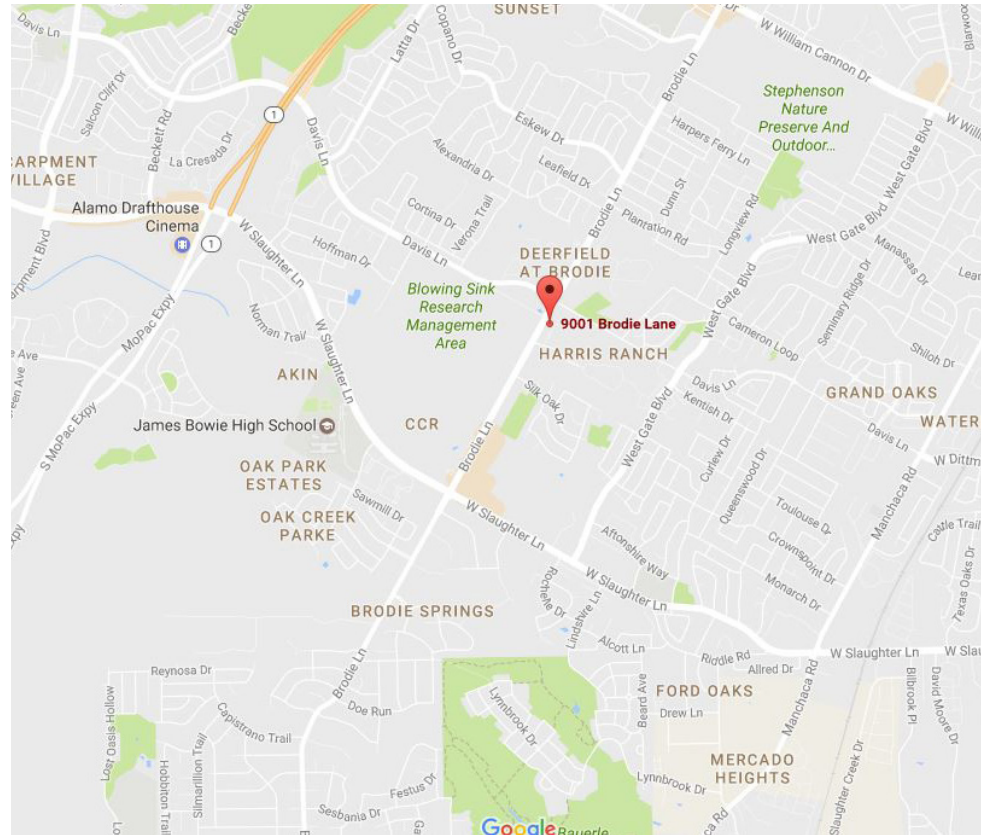
AREA INFO

2023 Demographics

	2 Mile	5 Mile	10 Mile
Total Population	47,102	233,953	616,531
2028 Population	47,845	242,286	647,277
Median Age	38.7	37.7	36.1
Avg HH Income	\$112,460	\$111,486	\$114,108
Households	19,840	98,051	250,995

Traffic counts

Davis Ln.	21,550 vpd
Deer Ln.	23,803 vpd



CONTACT US

Phone: (512) 306-1771

joe@carrdevelopment.com

grant@carrdevelopment.com

5121 Bee Cave Rd., Suite 207

Austin, TX 78746

5121 Bee Cave Rd., Ste. 207 Austin, TX 78746

www.carrdevelopment.com



