

For Lease

Warehouse Space For Lease In Aurora

601 W New York St, Aurora, IL 60506



Location Description

Located less than 3 miles south of I-88 and Route 31 Interchange.

Property Highlights

- Hard-to-find warehouse space with small office
- Heavy power available
- Heavy Industrial Zoning
- Ample parking
- Competitive Lease Rate
- 1 DID (Shared)
- 1 Interior Dock
- 12' Clear Height

Offering Summary

Lease Rate:	\$4.75 SF/yr (MG)
Available SF:	15,347 SF
Lot Size:	1.65 Acres
Building Size:	82,642 SF
Zoning:	M-2

Demographics	1 Mile	3 Miles	5 Miles
Total Households	5,674	35,993	74,249
Total Population	17,133	109,701	219,083
Average HH Income	\$87,262	\$89,554	\$114,079

Dan J. Dolan

630.885.5785

djdolan@dolanmurphy.com

Brian Dolan

630.774.8524

bdolan@dolanmurphy.com

Dolan & Murphy, Inc. | 630.801.8800 | 765 Orchard Avenue, Aurora, IL 60506

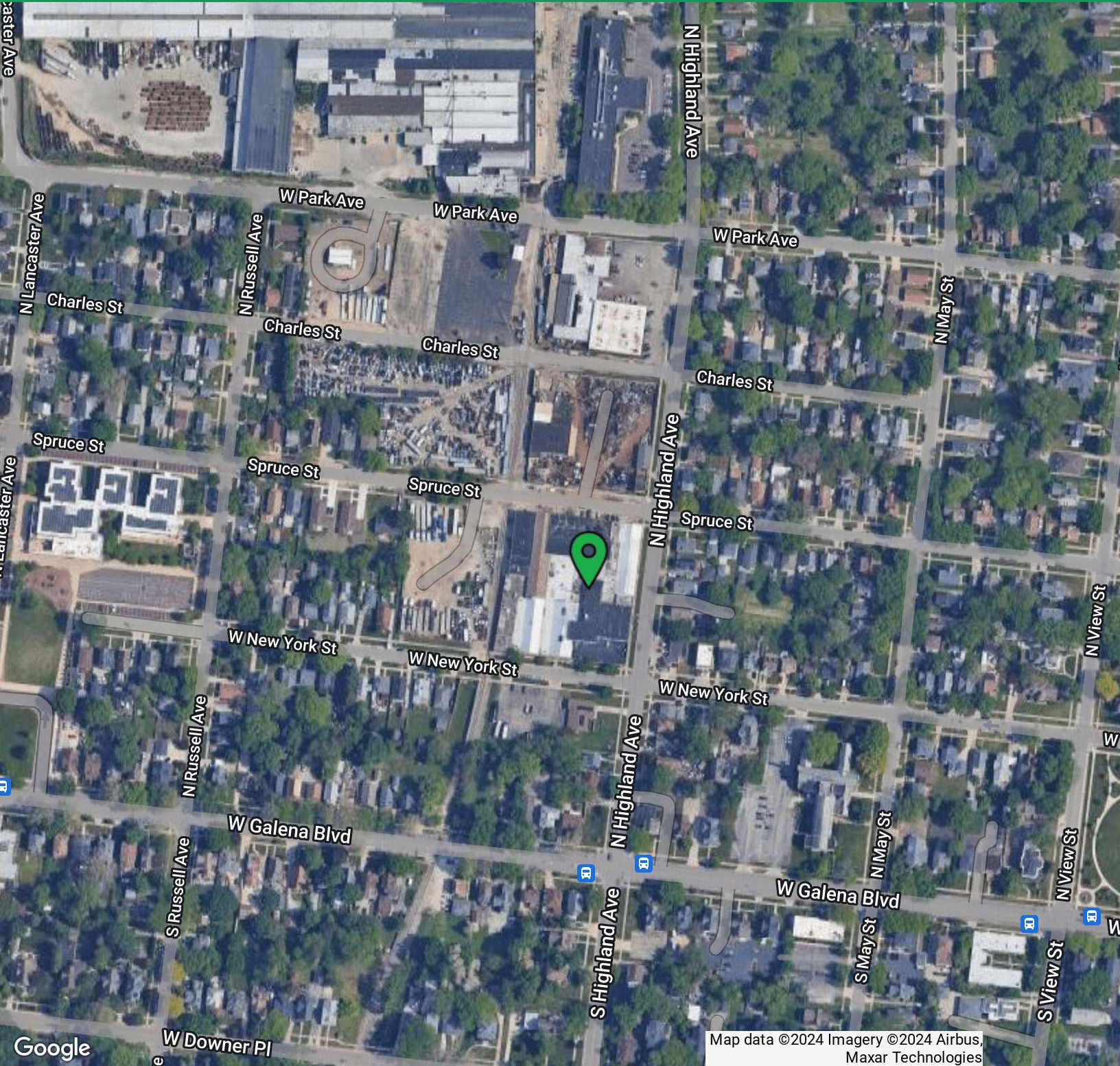
The information herein has been obtained from sources deemed reliable but is subject to verification, change, withdrawal without notice, and is submitted without any warranty as to accuracy.



For Lease

Warehouse Space For Lease In Aurora

601 W New York St, Aurora, IL 60506



Map data ©2024 Imagery ©2024 Airbus, Maxar Technologies

Dan J. Dolan
630.885.5785
djdolan@dolanmurphy.com

Brian Dolan
630.774.8524
bdolan@dolanmurphy.com

Dolan & Murphy, Inc. | 630.801.8800 | 765 Orchard Avenue, Aurora, IL 60506

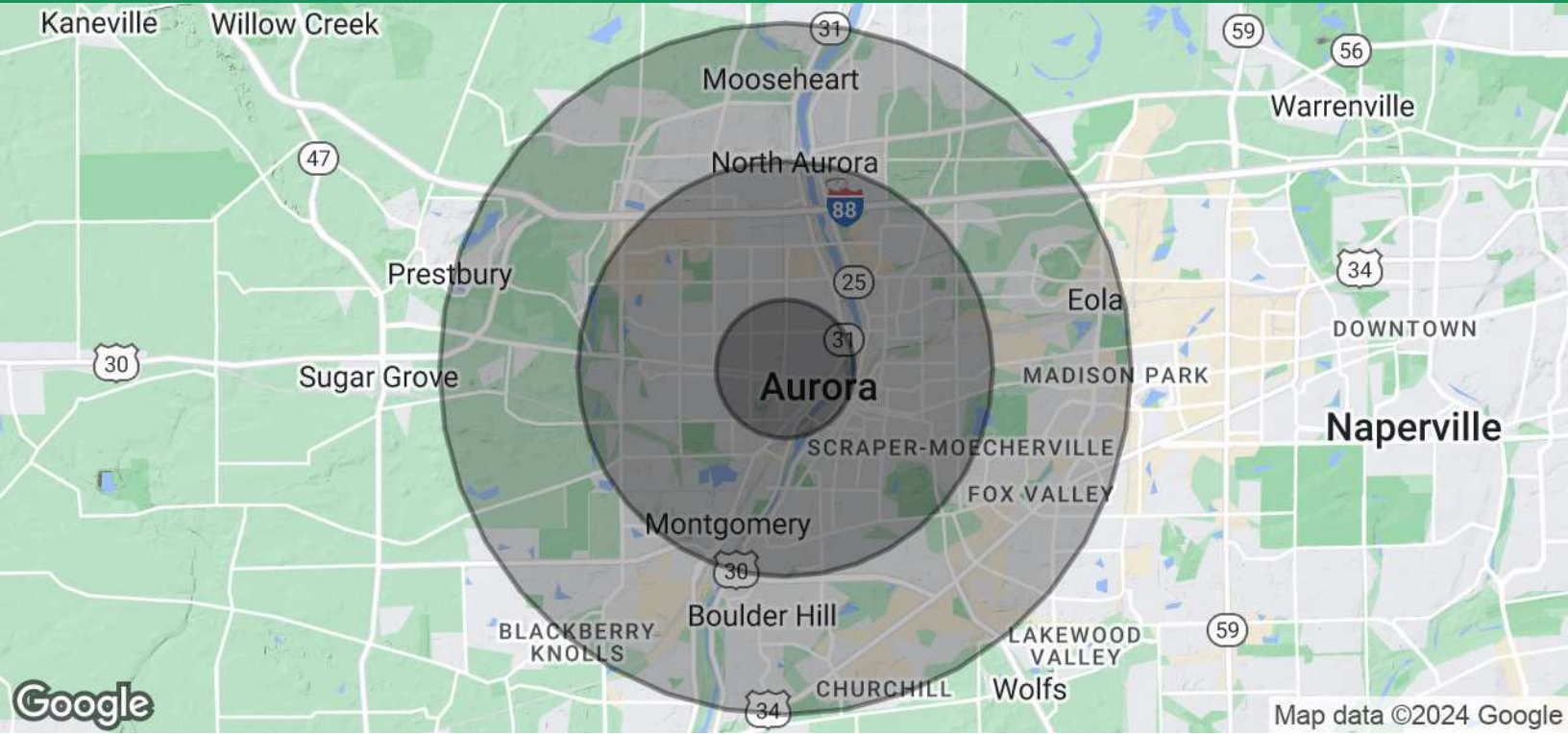
The information herein has been obtained from sources deemed reliable but is subject to verification, change, withdrawal without notice, and is submitted without any warranty as to accuracy.



For Lease

Warehouse Space For Lease In Aurora

601 W New York St, Aurora, IL 60506



Population

	1 Mile	3 Miles	5 Miles
Total Population	17,133	109,701	219,083
Average Age	36	37	37
Average Age (Male)	36	36	37
Average Age (Female)	37	38	38

Households & Income

	1 Mile	3 Miles	5 Miles
Total Households	5,674	35,993	74,249
# of Persons per HH	3	3	3
Average HH Income	\$87,262	\$89,554	\$114,079
Average House Value	\$223,252	\$218,817	\$280,408

Demographics data derived from AlphaMap

Dan J. Dolan

630.885.5785

djdolan@dolanmurphy.com

Brian Dolan

630.774.8524

bdolan@dolanmurphy.com



Dolan & Murphy, Inc. | 630.801.8800 | 765 Orchard Avenue, Aurora, IL 60506

The information herein has been obtained from sources deemed reliable but is subject to verification, change, withdrawal without notice, and is submitted without any warranty as to accuracy.