



Corporate Centre Shepherd

707-767 NORTH SHEPHERD DRIVE

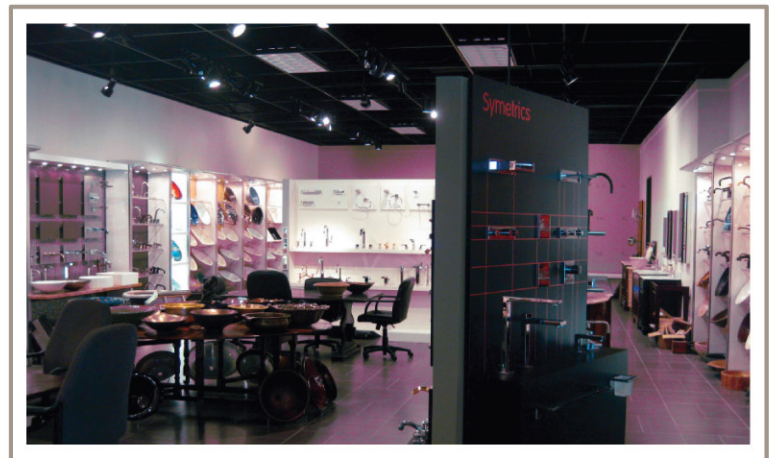
FENCED AND GATED PARK

Office

- Inner Loop Location
- Shepherd Address
- Class "A" Office Build-Outs

Warehouse

- 25' Clear Height
- 4 Grade-Level Doors (10' x 12')
- 9 Dock-High Doors (9' x 10')
- Fully Sprinklered



Jessica Walsh | jwalsh@wadevelops.com
713.461.9696 • www.wadevelops.com

Corporate Centre Shepherd

707-767 NORTH SHEPHERD DRIVE • HOUSTON



www.wadevelops.com



www.collierstexas.com