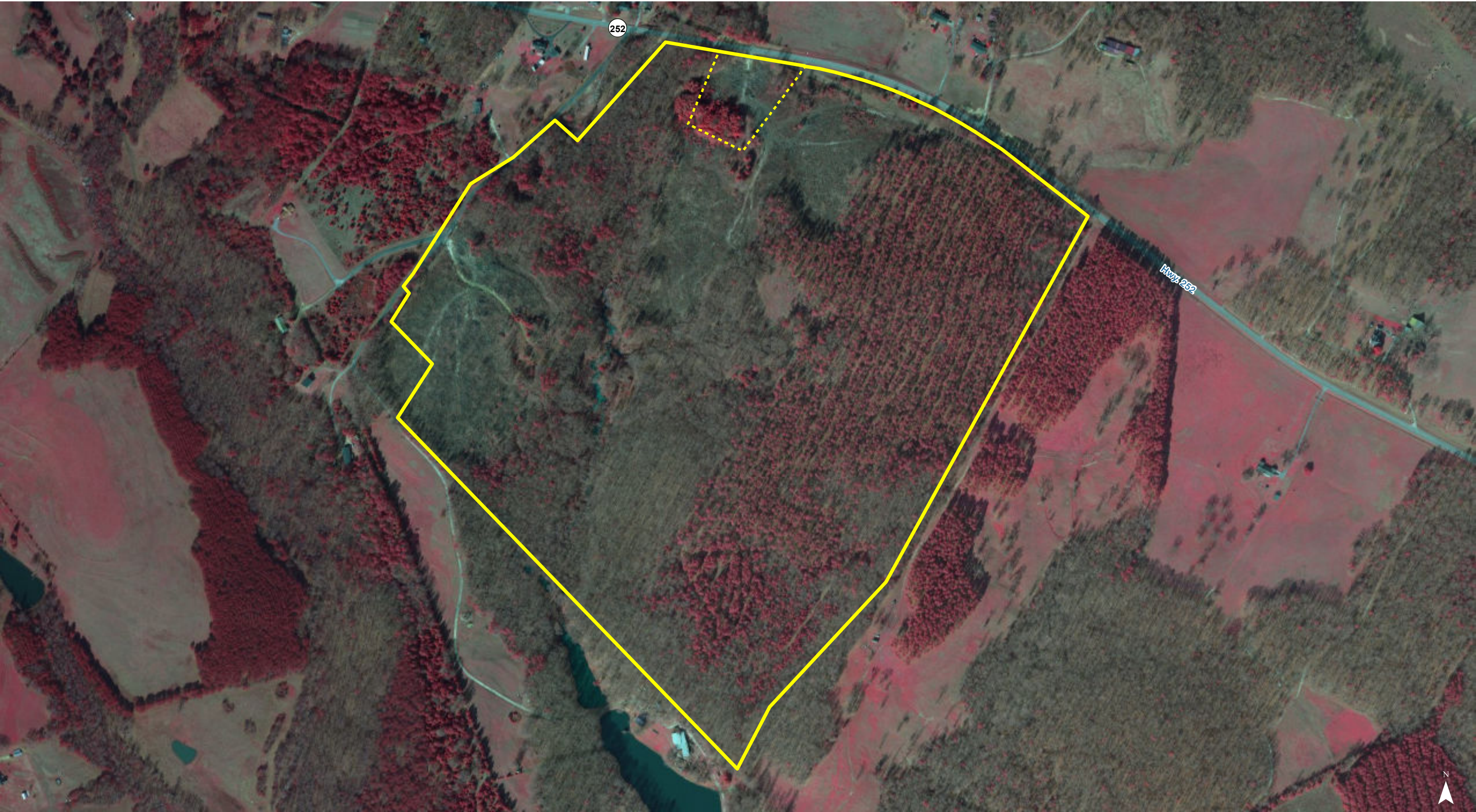




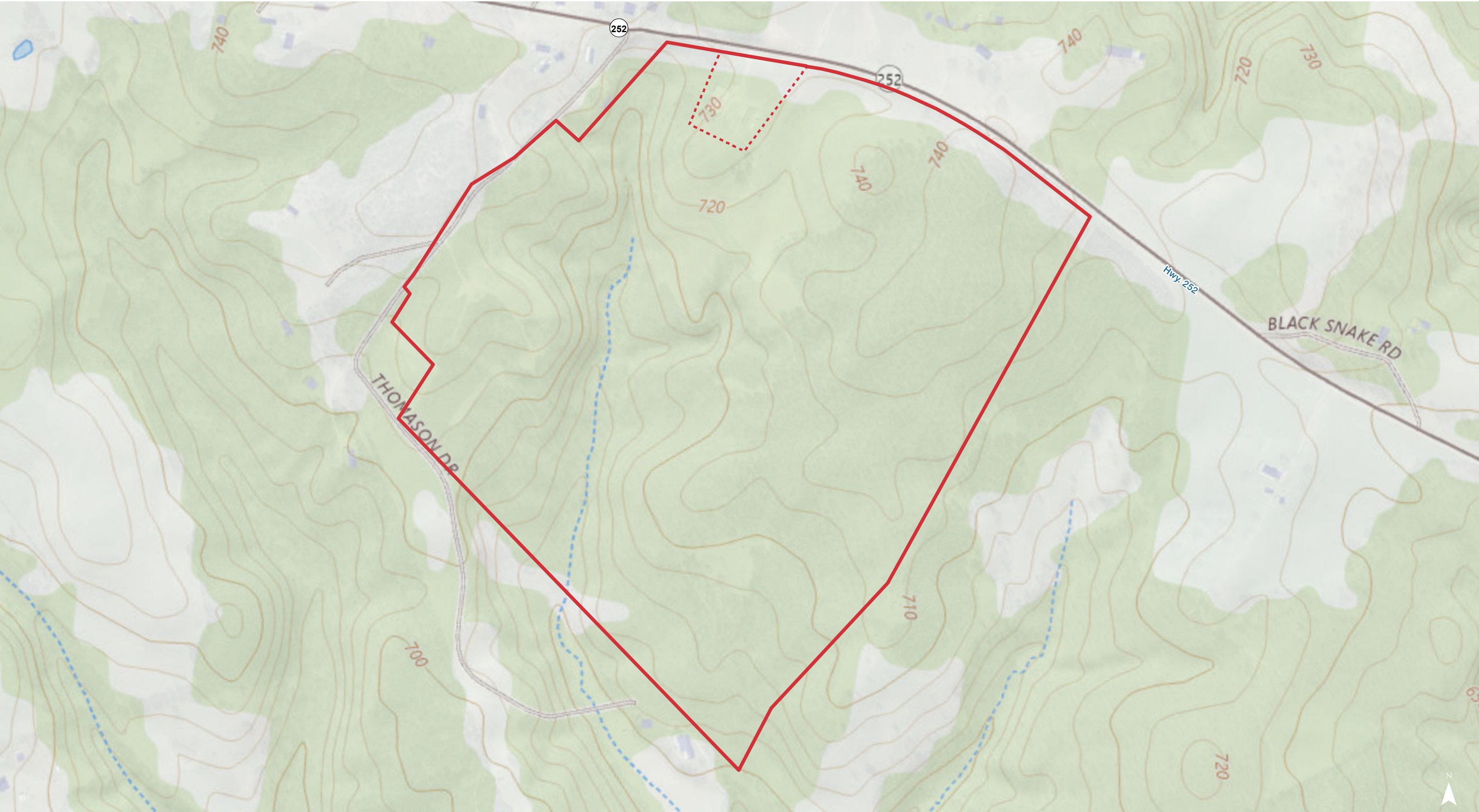
Map Updated: Thursday, May 1, 2025. This information submitted is not guaranteed. Although obtained from reliable sources, all information should be confirmed prior to use or reliance upon the information. This document may not be reproduced in whole or in part without the express written consent of NAI Columbia.



Map Updated: Thursday, May 1, 2025. This information submitted is not guaranteed. Although obtained from reliable sources, all information should be confirmed prior to use or reliance upon the information. This document may not be reproduced in whole or in part without the express written consent of NAI Columbia.



Map Updated: Thursday, May 1, 2025. This information submitted is not guaranteed. Although obtained from reliable sources, all information should be confirmed prior to use or reliance upon the information. This document may not be reproduced in whole or in part without the express written consent of NAI Columbia.



Map Updated: Thursday, May 1, 2025. This information submitted is not guaranteed. Although obtained from reliable sources, all information should be confirmed prior to use or reliance upon the information. This document may not be reproduced in whole or in part without the express written consent of NAI Columbia.



Map Updated: Thursday, May 1, 2025. This information submitted is not guaranteed. Although obtained from reliable sources, all information should be confirmed prior to use or reliance upon the information. This document may not be reproduced in whole or in part without the express written consent of NAI Columbia.



National Wetlands Inventory

Freshwater Emergent Wetland

Freshwater Forested/Shrub Wetland

Freshwater Pond

Lake

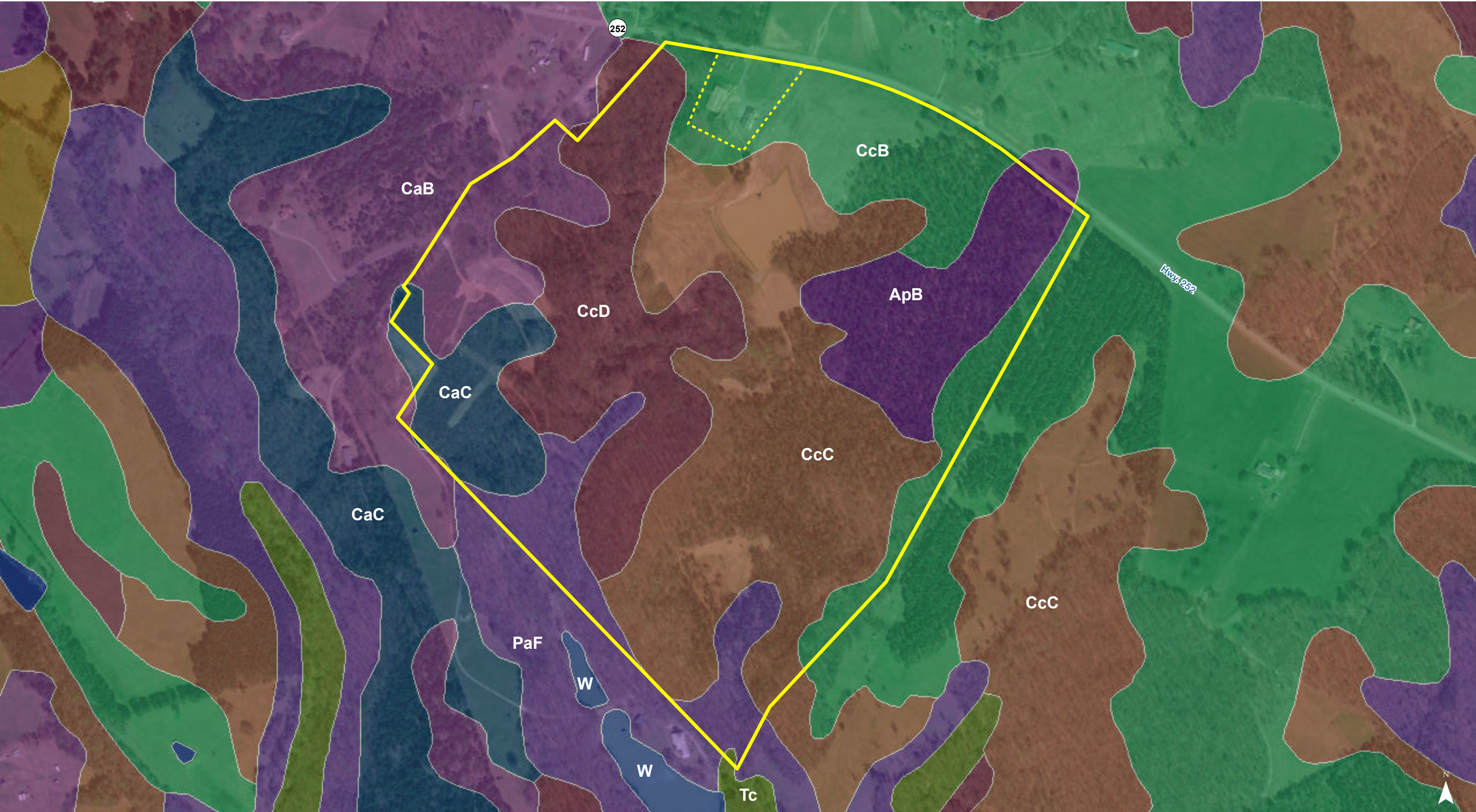
Riverine

Map Updated: Thursday, May 1, 2025. This information submitted is not guaranteed. Although obtained from reliable sources, all information should be confirmed prior to use or reliance upon the information. This document may not be reproduced in whole or in part without the express written consent of NAI Columbia.

NAI

Earle Furman

153.72 ± Acres
Hwy 252., Honea Path, SC 29654



Map Updated: Thursday, May 1, 2025. This information submitted is not guaranteed. Although obtained from reliable sources, all information should be confirmed prior to use or reliance upon the information. This document may not be reproduced in whole or in part without the express written consent of NAI Columbia.

Map Unit Description (Brief, Generated)

Abbeville County, South Carolina

[Minor map unit components are excluded from this report]

Map unit: ApB - Appling sandy loam, 2 to 6 percent slopes

Component: Appling (90%)

The Appling component makes up 90 percent of the map unit. Slopes are 2 to 6 percent. This component is on interfluves, piedmonts. The parent material consists of residuum weathered from gneiss and/or residuum weathered from granite. Depth to a root restrictive layer is greater than 60 inches. The natural drainage class is well drained. Water movement in the most restrictive layer is moderately high. Available water to a depth of 60 inches (or restricted depth) is moderate. Shrink-swell potential is low. This soil is not flooded. It is not ponded. There is no zone of water saturation within a depth of 72 inches. Organic matter content in the surface horizon is about 1 percent. This component is in the F136XY820GA Acidic upland forest, moist ecological site. Nonirrigated land capability classification is 2e. This soil does not meet hydric criteria.

Map unit: CaB - Cataula sandy loam, 2 to 6 percent slopes

Component: Cataula (95%)

The Cataula component makes up 95 percent of the map unit. Slopes are 2 to 6 percent. This component is on interfluves on southern piedmonts. The parent material consists of residuum weathered from gneiss and/or residuum weathered from granite. Depth to a root restrictive layer, fragipan, is 20 to 31 inches. The natural drainage class is moderately well drained. Water movement in the most restrictive layer is moderately low. Available water to a depth of 60 inches (or restricted depth) is low. Shrink-swell potential is low. This soil is not flooded. It is not ponded. A seasonal zone of water saturation is at 25 inches during January, February, March, December. Organic matter content in the surface horizon is about 1 percent. This component is in the F136XY810SC Acidic upland forest, seasonally wet ecological site. Nonirrigated land capability classification is 3e. This soil does not meet hydric criteria.

Map unit: CaC - Cataula sandy loam, 6 to 10 percent slopes

Component: Cataula (85%)

The Cataula component makes up 85 percent of the map unit. Slopes are 6 to 10 percent. This component is on hillslopes on Piedmont uplands. The parent material consists of clayey residuum weathered from granite, gneiss, or schist. Depth to a root restrictive layer, fragipan, is 15 to 40 inches. The natural drainage class is moderately well drained. Water movement in the most restrictive layer is moderately low. Available water to a depth of 60 inches (or restricted depth) is low. Shrink-swell potential is low. This soil is not flooded. It is not ponded. A seasonal zone of water saturation is at 35 inches during January, February, March, April, December. Organic matter content in the surface horizon is about 1 percent. This component is in the F136XY810SC Acidic upland forest, seasonally wet ecological site. Nonirrigated land capability classification is 4e. This soil does not meet hydric criteria.

Abbeville County, South Carolina

[Minor map unit components are excluded from this report]

Map unit: CcC - Cecil sandy loam, 6 to 10 percent slopes

Component: Cecil (88%)

The Cecil component makes up 88 percent of the map unit. Slopes are 6 to 10 percent. This component is on interfluves on southern piedmonts. The parent material consists of residuum weathered from granite and/or residuum weathered from gneiss. Depth to a root restrictive layer is greater than 60 inches. The natural drainage class is well drained. Water movement in the most restrictive layer is moderately high. Available water to a depth of 60 inches (or restricted depth) is moderate. Shrink-swell potential is low. This soil is not flooded. It is not ponded. There is no zone of water saturation within a depth of 72 inches. Organic matter content in the surface horizon is about 1 percent. This component is in the F136XY820GA Acidic upland forest, moist ecological site. Nonirrigated land capability classification is 3e. This soil does not meet hydric criteria.

Map unit: CcD - Cecil-Cataula complex, 10 to 15 percent slopes, moderately eroded

Component: Cecil, moderately eroded (65%)

The Cecil, moderately eroded component makes up 65 percent of the map unit. Slopes are 10 to 15 percent. This component is on interfluves on southern piedmonts. The parent material consists of residuum weathered from granite and/or residuum weathered from gneiss. Depth to a root restrictive layer is greater than 60 inches. The natural drainage class is well drained. Water movement in the most restrictive layer is moderately high. Available water to a depth of 60 inches (or restricted depth) is high. Shrink-swell potential is low. This soil is not flooded. It is not ponded. There is no zone of water saturation within a depth of 72 inches. Organic matter content in the surface horizon is about 1 percent. This component is in the F136XY820GA Acidic upland forest, moist ecological site. Nonirrigated land capability classification is 4e. This soil does not meet hydric criteria.

Component: Cataula, moderately eroded (25%)

The Cataula, moderately eroded component makes up 25 percent of the map unit. Slopes are 10 to 15 percent. This component is on interfluves on southern piedmonts. The parent material consists of residuum weathered from granite and/or residuum weathered from gneiss. Depth to a root restrictive layer, fragipan, is 20 to 43 inches. The natural drainage class is moderately well drained. Water movement in the most restrictive layer is moderately low. Available water to a depth of 60 inches (or restricted depth) is low. Shrink-swell potential is low. This soil is not flooded. It is not ponded. A seasonal zone of water saturation is at 33 inches during January, February, March, December. Organic matter content in the surface horizon is about 1 percent. This component is in the F136XY810SC Acidic upland forest, seasonally wet ecological site. Nonirrigated land capability classification is 6e. This soil does not meet hydric criteria.

Map Unit Description (Brief, Generated)

Abbeville County, South Carolina

Map unit: PaF - Pacolet sandy loam, 15 to 40 percent slopes

Component: Pacolet (92%)

The Pacolet component makes up 92 percent of the map unit. Slopes are 15 to 40 percent. This component is on interfluves on southern piedmonts. The parent material consists of residuum weathered from granite and/or residuum weathered from gneiss. Depth to a root restrictive layer is greater than 60 inches. The natural drainage class is well drained. Water movement in the most restrictive layer is moderately high. Available water to a depth of 60 inches (or restricted depth) is moderate. Shrink-swell potential is low. This soil is not flooded. It is not ponded. There is no zone of water saturation within a depth of 72 inches. Organic matter content in the surface horizon is about 1 percent. This component is in the F136XY820GA Acidic upland forest, moist ecological site. Nonirrigated land capability classification is 7e. This soil does not meet hydric criteria.

Map unit: Tc - Toccoa sandy loam

Component: Toccoa (85%)

The Toccoa component makes up 85 percent of the map unit. Slopes are 0 to 2 percent. This component is on flood plains on Piedmont river valleys. The parent material consists of loamy alluvium. Depth to a root restrictive layer is greater than 60 inches. The natural drainage class is moderately well drained. Water movement in the most restrictive layer is high. Available water to a depth of 60 inches (or restricted depth) is moderate. Shrink-swell potential is low. This soil is occasionally flooded. It is not ponded. A seasonal zone of water saturation is at 45 inches during January, February, March, April, December. Organic matter content in the surface horizon is about 2 percent. This component is in the F136XY620GA Flood plain forest, moist ecological site. Nonirrigated land capability classification is 2w. This soil does not meet hydric criteria.

Map unit: W - Water

Component: Water (100%)

Generated brief soil descriptions are created for major soil components. The Water is a miscellaneous area.