

FULLY EQUIPPED AUTO REPAIR & BODY SHOP | ESTABLISHED, HIGH-TRAFFIC LOCATION

7215 N SHEPHERD DR, HOUSTON, TX 77091

PROPERTY SUMMARY | AUTO SHOP, FLEX, WAREHOUSE PROPERTY

FOR SALE: \$1,400,000



PROPERTY DESCRIPTION

Located on the north side of town in a high-traffic, bustling area, this fully equipped auto repair and body shop presents an exceptional opportunity for a new owner. Well-established and meticulously maintained, this business has proudly served the community for many years and is now available for sale.

This is a rare chance to acquire a profitable, fully outfitted auto repair and body shop with everything already in place. Whether you're an experienced mechanic ready to operate your own shop or an investor seeking a strong, income-producing business, this turnkey operation provides all the tools, equipment, and setup needed to step in and succeed from day one.

PROPERTY HIGHLIGHTS

- Dual-Service Facility
- Fully functioning as both a mechanic shop and a body shop, providing customers with a convenient, all-in-one automotive service center.
- Included Equipment

OFFERING SUMMARY

Sale Price:	\$1,400,000
Number of Units:	3
Lot Size:	18,621 SF
Building Size:	4,000 SF

DEMOGRAPHICS	0.3 MILES	0.5 MILES	1 MILE
Total Households	481	1,079	4,577
Total Population	1,202	2,861	13,075
Average HH Income	\$38,733	\$41,707	\$48,004

ADAM OLSEN, CCIM  
713.614.2670  
adam@thecommercialprofessionals.com

THE COMMERCIAL  
PROFESSIONALS  
To Schedule A Showing Call 713.538.1638

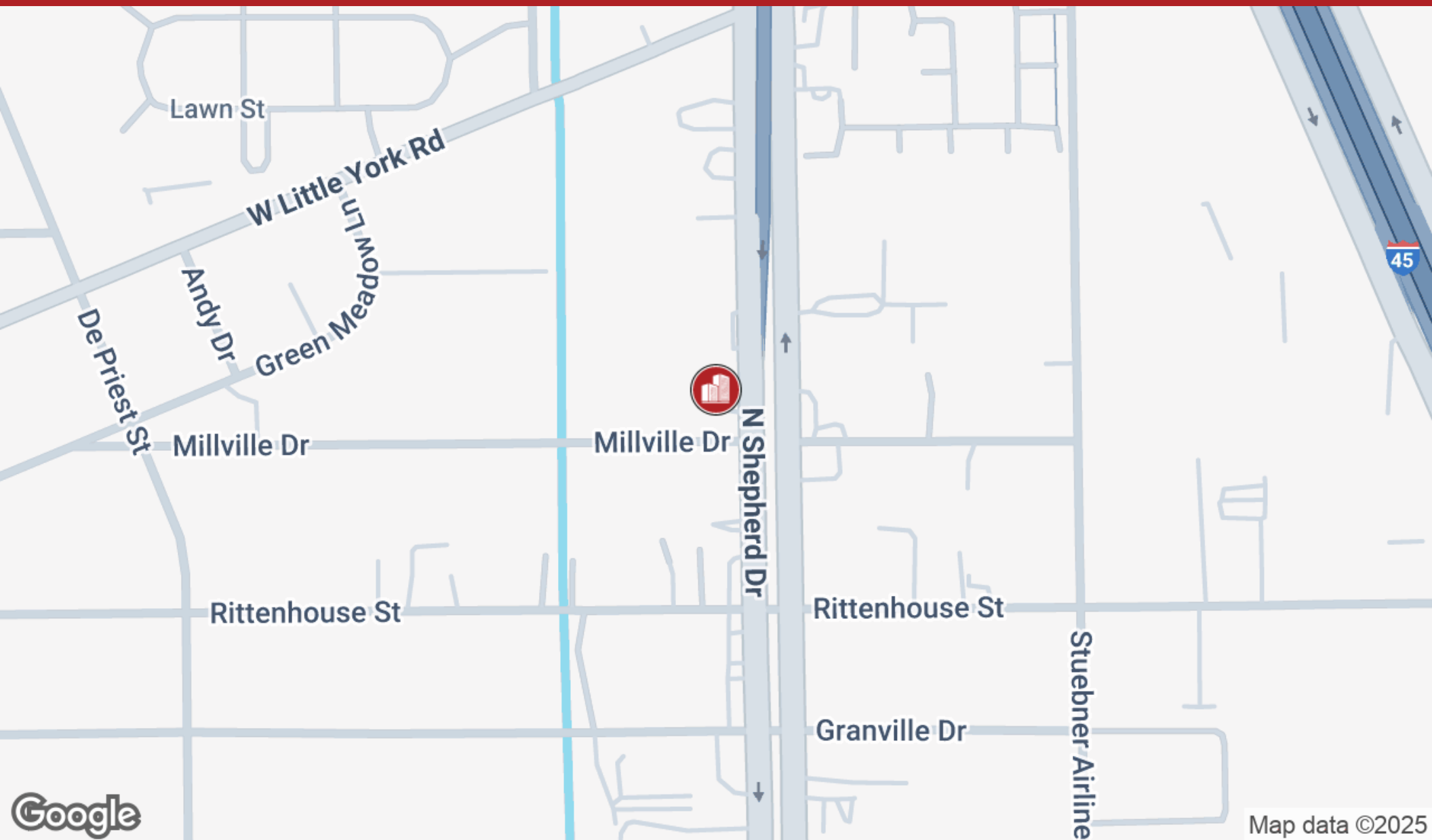
THE COMMERCIAL PROFESSIONALS  
713.614.2670  
thecommercialprofessionals.com  
2800 Post Oak Blvd, Suite 4100, Houston, TX 77056

# FULLY EQUIPPED AUTO REPAIR & BODY SHOP | ESTABLISHED, HIGH-TRAFFIC LOCATION

7215 N SHEPHERD DR, HOUSTON, TX 77091

LOCATION MAP | AUTO SHOP, FLEX, WAREHOUSE PROPERTY

FOR SALE: \$1,400,000



**ADAM OLSEN, CCIM**

713.614.2670

adam@thecommercialprofessionals.com

**THE COMMERCIAL  
PROFESSIONALS**

To Schedule A Showing Call 713.538.1638

**THE COMMERCIAL PROFESSIONALS**

713.614.2670

thecommercialprofessionals.com

2800 Post Oak Blvd, Suite 4100, Houston, TX 77056

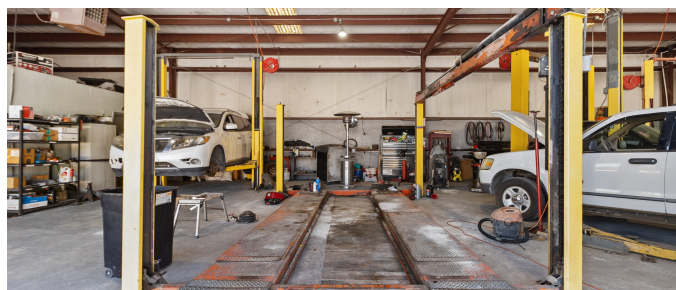
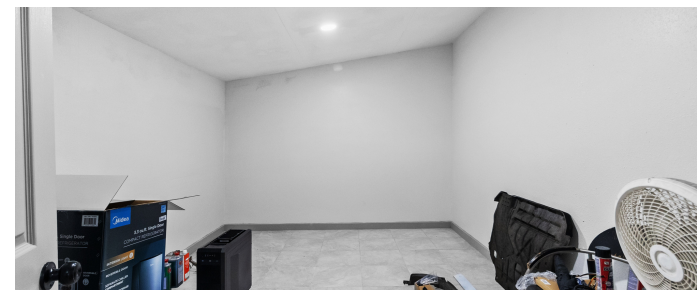
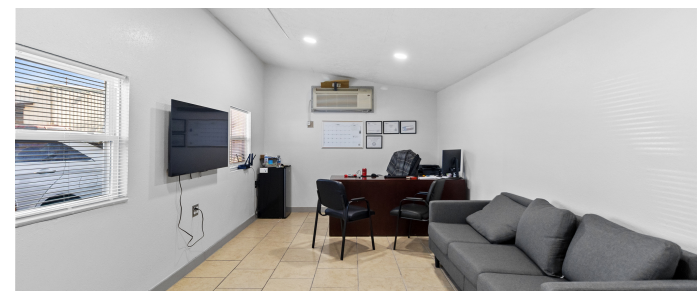
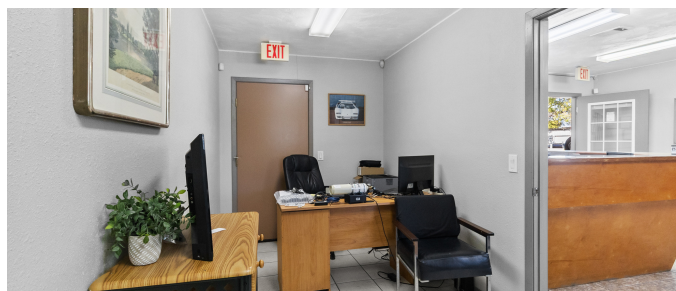
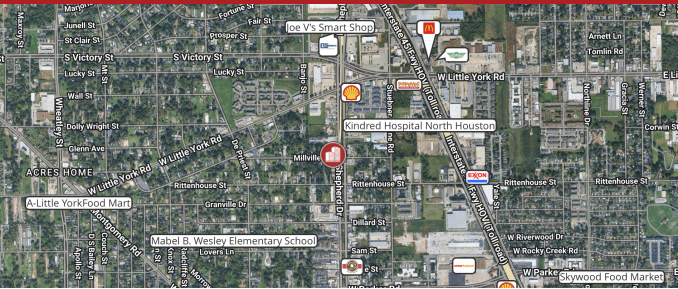


# FULLY EQUIPPED AUTO REPAIR & BODY SHOP | ESTABLISHED, HIGH-TRAFFIC LOCATION

7215 N SHEPHERD DR, HOUSTON, TX 77091

ADDITIONAL PHOTOS | AUTO SHOP, FLEX, WAREHOUSE PROPERTY

FOR SALE: \$1,400,000



ADAM OLSEN, CCIM

713.614.2670

adam@thecommercialprofessionals.com

**THE COMMERCIAL PROFESSIONALS**

To Schedule A Showing Call 713.538.1638

**THE COMMERCIAL PROFESSIONALS**

713.614.2670

thecommercialprofessionals.com

2800 Post Oak Blvd, Suite 4100, Houston, TX 77056



# FULLY EQUIPPED AUTO REPAIR & BODY SHOP | ESTABLISHED, HIGH-TRAFFIC LOCATION

7215 N SHEPHERD DR, HOUSTON, TX 77091

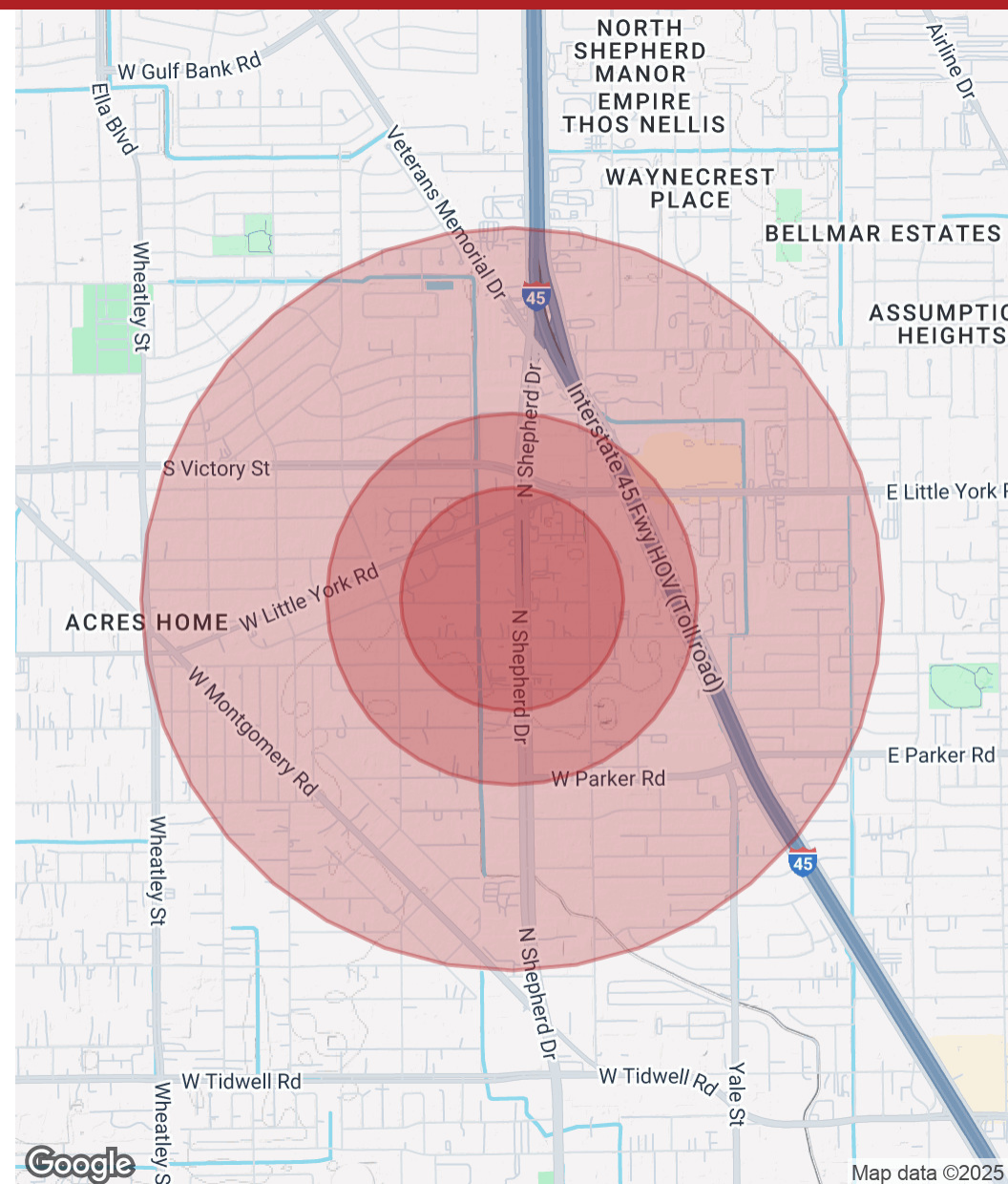
DEMOGRAPHICS MAP & REPORT | AUTO SHOP, FLEX, WAREHOUSE PROPERTY

FOR SALE: \$1,400,000

POPULATION	0.3 MILES	0.5 MILES	1 MILE
Total Population	1,202	2,861	13,075
Average Age	37	36	36
Average Age (Male)	37	36	36
Average Age (Female)	37	37	37

HOUSEHOLDS & INCOME	0.3 MILES	0.5 MILES	1 MILE
Total Households	481	1,079	4,577
# of Persons per HH	2.5	2.7	2.9
Average HH Income	\$38,733	\$41,707	\$48,004
Average House Value	\$215,651	\$252,316	\$234,458

Demographics data derived from AlphaMap



ADAM OLSEN, CCIM

713.614.2670

adam@thecommercialprofessionals.com

**THE COMMERCIAL PROFESSIONALS**

To Schedule A Showing Call 713.538.1638

**THE COMMERCIAL PROFESSIONALS**

713.614.2670

thecommercialprofessionals.com

2800 Post Oak Blvd, Suite 4100, Houston, TX 77056

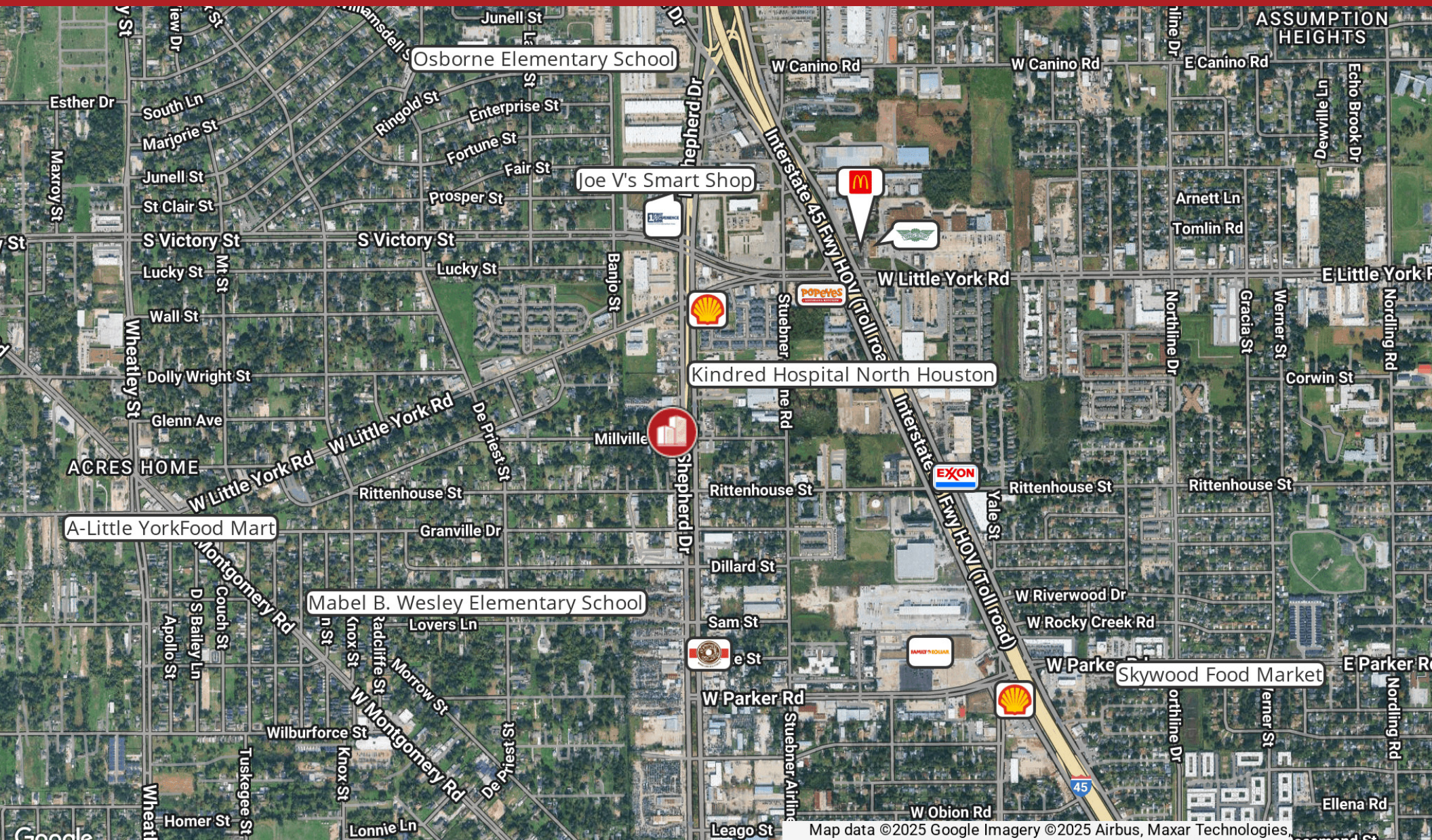


# FULLY EQUIPPED AUTO REPAIR & BODY SHOP | ESTABLISHED, HIGH-TRAFFIC LOCATION

7215 N SHEPHERD DR, HOUSTON, TX 77091

RETAILER MAP | AUTO SHOP, FLEX, WAREHOUSE PROPERTY

FOR SALE: \$1,400,000



ADAM OLSEN, CCIM

713.614.2670

adam@thecommercialprofessionals.com

**THE COMMERCIAL PROFESSIONALS**

To Schedule A Showing Call 713.538.1638

**THE COMMERCIAL PROFESSIONALS**

713.614.2670

thecommercialprofessionals.com

2800 Post Oak Blvd, Suite 4100, Houston, TX 77056