

9702 Industrial Dr., Bridgeview, IL

Available For Lease: 9,375 SF



ACCESS TO I-294 & 95th ST. INTERCHANGE

Direct Exposure to 76th Avenue

BUILDING SIZE: 43,750 SF

AVAILABLE: 9,375 SF

LOT SIZE: 2.13 Acres

OFFICE: 2,000 SF

TRUCK LOADING: 2 Docks; 1 Drive-In Door

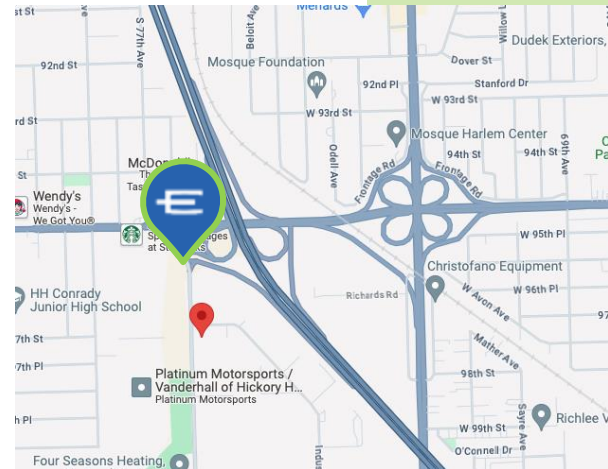
CEILING HEIGHT: 16'

SPRINKLER: Yes

PARKING: 6 Spaces

ZONING: Industrial

ASKING PRICE: Subject to Offer



PROFESSIONALLY OWNED AND MANAGED BY



SCAN FOR LISTING

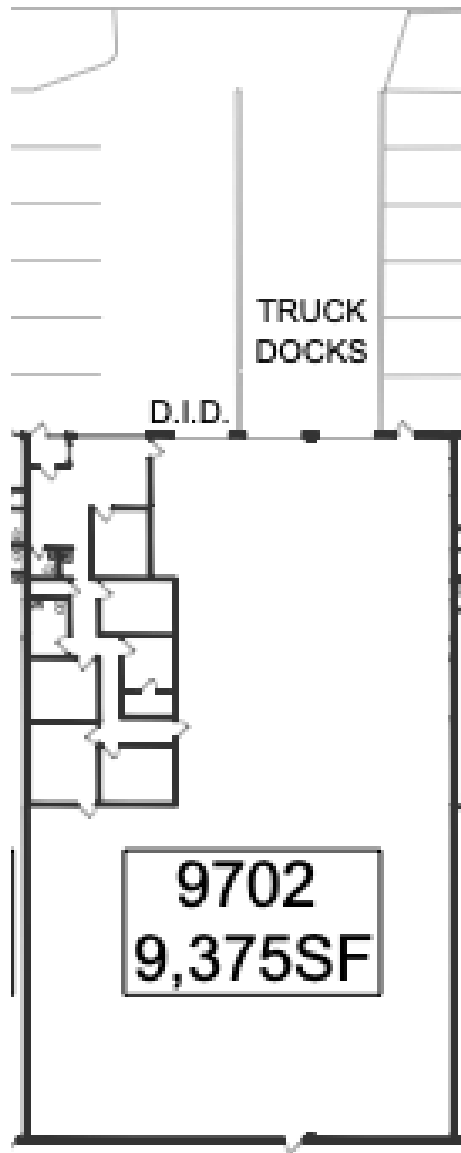


ENTRE
Commercial Realty LLC

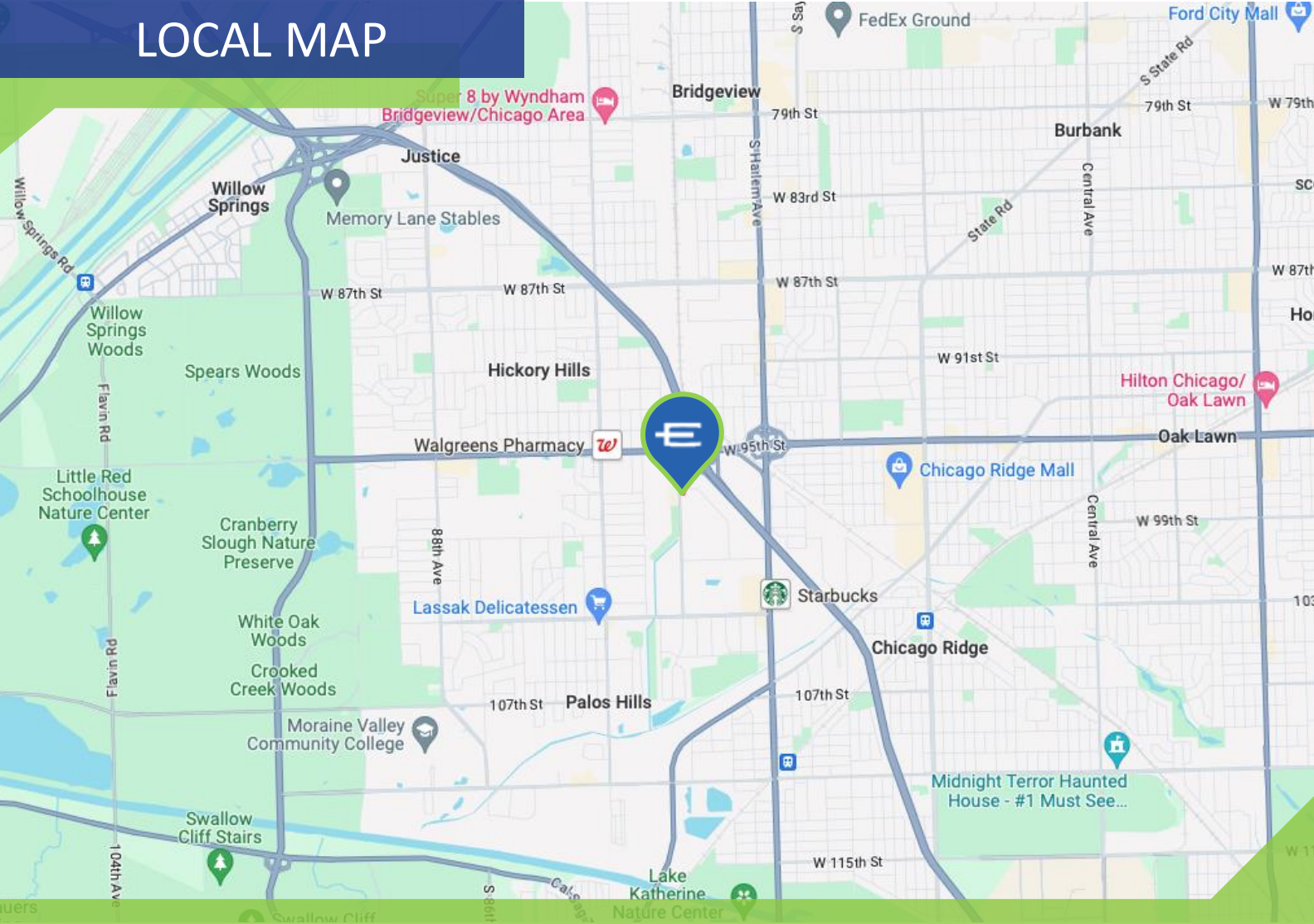
Chris Wilbur
708-860-8589
cwilbur@entcommercial.com

Jeff Locascio, SIOR
708-705-3857
jeff@industrialbroker.net

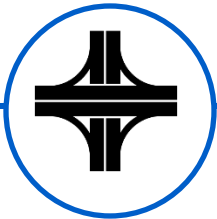
SPACE PLAN



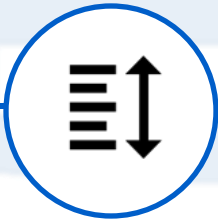
LOCAL MAP



SCAN FOR MAP VIEW



**Immediate Access
to I-294 & 95th St.
Interchange**



**2 Docks;
1 DID**



**Direct Exposure
to 76th Ave**

ENTRE
Commercial Realty LLC

Chris Wilbur
708-860-8589
cwilbur@entreccommercial.com

Jeff Locascio, SIOR
708-705-3857
jeff@industrialbroker.net