

NORTH SAN JOSE, CLASS A OFFICE

2150

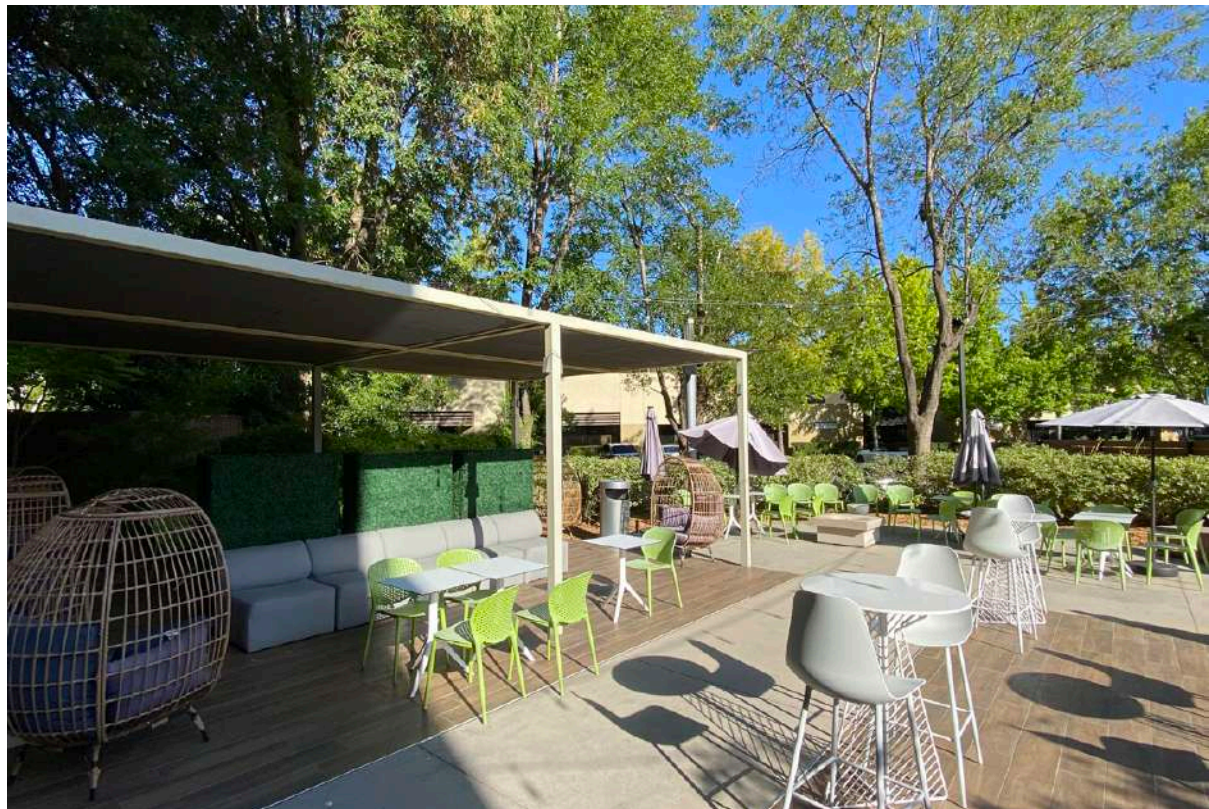
North First Street



NEWMARK

PROJECT HIGHLIGHTS

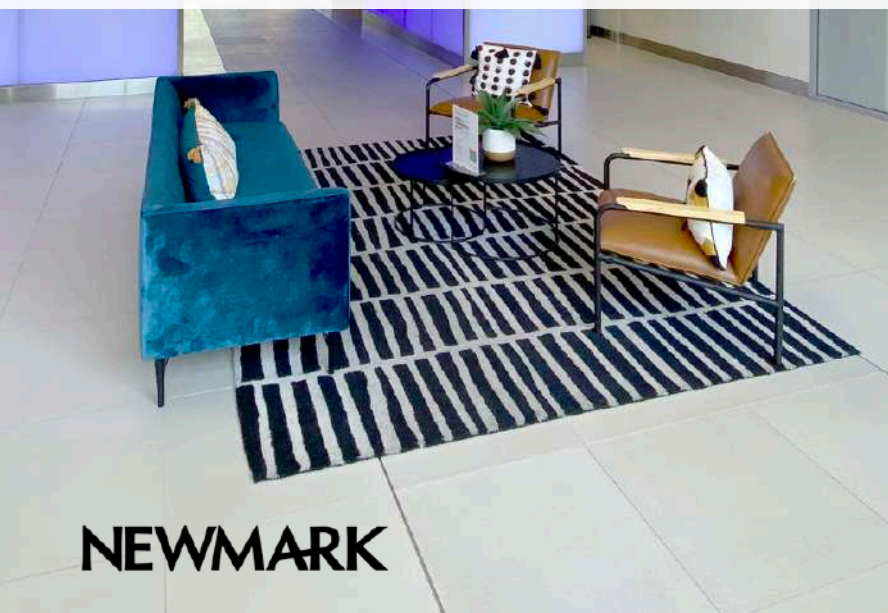
- Class A Office
- Common Conference Center
- Fitness Center
- Parking: 3.2/1,000
- Easy access to Highways 101 and 880
- Adjacent to San Jose International Airport
- Immediate access to VTA Lightrail
- High end building lobby
- Walkable restaurants
- Additional flex and co-working opportunities available (Expansive)
- High end outdoor amenity area and work space with Bluetooth audio
- Call for pricing and touring instructions



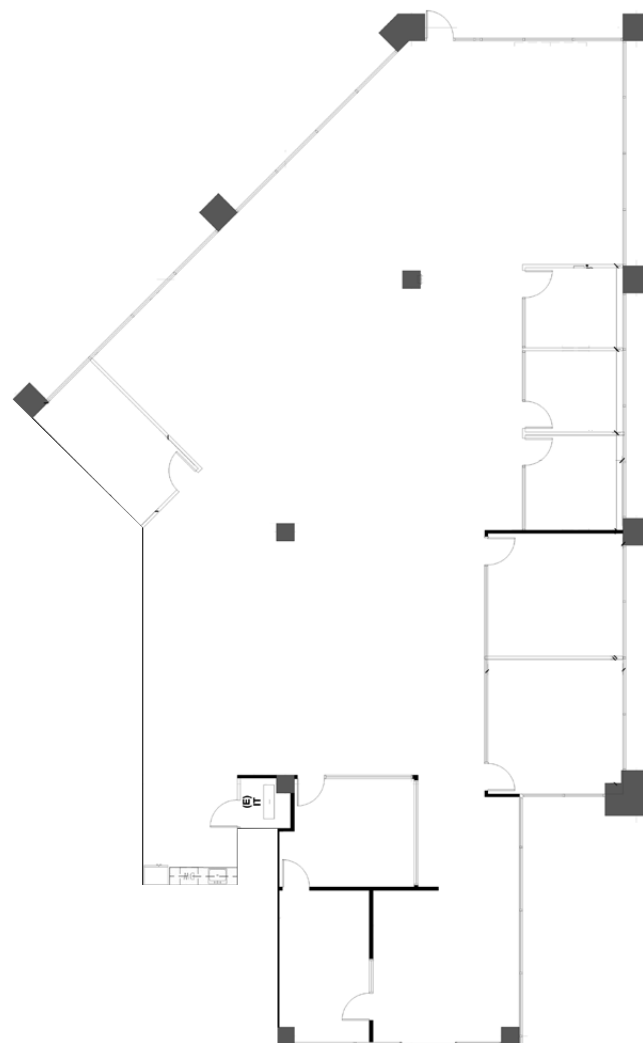
AVAILABLE SPACE

SUITE 100 ±5,970 SF

- Mix of Privates and Open Office
 - » 3 Private Offices
 - » 4 Conference Room
 - » BreakRoom
 - » Supply Room
 - » IT/Server Room
- Extensive Window-Line with Excellent Views
- Available September 1, 2024



NEWMARK



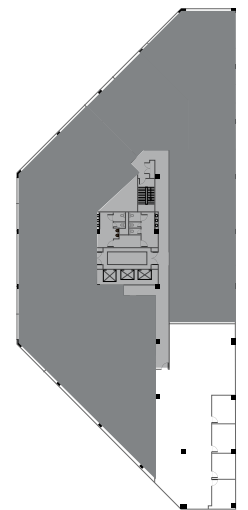
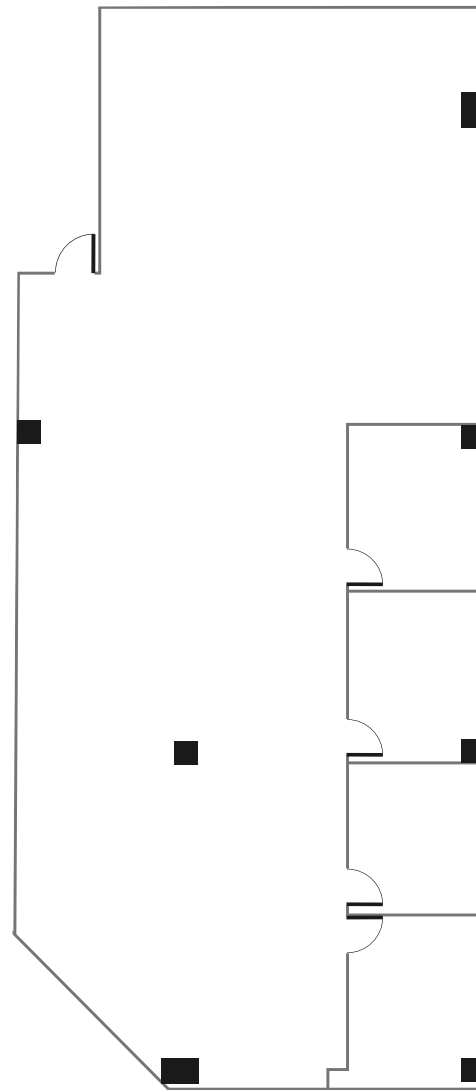
AVAILABLE SPACE

SUITE 360 ±4,344 SF

- 4 Private Offices
- Remainder Open Office
- Extensive Window-Line with Excellent Views



NEWMARK



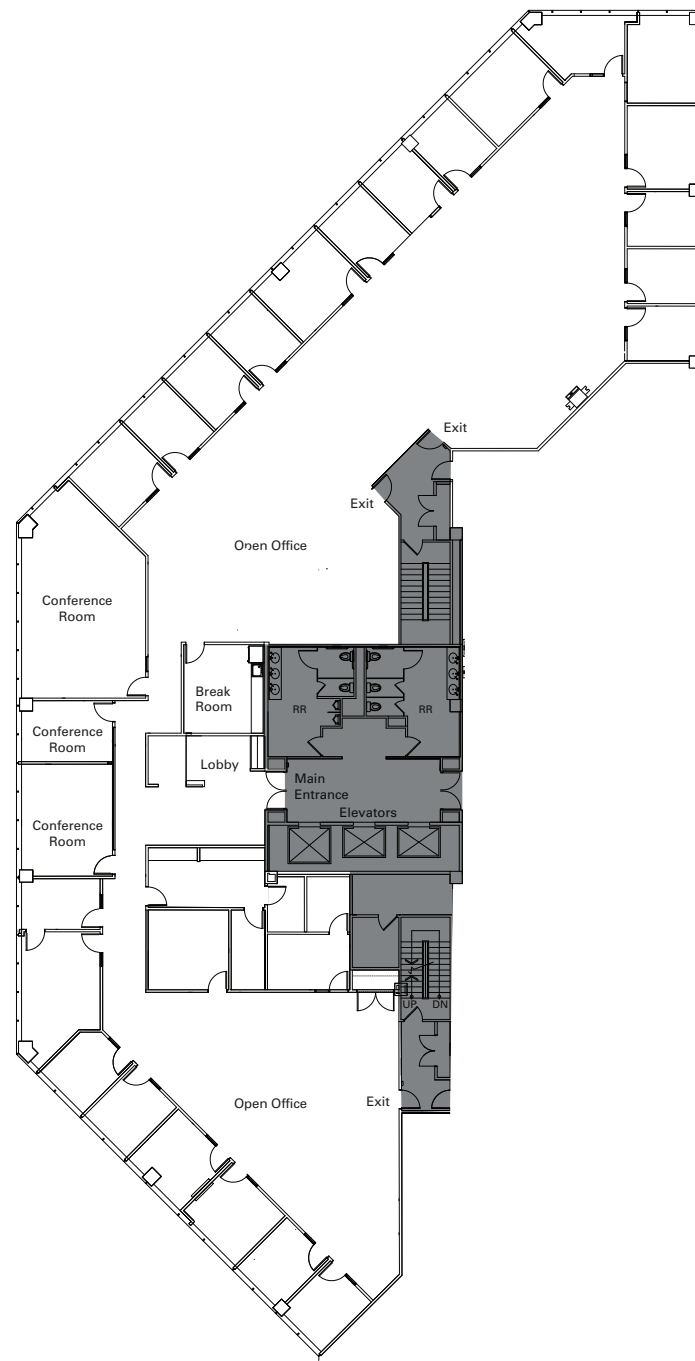
AVAILABLE SPACE

SUITE 500 ±13,147 SF

- Professional Service Build-Out
- 24 Private Offices
- 2 Conference Rooms + 1 Training Room
- 3 Storage/ Supply Rooms
- IT Office + Server Room w/ Dedicated Air
- Double-Door Elevator Lobby Entrance
- Turnkey Furniture Available
- Beautiful Views



NEWMARK



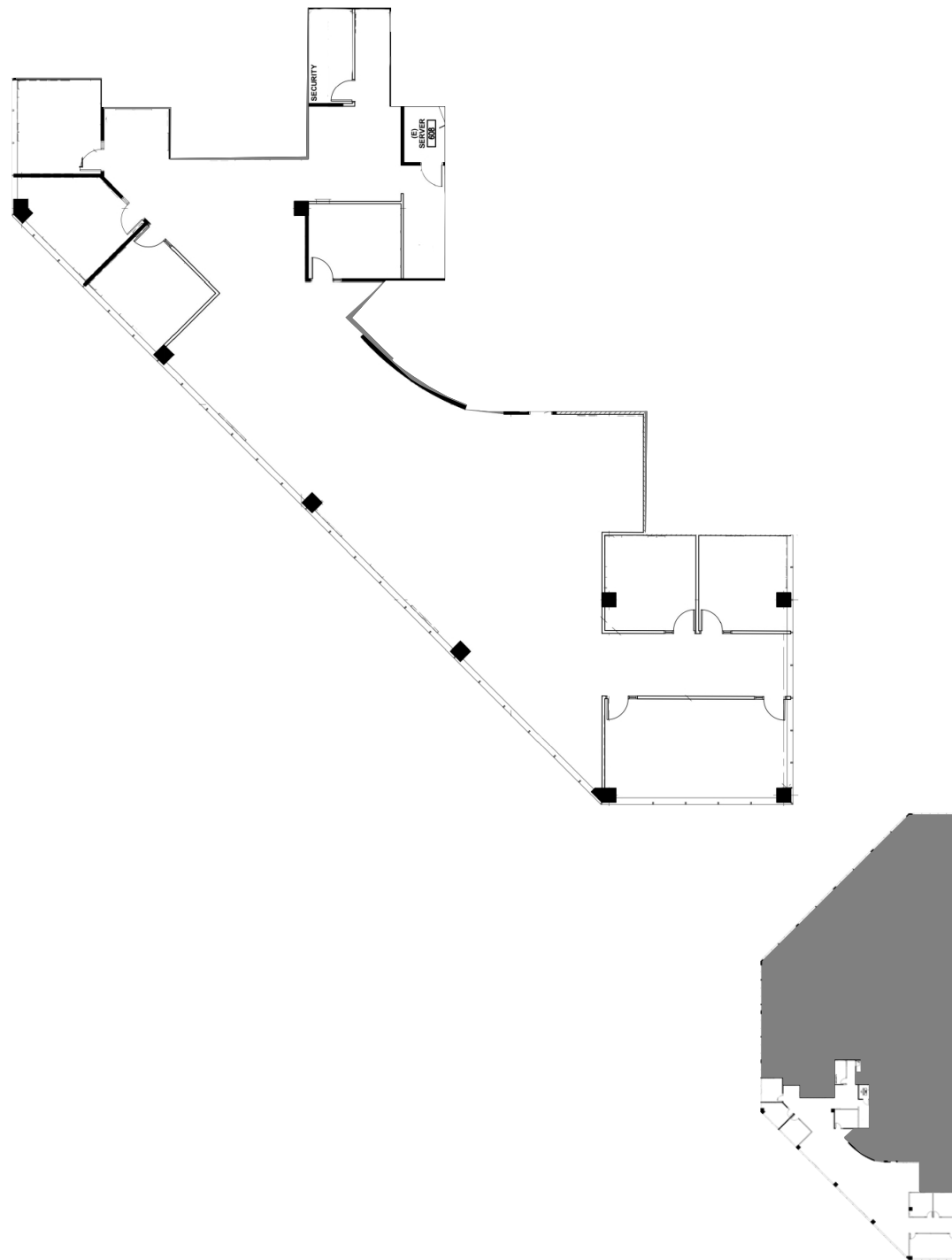
AVAILABLE SPACE

SUITE 600 ±6,420 SF

- Mix of Privates and Open Office
 - » 5 Private Offices
 - » Boardroom
 - » Conference Room
 - » Supply Room
 - » Server Room
- Extensive Window-Line with Excellent Views
- Available May 1, 2024



NEWMARK



PROPERTY PHOTOS





 dishdash *iUNAMAS!*
 Korean House UME OKAYAMA XPRESS
 HALAL GYRO EXPRESS




































































LOCAL AMENITIES

Mineta San Jose International Airport



TRANSPORTATION MAP





2150

North First Street

TRACEY SOLARI

Executive Managing Director

408.987.4148

tracey.solari@nmrk.com

CA RE License #01269780

SHAWN KELLENBERGER

Executive Managing Director

408.987.4170

shawn.kellenberger@nmrk.com

CA RE License #01706215

SHERRY GUBERA

Senior Managing Director

408.987.4169

sherry.gubera@nmrk.com

CA RE License #01481856

NEWMARK

The distributor of this communication is performing acts for which a real estate license is required. The information contained herein has been obtained from sources deemed reliable but has not been verified and no guarantee, warranty or representation, either express or implied, is made with respect to such information. Terms of sale or lease and availability are subject to change or withdrawal without notice. MP23-231 • 03/2024