

# FOR LEASE

1389 West Main St., Suite 306, Waterbury, CT

MATTHEWS COMMERCIAL PROPERTIES



## ±537 SF Medical or Professional Office Suite

**LEASE RATE: \$1,050 / Month (Gross) Including Utilities**

- ±537 medical or professional office suite
- Rent includes all utilities, property taxes, building insurance, and common area maintenance (CAM)
- Convenient access to I-84 and Route 8
- Surrounded by retail, medical, office, and service-oriented uses along West Main Street
- Offices are furnished

**GERRY D. MATTHEWS**  
203.753.5800  
[matthewscre@gmail.com](mailto:matthewscre@gmail.com)

All information furnished is from sources deemed reliable and is submitted subject to errors, omissions, change of other terms of conditions, prior sale, lease or financing or withdrawal—all without notice. No representation is made or implied by Matthews Commercial Properties or its associates as to the accuracy of the information submitted herein.

# FOR LEASE

1389 West Main St., Suite 306, Waterbury, CT

MATTHEWS COMMERCIAL PROPERTIES



## BUILDING

- Total Available SF: ±537 SF (Tower 1)
- Exterior Construction: Brick
- Interior Construction: Finished office
- Roof: Flat EPDM membrane roof
- Year Built: 1964

## PROPERTY

- Proximity to Major Highways: 0.5 Miles to I-84, 1.1 Miles to Route 8
- Parking: Free on-site parking
- Zoning: RM

## MECHANICALS & UTILITIES

- Heat Source / Type: Gas — Forced Air
- Air Conditioning: Central
- Electric: Eversource
- Sewer & Water: City

# FOR LEASE

1389 West Main St., Suite 306, Waterbury, CT



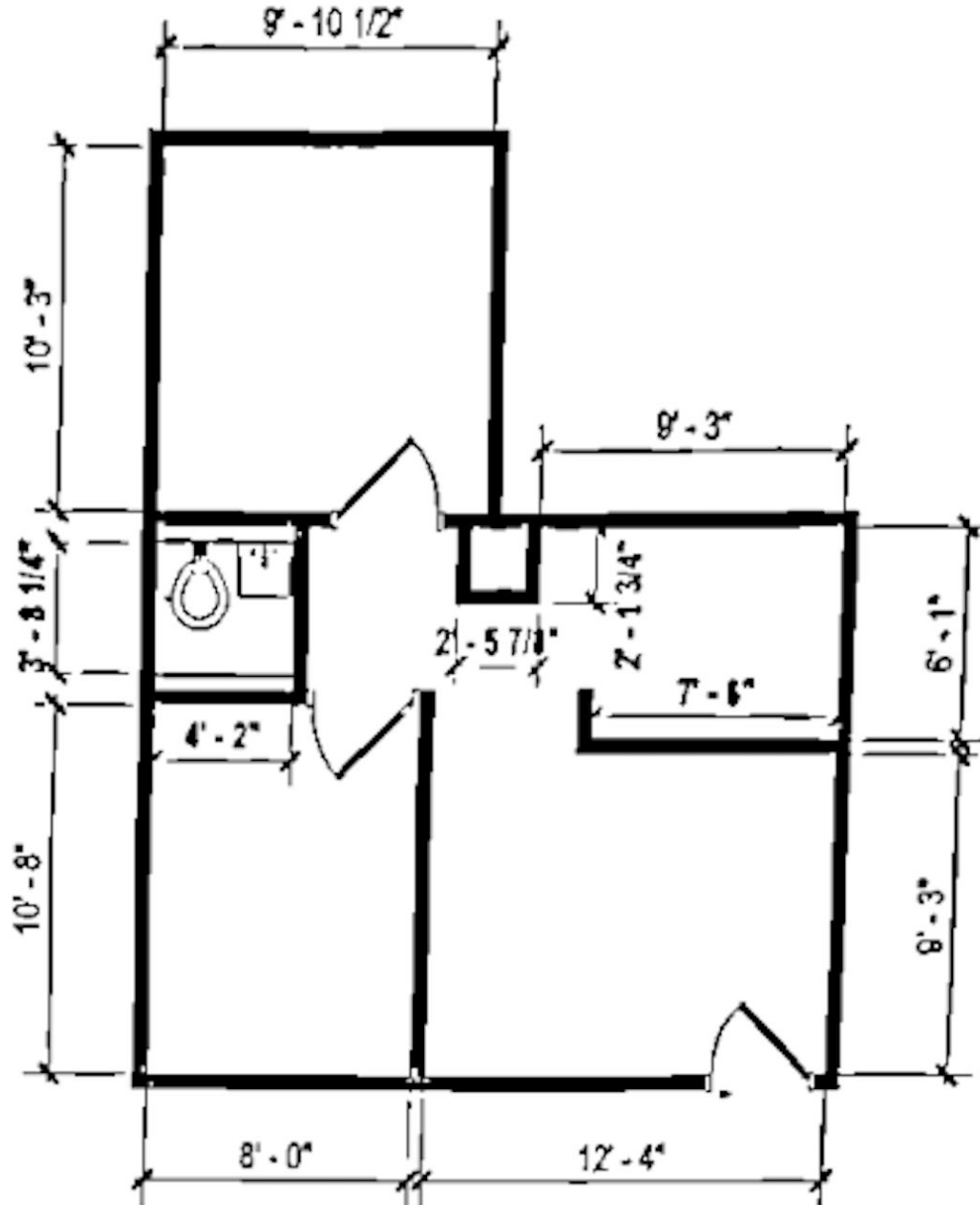
# FOR LEASE

1389 West Main St., Suite 302, Waterbury, CT



# FOR LEASE

1389 West Main St., Suite 302, Waterbury, CT



SUITE 302

# FOR LEASE

1389 West Main St., Suite 302, Waterbury, CT



# FOR LEASE

1389 West Main St., Suite 302, Waterbury, CT

MATTHEWS COMMERCIAL PROPERTIES



**City of Waterbury**  
Public Works Department

MBL: 0315-0047-0001  
ADDRESS: 1389 WEST MAIN ST

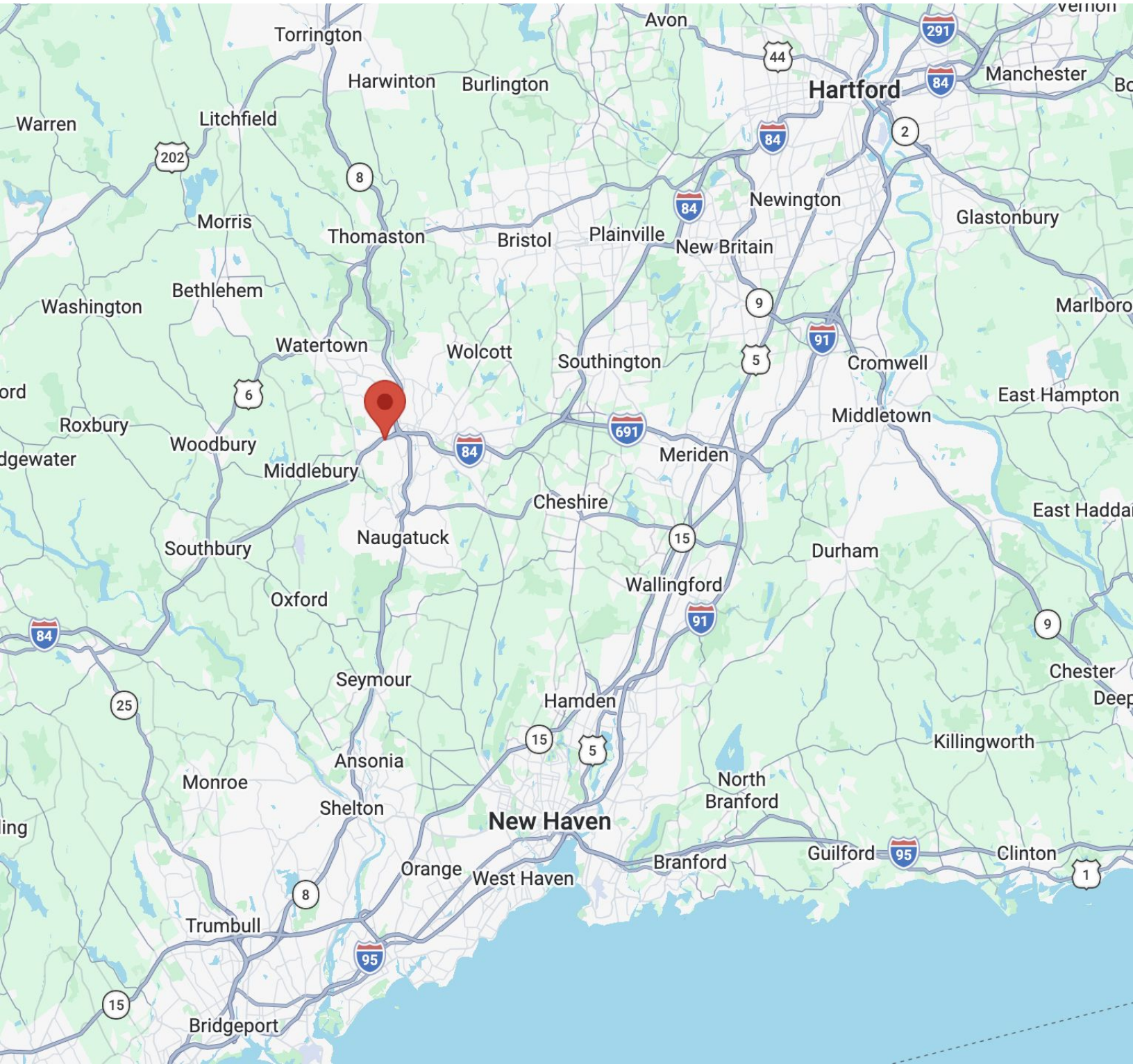
This map is for informational purposes only and has not been prepared for, or suitable for legal, engineering, or surveying purposes. Users of this information should review or consult the primary data and information sources to verify the usability of the information. The City of Waterbury makes no warranties, express or implied, as to the use of the information obtained herein.



# FOR LEASE

1389 West Main St., Suite 302, Waterbury, CT

MATTHEWS COMMERCIAL PROPERTIES



**GERRY D. MATTHEWS**  
203.753.5800  
[matthewscre@gmail.com](mailto:matthewscre@gmail.com)

MATTHEWS COMMERCIAL PROPERTIES LLC  
819 Straits Tpke, Suite 3B  
Middlebury, CT 06762  
[matthewscommercial.com](http://matthewscommercial.com)