

**FOR SALE**

# 1,300 SF END-UNIT OFFICE FOR SALE

29 PLANTATION PARK DRIVE, #701, BLUFFTON, SC 29910



**VM** | REAL ESTATE 



**CONTACT**

**VONNIE MAJEWSKI**

843.338.1799

[vonnie@vmrealestate.com](mailto:vonnie@vmrealestate.com)



FOR SALE

# PROPERTY OVERVIEW

29 PLANTATION PARK DRIVE BLUFFTON, SC 29910



## OFFERING SUMMARY

Sale Price:	\$350,000
Available SF:	1,300 SF
Year Built:	2003
Zoning:	PUD
Market:	Bluffton

## PROPERTY HIGHLIGHTS

- 1,300 SF End-unit Office Condo
- Centrally Business District - Bluffton
- Natural light from three sides
- Functional Layout
- Well Maintained Business Park

## PROPERTY OVERVIEW

1,300 sf end-unit, office condominium available for sale in Plantation Business Park. The building has tabby exterior and insulated glass. Currently configured with a foyer, waiting area with coffee bar, two double sized offices, two regular size offices, private restroom and storage closet. Well maintained with paint and flooring in good condition. HVAC replaced in 2017 and no load-bearing walls. Ideal for businesses looking to own their own office, or investors looking for a property to generate income in a high growth market.

## LOCATION OVERVIEW

Plantation Park is a well-established and well maintained business park within the central business district of Bluffton. The development has a nice mix of national and local tenants including a variety of retail, medical and professional office users. Direct access off Highway 278 and easy access to the Bluffton Parkway via Simmonsville and Buck Island Roads. The property is surrounded by residential and commercial developments.

VONNIE MAJEWSKI

843.338.1799

vonnie@vmrealestate.com

VM REAL ESTATE | 843.338.1799 | 39 PEARCE RD. BLUFFTON, SC 29910 | VMREALESTATE.COM

The information presented here is deemed to be accurate, but it has not been independently verified. We make no warranty or representation. It is your responsibility to independently confirm accuracy and completeness.



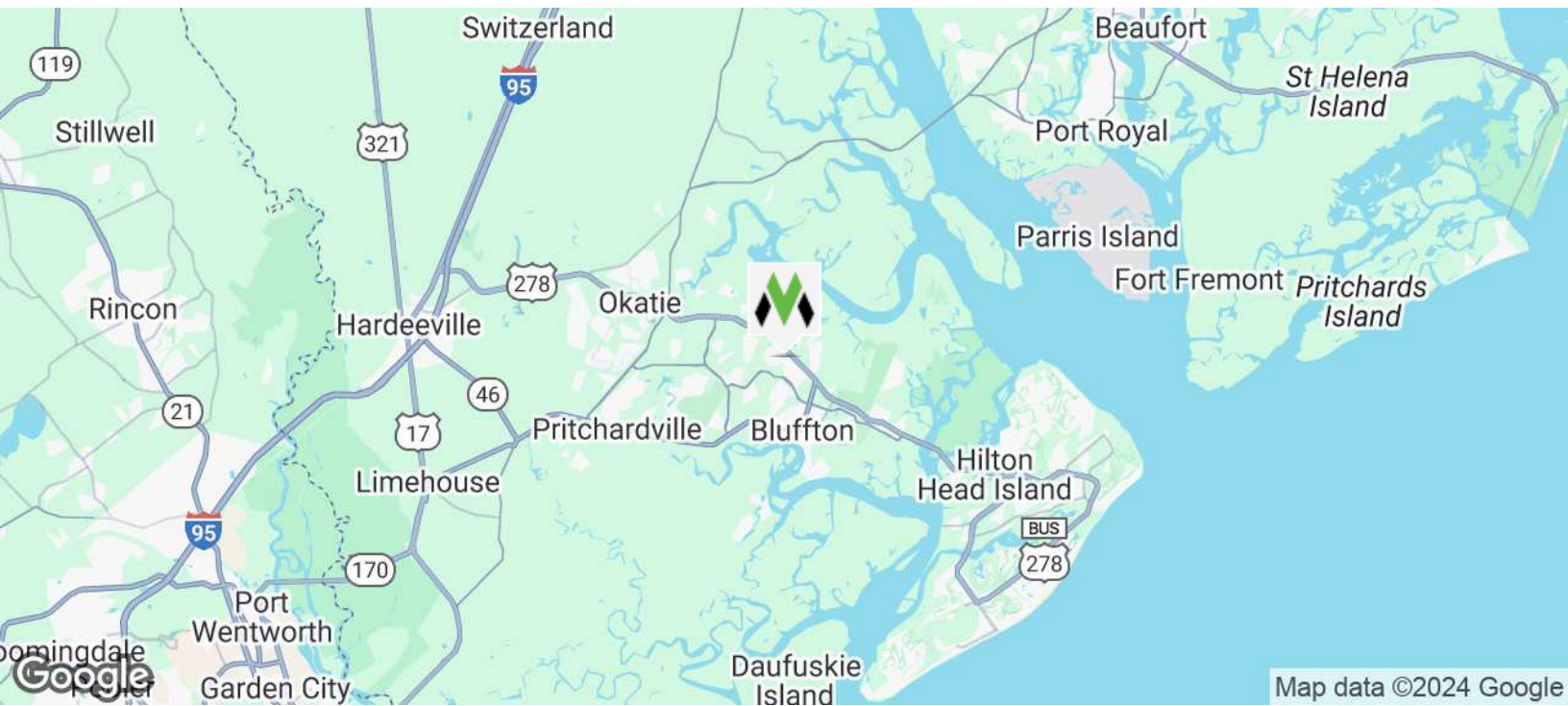
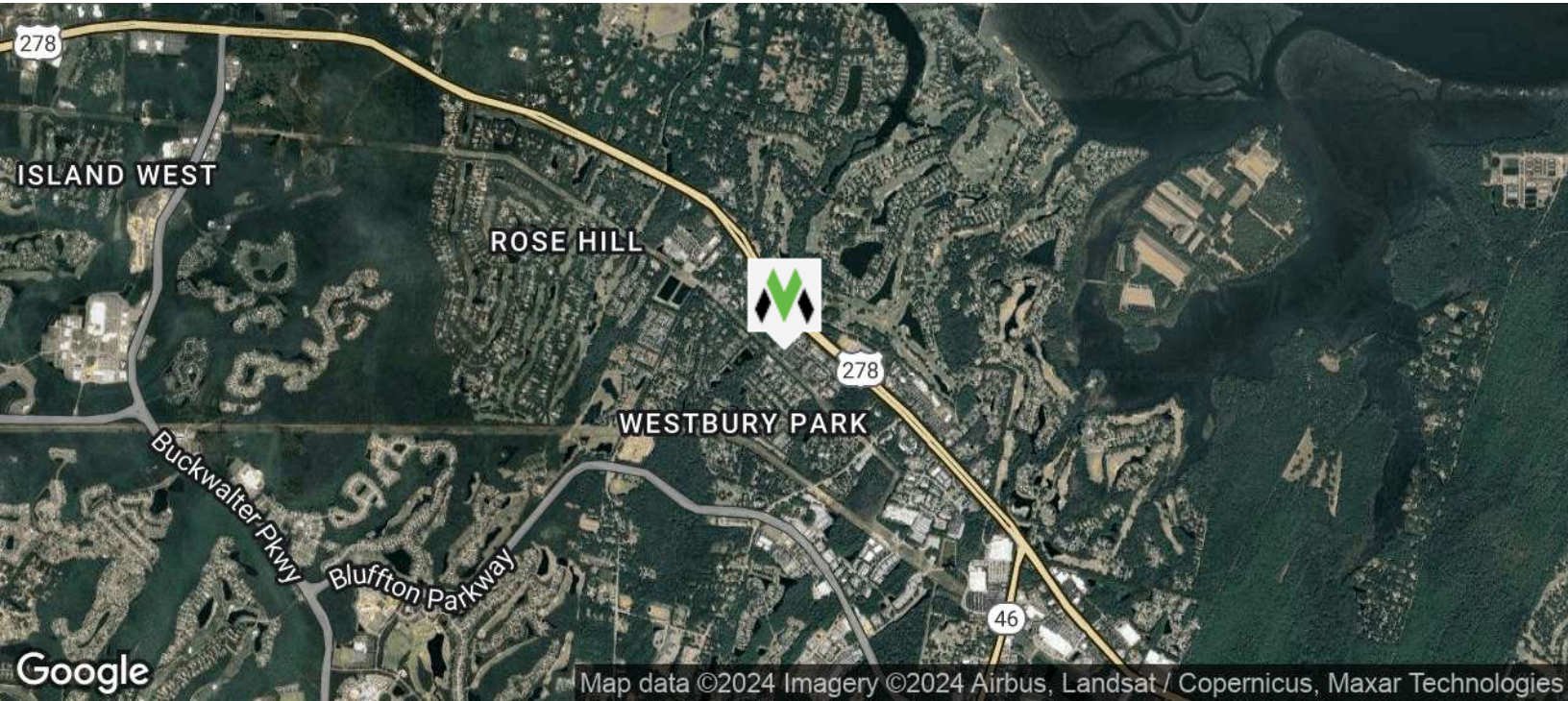
VM | REAL ESTATE



FOR SALE

# LOCATION MAPS

29 PLANTATION PARK DRIVE BLUFFTON, SC 29910



**VONNIE MAJEWSKI**  
843.338.1799  
vonnie@vmrealestate.com



VM REAL ESTATE | 843.338.1799 | 39 PEARCE RD. BLUFFTON, SC 29910 | VMREALESTATE.COM

VM | REAL ESTATE 

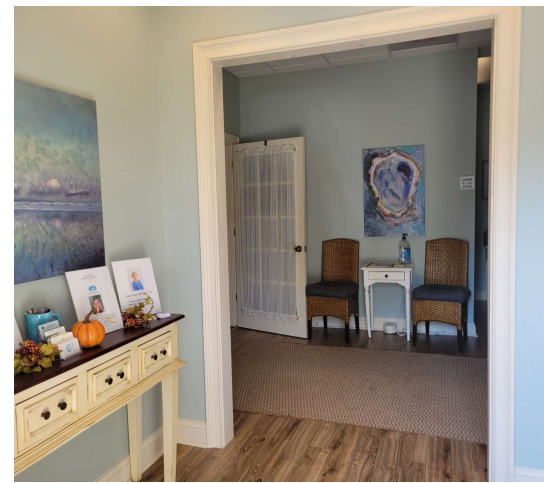
The information presented here is deemed to be accurate, but it has not been independently verified. We make no warranty or representation. It is your responsibility to independently confirm accuracy and completeness.



FOR SALE

# INTERIOR PICTURES

29 PLANTATION PARK DRIVE BLUFFTON, SC 29910



VONNIE MAJEWSKI  
843.338.1799  
vonnie@vmrealestate.com

VM REAL ESTATE | 843.338.1799 | 39 PEARCE RD. BLUFFTON, SC 29910 | VMREALESTATE.COM

The information presented here is deemed to be accurate, but it has not been independently verified. We make no warranty or representation. It is your responsibility to independently confirm accuracy and completeness.



VM | REAL ESTATE