



INVESTMENT BUILDINGS FOR SALE

14,000+/- TOTAL SF ON 1.91+/- AC

3476 PALMER DRIVE, LOGANVILLE, GA. 30052



PROPERTY HIGHLIGHTS

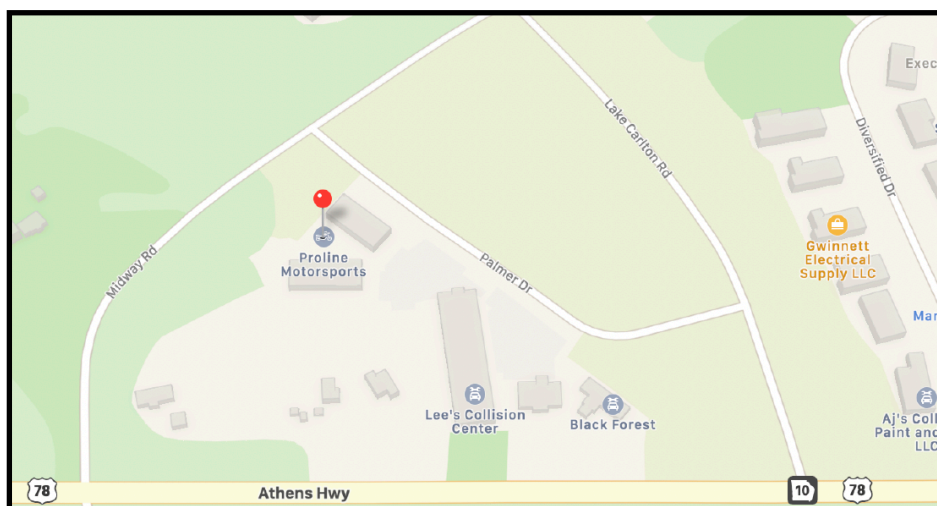
Total SF: 14,000 SF+/-
Zoning: C-2 (Gwinnett County)
Year Built: 2011 & 2015
Acreage: 1.91+/-

BUILDING A: 6,500+/- SF Total

- 100% Office
- 5 Grade-Level Door Knock-Outs

BUILDING B: 7,500+/- SF Total

- 98% Warehouse Space
- 6 Grade Level Doors (12' X 14')
- 14' - 16' Clear Ceiling Height
- 3 Phase Power
- Fenced Outside Storage



For More Information Contact:
Jeremy Dupree, SIOR
770.633.5312
jdupree@COREcommercialinc.com

www.COREcommercialinc.com

Every effort has been made to provide accurate information, but no liability is assumed for omissions and errors.

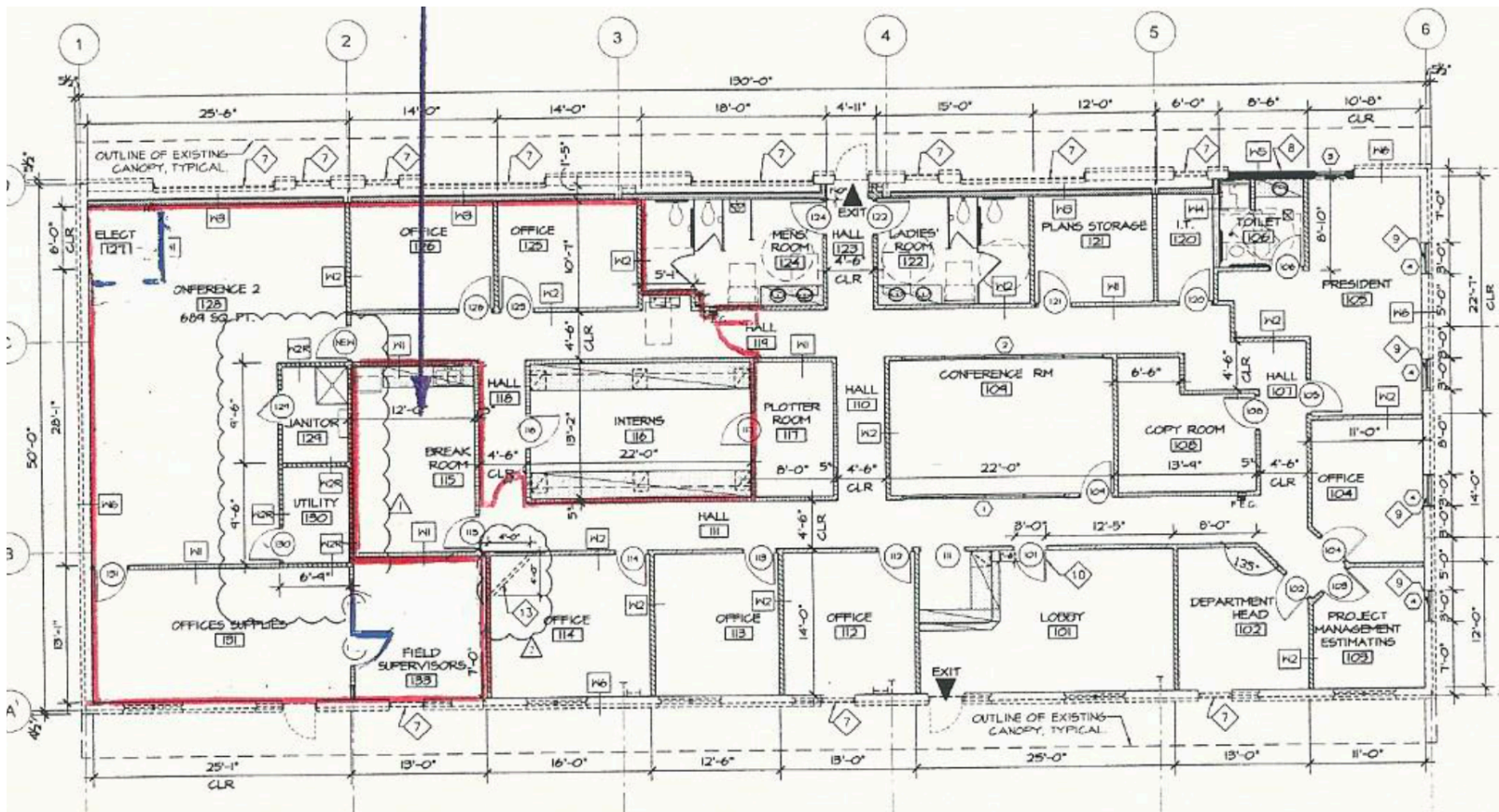


INVESTMENT BUILDINGS FOR SALE

14,000+/- TOTAL SF ON 1.91+/- AC

3476 PALMER DRIVE, LOGANVILLE, GA. 30052

** 6,500+/- SF Office Building Floor Plan



For More Information Contact:
Jeremy Dupree, SIOR
770.633.5312
jdupree@COREcommercialinc.com

www.COREcommercialinc.com

Every effort has been made to provide accurate information, but no liability is assumed for omissions and errors.



INVESTMENT BUILDINGS FOR SALE

14,000+/- TOTAL SF ON 1.91+/- AC

3476 PALMER DRIVE, LOGANVILLE, GA. 30052



For More Information Contact:
Jeremy Dupree, SIOR
770.633.5312
jdupree@COREcommercialinc.com

www.COREcommercialinc.com

Every effort has been made to provide accurate information, but no liability is assumed for omissions and errors.