

337

CEE & CEE D

EAST FORDHAM ROAD

BETWEEN MARION & BAINBRIDGE AVENUES
FORDHAM | THE BRONX

Tejada

UNIQUE

FURNITURE

337

718-733-7200

Mens

HOP
VELRY
EMPEÑOS
GOLD
OND
863



337

EAST FORDHAM ROAD


SIZE: 1,100 - 2,200 SF Ground Floor + Basement (for each division)

FRONTAGE: 40'

CEILING HEIGHT: 12'

POSSESSION: Immediate

ASKING RENT: Upon Request

TRANSPORTATION:  Metro-North Railroad

HIGHLIGHTS:

- Prime space on one of the best blocks in The Bronx
- High foot traffic area in dense residential neighborhood
- Open to all uses
- Clean open space
- Excellent branding/signage
- Neighboring tenants include: Gong Cha', GAP, KFC, Wingstop, Planet Fitness, Vitamin Shoppe, Burlington, Little Caesar's, Taco Ball, Rainbow, Burger King, Chipotle, Foot Locker, Popeye's, VIM, JD Sports, Jimmy Jazz, Five Below, Jollibee

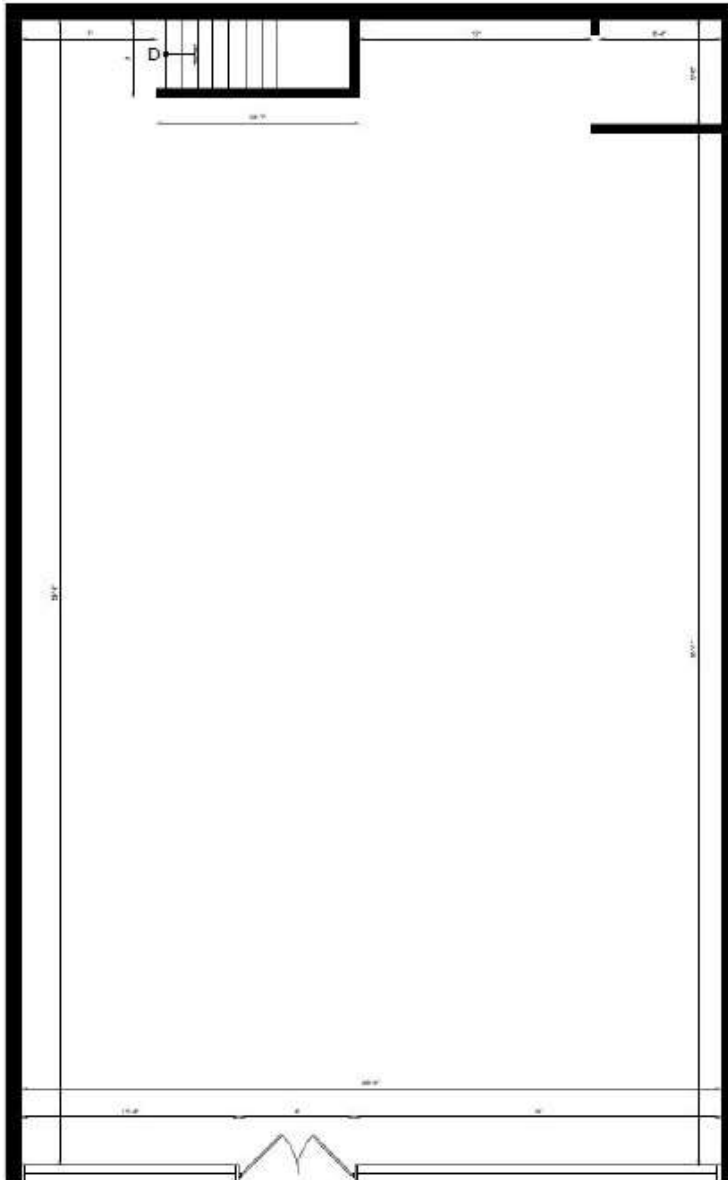


337

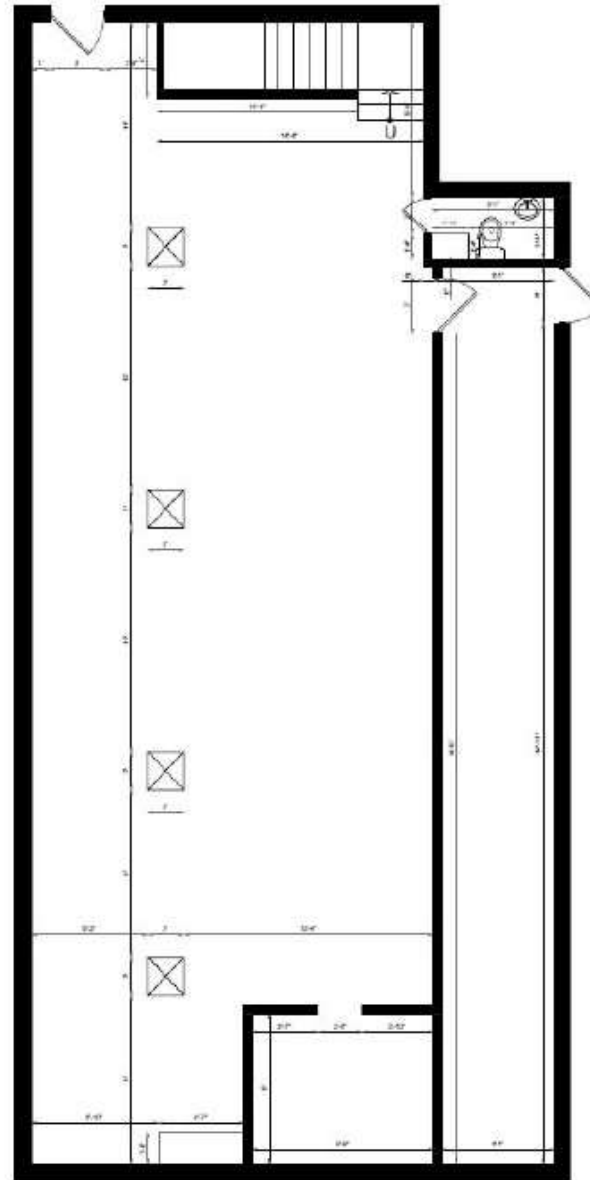
EAST FORDHAM ROAD

FLOOR PLANS:

GROUND FLOOR - 1,100 - 2,200 SF



BASEMENT (SPLIT WITH DIVISIONS)



337

EAST FORDHAM ROAD
BETWEEN MARION & BAINBRIDGE AVENUES
FORDHAM | THE BRONX

FOR MORE INFORMATION,
PLEASE CONTACT:

FREDDY SOUID

917.968.0329 | FSouid@ksrny.com

JACK HAMADANI

718.415.0095 | JHamadani@ksrny.com

