

FOR SALE



6960 Moffett Rd. | Mobile, AL



18.6±
ACRES

MOFFETT RD

Brandon Broadus



251.288.7786 | bbroadus@cre-mobile.com

Allan R. Cameron, Jr.



SIR

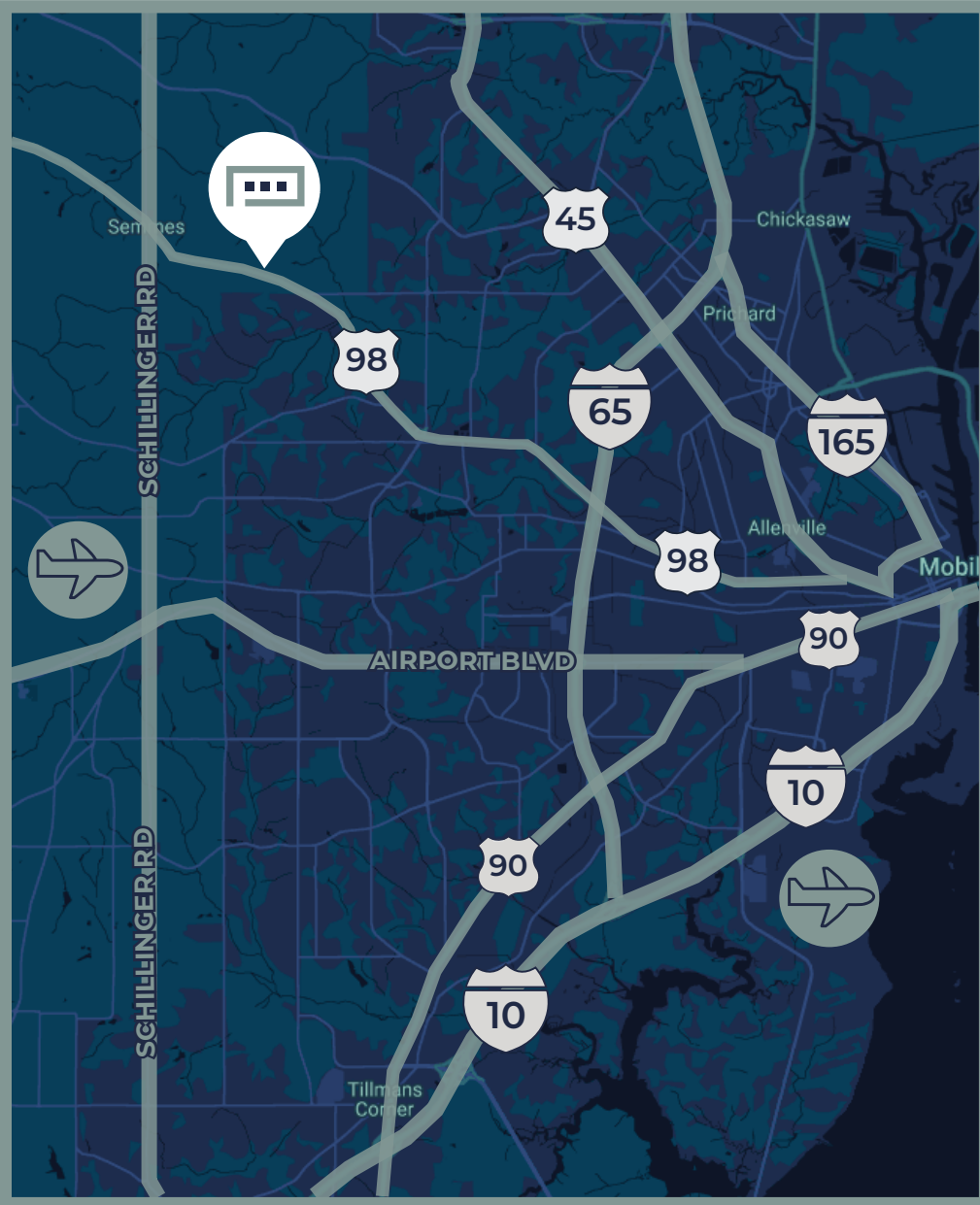
251.751.9553 | acameron@cre-mobile.com



CRE
MOBILE
CRE-MOBILE.COM

FOR SALE

 6960 Moffett Rd. | Mobile, AL



PROPERTY SIZE

18.6± Acres



ZONING

County Zoning



BEST USE

Perfect for Multifamily Redevelopment



FRONTAGE

500' Frontage on Moffett Rd.



UTILITIES

All Utilities Available to Site



SALES PRICE

\$450,000.00

LOCATION ADVANTAGES



Property Location

Located on the north side of Moffett Rd. in between Bear Fork Rd. & Schillinger Rd.



Conveniently Located

Immediate area features residential, retail & industrial, making this an ideal location for a multifamily development.



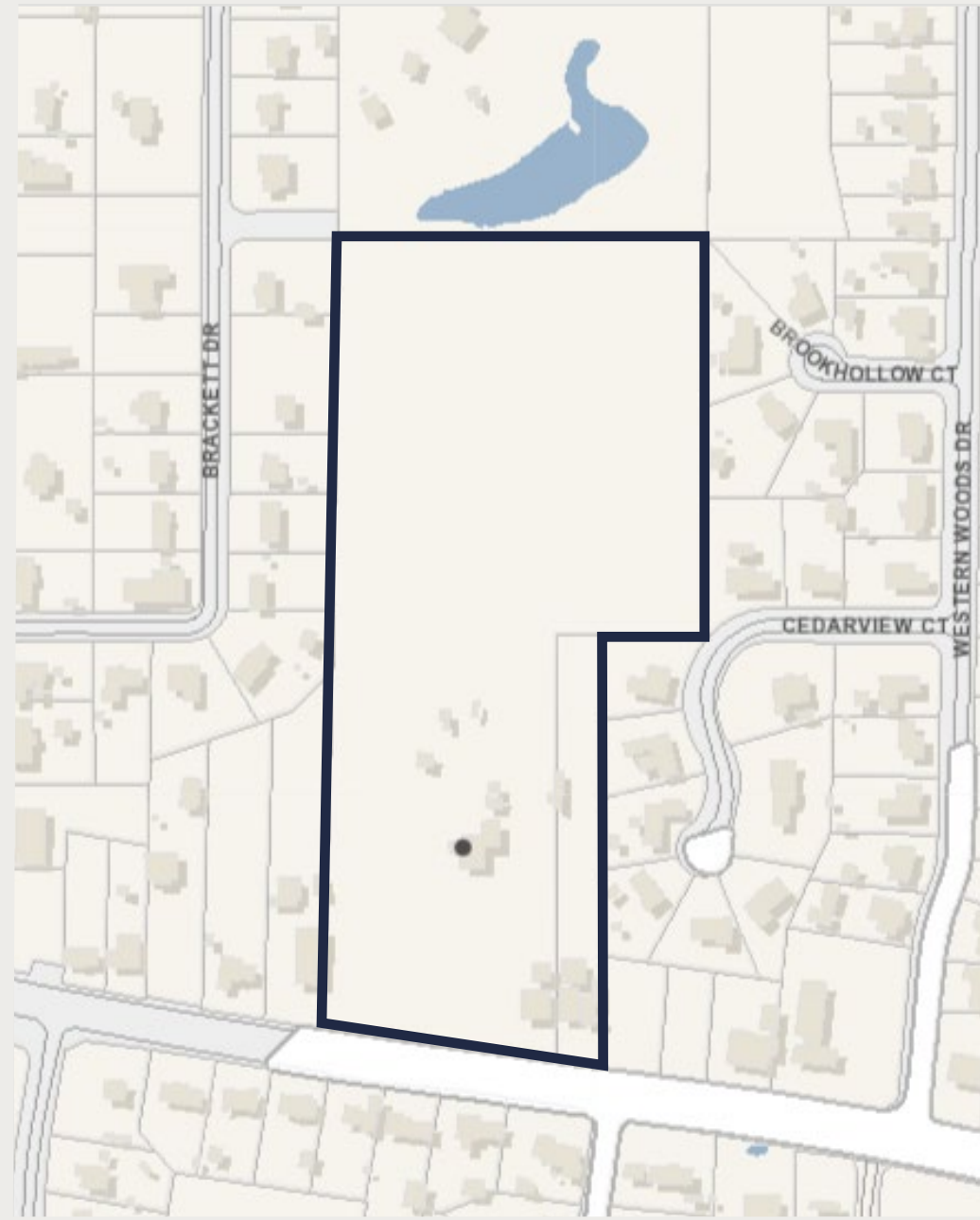
About CRE Mobile

CRE Mobile is a team of seasoned professionals with over 150 years of experience in all facets of real estate with a unique presence as a full-service commercial real estate firm in southwest Alabama. We align our goals with yours because we recognize the future of your asset depends upon our performance to deliver results to you. Success comes from being on the same page—from the big picture down to the small details. We are here to help you — find your space —



18.6± ACRES

MOFFETT RD



BRACKETT DR

BROOKHOLLOW CT

CEDARVIEW CT

WESTERN WOODS DR





NO WARRANTY OR REPRESENTATION, EXPRESS OR IMPLIED, IS MADE AS TO THE ACCURACY OF THE INFORMATION CONTAINED HEREIN, AND THE SAME IS SUBMITTED SUBJECT TO ERRORS, OMISSIONS, CHANGE OF PRICE, RENTAL OR OTHER CONDITIONS, PRIOR SALE, LEASE OR FINANCING, OR WITHDRAWAL WITHOUT NOTICE, AND OF ANY SPECIAL LISTING CONDITIONS IMPOSED BY OUR PRINCIPALS. NO WARRANTIES OR REPRESENTATIONS ARE MADE AS TO THE CONDITION OF THE PROPERTY NOR ANY HAZARDS CONTAINED THEREIN ARE ANY TO BE IMPLIED.

cre-mobile.com



**CRE
MOBILE**

FIND
YOUR
SPACE.