

**LEGEND**

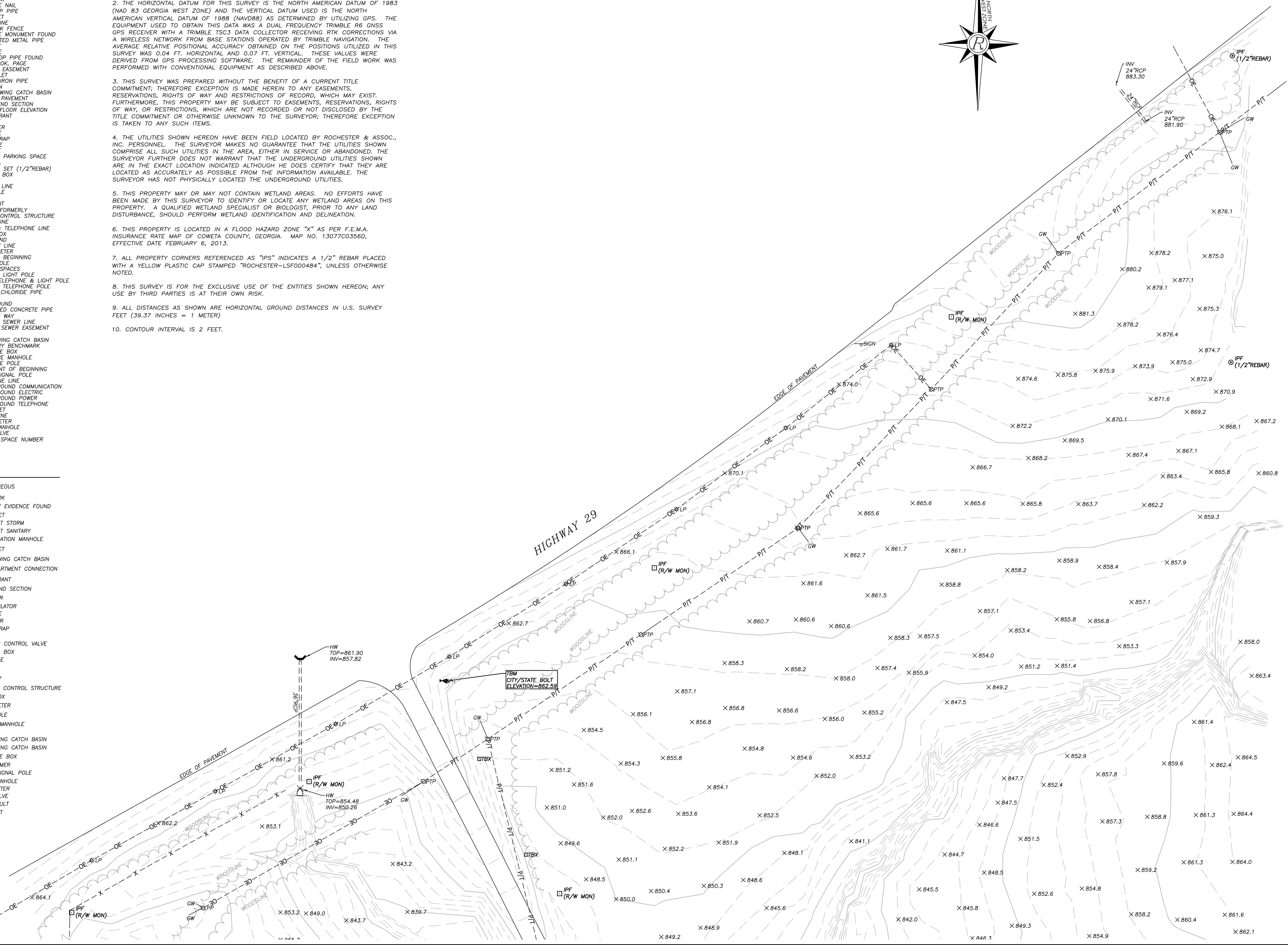
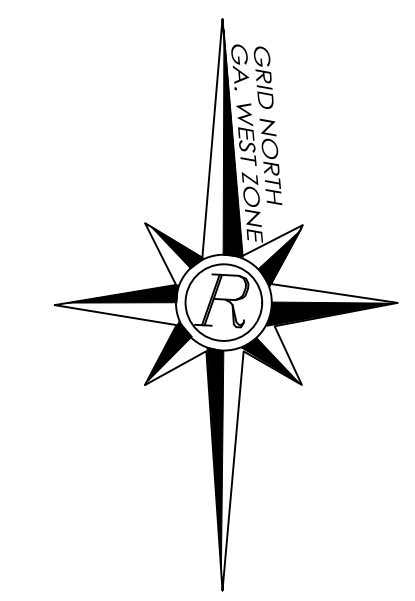
- AIF - ANGLE IRON FOUND
- AKA - ALSO KNOWN AS
- BC - BACK OF CURB
- BL - BUILDING SETBACK LINE
- BWF - BARBED WIRE FENCE
- C&G - CURB & GUTTER
- CBX - CABLE BOX
- CCN - CONCRETE NAIL
- CTP - CRIMP TOP PIPE
- CI - CURB INLET
- CL - CENTER LINE
- CLF - CHAIN LINK FENCE
- CMF - CONCRETE MONUMENT FOUND
- CMP - CORRUGATED METAL PIPE
- CO - CLEANOUT
- CONC - CONCRETE
- CTF - CRIMP TOP PIPE FOUND
- DB,PG - DEED BOOK, PAGE
- DE - DRAINAGE EASEMENT
- DI - DROP INLET
- DIP - DUCTILE IRON PIPE
- DIR - DIRECTORY
- DWCB - DOUBLE-WING CATCH BASIN
- ED - EDGE OF PAVEMENT
- FES - FLARED END SECTION
- FEE - FINISHED FLOOR ELEVATION
- FH - FIRE HYDRANT
- G - GAS LINE
- GM - GAS METER
- GP - GUY POLE
- GT - GREASE TRAP
- GV - GAS VALVE
- GW - GUY WIRE
- HC - HANDICAP PARKING SPACE
- HW - HEADWALL
- IPS - IRON PIN SET (1/2" REBAR)
- JB - JUNCTION BOX
- LL - LAND LOT
- LLL - LAND LOT LINE
- LP - LIGHT POLE
- MH - MANHOLE
- MON - MONUMENT
- N/F - NOW OR FORMERLY
- OCS - OUTLET CONTROL STRUCTURE
- OP - OVERFLOW CONTROL STRUCTURE
- PT - POWER & TELEPHONE LINE
- PBX - POWER BOX
- PP - POWER POLE
- PL - PROPERTY LINE
- PM - POWER METER
- POB - POINT OF BEGINNING
- PS - PARKING SPACES
- PLP - POWER & LIGHT POLE
- PTLP - POWER, TELEPHONE, & LIGHT POLE
- PTP - POWER & TELEPHONE POLE
- PVC - POLYVINYLCHLORIDE PIPE
- PVMT - PAVEMENT
- RF - REBAR FOUND
- RCP - REINFORCED CONCRETE PIPE
- R/W - RIGHT OF WAY
- S - SANITARY SEWER LINE
- SE - SANITARY SEWER EASEMENT
- S/W - SIDEWALK
- SWCB - SINGLE-WING CATCH BASIN
- TSM - TEMPORARY BENCHMARK
- TBX - TELEPHONE BOX
- TMH - TELEPHONE MANHOLE
- TP - TELEPHONE POLE
- TPOB - TRUE POINT OF BEGINNING
- TSP - TRAFFIC SIGNAL POLE
- UT - UNDERGROUND TELEPHONE
- UE - UNDERGROUND ELECTRIC
- UP - UNDERGROUND POWER
- UT - UNDERGROUND TELEPHONE
- WI - WEIR INLET
- W - WATER LINE
- WM - WATER METER
- WMH - WATER MANHOLE
- WV - WATER VALVE
- 7 - PARKING SPACE NUMBER

**SYMBOLOLOGY**

- ⊕ - MISCELLANEOUS
- ⊙ - BENCHMARK
- ⊗ - BOUNDARY EVIDENCE FOUND
- ⊠ - CURB INLET
- ⊡ - CLEAN OUT STORM
- ⊢ - CLEAN OUT SANITARY
- ⊣ - COMMUNICATION MANHOLE
- ⊤ - DROP INLET
- ⊥ - DOUBLE-WING CATCH BASIN
- ⊦ - FIRE DEPARTMENT CONNECTION
- ⊧ - FIRE HYDRANT
- ⊨ - FLARED END SECTION
- ⊩ - GAS METER
- ⊪ - GAS REGULATOR
- ⊫ - GAS VALVE
- ⊬ - GENERATOR
- ⊭ - GREASE TRAP
- ⊮ - HEADWALL
- ⊯ - IRRIGATION CONTROL VALVE
- ⊰ - JUNCTION BOX
- ⊱ - LIGHT POLE
- ⊲ - MAILBOX
- ⊳ - MONUMENT
- ⊴ - OVERFLOW CONTROL STRUCTURE
- ⊵ - POWER BOX
- ⊶ - POWER METER
- ⊷ - POWER POLE
- ⊸ - SANITARY MANHOLE
- ⊹ - SIGN
- ⊺ - SINGLE-WING CATCH BASIN
- ⊻ - SINGLE-WING CATCH BASIN
- ⊼ - TELEPHONE BOX
- ⊽ - TRANSFORMER
- ⊾ - TRAFFIC SIGNAL POLE
- ⊿ - WATER MANHOLE
- ⊿ - WATER METER
- ⊿ - WATER VALVE
- ⊿ - WATER VAULT
- ⊿ - WEIR INLET

**SURVEY NOTES**

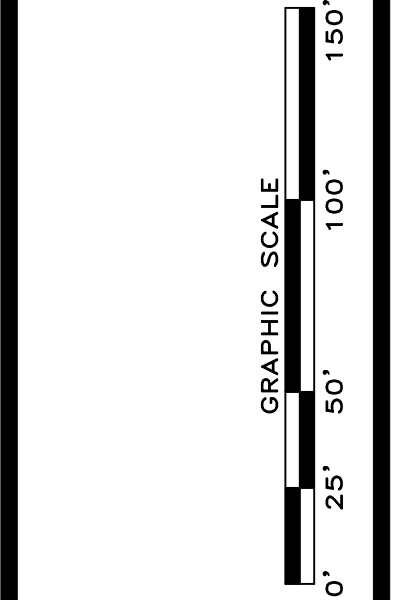
1. THE FIELD DATA DATED 11/03/2021 - 11/09/2021 WAS ADJUSTED USING THE COMPASS RULE. A TRIMBLE S-SERIES ROBOTIC TOTAL STATION WAS USED FOR ANGULAR AND LINEAR MEASUREMENTS.
2. THE HORIZONTAL DATUM FOR THIS SURVEY IS THE NORTH AMERICAN DATUM OF 1983 (NAD 83 GEORGIA WEST ZONE) AND THE VERTICAL DATUM USED IS THE NORTH AMERICAN VERTICAL DATUM OF 1988 (NAVD88) AS DETERMINED BY UTILIZING GPS. THE EQUIPMENT USED TO OBTAIN THIS DATA WAS A DUAL FREQUENCY TRIMBLE R6 GNSS GPS RECEIVER WITH A TRIMBLE TSC3 DATA COLLECTOR RECEIVING RTK CORRECTIONS VIA A WIRELESS NETWORK FROM BASE STATIONS OPERATED BY TRIMBLE NAVIGATION. THE AVERAGE RELATIVE POSITIONAL ACCURACY OBTAINED ON THE POSITIONS UTILIZED IN THIS SURVEY WAS 0.04 FT. HORIZONTAL AND 0.07 FT. VERTICAL. THESE VALUES WERE DERIVED FROM GPS PROCESSING SOFTWARE. THE REMAINDER OF THE FIELD WORK WAS PERFORMED WITH CONVENTIONAL EQUIPMENT AS DESCRIBED ABOVE.
3. THIS SURVEY WAS PREPARED WITHOUT THE BENEFIT OF A CURRENT TITLE COMMITMENT; THEREFORE EXCEPTION IS MADE HEREIN TO ANY EASEMENTS, RESERVATIONS, RIGHTS OF WAY AND RESTRICTIONS OF RECORD, WHICH MAY EXIST. FURTHERMORE, THIS PROPERTY MAY BE SUBJECT TO EASEMENTS, RESERVATIONS, RIGHTS OF WAY, OR RESTRICTIONS, WHICH ARE NOT RECORDED OR NOT DISCLOSED BY THE TITLE COMMITMENT OR OTHERWISE UNKNOWN TO THE SURVEYOR; THEREFORE EXCEPTION IS TAKEN TO ANY SUCH ITEMS.
4. THE UTILITIES SHOWN HEREON HAVE BEEN FIELD LOCATED BY ROCHESTER & ASSOC., INC. PERSONNEL. THE SURVEYOR MAKES NO GUARANTEE THAT THE UTILITIES SHOWN COMPRISE ALL SUCH UTILITIES IN THE AREA, EITHER IN SERVICE OR ABANDONED. THE SURVEYOR FURTHER DOES NOT WARRANT THAT THE UNDERGROUND UTILITIES SHOWN ARE IN THE EXACT LOCATION INDICATED ALTHOUGH HE DOES CERTIFY THAT THEY ARE LOCATED AS ACCURATELY AS POSSIBLE FROM THE INFORMATION AVAILABLE. THE SURVEYOR HAS NOT PHYSICALLY LOCATED THE UNDERGROUND UTILITIES.
5. THIS PROPERTY MAY OR MAY NOT CONTAIN WETLAND AREAS. NO EFFORTS HAVE BEEN MADE BY THIS SURVEYOR TO IDENTIFY OR LOCATE ANY WETLAND AREAS ON THIS PROPERTY. A QUALIFIED WETLAND SPECIALIST OR BIOLOGIST, PRIOR TO ANY LAND DISTURBANCE, SHOULD PERFORM WETLAND IDENTIFICATION AND DELINEATION.
6. THIS PROPERTY IS LOCATED IN A FLOOD HAZARD ZONE "X" AS PER F.E.M.A. INSURANCE DATE MAP OF COWETA COUNTY, GEORGIA. MAP NO. 13077C0356D, EFFECTIVE DATE FEBRUARY 6, 2013.
7. ALL PROPERTY CORNERS REFERENCED AS "IPS" INDICATES A 1/2" REBAR PLACED WITH A YELLOW PLASTIC CAP STAMPED "ROCHESTER-LSF000484", UNLESS OTHERWISE NOTED.
8. THIS SURVEY IS FOR THE EXCLUSIVE USE OF THE ENTITIES SHOWN HEREON; ANY USE BY THIRD PARTIES IS AT THEIR OWN RISK.
9. ALL DISTANCES AS SHOWN ARE HORIZONTAL GROUND DISTANCES IN U.S. SURVEY FEET (39.37 INCHES = 1 METER)
10. CONTOUR INTERVAL IS 2 FEET.



**Rochester & Associates, Inc.**  
 286 GA Hwy 314, Suite A • Fayetteville, Georgia 30214  
 (770)716.8123 (770)716.8124 Fax • www.rochester-assoc.com

TOPOGRAPHIC SURVEY FOR  
**LOWERY ROAD TRACTS**  
 CITY OF GRANVILLE  
 CORNER 604017, GEORGIA

NO.	DATE	DESCRIPTION	REVISIONS



SHEET  
**1**  
 OF  
**2**

DATE: 11/22/2022  
 SCALE: 1" = 50'  
 JOB NO.: F221012.SN  
 DRAWN BY: BCR  
 DWG NO.: SRW



