

DUNWOODY PARK



DUNWOODY  **DUNWOODY**

**OFFICE
SPACE**

UP TO
16,393 SF
AVAILABLE



 **SK** COMMERCIAL
REALTY

P.X. HEAD
VICE PRESIDENT
404.272.3408
PKHEAD@SKCR.COM

DUNWOODY PARK

PROPERTY TYPE
OFFICE/MEDICAL PARK

NUMBER OF BUILDINGS
8

TOTAL PARK SIZE
±230,000 SF

YEAR BUILT
1974

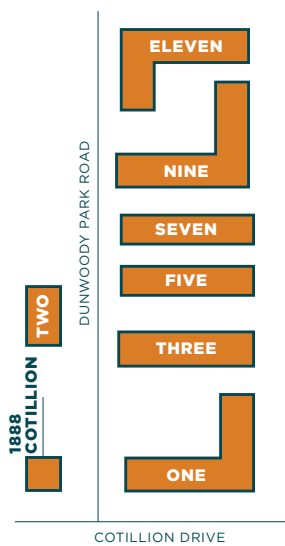
BUILDING ONE RENOVATED
2018

SUBMARKET
CENTRAL PERIMETER

LEASE RATE
FULL SERVICE GROSS

ZONING
O/I (OFFICE-INSTITUTION)

DUNWOODY DUNWOODY



AMENITIES

UP TO 6:1,000 PARKING RATIO

WIRED AT&T, COMCAST, CENTURY LINK FIBER

NEAR DUNWOODY, CHAMBLEE AND MEDICAL CENTER MARTA RAIL STATIONS

LOCATED 2 MILES WEST OF I-85 AND 3 MILES EAST OF GA 400

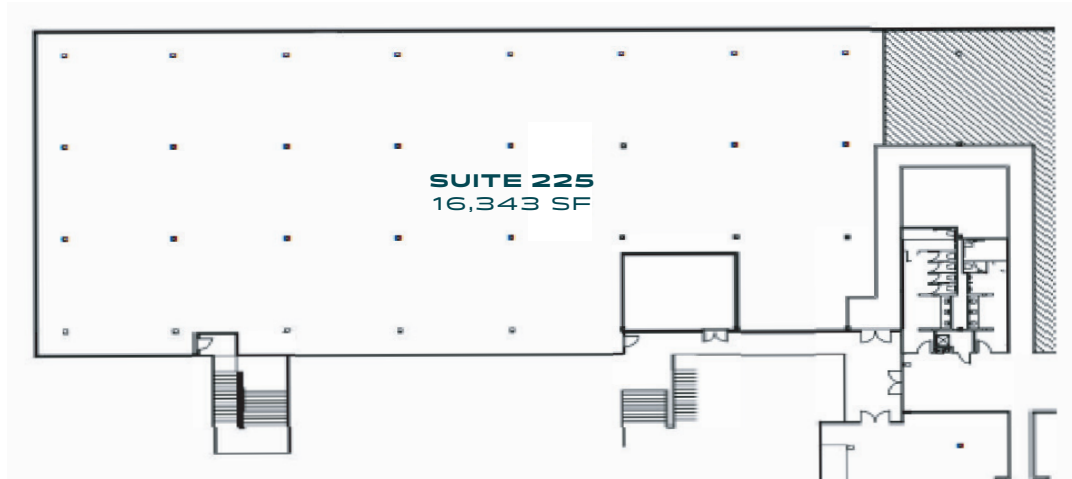
NEARBY RESTAURANTS AND SHOPPING

EASY ACCESS TO I-285 + GA 400

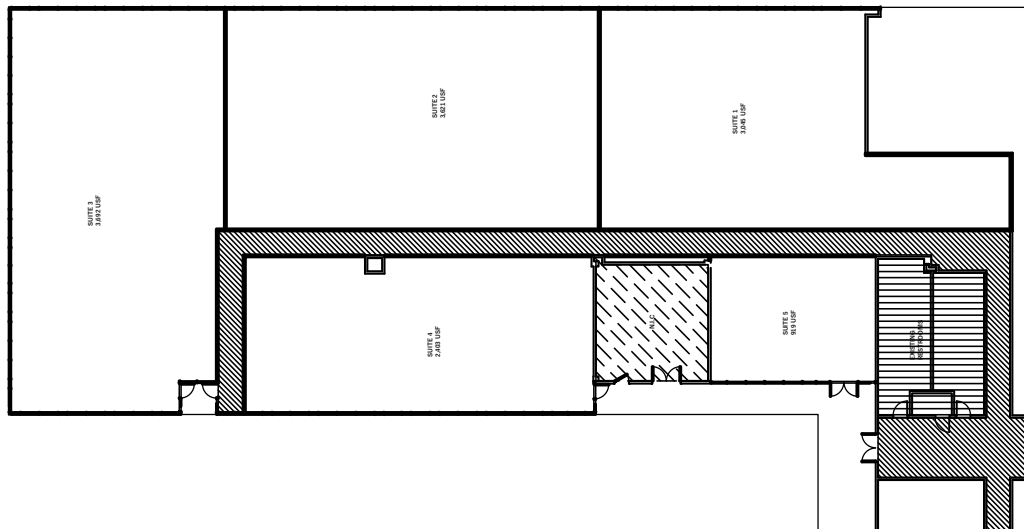
ONE

DUNWOODY PARK

OPTION 1 - SINGLE SUITE



OPTION 2 - MULTIPLE SUITES



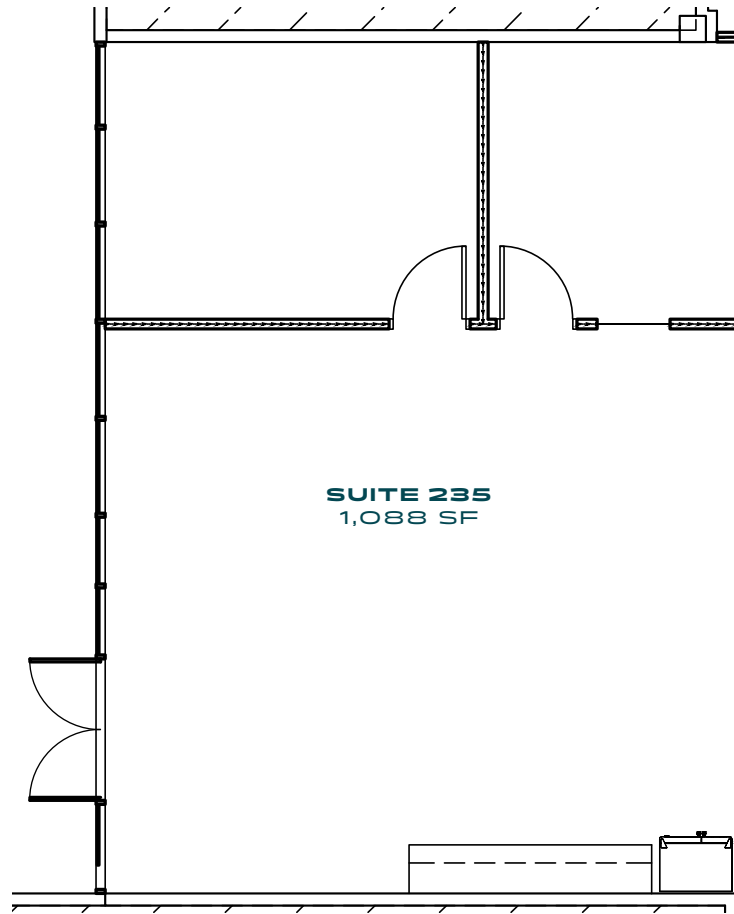
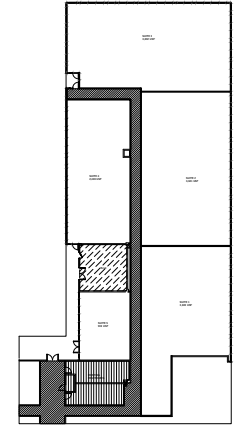
KEY



DUNWOODY  DUNWOODY 

ONE

DUNWOODY PARK



KEY



DUNWOODY

DUNWOODY

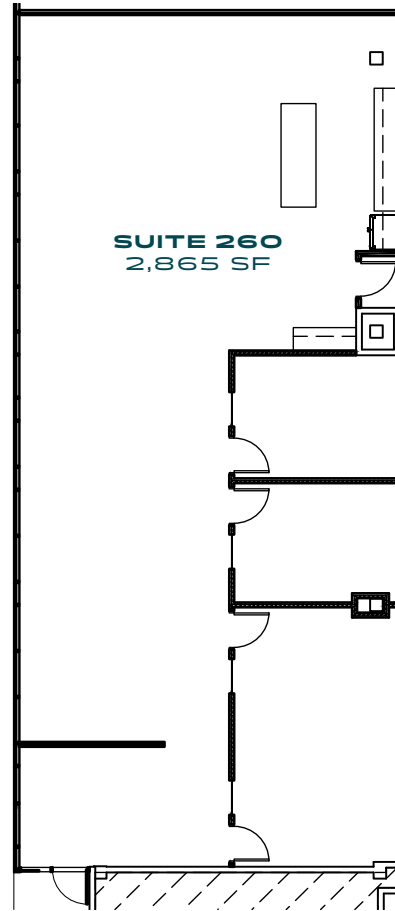
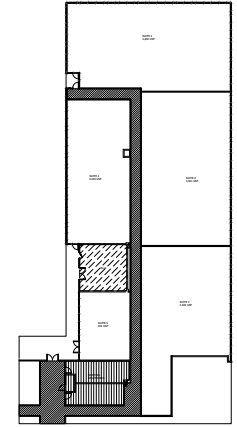
DUNW

P.X. HEAD
VICE PRESIDENT
404.272.3408
PKHEAD@SKCR.COM



ONE

DUNWOODY PARK



KEY



DUNWOODY

DUNWOODY

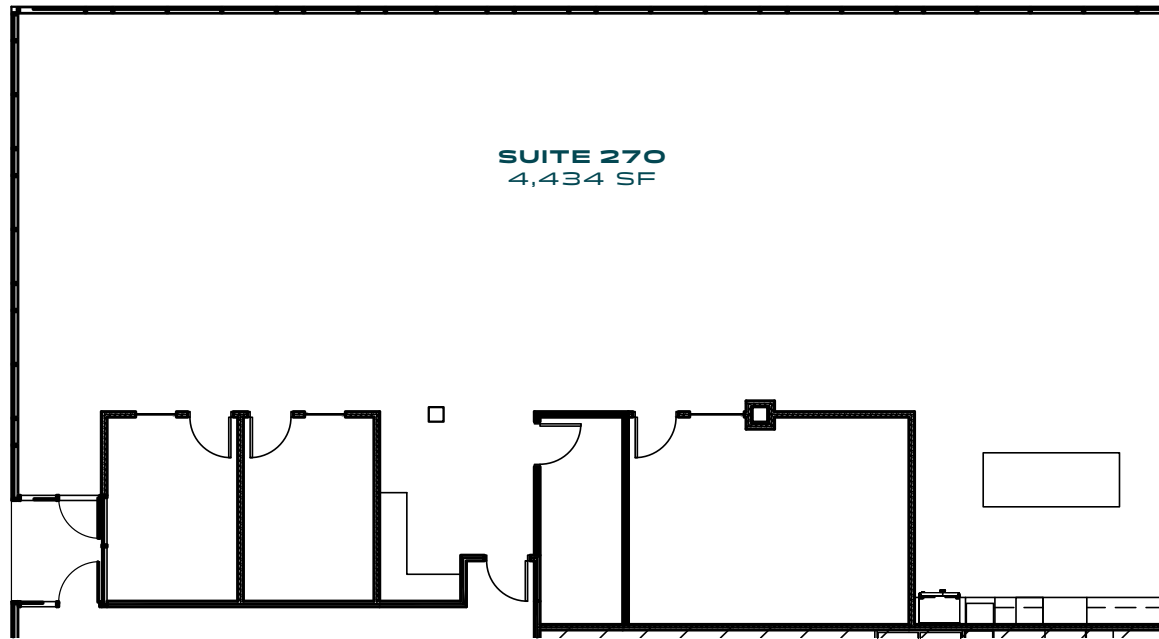
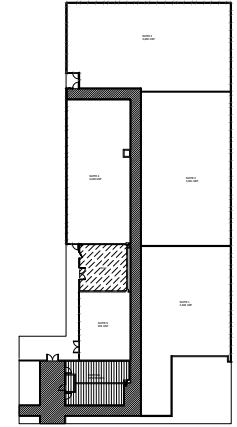
DUNW

P.X. HEAD
VICE PRESIDENT
404.272.3408
PKHEAD@SKCR.COM



ONE

DUNWOODY PARK



KEY



DUNWOODY

DUNWOODY

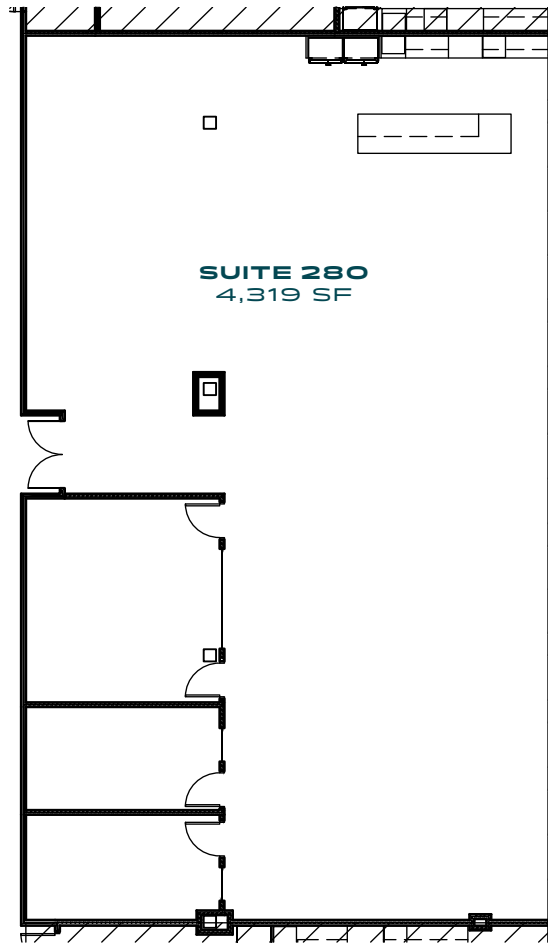
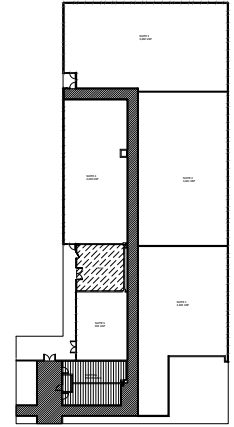
DUNW

P.X. HEAD
VICE PRESIDENT
404.272.3408
PKHEAD@SKCR.COM



ONE

DUNWOODY PARK



KEY



DUNWOODY

DUNWOODY

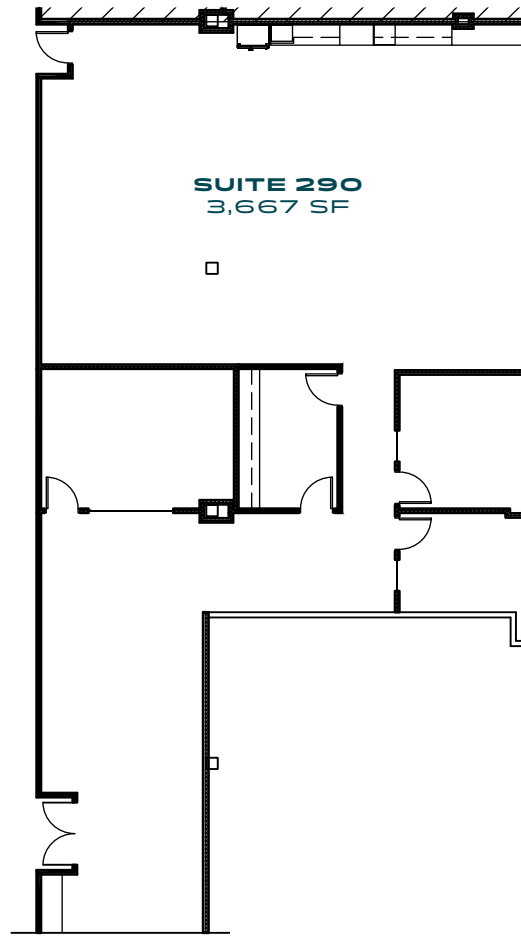
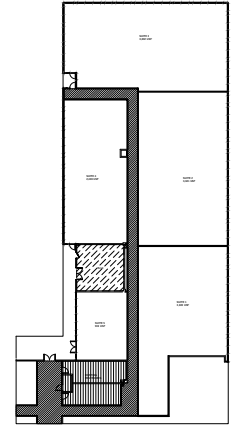
DUNW

P.X. HEAD
VICE PRESIDENT
404.272.3408
PKHEAD@SKCR.COM



ONE

DUNWOODY PARK



KEY



DUNWOODY

DUNWOODY

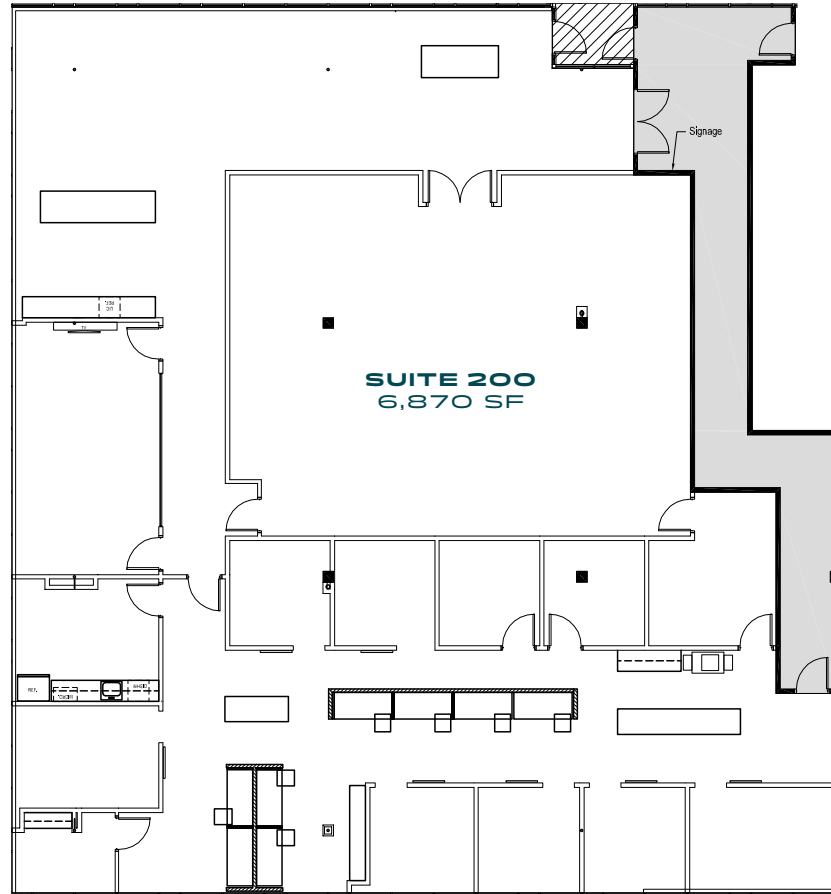
DUNW

P.X. HEAD
VICE PRESIDENT
404.272.3408
PKHEAD@SKCR.COM



ONE

DUNWOODY PARK



KEY



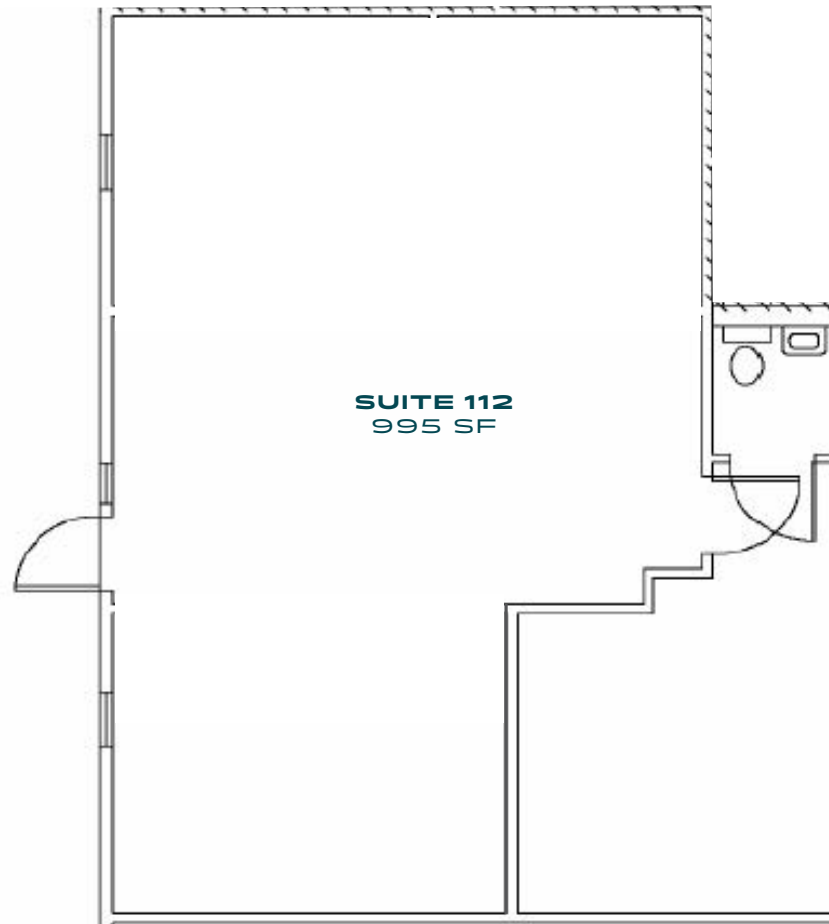
DUNWOODY DUNWOODY DUNW

P.X. HEAD
VICE PRESIDENT
404.272.3408
PKHEAD@SKCR.COM



THREE

DUNWOODY PARK



KEY



DUNWOODY

DUNWOODY

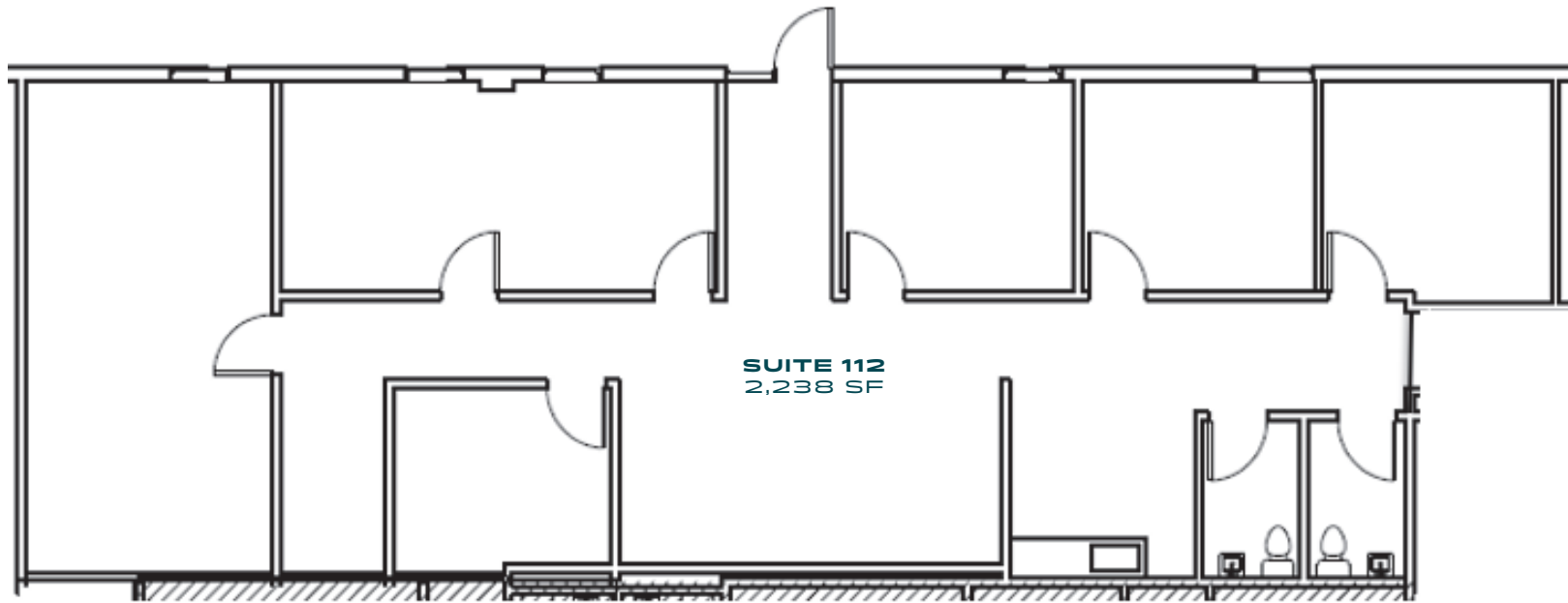
DUNW

P.X. HEAD
VICE PRESIDENT
404.272.3408
PKHEAD@SKCR.COM

 SK COMMERCIAL
REALTY

FIVE

DUNWOODY
PARK



SUITE 112
2,238 SF

KEY



DUNWOODY

DUNWOODY

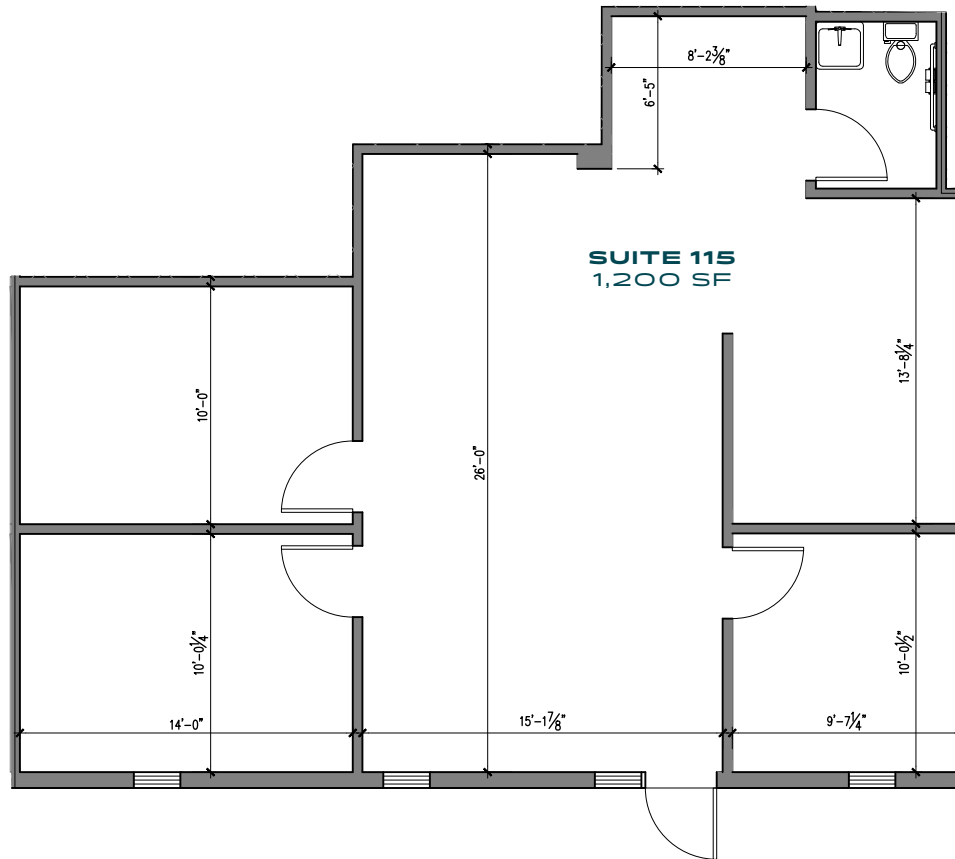
DUNW

P.X. HEAD
VICE PRESIDENT
404.272.3408
PKHEAD@SKCR.COM



SEVEN

DUNWOODY PARK



KEY



DUNWOODY

DUNWOODY

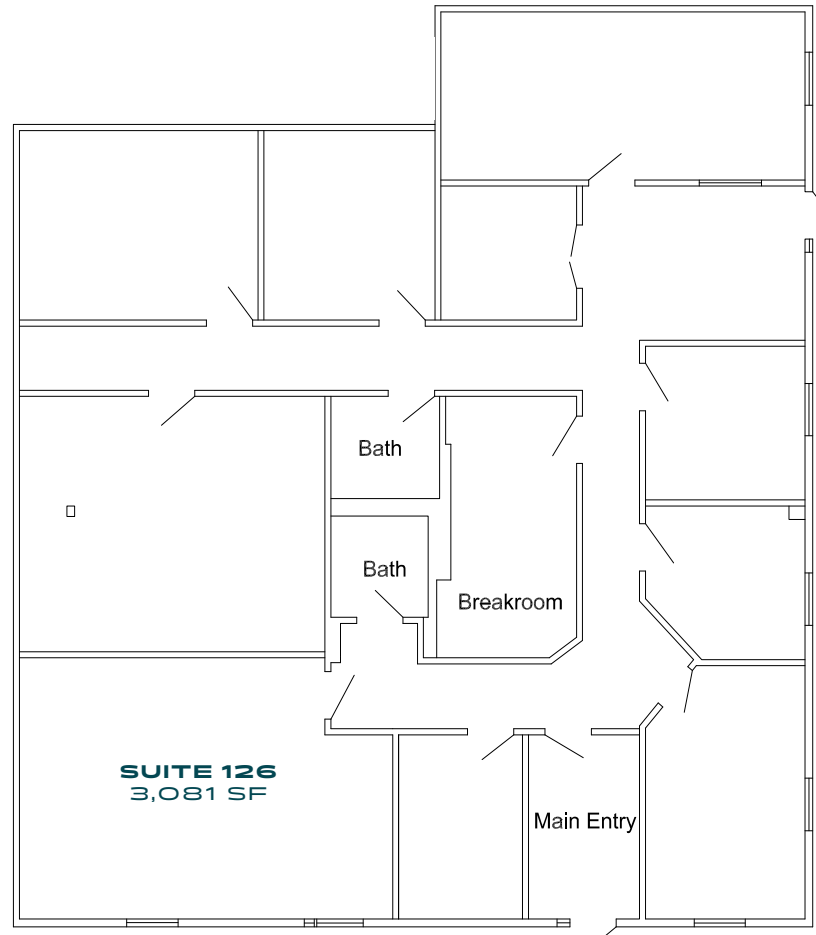
DUNW

P.X. HEAD
VICE PRESIDENT
404.272.3408
PKHEAD@SKCR.COM



NINE

DUNWOODY PARK



KEY



DUNWOODY

DUNWOODY

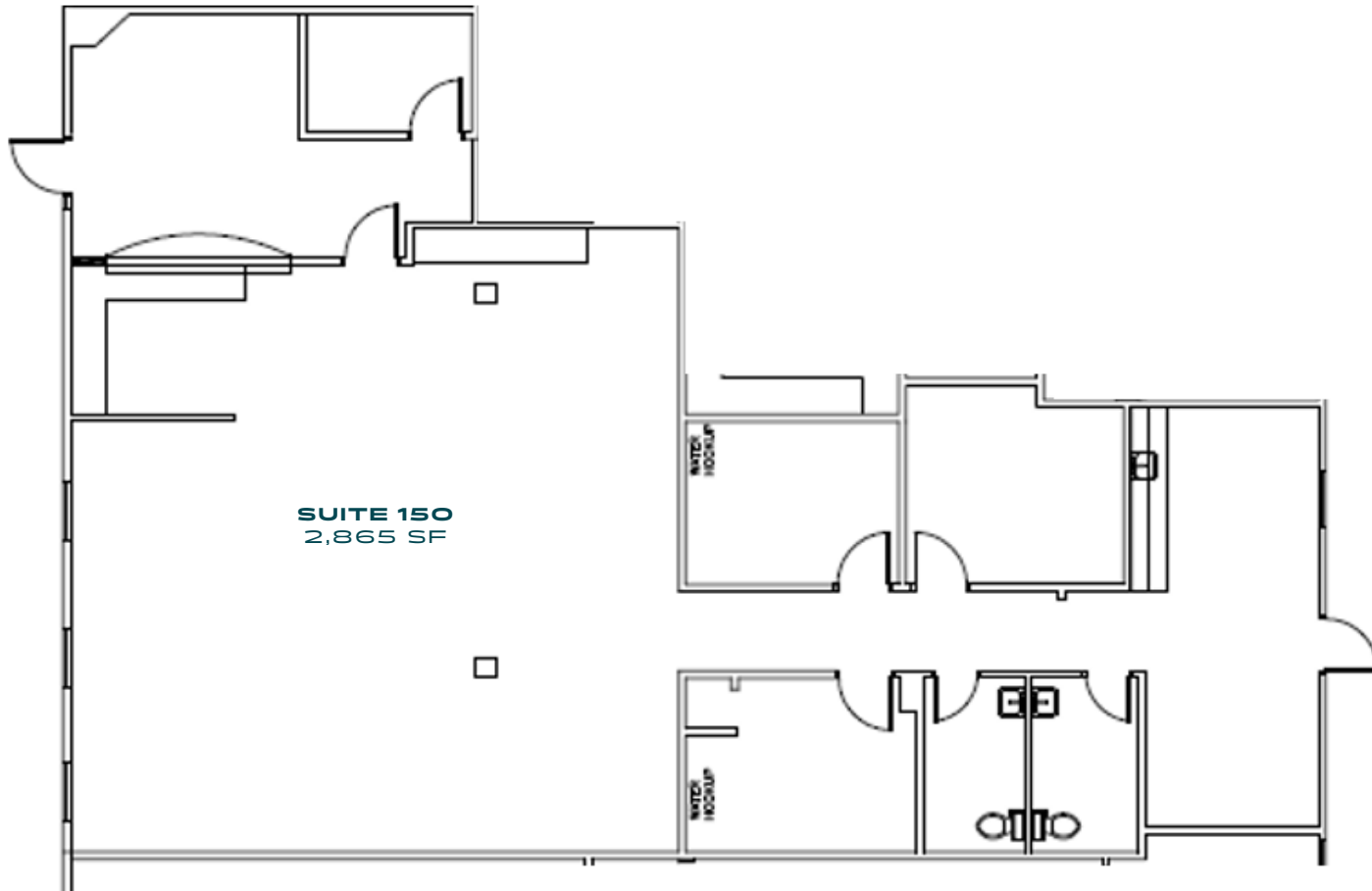
DUNW

P.X. HEAD
VICE PRESIDENT
404.272.3408
PKHEAD@SKCR.COM

 SK COMMERCIAL
REALTY

ELEVEN

DUNWOODY PARK



KEY



DUNWOODY

DUNWOODY

DUNW

P.X. HEAD
VICE PRESIDENT
404.272.3408
PKHEAD@SKCR.COM

 **SK** COMMERCIAL
REALTY