



For Sale or Lease

# Downtown Hillsboro Commercial Property on MAX

759 SE Washington Street | Hillsboro, Oregon





# The Property

## Highlights:

- 15,898 SF fully built-out classroom/educational facility
- 1.1 acre site
- Fenced/secured outside area
- Directly on the Max Line
- On-site Parking
- Sprinklered
- Directly adjacent to OHSU Hillsboro Medical Center & Pacific University
- Kitty-corner from Block 67's new 6-story, 224 unit workforce housing project with grocery & other retail. More information [here](#)
- Zoned SCC-DT (Station Community Commercial Downtown District - visit [here](#) for zoning code & permitted uses

Call brokers for pricing







## City of Hillsboro

Hillsboro is one of Oregon's most diverse and dynamic cities, with a steadily growing population of just over 111,000. During the workday, more than 50,000 employees commute to Hillsboro by car, bicycle, bus, or MAX Light Rail train to work at companies such as Intel, Nike, and Genentech.

Hillsboro is the largest city in Washington County, ideally located in the Pacific Northwest — 10 miles west of Portland — Hillsboro is an hour's drive from the beautiful Cascade Mountains and Columbia River Gorge to the east, and the sandy beaches of the Pacific Ocean to the west.

Known as the "high-tech hub of Oregon" or the "tallest tree in the Silicon Forest," Hillsboro has some of the best land, power, and water resources in the country.

Learn more about Hillsboro [here](#)!

## Former Educational Center

759 SE Washington Street is a 15,898 SF facility purpose built as an educational center. The property boasts 12 classrooms, several conference rooms, storage rooms, a former library and fabrication room, a large open area, staff lounge, small collaboration areas, two workrooms, offices, drinking fountains, water bottle dispensers and ADA accessible restrooms.

Outside, on-site parking in two areas, mature trees, open, secured fenced yard area with recycled tire under the play area, and on an active MAX line, providing easy, affordable access for students, employees or clients directly to your doorstep.

Neighbors include Pacific University, OHSU's Hillsboro Medical Center & Emergency, Lincoln Street Elementary School, and walking distance to the adorable historic Hillsboro downtown core with coffee, boutique shopping and restaurants.

### Karen Lisignoli, SIOR

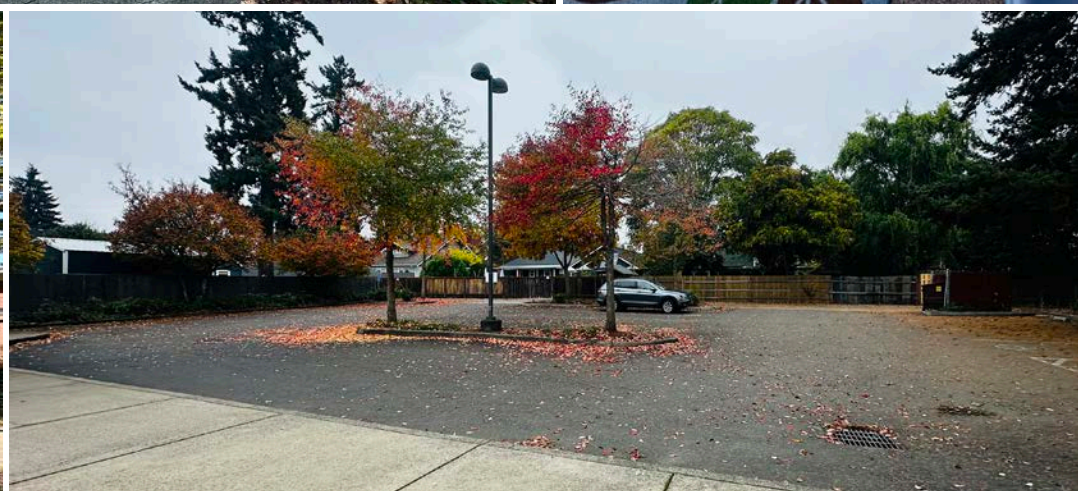
Associate Vice President  
+1 503 740 1679  
[karen.lisignoli@colliers.com](mailto:karen.lisignoli@colliers.com)

### Mike Thomas

Senior Vice President  
+1 503 807 0454  
[mike.thomas@colliers.com](mailto:mike.thomas@colliers.com)



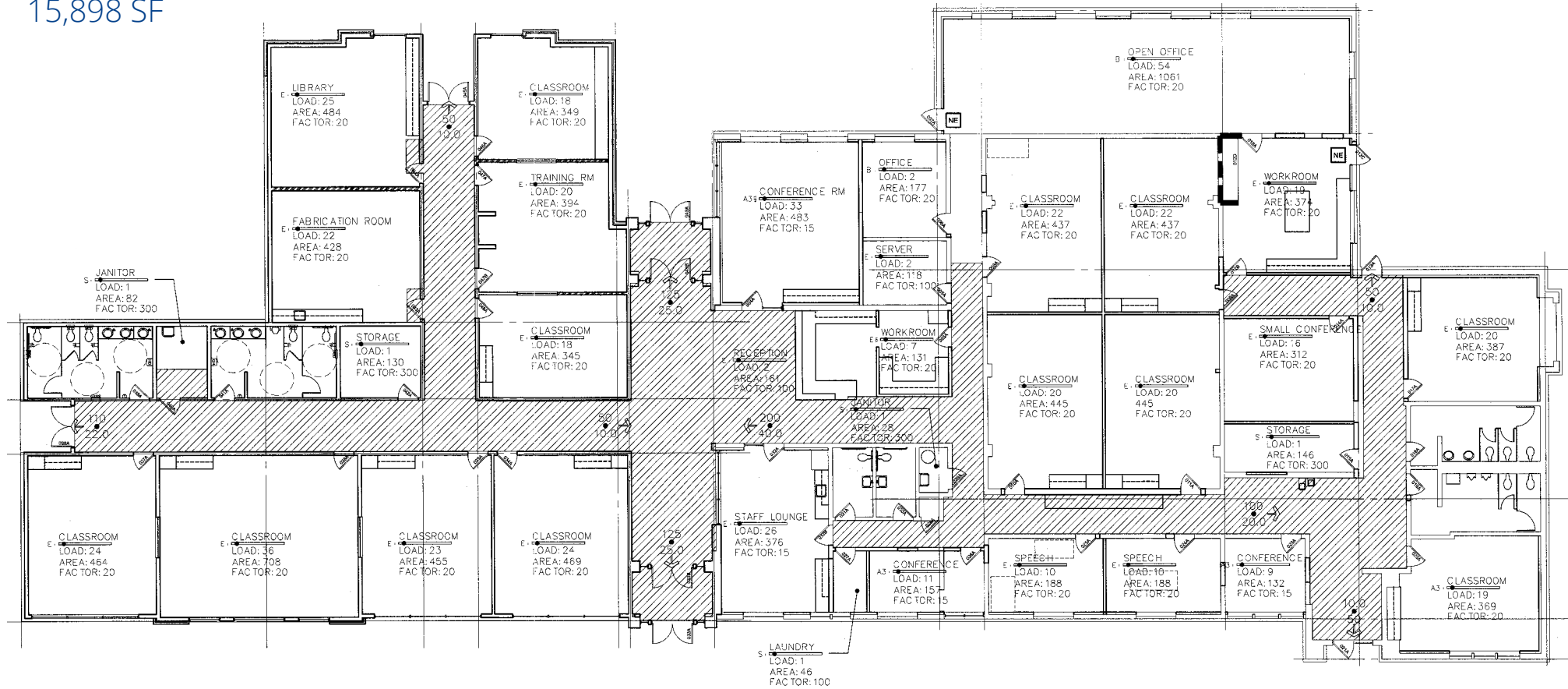






# Building Plan

15,898 SF









# Contact:

## **Karen Lisignoli, SIOR**

Associate Vice President  
+1 503 740 1679  
karen.lisignoli@colliers.com

## **Mike Thomas**

Senior Vice President  
+1 503 807 0454  
mike.thomas@colliers.com



851 SW 6th Avenue, Suite 1600  
Portland, OR 97204

