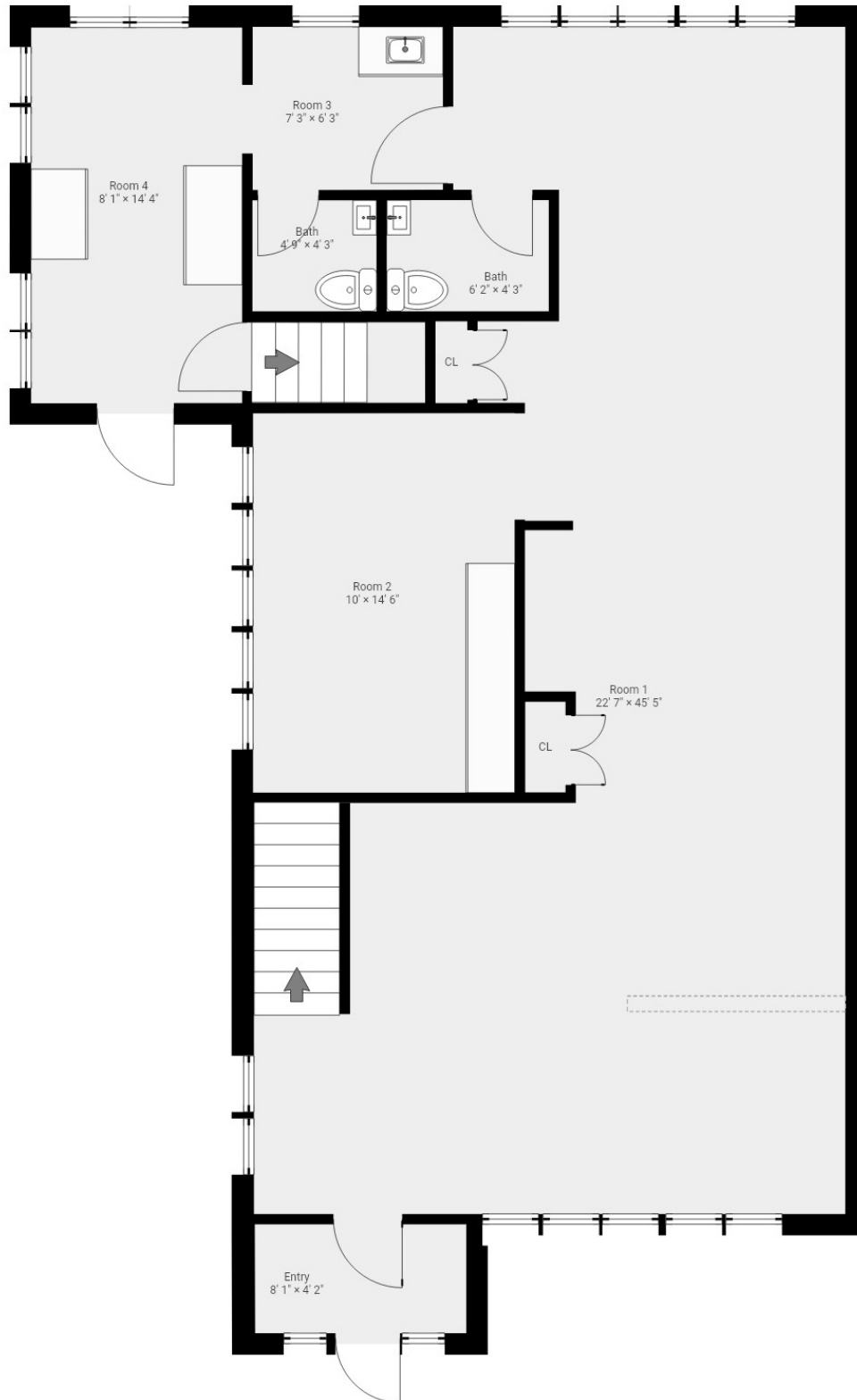

231 Bedford St, Lexington MA

First Floor



This Floor Plan is an artistic rendering intended solely for visual purposes. It is designed exclusively for marketing purposes. All measurements and annotations provided are approximate and are not drawn to an exact scale. This drawing may contain errors and/or omissions. Usage rights for this floor plan are solely granted to the individuals or entities mentioned in the document. Copyright © 2023 Yellow House Media Group



231 Bedford St, Lexington MA

Second Floor

The second floor plan features a central hallway (CL) with a staircase leading down. To the left is a bathroom (Bath) and a mechanical room (Mech.). To the right are three rooms: Room 1, Room 2, and Room 3. A staircase also leads down from the right side of the hallway. The plan includes dimensions for each room and a north arrow.

Room 1
10' 7" × 11' 5"

Room 2
11' 4" × 8'

Room 3
22' 4" × 16' 9"

Bath
5' 4" × 5' 1"

Mech.
16' 10" × 14' 11"

CL
5' 3" × 10' 10"

5' 8" × 9' 6"

6' 6" × 6' 1"

This floor plan shows a three-room apartment. At the top left is Room 3, measuring 5' 4" x 4' 6". To its right is Room 2, measuring 8' 11" x 11' 1", which contains two windows. Below Room 3 is a large open area measuring 14' 8" x 11' 3", which includes a staircase with an arrow pointing right. At the bottom is Room 1, measuring 14' 7" x 12'. A central hallway provides access to all rooms.

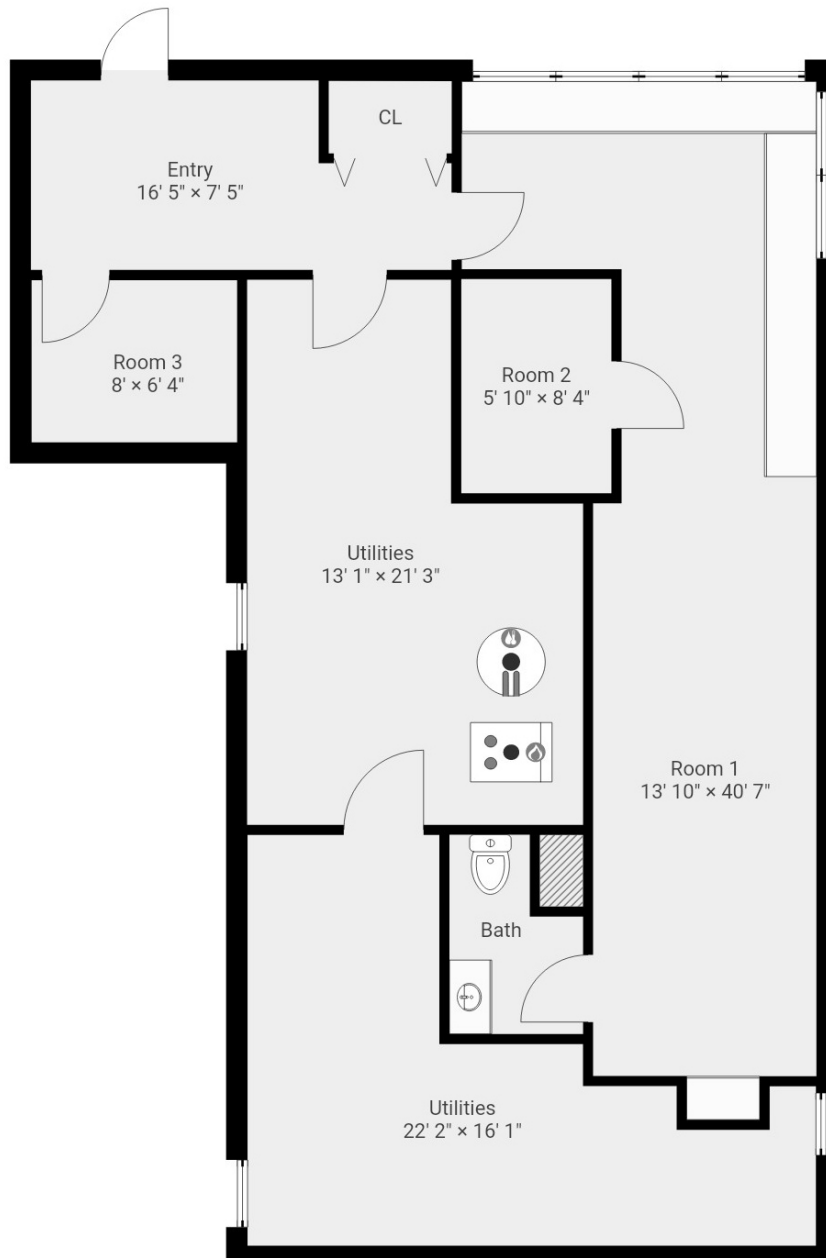


YELLOW HOUSE
MEDIA GROUP



231 Bedford St, Lexington MA

Lower Level



This Floor Plan is an artistic rendering intended solely for visual purposes. It is designed exclusively for marketing purposes. All measurements and annotations provided are approximate and are not drawn to an exact scale. This drawing may contain errors and/or omissions. Usage rights for this floor plan are solely granted to the individuals or entities mentioned in the document. Copyright © 2023 Yellow House Media Group

