

architect :: tory stephen
california registration: c28854
hawaii registration: ar17392
north carolina registration: 10226
michigan registration: 1301066386
18525 bert road, apt b
riverside, ca 92508
tory@thestephengroupinc.com
828.713.5707

Copyright © 2020 tory stephen,
architect. These drawings are the
property of tory stephen and shall
not be used for any other project
unless with express written consent
of tory stephen, architect.

Project Location:
Lot: 0473-081-05
18856 Highway 18
Apple Valley CA

ADC, Inc.
3900 Sherman Drive
Riverside CA 92503
888-774-5831

Construction Documents:
Date: 1-1-2020
18MAR21 REV

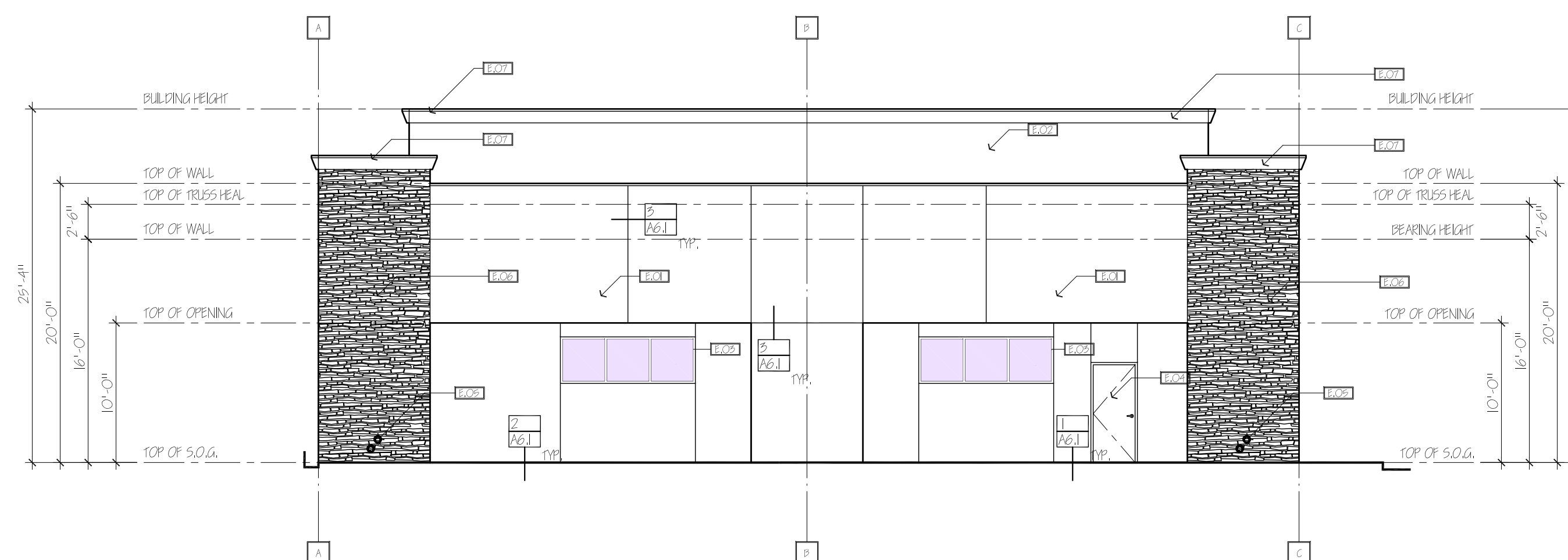


ELEVATIONS

a3.2

ELEVATION NOTES:

- E.01 REGIONAL SAND FINISH STUCCO. SEE SHEET A2.1 FOR INSTALLATION SPECIFICATION. STUCCO SUBCONTRACTOR SHALL SUBMIT MANUFACTURER'S PRODUCT SPECIFICATIONS PRIOR TO ORDERING ANY MATERIALS, TYP.
- E.02 STUCCO FINISHED EQUIPMENT SCREEN TO MATCH BUILDING STUCCO FINISH, TYP.
- E.03 KAWNEER ALUMINUM WINDOW FRAME SYSTEM DARK BRONZE #40 (OR EQ.) & PPG SOLARBAN TONIC (2) SOLARBAN + CLEAR 1" COMPOSITE THICKNESS (OR EQ.), INSTALLED PER MANUFACTURER'S REQUIREMENTS. SUBCONTRACTOR SHALL SUBMIT MANUFACTURER'S PRODUCT SPECIFICATIONS AND COLOR SELECTION PRIOR TO ORDERING ANY MATERIALS, TYP.
- E.04 PAINTED HOLLOW METAL DOOR AND FRAME, TYP.
- E.05 ROOF DRAIN & OVERFLOW DOWN SPOUT NOZZLE W/ DRIP DIVERTER, POLISHED BRONZE - ZURN Z99 OR EQUAL, TYP.
- E.06 CULTURED STONE VENEER - MANUFACTURED BY "CULTURED STONE" PRO-FIT ALPINE LEDGE STONE - UMBER CREEK. INSTALL PER MANUFACTURER'S REQUIREMENTS, TYP.
- E.07 6"x12" FOAM BASE CORNICE MOLDING BY ADVANCED FOAM, INC., 1745 W. 154TH ST., GARDENA, CA 90249, advancedfoam.com. INSTALLED PER MANUFACTURER'S REQUIREMENTS, TYP.

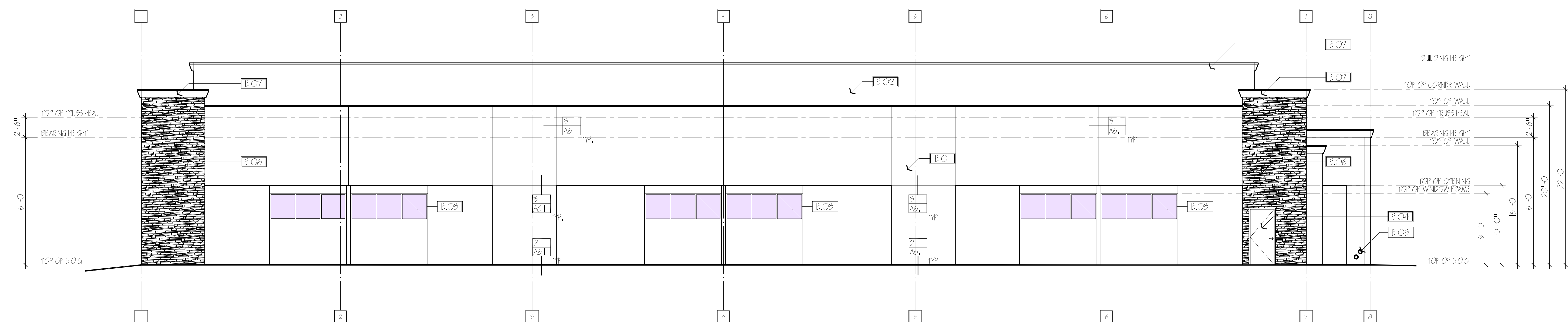


STREET ELEVATION - SOUTH

SCALE: 3/16" = 1'-0"

ELEVATION NOTES:

- E.01 REGIONAL SAND FINISH STUCCO. SEE SHEET A2.1 FOR INSTALLATION SPECIFICATION. STUCCO SUBCONTRACTOR SHALL SUBMIT MANUFACTURER'S PRODUCT SPECIFICATIONS PRIOR TO ORDERING ANY MATERIALS, TYP.
- E.02 STUCCO FINISHED EQUIPMENT SCREEN TO MATCH BUILDING STUCCO FINISH, TYP.
- E.03 KAWNEER ALUMINUM WINDOW FRAME SYSTEM DARK BRONZE #40 (OR EQ.) & PPG SOLARBAN TONIC (2) SOLARBAN + CLEAR 1" COMPOSITE THICKNESS (OR EQ.), INSTALLED PER MANUFACTURER'S REQUIREMENTS. SUBCONTRACTOR SHALL SUBMIT MANUFACTURER'S PRODUCT SPECIFICATIONS AND COLOR SELECTION PRIOR TO ORDERING ANY MATERIALS, TYP.
- E.04 PAINTED HOLLOW METAL DOOR AND FRAME, TYP.
- E.05 ROOF DRAIN & OVERFLOW DOWN SPOUT NOZZLE W/ DRIP DIVERTER, POLISHED BRONZE - ZURN Z99 OR EQUAL, TYP.
- E.06 CULTURED STONE VENEER - MANUFACTURED BY "CULTURED STONE" PRO-FIT ALPINE LEDGE STONE - UMBER CREEK. INSTALL PER MANUFACTURER'S REQUIREMENTS, TYP.
- E.07 6"x12" FOAM BASE CORNICE MOLDING BY ADVANCED FOAM, INC., 1745 W. 154TH ST., GARDENA, CA 90249, advancedfoam.com. INSTALLED PER MANUFACTURER'S REQUIREMENTS, TYP.



LEFT SIDE ELEVATION - EAST

SCALE: 3/16" = 1'-0"