

PROPERTY INFORMATION

- ✓ 3,291 Square Feet
- ✓ Fully Built Out Medical Clinic
- ✓ High Visibility in a Highly Trafficked Retail Center
- ✓ Building Signage Available
- ✓ Class A Finishes
- ✓ Private Employee Entrance
- ✓ Move In Ready
- ✓ Parking Ratio of 5 Stalls/1,000 SF
- ✓ Possible to Subdivide

TRAFFIC COUNTS

5600 W: 12,000 Average Daily Traffic
7800 S: 17,000 Average Daily Traffic

Tenant Improvements Negotiable!!

Available Immediately!

LEASE RATE: \$27.75/SF NNN

CONTACT US

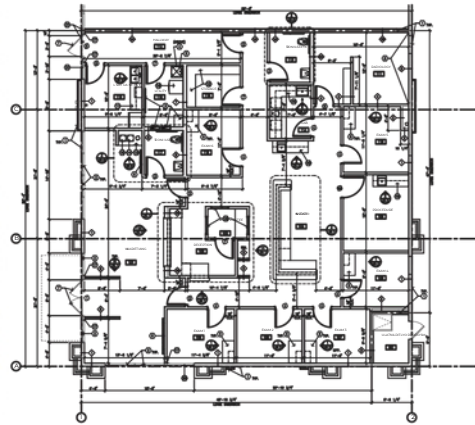
KELLEN KONCAR

✉ kellen@crestah.com 📞 801-824-1311 🌐 www.crestah.com 📍 2040 E. Murray Holladay Road Suite 106 Holladay, UT

Tel: 801.876.6070 📞

WEST JORDAN MEDICAL OFFICE/RETAIL

7724 SOUTH 5600 WEST, SUITE 102 WEST JORDAN, UT 84081



This information is given with the understanding that all negotiations and/or real estate activity related to the property described above shall be conducted through this CRE Specialists office. The above information while not guaranteed, was obtained from sources we believe to be reliable.

CONTACT US

KELLEN KONCAR

✉ kellen@cresutah.com 📞 801-824-1311 🌐 www.cresutah.com 📍 2040 E. Murray Holladay Road Suite 106 Holladay, UT

Tel: 801.876.6070 📶